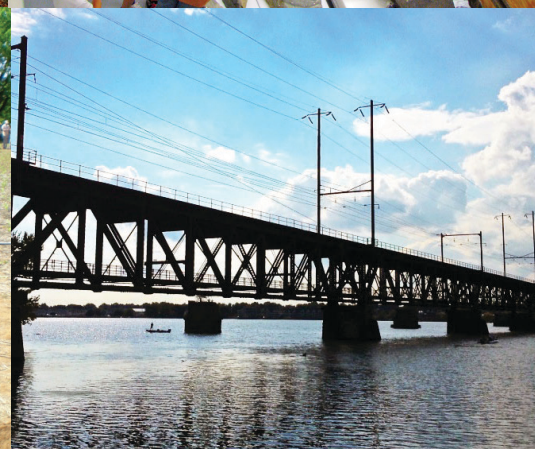


Report to the Governor and the General Assembly

2014 ANNUAL REPORT OF THE MARYLAND HISTORICAL TRUST

Maryland Department of Planning



The Maryland Historical Trust Board of Trustees

The Maryland Historical Trust is governed by a 15-member Board of Trustees, including the Governor, the Senate President, and the House Speaker or their designees, and 12 members appointed by the Governor. At least two trustees must be qualified with an advanced degree in archeology or a closely related field, and shall have experience in the field of archeology. Of the trustees qualified in the field of archeology, at least one must have experience in the field of submerged archeology and at least one must have experience in the field of terrestrial archeology. The term of a member is four years.

Trustees Appointed by the Governor:

James O. Lighthizer	Anne Arundel County
Dr. Alvin H. Luckenbach, PhD - Terrestrial Archeology Vice Chairman	Anne Arundel County
Larry S. Gibson	Baltimore City
The Honorable Margo G. Bailey	Kent County
Dr. James P. Delgado – Underwater Archeology	Montgomery County
Charles L. Edson, Chairman	Montgomery County
Charles A. Stek	Montgomery County
Samuel J. Parker, Jr.	Prince George’s County
David A. Turner	Prince George’s County
Brien Poffenberger	Washington County

Ex Officio Members of the Board

Amanda S. Conn	Representative of the Governor
The Honorable Thomas “Mac” Middleton	Representative of the Senate President
The Honorable Maggie McIntosh	Representative of the Speaker of the House

The board also includes non-voting representatives appointed by the board to participate from non-represented areas of the state.

Area Representatives

Harry T. Spikes, II	Baltimore City
Martin P. Azola	Baltimore County
Dr. Ralph E. Eshelman	Calvert County, Charles, St. Mary's Counties
Joshua D. Brown	Cecil County
Dean R. Camlin	Carroll County
The Honorable Barrie P. Tilghman	Dorchester and Wicomico Counties
G. Bernard Callan	Frederick
W. Dickerson Charlton	Prince George's
Douglass C. Reed	Washington

Executive Summary

Part of the Maryland Department of Planning (MDP), the Maryland Historical Trust (MHT) is the state agency dedicated to preserving and interpreting the legacy of Maryland's past. Through research, conservation and education, MHT assists the people of Maryland in understanding their historical and cultural heritage. MHT serves as Maryland's State Historic Preservation Office pursuant to the National Historic Preservation Act of 1966. Programs include:

- financial incentives for preservation, such as tax credits, grants and loans
- state and federal project review and compliance
- statewide preservation planning
- terrestrial and underwater archeology
- research, survey and designation
- heritage tourism; and museum and local government assistance

In addition to its administrative office in Crownsville, MHT includes the Jefferson Patterson Park & Museum in St. Leonard, Maryland, which houses the Maryland Archaeological Conservation Laboratory.

In accordance with the requirements of State Finance Article §5A-318(c)(16), State Finance Article §5A-327(m), State Finance Article §5A-328(l), and State Finance Article §5A-353(c), MDP is pleased to present this annual report of MHT activities. We highlight some of the year's highlights below.

Special Accomplishments

National Parks Service Funding Awarded for Documentation of African American Civil Rights

MHT was one of only 13 states awarded a grant from the National Park Service's new Underrepresented Community Historic Preservation Fund Grant Program. The project will research African American civil rights-related resources in Baltimore City to provide a basis for evaluating their historic significance and help guide appropriate treatment and interpretation. The project, headed jointly by MHT, the Baltimore National Heritage Area and Baltimore Heritage, Inc., a local nonprofit historic preservation organization, will result in a historic context and National Register multiple property documentation form. The project will involve outreach to Baltimore City public schools and engagement of students in the research and documentation of Baltimore City properties associated with the African American Civil Rights Movement.

Mallows Bay

Charles County's Mallows Bay harbors 80 WWI-era wooden steamships, in addition to other vessels from various periods. Rich in recreational and educational potential, the bay also has ties to Native American and Civil War history, while serving as a home to numerous rare and endangered species. As the rest of the world begins its commemorations of World War I, 2014 seemed an auspicious time to apply to the National Oceanic and Atmospheric Administration (NOAA) to seek National Marine Sanctuary status for this area. The submission was the culmination of nine months of concerted effort by a community-driven steering committee with state and federal assistance and the enthusiastic support of the governor. We received official notice that it entered the NOAA inventory for consideration on January 12.

Hurricane Sandy Grant Program Launch

Following a \$1.47 million award from the Disaster Relief Appropriations Act (P.L. 113-2) of 2013, MHT awarded \$909,250 to historic sites impacted by Hurricane Sandy, including the John Wesley United Methodist Church (Deal Island), a prominent 1914 landmark built for an African American congregation; the Baltimore Harbor Lighthouse, the largest wooden caisson built in the United States as well as the deepest to be sunk in the United States; and Frederick's Hessian Barracks, which housed a state armory and Civil War hospital before being converted in 1867 into the School for the Deaf.

Online Grants System Launch

To improve efficiency and customer service, MHT launched a new grants management software system. The system allows MHT staff to track grant applications through the entire life cycle of the grant, from online application through final reporting, as well as analyze grants across programs. With the improvements, the grants submission process has been streamlined, applicants are better able to track and manage their own grants online, and staff can follow industry best-practice standards and expedite grants processing. The system also provides enhanced audit capabilities. The FY 2015 Heritage Area Program grants were the first to be submitted online; in the initial grant round, staff received 189 Intent to Apply and Full Application forms from 159 organizations. The ease of the system has encouraged an increase in applications and feedback from users is overwhelmingly positive.

Documenting the Recent Past with the National Institutes of Health

MHT assisted the National Institutes of Health with the ongoing documentation and evaluation of mid-twentieth century resources at their Bethesda campus, pursuant to Section 110 of the National Historic Preservation Act. Properties studied during 2014 included the Biologics Standards Laboratory, where the national standards for many vaccines were established; the National Library of Medicine; the "Tree One" sculpture

designed by Kenneth Snelson; and the Lister Hill Center, one of the first buildings built with infrastructure for teleconferencing, computer cabling, and the electronic distribution of library information. NIH's proactive inventory efforts are generating important documentation on its unique historic resources.

Facilitating Review of the Purple Line Transit Project

After several years of consultation between MHT, the Maryland Transit Administration (MTA), and the Federal Transit Administration (FTA), the agencies successfully executed a Programmatic Agreement (PA) in 2014 to minimize and mitigate the Purple Line's impact on historic properties. The Purple Line is a 16.3-mile light rail transit planned for east-west travel between Bethesda in Montgomery County and New Carrollton in Prince George's County. Cultural resource studies identified 22 National Register eligible or listed properties within the proposed transit path. The PA provides for the active avoidance of adverse effects and protection of six properties, including an archeological site, historic golf course, college campus and parkways. The PA also includes provisions for the recordation of three historic properties that will be demolished. The PA establishes guiding principles for the sensitive design of the project and defines an ongoing consultation process between FTA, MTA, MHT and other interested parties during the design and construction phases of the project.

Commemorating the Buzz One Four B-52 Crash

MHT staff advised on repair to two Garrett County marble monuments dedicated to Major Robert L. Payne and Major Robert E. Townley, who died in the January 1964 crash of the Buzz One Four B-52 bomber. Returning home following a nuclear alert mission over Europe, the bomber met severe wind turbulence in a storm over southwestern Pennsylvania. This was during the Cold War, when the Strategic Air Command had ordered loaded B-52 bombers to be airborne 24 hours a day, flying their routes close to Soviet airfields in an effort at deterrence. Three of the five-member crew perished and monuments were placed where they were found. The Monuments Commission assisted in funding the repair work and participated in the July 12, 2014 commemoration. The large crowd that gathered for the event included local residents and family members of the crew who recalled the rescue and recovery of that tragic week, when the community united to help.

Maryland Historical Trust

2014 Annual Report

Table of Contents

Identification and Evaluation	9
Architectural Research and Survey Program	9
Terrestrial Archeology Research and Survey Program	11
Maryland Maritime Archeology Research and Survey Activities	13
National Register of Historic Places	16
Protection	17
Review and Compliance Program	17
Maryland Maritime Archeology Program Regulatory Activities	25
Terrestrial Archeology Permits	26
Historic Preservation Easement Program	26
Preservation Planning	29
Military Monuments Conservation	30
Maryland Archaeological Conservation (MAC) Laboratory	31
Enhancement	33
Maryland Heritage Areas Program	33
Historical and Cultural Museum Assistance Program	35
Rehabilitation Tax Credit Program	36
Grants and Loans	38
Historic Preservation Grant Program	38
Historic Preservation Revolving Loan Fund	39
Certified Local Government Grant Program	39
African American Heritage Preservation Grant Program	41
Public Outreach	48
Jefferson Patterson Park and Museum	48
Historic Marker Program	51
Annual Preservation Awards	52
MHT Library and Website	57

Maryland Historical Trust 2014 Annual Report

The Maryland Historical Trust (MHT) is the state agency dedicated to preserving and interpreting the legacy of Maryland's past. Through research, conservation and education, MHT assists the people of Maryland in understanding their historical and cultural heritage. Part of the Maryland Department of Planning, MHT serves as Maryland's State Historic Preservation Office. Programs include financial incentives for preservation, such as tax credits, grants and loans; state and federal project review and compliance; statewide preservation planning; terrestrial and underwater archeology; research, survey and designation; heritage tourism; and museum and local government assistance. In addition to its administrative office in Crownsville, MHT includes the Jefferson Patterson Park & Museum in St. Leonard, Maryland, which houses the Maryland Archaeological Conservation Laboratory.

The Director of MHT, which was created in 1961, also serves as the State Historic Preservation Officer, pursuant to the National Historic Preservation Act of 1966. At the end of 2014, MHT bid a fond farewell to J. Rodney Little, who served in both capacities for almost 40 years. Under Mr. Little's leadership, MHT launched the Maryland Maritime Archeology Program, the Heritage Areas Program, the Rehabilitation Tax Credit and the Maryland Archaeological Conservation Laboratory, among other efforts. Elizabeth Hughes, who has served as the MHT Deputy Director and Deputy SHPO since 2002, is serving as Acting Director and State Historic Preservation Officer.

Identification and Evaluation

Architectural Research & Survey Program

Research and survey are the foundation of all preservation activity. These activities develop the data that comprises the Maryland Inventory of Historic Properties, a broad-based catalog of historic resources throughout the state. The Inventory consists of written, photographic, cartographic and other graphic documentation of over 140,000 historic districts, buildings, structures and sites that serve as a physical record of Maryland history. The Inventory is continuously expanding through contributions from the Research and Survey Unit's Statewide Architectural Survey Program, which works with county and local governments and other institutions to identify and document historic resources.



Stabilization and rehabilitation, Melwood Park, Prince George's County

In 2014, staff reviewed final products for a study of resources endangered by sea-level rise in Dorchester

County, a survey of resources in the city of Frederick, inventory forms submitted by Prince George's County and a study of the prehistoric landscape of Anne Arundel County. Staff administered Memoranda of Understanding with state agencies such as the Maryland State Archives and the Department of Natural Resources (DNR), as well as contracts to preservation consultants for research, survey and documentation. In September, MHT hired a new Administrator of the Research and Survey Program.

MHT added 243 standing structures and survey districts to the Maryland Inventory of Historic Properties in 2014 and updated 434 properties. Overall, 16,744 acres were surveyed to determine the presence of historical and cultural resources.

Key activities undertaken by this program included:

- Providing assistance to state agencies, through the State-Owned Cultural Resource Assessment Program, including ongoing support for the Department of General Services and the Maryland School for the Deaf for re-roofing and exterior stabilization of the Hessian Barracks in Frederick.
- Continuing to provide assistance to the Department of General Services and the State House Trust on a major renovation of the Maryland State House. Throughout 2014, construction continued on the restoration of the Old Senate

Chamber. MHT staff provided advice and approval on all design issues and conservation of historic fabric. Completion is scheduled for February of 2015.

- Providing guidance and expertise on major restoration and documentation projects including Charles Carroll House, Hammond Harwood House, Chase Lloyd House, Hessian Barracks (Frederick County), Melwood Park (Prince George's County), Newtown Manor (St. Mary's County), and Wesley Church (Somerset County).

Other activities undertaken by the Research and Survey Program include working with the Department of Natural Resources to undertake a survey of parks damaged by Hurricane Sandy, administering two special archeological projects on the Zekiah Fort Heritage Trail and the Pig Point Archeological Complex, providing technical assistance on barns in Carroll County, developing a predictive model for 19th century maritime-associated facilities along the shores of the Chester River, attending the annual conference of the Vernacular Architecture Forum in New Jersey, and presenting at the William Buckland Symposium and St. John's *Three Centuries of Architecture in Annapolis* lecture series.

Terrestrial Archeology Program

The staff of the Terrestrial Archeology Program provides professional expertise in identification, documentation, and evaluation of archeological sites, which is legislatively mandated. The identification and evaluation of archeological sites plays a key role in fulfilling MHT's other mandates to undertake and direct fundamental research; to encourage the preservation of sites; to cooperate in the scientific excavation of sites when warranted; to cooperate with museums and educational institutions, and, to establish educational programs to train interested members of the public.

Field Session in Maryland Archeology

The program's signature field effort every year is the annual Field Session in Maryland Archeology. Each spring, MHT works with the Archeological Society of Maryland and other partners to investigate a significant Maryland archeological site during an 11-day (including two consecutive weekends) intensive field effort. The field session is designed to involve the public as volunteer archeologists, and all are invited to join for a day, a few days, or the entire session.



Participants at the 2014 Annual Field Session in Maryland Archeology.

In 2014, the field session returned to the Biggs Ford site in Walkersville, Frederick County. Now an agricultural field, the site had been home to two prehistoric Indian villages. The earliest of these villages was occupied between AD 1200 and AD 1400, while the latter was occupied between AD 1400 and AD 1600. With partners and volunteers, MHT excavated over 100 square meters and revealed portions of a palisade, storage pit features and the shadows of posts that once formed part of the supports for a prehistoric house. More than 100 volunteers contributed over 300 days to this highly successful effort.

Additional archeological research and survey activities included:

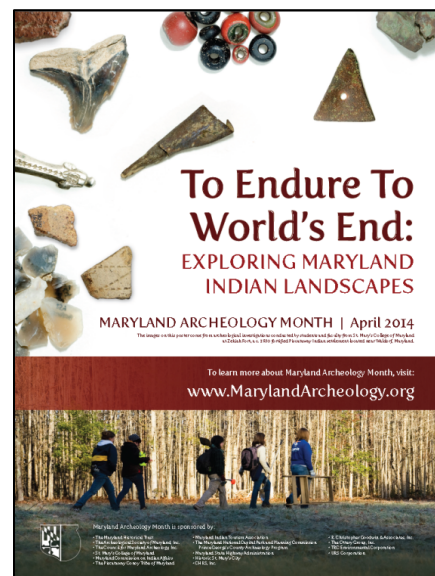
- Organized and staffed a public archeological lab for volunteers on Tuesdays throughout 2014.
- In partnership with Baltimore Heritage and



Volunteer participants at Patterson Park.

the Archeological Society of Maryland, engaged volunteers in the investigation of traces of the War of 1812 buried in Baltimore's Patterson Park.

- Co-sponsored, with the Archeological Society of Maryland, the 23rd Annual Workshop in Archeology in March 2014. Approximately 150 attendees were offered a combination of lectures and hands-on sessions including such wide-ranging topics as a shipwreck in the Gulf of Mexico with a Baltimore origin, remote sensing of Maryland archeological sites, the Anne Arundel County Pig Point site, and basic laboratory techniques for the archeologist.
- Co-sponsored, with the Archeological Society of Maryland, the 49th Annual Spring Symposium on Archeology entitled *"Anticipating Maryland Archeology."* The public was invited to consider past development of techniques and methods in archeology and to think about how these might change in the future. New techniques and technologies are shining a bright light on the future of Maryland archeology. More than 100 members of the public attended.
- Co-sponsored Maryland Archeology Month celebrating the important archeological heritage created by Maryland's diverse inhabitants over the last 12,000 years. MHT solicited participation by event sponsors, created and distributed 2,200 posters and booklets, and worked with its partner organization the Archeological Society of Maryland to create a web-based calendar of events that featured both map views by region and listings by date. Through the 2014 Archeology Month theme – "To Endure to World's End: Exploring Maryland Indian Landscapes" – Marylanders were invited to take consider the fragments of the earlier landscape that endure in the present. Take MD Route 228 in Charles County, for example. MD 228 leaves Bryan's Road for Waldorf, connects with MD Route 5 and continues south into St. Mary's County, where it becomes MD Route 235. Few of the tens of thousands of daily travelers over this route realize that this modern road follows an early Indian path that led from the Piscataway capital on Piscataway Creek to winter hunting quarters and to settlements in St. Mary's County. Many such traces of the past persist in Maryland, and several were discussed in the Archeology Month booklet, which featured 14 essays written by professional archeologists and members of the Maryland Indian community. The website (www.marylandarcheology.org) also featured a gallery of the artifacts with expanded discussion regarding each.



2014 Maryland Archeology Month Poster.

To share research with the public, MHT staff presented papers at the Middle Atlantic Archeology Conference in Langhorne, PA and the Eastern States Archeological Federation meetings in Solomons, MD, presented on the ongoing Archeological Synthesis Project, and submitted an article, "Ossuary Burials in Middle Atlantic Landscapes," to the journal *Archaeology of Eastern North America*.

Maryland Maritime Archeology Program Research and Survey Activities

Underwater archeology research and survey are two of the many tasks of the Maryland Maritime Archeology Program (MMAP). MMAP staff work with the public and with other MHT programs, government agencies and avocational archeology groups to inventory, preserve and interpret Maryland's submerged cultural heritage.

Wicomico River Watershed and Coastal Resiliency Planning Surveys

MMAP and the Terrestrial Archeology Program began a series of reconnaissance efforts, including a survey of unexplored areas and field inspection of reported archeological sites within the Wicomico River watershed in St. Mary's and Charles counties. This work was undertaken in coordination with Dr. Julia King of St. Mary's College of Maryland with intern support provided by the college. Michael J. and Laura Sullivan generously provided housing and dockage for the crew during field operations.



MMAP Staff Susan Langley, Haddon

MMAP staff worked with volunteer Bill Utley and intern Madeline Roth on marine geophysical surveys using magnetometer and side scan sonar systems in the Wicomico River and Charleston, Haddon and Manahowic creeks during June, July and October 2014. MHT staff began non-intrusive surveys searching for previously unidentified and inspecting known archeological sites within these areas during September 2014. To date, the team has refined existing records and identified sites of uncertain date and significance including shell middens, historic wharves and an assortment of discarded watercraft believed to date from between the 18th and 20th centuries. Research and data analyses are ongoing and results will be used to plan further work in 2015.

MHT staff are planning four weeks of field work involving pedestrian and marine geophysical surveys of areas impacted or at risk as a result of Hurricane Sandy and climate change on Maryland's Eastern Shore. Work will be supported by a grant from the National Park Service and begin during 2015.

Levin J. Marvel

MMAAP continued research and exploration of the site of the sunken ram schooner *Levin J. Marvel*. When it sank in Hurricane Connie in August, 1955, the ship took 19 of 23 guests and crew with it. The loss of *the Marvel* spurred passage of the Bonner Act that instituted regulations for safe boating. Although U.S. Coast Guard divers visited the site in 1987, as do recreational divers on occasion, it had not been examined archeologically. Upon completion of investigations in 2015, a National Register nomination will be submitted.

Partnerships

MMAAP participates in and acts as coordinator/facilitator for projects that involve broad partnerships with federal agencies such as the National Park Service, U.S. Navy, Bureau of Ocean Energy Management (BOEM), U.S. Coast Guard and the National Oceanic and Atmospheric Administration (NOAA), including serving on NOAA's Monitor National Marine Sanctuary Advisory Council. MMAAP staff also participated in the NOAA Marine Protected Areas (MPA) Federal Advisory Committee Cultural Heritage Resources Working Group with the goal of developing a toolkit for MPA managers that would help address archeological and submerged cultural resources within the MPA system.

In 2014, MMAAP also took part in public events and provided numerous presentations and lectures on maritime archeology, in person and via telepresence, as well as press opportunities. Staff attended the Society for Historical Archaeology annual meetings in Quebec City in January and participated in the State Underwater Archaeology Managers' panel, Governmental Affairs Committee, and UNESCO Committee.

Gulf of Mexico Shipwreck Investigation

NOAA, BOEM and partners in Texas invited MMAAP to help examine and test a shipwreck that they suspect had originated in Baltimore, although it now rests in more than 4,000 feet of water in the Gulf of Mexico. MMAAP staff participated with more than 20 scientists working from two remote command centers; additional scientists were on NOAA's research vessel *Okeanos Explorer*. Artifacts previously collected are still undergoing analysis; therefore, the team focused on biological work in 2014, discovering at least two new species living on the shipwrecks. Among the many partners are three universities, two states, two private foundations and three federal



MHT Staff Matt McKnight, Wicomico River watershed survey

agencies. The majority of funding came from the private foundations with the state and federal agencies contributing staff time.

Nautical Archaeology Society

MMAP staff undertook training to become a Nautical Archaeology Society (NAS) International Training Partner and will integrate the NAS program into its portfolio of outreach and education activities to better serve Maryland's citizens. Through the NAS program, MMAP will raise awareness of Maryland's rich maritime heritage and submerged archeological resources by providing a strong foundation and framework for the development of educational programming, geared toward those with a general interest in maritime and underwater archeology. MMAP will also assist in training those who desire to volunteer on archeological projects sponsored by the NAS program and other government or nonprofit organizations, locally and internationally. MMAP will guide students through the NAS curriculum and plans to develop further courses on topics relevant to the maritime history and archeology of Maryland. MMAP-sponsored NAS training activities will begin in 2015.



MMAP staff Troy Nowak at the 2014 Field Session in Maryland Archeology



Madeline Roth and Bill Utley, volunteers, Wicomico River watershed survey

National Register of Historic Places

Administered in Maryland by MHT, the National Register of Historic Places is a federal program designed to recognize properties significant in American history and culture. During 2014, 10 proposals to nominate Maryland properties to the National Register were reviewed by the Governor’s Consulting Committee; the committee recommended that 10 nominations be forwarded to the National Park Service for final listing.

In 2014, the National Park Service added six Maryland individual properties and two historic districts, comprising a total of 2,755 contributing resources, to the National Register of Historic Places. These noteworthy properties represent a broad range of historic resources, including urban rowhouse neighborhoods in East Baltimore; a 1920s country retreat and environmental education center Prince George's County; a 5,770-acre cultural landscape whose history spans 3,000 years; the residence of a former Maryland governor, Edwin Warfield. The Register also accepted a statewide context recognizing Rosenwald Schools of Maryland.

2014 NATIONAL REGISTER LISTINGS	
Jurisdiction	National Register Listing
Statewide	Rosenwald Schools of Maryland (Multiple Property Submission)
Baltimore City	Berea/Biddle Street Historic District Brewers Hill Historic District
Caroline County	Nanticoke Lodge, Federalsburg
Dorchester County	Rock M. E. Church, Cambridge
Howard County	Carrollton Hall, Ellicott City Oakdale, Woodbine
Frederick and Washington counties	Catoctin Mountain Park, Thurmont
Prince George’s County	Hard Bargain Farm, Accokeek Ridgeley School, Capitol Heights

Protection

Review and Compliance Program

MHT's Review and Compliance Program administers review of state and federal undertakings to ensure Maryland's important historic and archeological properties will not be adversely affected or destroyed by the actions of federal and state agencies or by entities receiving assistance from those agencies. This regulatory program fulfills federal and state responsibilities under Section 106 of the National Historic Preservation Act of 1966 and the Maryland Historical Trust Act of 1985. Through consultation with the involved agencies, project sponsors, local governments and members of the public – MHT assists program users in fulfilling their historic preservation responsibilities and ensures the appropriate stewardship of Maryland's heritage resources.

Compliance Reviews in 2014	
Federal Program Responsibilities	Total
Findings of "No Properties"	2532
Findings of "No Effect"	320
Findings of "No Adverse Effect"	1263
Findings of "Adverse Effect"	27
Findings of "Potential Effect"	398
Federal Project Subtotal	4540
Properties meeting National Register Criteria	116
Properties not meeting National Register Criteria	458
Memoranda of Agreement	14
Programmatic Agreements	3
State Program Responsibilities	
Findings of "No Properties"	853
Findings of "No Effect"	101
Findings of "No Adverse Effect"	530

In 2014, MHT staff reviewed over 6,400 public undertakings to assess the effects of those projects on historic and archeological properties. The consultation resulted in the development of 21 Memoranda of Agreement, three Programmatic Agreements, and 11 Significantly Reduce

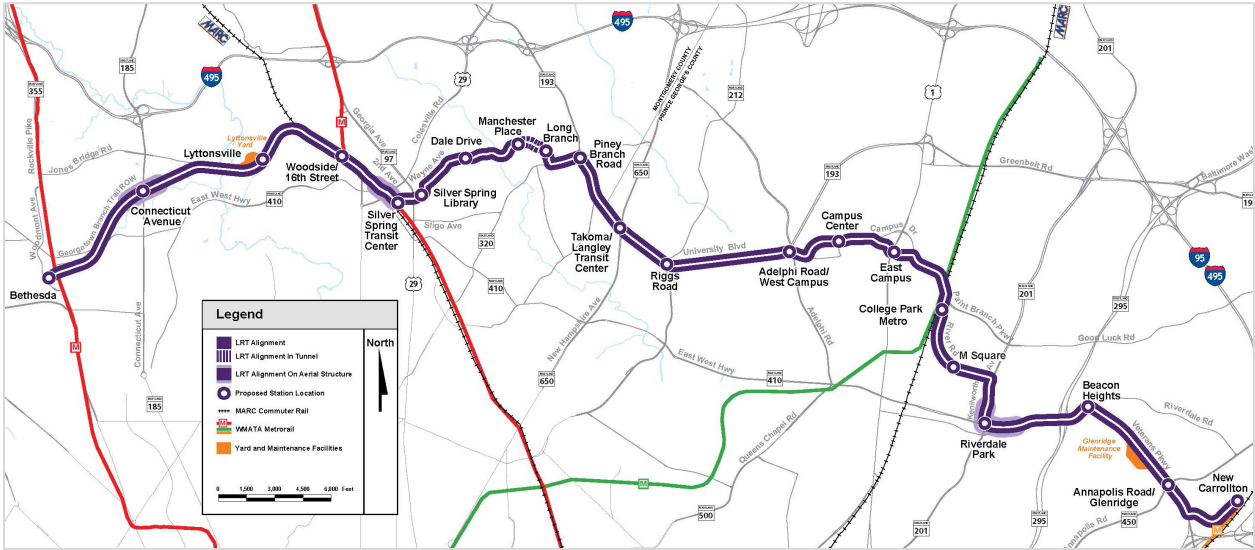
Findings of "Adverse Effect"	51
Findings of "Potential Effect"	350
State Project Subtotal	1885
Properties meeting MD Register Criteria	7
Properties not meeting MD Register Criteria	13
Memoranda of Agreement /	7
Significantly Reduce Adverse Effects Letters	11
Programmatic Agreements	0
STATE AND FEDERAL PROJECTS TOTAL	6425

Effects Letters to resolve the adverse effects of projects or programs on significant cultural resources and afford mitigation measures. Staff also provided extensive technical assistance to program clients through meetings, site visits, telephone and email contacts, document reviews, agreement negotiations, participation in interagency working groups, and agency trainings. The following table summarizes staff reviews in 2014:

Notable Case Reviews and Interagency Partnerships

MHT staff focused its 2014 efforts on reviewing a high volume of projects as well as continuing to advance its partnerships with federal and state agencies, agency program customers and local governments. Through extensive collaboration, MHT worked to streamline the review process while ensuring compliance with historic preservation requirements and promoting the suitable treatment of Maryland's diverse heritage resources. Selected projects and partnerships are highlighted below.

Purple Line Transit Project



After several years of consultation between MHT, the Maryland Transit Administration (MTA), and the Federal Transit Administration (FTA), the agencies successfully executed a Programmatic Agreement (PA) in 2014 to minimize and mitigate the Purple Line’s impact on historic properties. The Purple Line is a 16.3-mile light rail transit planned for east-west travel between Bethesda in Montgomery County and New Carrollton in Prince George’s County. Cultural resource studies identified 22 National Register eligible or listed properties within the path of the proposed Purple Line. The PA includes provisions for the recordation of three historic properties that will be demolished. In addition it provides for the active avoidance of adverse effects and protection of six additional properties, including an archeological site, historic golf course, college campus and parkways. The PA establishes guiding principles for the sensitive design of the project and defines an ongoing consultation process between FTA, MTA, MHT and other interested parties during the design and construction phases of the project.

Maryland Transit Administration (MTA), Federal Transit and Federal Railroad Administrations

MHT continued coordination with the MTA on the identification and consideration of historic properties for multiple transit studies, initiatives to upgrade existing railroad facilities and other projects. Notable studies undertaken in 2014 included the



Amtrak’s historic Susquehanna River Bridge connecting Cecil and Harford Counties

Corridor Cities Transitway, Amtrak's Susquehanna River Bridge, and the Baltimore & Potomac Tunnel Project. MHT staff also continued participation in interagency coordination for Tier 1 of the Northeast Corridor Future planning study.

State Highway Administration (SHA) and Federal Highway Administration (FHWA)

MHT maintained close cooperation with SHA and FHWA to fulfill compliance through reviews of numerous transportation improvement projects statewide, implementation of the Programmatic Agreement (PA) for Minor Highway Projects and the PA for Historic Highway Bridges. Staff attended monthly interagency review meetings, interagency manager's meetings, and administered the 12th year of cooperative federal/state funding for the Preservation Officer/ Transportation Reviewer position at MHT. MHT executed multiple Memoranda of Agreement (MOA) to resolve project adverse effects on historic properties, particularly for historic bridge improvement and replacement projects, and continued implementation of existing MOAs. Staff also reviewed numerous local and private projects subject to SHA permits or recipients of FHWA aid. Notable studies undertaken in 2014 include the US 219 Corridor, the US 220 Corridor, the Suitland Parkway Interchange Project and the MD 355 Bridge Replacement within the Monocacy National Battlefield.

Federal Emergency Management Administration (FEMA)

MHT and FEMA continued implementation of the Programmatic Agreement for the historic campus of the National Emergency Training Center (NETC) in Emmitsburg. The center is occupied by the U.S. Fire Administration, the National Fire Academy and the Emergency Management Institute.

Hurricane Sandy Disaster Recovery

MHT continued coordination with DHCD and FEMA Region III staff regarding Hurricane Sandy disaster recovery efforts. In addition, staff facilitated prompt review of other agency programs targeted to assist local governments, individuals and business including reviews for MHT's own National Park Service-funded Hurricane Sandy Disaster grant projects.

National Institutes of Health

MHT assisted the National Institutes of Health with the ongoing documentation and evaluation of mid-20th-century resources at its Bethesda campus pursuant to Section 110 of the National Historic Preservation Act. Properties studied during 2014 included the Biologics Standards Laboratory, where the national standards for many vaccines were established, National Library of Medicine, "Tree One" sculpture designed by Kenneth



Crisfield Harbor

Snelson, and the Lister Hill Center, one of the first buildings built with infrastructure for teleconferencing, computer cabling, and the electronic distribution of library information. NIH's proactive inventory efforts are generating important documentation on its unique historic resources.



The historic Lister Hill Center and "Tree One" sculpture at NIH's Bethesda campus were included within NIH's survey and documentation of historic properties this year.

Maryland Department of Housing and Community Development (DHCD) and Housing and Urban Development (HUD)

MHT had extensive consultation with HUD, DHCD, Maryland counties and local jurisdictions, and project sponsors regarding the review of various housing and community development projects for effects on historic properties. Staff provided substantive technical assistance to project sponsors to ensure the appropriate treatment of historic properties through adherence to the Secretary of the Interior's *Standards for the Treatment of Historic Properties*. Staff also participated on the review panels for the Community Legacy and Smart Growth Impact Fund grant programs to ensure suitable consideration of historic preservation issues in the ranking process.

Baltimore City Housing Programs

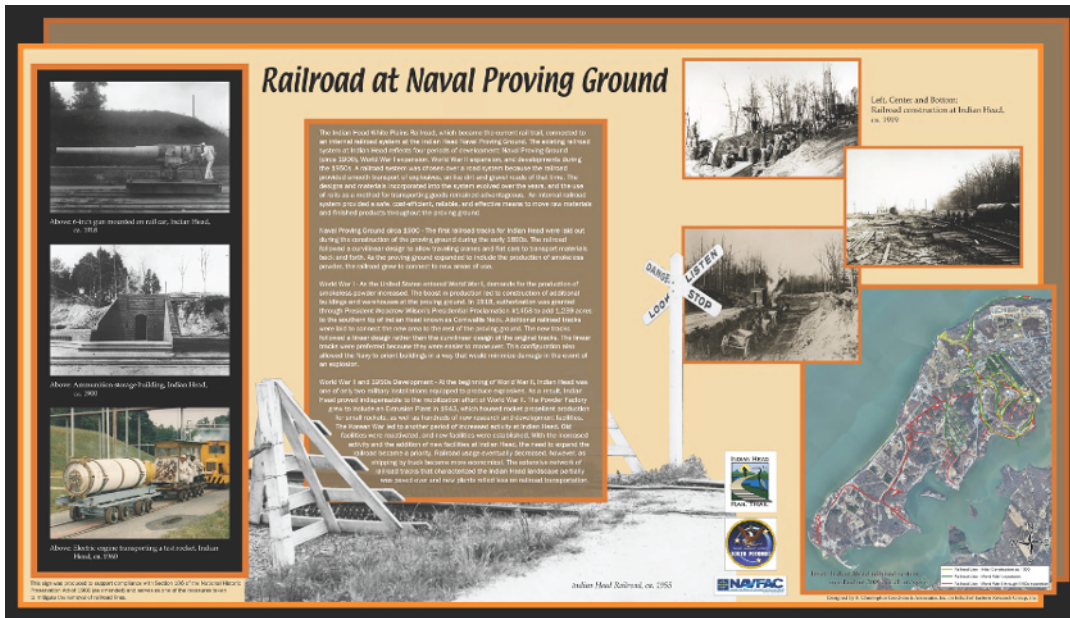
MHT and the Housing Authority of Baltimore City (HABC) continued consultation on the review of individual projects, implementation of existing agreement documents and fulfillment of mitigation requirements. MHT and HABC had extensive discussions, including work sessions and site visits, regarding the city's blight elimination efforts and consideration of historic properties issues as part of demolition planning.

Corps of Engineers (COE) & Maryland Department of the Environment (MDE)

MHT focused considerable collaboration with COE, MDE and applicants for wetlands and waterways permits to ensure the successful fulfillment of review requirements and treatment of historic properties for projects throughout Maryland. Staff attended monthly COE/MDE Joint Evaluation and wetland mitigation banking interagency meetings as well as held regular COE/MHT coordination meetings to discuss project-specific and program-related issues and enhance the agencies' working relationships. MHT provided substantive review and comments on the MD SHA Umbrella Mitigation Banking Instrument, and also provided assistance to permit applicants to facilitate the review process for various undertakings including New Windsor Quarry, Green Branch Park, Warren Road, Shannon's Glen, Harbors at Solomons, APEX Wind Energy, Great Bay Wind, Keys Energy, WSSC sewer rehabilitation, proposed mitigation banking sites and other projects.

Maryland Department of Natural Resources (DNR)

MHT coordinated with DNR on many projects throughout the state, including activities on DNR lands and projects assisted by DNR programs. MHT continued its coordination with Charles County and DNR on a proposed interpretive visitors' center on a bluff overlooking Nanjemoy Creek at Friendship Farm Park. The project area contains at least three prehistoric ossuaries (mass burials) containing the skeletal remains of several hundred individuals. MHT recommended a remote sensing survey of the property to acquire additional information regarding the boundaries of the ossuaries and the survey resulted in the identification of at least eight additional ossuaries within the proposed project area. As this is a sensitive area containing American Indian human remains, MHT is continuing to consult with Charles County, DNR and the Piscataway Conoy Tribe to identify viable alternative locations for the visitor center and advocate for the in-place preservation of the ossuaries.



This interpretive wayside panel tells the story of railroad development at the Naval Proving Ground, 1900-1950. The Navy installed the wayside at the head of Charles County's Indian Head Rail Trail, where it is publicly accessible as well as within the installation.

U.S. Navy. MHT had extensive coordination with the Navy on the appropriate treatment of historic and archeological properties and Section 106 review of undertakings at the Walter Reed National Military Naval Medical Center in Bethesda, U.S. Naval Academy, Patuxent River Naval Air Station, Solomon's Naval Recreation Center, Webster Field Annex, Indian Head and Carderock Naval Support Facilities, and other facilities managed by Naval District Washington. Staff participated in regular meetings and site visits with individual facilities to improve cooperation and streamline the review process. Notable projects this year include planning for the construction of a new two-deck parking structure and the Center for Cyber Security Studies building within the historic landscape at the U.S. Naval Academy. This year Indian Head developed an interpretive wayside panel as part of mitigation for the removal of historic rail lines on the installation.

Veterans Administration (VA)

MHT coordinated with the VA and other parties regarding the review and treatment of historic properties at the Perry Point VA Medical Center, Perry Point the Community Living Center project entails construction of a new 155-bed facility. The new building would comprise approximately 160,000 square feet with a connection to the existing center-wide service tunnel/corridor system. In addition, the undertaking includes construction of an addition to Building 321, installation of a geothermal field south of Building 364 and the demolition of historic Building 9H.

U.S. Army.

MHT continued ongoing consultation for undertakings at Fort Meade, Fort Detrick and Aberdeen Proving Ground to assist the Army in fulfilling its historic preservation responsibilities.

Proposed Maryland Energy Projects

MHT closely collaborated with the COE/MDE, DNR's Power Plant Research Program, project sponsors and other interested parties on the review and appropriate consideration of historic and archeological properties in the planning for multiple proposed energy projects including: Line MB Natural Gas Pipeline Extension, Dominion Cove Point Liquefaction Project, ECI Biogas facility, Great Bay Wind, Keys Energy, Cambridge Solar, and multiple other solar and wind energy projects. Involvement included attendance at the monthly COE/MDE interagency energy Joint Evaluation meetings, site visits and review of project planning materials and the results of cultural resources investigations.



The solar shingles on this Bethesda home are a successful example of clean energy technologies sensitively applied to

Maryland Energy Administration (MEA)

MHT continued implementing the streamlined review process for energy efficiency and weatherization projects funded by Department of Energy and administered through the MEA and Department of Housing and Community Development (DHCD), under a statewide Programmatic Agreement. The process has allowed MEA and DHCD to deliver prompt service to grant recipients and proactively guide the sensitive installation of photovoltaic panels and other clean energy technologies on many historic buildings.

U.S. Fish and Wildlife Service (USFWS)

MHT worked with USFWS on a number of projects in 2014, including a partnership among USFWS, DNR and Anne Arundel County to construct a new boating facility at Fort Smallwood Park. Following consultation with MHT, the project was expanded to include the stabilization and eventual rehabilitation of a previously abandoned early 20th- century park concession building.

National Park Service (NPS)

MHT continued its partnership with NPS facilities in Maryland under the nationwide Programmatic Agreement through project specific reviews, annual reports, site visits coordination meetings, and ongoing consultation with staff from the NPS parks in Maryland

including: C&O Canal, Catoctin Mountain Park, Antietam Battlefield, Monocacy Battlefield, Fort McHenry, Hampton Mansion, Assateague, Fort Washington, Piscataway Park, Glen Echo and Clara Barton House, Baltimore and George Washington Parkways, Suitland Parkway, Appalachian Trail, and Thomas Stone parks. Through these collaborative efforts, MHT and NPS are working to safeguard the appropriate stewardship and interpretation of the diverse cultural heritage located on NPS lands in Maryland.

Technical Assistance and Outreach Activities

Throughout 2014, MHT Review and Compliance staff provided a wide range of technical assistance to private and government entities to facilitate prompt and effective compliance with relevant statutory

historic preservation responsibilities. In addition, staff presented formal trainings on the review process and historic preservation issues to government agencies and organizations including: the Comptroller's annual Capital Projects Seminar for Bond Bill recipients



MHT staff explains the project review process at the Comptroller's annual workshop for bond bill recipients.

(two sessions); Baltimore City's Housing and Planning offices; the Maryland and District of Columbia's Utilities Association regional environmental conference; and panel presentation on *Successful Modernization of Historic School Buildings* at the Association of School Business Officers' conference.

Maryland Maritime Archeology Program (MMAP) Regulatory Activities

Working closely with the Review and Compliance Program, MMAP reviews state and federal undertakings that have potential to affect historic properties in Maryland waters. In 2014, MMAP staff reviewed 619 undertakings pursuant to federal and state historic preservation laws, in addition to providing extensive technical assistance to public and private clients through meetings, telephone and email contacts, and site visits.

MMAP represents MHT at the Maryland Aquaculture Review Board to help streamline the aquaculture application process and, in 2015, will represent MHT on the Maryland Artificial Reef Committee to assist Maryland Artificial Reef Initiative partners in compliance with state and federal historic preservation laws.

MMAP and the Review and Compliance Program continued to work with the Bureau of

Ocean Energy Management Renewable Energy Program on issues related to offshore wind energy development within the Maryland Wind Energy Area. MMAP also continued its involvement with the Maryland and Potomac Area Committee (formerly the Upper Chesapeake Bay Estuary Area Committee) and participated in maritime security and emergency response meetings, trainings, and exercises in order to coordinate and integrate consideration of cultural and historic resources into emergency-response activities.

Terrestrial Archeology Permits

The issuance of terrestrial archeology permits is the primary mechanism for ensuring considerate stewardship of archeological resources owned by the state. The Terrestrial Archeology Permit program provides a process for partnership between state land managers, MHT and those individuals and institutions that seek to excavate state-owned archeological sites. Through this regulatory partnership, state land management and archeological expertise are brought together in a way that safeguards archeological heritage while allowing wise use for researchers, the general public and future generations of Marylanders.

Four terrestrial archeology permits were issued in 2014 for archeological work undertaken in support of an environmental assessment for improvements to Martin State Airport and three projects conducted in Historic St. Mary's City, including the excavation of the charnel pit at the Brick Chapel and the annual Field School on the campus of St. Mary's College.



Students participate in dig at the St. Mary's College 2014 Field School

Historic Preservation Easement Program

The Historic Preservation Easement Program is the highest form of protection for any historic, archeological or cultural resource in Maryland. It protects the state's financial investments and offers private owners the ability to protect their property by ensuring that these resources continue to be cared for and made available to the public in perpetuity. In turn, these resources contribute greatly to the development of the state's heritage tourism initiatives and heritage-related educational programs. In 2014, MHT acquired 17 new easements or modifications. The easement program now holds 698 easements on over 839 properties, encompassing approximately 9,196 acres statewide.

With the assistance of the MHT Board of Trustees, the easement program continued to fund an easement processor position to process all new and backlogged historic preservation easements, as well as an easement inspector position to conduct inspections and aid in

bringing properties into compliance with their deed of easement.

During the year, the Easement Committee reviewed approximately 186 requests from property owners/operators for changes to these easement properties, including full-scale projects and minor alterations.

New easements accepted for 2014 include:

New MHT Easements in 2014					
County	Easement Name	Scope of Easement	Recordation Date	Source	Acres
Baltimore County	Towson Armory	Exterior, Archeology	12/24/2014	Section 106/ Government Property Transfer	.6337
Charles	Port Tobacco Jail House Lot	Exterior, Archeology	10/23/2014	MHAA FY12	.104
Charles	Port Tobacco Courthouse Property	Exterior, Archeology	10/23/2014	MHAA FY12	.505
Somerset	St. James U.M.E. Church	Modification	10/06/2014	AAHPP FY14	-
Carroll	Alumni Hall (McDaniel College)	Interior, Exterior, Archeology	9/18/2014	Bond Bill 2012	.505
Howard	Curtis-Shipley House	Interior, Exterior, Archeology	08/29/2014	Gift	7.46
Montgomery	Sandy Spring Odd Fellows Lodge	Modification	08/27/2014	AAHPP FY13	.29
Charles	Linden (Charles Co)	Modification	08/08/2014	Gift	-
Cecil	St. Patrick's Chapel	Exterior, Archeology	8/11/2014	MHT Capital FY09	0.68
Somerset	Crisfield Armory	Interior, Exterior, Archeology	07/30/2014	Section 106/ Government Property Transfer	1.59

New MHT Easements in 2014

County	Easement Name	Scope of Easement	Recordation Date	Source	Acres
Queen Anne's	Centreville Armory	Interior, Exterior, Archeology	08/04/2014	Bond Bill 2013	.529
Dorchester	Wallace Office Building	Interior, Exterior, Archeology	06/24/2014	MHT Capital FY07	.053
Montgomery	Poole's (Senaca) Store	Interior, Exterior, Archeology	06/10/2014	MHAA FY11	.132
Calvert	George E. Rice House and Outbuildings	Interior, Exterior, Archeology	1/16/2014	AAHPP FY	.603
Baltimore City	Mansion House Maryland Zoo	Modified Interior, Exterior, Archeology	01/02/2014	Bond Bill 2014	.517
Baltimore City	Elephant House Maryland Zoo	Exterior, Archeology	01/02/2014	Bond Bill	.258
Baltimore City	Goucher College	Exterior, Archeology	7/10/2013	Section 106/ Government Property Transfer	20.32
Baltimore City	Enoch Pratt House & Keyser Library	Modification	7/31/2013	-	-
Anne Arundel	Hammond Harwood House	Modification	10/21/2013	-	-
Talbot	Asbury Methodist Episcopal Church	Exterior, Archeology	10/25/13	AAHP FY2013	0.246

New MHT Easements in 2014					
County	Easement Name	Scope of Easement	Recordation Date	Source	Acres
Harford	Mt. Pleasant At Bulle Rock	Interior, Exterior	12/18/13	Section 106/ Government Property Transfer	3.015
Baltimore City	Union Baptist Church of Baltimore	Exterior, Archeology	12/18/13	AAHP 2013	.2653

Preservation Planning

Under the federal Historic Preservation Act, MHT, acting as the State Historic Preservation Office, has certain preservation planning responsibilities, including the preparation of a State Historic Preservation Plan. MHT also provides historic preservation planning assistance to its local government partners, particularly Maryland's 21 Certified Local Governments. Through the State Clearinghouse, MHT provides assistance for state planning initiatives, such as the review of local jurisdictions' comprehensive planning documents, and contributes to state planning documents.

PreserveMaryland

In March 2014, the National Park Service approved MHT's five-year statewide plan, PreserveMaryland, to guide the work of the public and private-sector preservation community. The plan, which was developed in consultation with the public, envisions that by 2018, "the preservation community has sufficient public and private support to identify, document and protect diverse places of historic and cultural significance." To achieve this vision, PreserveMaryland calls upon public agencies, private organizations and individuals involved in preservation to meet five goals:

- Connect with Broader Audiences
- Improve the Framework for Preservation
- Expand and Update Documentation
- Build Capacity and Strengthen Networks
- Collaborate Toward Shared Objectives

PreserveMaryland builds on the work of MHT and the efforts of the statewide preservation community, as well as the State of Maryland's special commitment to preservation through heritage tourism, promoting sustainable communities and protecting places of importance to Maryland's diverse heritage. A dynamic document, PreserveMaryland has been

published in an interactive format online and will be updated over the life of the plan.

Military Monuments Conservation

MHT staff provide support to the Governor’s Commission on Maryland Military Monuments, created in 1989 to inventory the approximately 400 military memorials honoring Maryland's veterans, to raise funds and manage restoration and preservation of those in need, and to develop educational and tourism materials relating to their history.

The Commission is administered by the Department of Veterans Affairs, whose budget includes an annual allocation for monuments preservation approved by the Maryland General Assembly. Under the direction of MHT, repairs and conservation treatment are administered by conservation and historic preservation professionals. MHT hosts four Monuments Commission meetings per year.



Howard Wellman Conservation applies wax to the Prince George’s County World War I Memorial in Upper Marlboro.

In 2014, MHT staff coordinated conservation maintenance for 22 outdoor bronze and stone sculptural monuments and plaques:

- the Baron de Kalb Monument at the State House, the St. John’s College World War I and the French Soldiers and Sailors monuments in Annapolis;
- the Henry Baldwin Memorial in Millersville;
- the Mount Washington All Wars Veterans Monument, the Mount Vernon Place Key Tablet, and the Baltimore City College High School World War I Tablet in Baltimore City;
- the Westowne World War II Tablet, the Towson Wayside Cross World War I Monument, and the Relay World War I Tablet and World War II Monument in Baltimore County;



Townley and Wooten family members and Bucky Schriver of the Buzz One Four Memorial Committee with repaired monument to Major Robert E. Townley, one of crew members of the B-52D bomber that crashed in Garrett County on January 13, 1964.

- the Civil War and World War II monuments and the War of 1812 cannon at the Howard County courthouse in Ellicott City; the College Park World War II Tablet in Prince George's County;
- the World War I, World War II and Korea/Vietnam monuments at the Calvert County courthouse in Prince Frederick; and
- the Civil War Monument, Braddock Tablet and Brown Memorial Plaque in Rockville.

MHT staff also:

- advised on repair to two marble monuments in Garrett County that commemorate crew members who died in the January 1964 crash of the Buzz One Four B-52 bomber. The Monuments Commission assisted in sponsoring the work and participated in the July 12, 2014 commemoration.



Fairchild C-123K Provider "Thunder Pig" flies overhead during the July 12, 2014 commemoration of the crash of the B-52D bomber in Garrett County on January 13, 1964.

- coordinated the framing of copper plaques from the Fairmount Heights World War II Monument in Prince George's County.
- awarded a contract for conservation maintenance of 16 Maryland military monuments in the western part of the state, to be accomplished in spring of 2015 at a cost of \$16,257.

Maryland Archaeological Conservation (MAC) Lab

The MAC Lab, administered by Jefferson Patterson Park and Museum, houses the state's archeology collection, which includes over eight million objects collected over the past 100 years. The MAC Lab serves as the statewide support facility for artifact conservation. Lab staff conserved artifacts from, among others, the Southampton County Historical Society, Dovetail Cultural Resources Group, Morris County Park Commission, NAS Patuxent River Cultural Resources, Archaeological Society of Virginia, U.S. Marine Corps Base, Quantico, A.D. Marble and Company, City of Deadwood, Monocacy National



MAC Lab staff cleaning a pig jaw

Battlefield and the National Park Service.

MAC Lab staff also:

- Provided lab tours to 631 individuals and conducted outreach and activities in local schools.
- Received 55 new archeological collections, totaling 232 boxes of artifacts.
- Began pilot testing a database that will be used to create a finding aid for Phase II and III collections in the Lab. The Maryland State Highways Transportation Enhancement Program has funded this project.
- Awarded funding to three scholars during the second year of funding for the Gloria S. King Research Fellowship in Archaeology. This fellowship, which will continue for at least five years, will be used to support the research of scholars using archeological collections curated at the MAC Lab.
- Worked with Ft. Lee's Regional Archaeological Curation Facility to collaborate on a Defense Legacy project to address archeological digital curation needs by evaluating tDAR (the Digital Archaeological Record) as a potential Department of Defense repository.
- Completed the 2014 Public Archaeology season; 232 participants spent 684 hours digging at the site or processing artifacts in the lab. The field crew continued to excavate at the Smith's St. Leonard site in the area west of the kitchen, and uncovered more postholes, clearly representing several different buildings.
- Added two sections to the Diagnostic Artifacts in Maryland webpage, as well as substantially revising a previously posted section.
- Published several articles in archeological journals or edited volumes in 2014.



A MAC Lab Family Tour

Enhancement

Maryland Heritage Areas Program

The Maryland Heritage Areas Program was created in 1996 to foster economic growth through the creation of locally based, state designated “Certified Heritage Areas,” where investment is targeted into tightly defined geographic areas to produce measurable preservation and economic development benefits through heritage tourism. In heritage areas, individuals, businesses, non-profits and governments form partnerships to preserve the best of Maryland’s historic sites and towns, unspoiled natural landscapes and enduring traditions. These tangible links to both place and the past encourage residents to recognize they have a special piece of the American story to treasure and share with others, and that in doing so they create more livable and economically sustainable communities. To participate in the program and be eligible for 50-50 cost-sharing with the state, partnerships of local government and private sector interests complete and adopt a forward-looking management plan and create a local management entity to implement the plan.

MHT provides staff support to the Maryland Heritage Areas Program and its governing body, the Maryland Heritage Areas Authority (MHAA). At the close of 2014, Maryland’s 12 Certified Heritage Areas included Canal Place in Cumberland; the Lower Susquehanna Heritage Greenway in Harford and Cecil counties; the Four Rivers Heritage Area encompassing Annapolis, London Town, and south Anne Arundel County; the Baltimore City Heritage Area; the Anacostia Trails Heritage



Interior restoration of the historic Teackle Mansion, a museum and education center located in the Lower Eastern Shore Heritage Area, was supported by Maryland Heritage Areas Authority grant funding.)

Area in Prince George’s County; the Lower Eastern Shore Heritage Area in Somerset, Wicomico, and Worcester counties; the Heart of Chesapeake Country Heritage Area in Dorchester County; the Heart of the Civil War Heritage Area in Carroll, Frederick, and Washington counties; the Montgomery County Heritage Area; the Southern Maryland Heritage Area in Calvert, Charles and St. Mary’s counties; the Stories of the Chesapeake Heritage Area in Caroline, Kent, Queen Anne’s and Talbot counties; and Maryland’s newest heritage area, the Mountain Maryland Gateway to the West Heritage Area in Garrett

County. During 2014, the Patapsco Heritage Greenway, Inc., in partnership with Baltimore and Howard counties, worked on developing a management plan to create a Certified Heritage Area within the Patapsco River Valley in Baltimore and Howard counties. If successful, local governments and organizations within the Patapsco Heritage Area would be eligible to receive program benefits including grants, loans and certain tax credits.

Strategic Plan Implementation

In 2014, MHAA continued to implement its 10-year strategic plan, *Maryland Heritage Areas Authority: Charting a Sustainable Course for the Next Decade 2010 – 2020*. Developed with assistance from a National Park Service *Preserve America* grant, the Strategic Plan recommends strategies in the areas of management, stewardship, heritage tourism marketing and product development, communication, and performance evaluation. In each section, the strategies are presented in priority order and according to a proposed schedule. In 2014, MHAA created a Performance Measures Working Group of MHAA members, staff and local heritage area management entity representatives to develop two sets of program performance measures: one to measure the statewide impact of the overall Maryland Heritage Areas Program, and a second to assess the performance of local Certified Heritage Area management entities.



The preservation and restoration of Greensboro's Benjamin House Studio as a museum and visitor information kiosk on the Harriet Tubman Underground Railroad Byway, located in the Stories of the Chesapeake Heritage Area, was supported by Maryland Heritage Areas Authority grant funding.

Heritage Area Grants

In 2014, 112 grant applications were submitted totaling \$4,882,454 for funding heritage tourism projects and activities statewide. MHAA awarded \$2,766,380 in matching grant funds to 62 projects statewide, including two applications for mid-year emergency grants. These 2014 grants will leverage \$14,789,516 in non-state matching fund investment in Maryland communities. Since its inception in 1996, the Maryland Heritage Areas Authority has awarded approximately \$31.2 million in financial assistance and leveraged over \$111.3 million in non-state funds for heritage tourism projects and activities statewide.



Maryland Heritage Areas Authority grant funding was used to develop a "War of 1812 Teacher Resource Guide" and lesson plans and create and implement six Professional Development Workshops for K-12 Social Studies Supervisors and Teachers on the War of 1812, Baltimore National & State Heritage Area.

During 2014, MHAA, in cooperation with MHT's grant programs, implemented a grants lifecycle management software system that has moved most the grant application, review and tracking processes online. All users of the MHAA and MHT grant programs now are able to complete most grant requirements online, including: application completion and submission; review and ranking of applications by staff and outside reviewers; submission of required of reports and payment requests by grant recipients; and MHAA and MHT grants managers are able to much more

effectively track the progress of grant funded projects, provide timely feedback to Grantees, and more effectively measure grant program performance.

Partnerships

In 2014, MHAA and MHT staff continued to serve on a number of committees and working groups of other partner heritage tourism programs. These include the National Park Service Chesapeake Bay Gateways and Water Trails Program Working Group, the Maryland Scenic Byways Advisory Committee, the Harriet Tubman State Park Planning Committee, advisory committees to the Maryland War of 1812 Bicentennial Commission, the Maryland State Arts Council's Arts and Entertainment Districts Advisory Committee, the State Highway Administration Tourist Area and Corridor Signage Advisory Committee and the Transportation Enhancement Grants Advisory Committee.

Historical and Cultural Museum Assistance Program

Since 1990, the MHT Museum Assistance Program has served the state's nearly 200 historical and cultural museums by providing grants, technical assistance and networking opportunities. These institutions engage visitors through a variety of programs and activities, such as visiting the homes of four signers of the Declaration of Independence, riding in an open-air trolley car or browsing newspaper ads seeking runaway slaves. Through museums, heritage tourists and local residents experience authentic connections to the state's rich and complex heritage.

In the course of developing *Preserve Maryland*, the state's five-year preservation plan, MHT recognized the need to re-evaluate the program's offerings, based on the museum community's current needs and the cessation of grant funding in 2011. In 2014, MHT

completed a formal needs assessment to answer the following questions:

- What is the constituency of the Museum Assistance Program?
- What are the needs of that constituency?
- What programs will best serve that constituency?
- How should the Museum Assistance Program relate to other programs offered?

The needs assessment process opened with a statewide survey, followed by focus groups that brought together museum representatives to review the survey's findings and to offer perspectives on future programming. Partner interviews helped to ensure that future program offerings would complement those provided by other state agencies and state-wide organizations. Recommendations for the future Museum Assistance Program, which are described more fully in the report, include:

- Solidify partnerships with state agencies and state-wide organizations to serve museum needs
- Create “Best Practices” training opportunities through a variety of formats and venues
- Become a hub for technical assistance by providing information, advice and guidance
- Maintain current statistics on Maryland’s historical and cultural museums through an “annual census”
- Identify partners to initiate a biennial museum “summit” on museum challenges

Rehabilitation Tax Credits

The Sustainable Communities Tax Credit Program is one of the state’s most powerful economic development and community revitalization tools. Complemented by the Federal Rehabilitation Tax Credit Program, the state tax credit program assists in the preservation of historic resources by providing financial incentives to property owners. The programs are among the few financial incentive tools MHT is able to provide to encourage historic preservation capital activity by for-profit businesses and private individuals.



Oak Street Garage, at 2600 N. Howard Street, Baltimore, completed its tax credit supported rehabilitation in 2014.

In 2014, the Sustainable Communities Tax Credit was reauthorized and expanded to

include a 20% credit for small commercial projects that are below \$500,000 in total qualified expenses and are located in a designated Sustainable Community. This new program is intended to assist owners of small scale commercial properties with critical improvements and upgrades that restore the historic appearance of the property and contribute to community revitalization.

In 2014, the program's three staff received over 261 new project applications – residential and commercial, federal and state – while continuing to finalize certifications on projects from previous years.

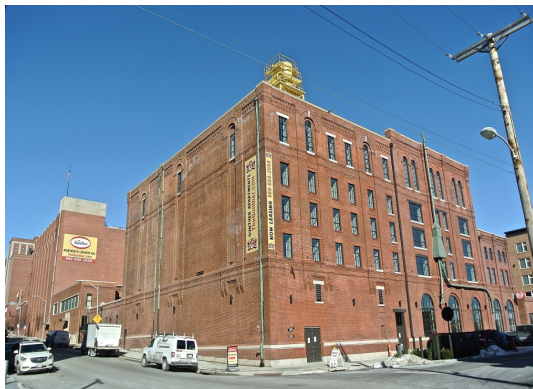
New applications reviewed by staff included 21 state commercial tax credit applications submitted for FY2015 funding. Of those, four projects were deemed to be deniable as not conforming to the Secretary of the Interior's Standards for Rehabilitation, or were otherwise not reviewable due to not being complete or not conforming to program requirements. The remaining 17 projects were deemed to be approvable as conforming to the Secretary of the Interior's Standards for Rehabilitation. These projects represent \$142,432,817 in proposed work and a total of \$23,973,418 in requested tax credits.

Project Name	Address	City	County	Description	Est. Project Costs	Credit	Credit Amount
Footer's Dye Works	2 Howard Street	Cumberland	Allegany	Conversion of an industrial factory to commercial restaurant and apartment use.	\$ 7,962,208.00	25%	\$1,990,552.00
Eastern Pumping Station/Baltimore Food Hub	1801 E. Oliver Street	Baltimore	Baltimore City	Conversion of former pumping station to a mixed use food center business incubator.	\$ 15,000,000.00	20%	\$3,000,000.00
Fells Point Recreation Pier	1715 Thames Street	Baltimore	Baltimore City	Conversion of the former municipal pier building for use as a hotel and restaurant facility.	\$ 39,851,734.00	20%	\$3,000,000.00
Florence Crittenton Home	3110 Crittenton Place	Baltimore	Baltimore City	Conversion of former mill owner's mansion/social services campus for use as rental apartments.	\$ 2,600,000.00	20%	\$520,000.00
Eastwick Motor Company/Load of Fun	120 W. North Avenue	Baltimore	Baltimore City	dealership for use an an arts organization center and restaurant.	\$ 6,100,000.00	20%	\$453,968.00****
Carrollton Hall	12290 Folly Quarter Road	Ellicott City	Howard	Restoration of the 1832 mansion house for use as community meeting space and museum.	\$ 3,902,400.00	20%	\$780,480.00
Taylor's Furniture Store	8197 Main Street	Ellicott City	Howard	Rehabilitation of a retail and residential building for use as restaurant and office space.	\$ 750,000.00	20%	\$150,000.00
Doughoregan Manor Work House	3483 Manor Lane	Ellicott City	Howard	Rehabilitation of a 1760's plantation building for use as rental residential housing.	\$ 300,000.00	20%	\$60,000.00
511 Poplar Street	511 Poplar Street	Cambridge	Dorchester	Rehabilitation of commercial building for retail and rental residential use.	\$ 225,000.00	20%	\$45,000.00
TOTAL					\$ 76,691,342		\$10,000,000.00

In addition to new applications, staff finalized certifications on projects awarded in past years. For 2014, the completed Part III certified state tax credit projects may be categorized as follows:

2014 Completed State Rehabilitation Tax Credit Projects					
	No. of Projects	Total Proposed Expenditure	Average Proposed Expenditure	Total Final Expenditure	Average Final Expenditure
Residential	120	\$6,889,068	\$57,408	\$4,888,695	\$40,739
Commercial	7	\$46,931,690	\$6,704,527	\$46,931,690	\$6,704,527

For the federal tax incentives, staff approved 69 certifications of significance (Part I), 64 proposed projects (Part II) and 21 completed projects (Part III).



Gunther Brewery at 1211 S. Conkling Street, Baltimore, completed its tax credit-supported rehabilitation in December 2013.

Grants and Loans

MHT provides funding for historic preservation activities through the following programs: the Historic Preservation Grant Program, the Historic Preservation Revolving Loan Program, and the Certified Local Government (CLG) Program. The Historic Preservation Grant and Loan Programs are funded through annual state appropriations, while the CLG Program is federally funded.

In addition, MHT administers the African American Heritage Preservation Grant Program in

partnership with the Maryland Commission on African American History and Culture.

Historic Preservation Grant Program

The Historic Preservation Grant Program is a state-appropriated source of funding to assist capital and non-capital heritage preservation-related projects. The grant fund's primary purpose is to provide financial assistance to local jurisdictions and nonprofit organizations for capital (bricks and mortar projects) and non-capital activities (architectural and archeological research, survey and documentation, public education, and planning projects). In 2014, this program was not funded and no grants were awarded.



421 E. Lafayette Street, Baltimore, completed its tax credit supported rehabilitation in 2014.

Historic Preservation Revolving Loan Fund

The Historic Preservation Revolving Loan Fund offers low-interest loans to nonprofit organizations, local jurisdictions, businesses and individuals to acquire, rehabilitate or restore historic structures listed or eligible for listing in the Maryland Register of Historic Properties. Loans are made on a first-come, first-served basis and carry a maximum repayment term of 20 years. The loan fund is replenished by repayments and by appropriations from the Maryland General Assembly. In 2014, no loans were approved; however, MHT staff review applications throughout the year and work with applicants until loans are able to be approved.

Certified Local Government (CLG) Grants

The CLG program recognizes counties and municipalities that have made a special commitment to preservation. This commitment includes, but is not limited to, establishing a qualified historic preservation commission to designate and review historic properties.

Maryland's CLG program is administered by the National Park Service and MHT. CLG programs exist in every state and are supported through the federal Historic Preservation Fund. MHT awards 10 percent of its annual allocation from the Historic Preservation Fund to CLG projects and educational opportunities each year. CLG grant projects supported in federal fiscal year (FFY) 2013 included:

FFY 2013 CLG SUBGRANTS		
SUBGRANTEE/BY COUNTY	SUBGRANT PROJECT	AWARD
Allegany County		
City of Cumberland	Design Guidelines and Historic Context Updates Update the local historic district design guidelines for Cumberland, as well as the historic context for the Canal Place Preservation District. This update will help property owners and assist the Historic Preservation Commission in reviewing proposed changes within the districts.	\$17,304
Charles County		
Charles County	Archeological Contract Services Part II Supplement planning staff with a professional archeologist who can undertake development	\$25,000

FFY 2013 CLG SUBGRANTS		
	review in accordance with the Charles County Subdivision Code and Zoning Ordinance.	
Calvert County		
Calvert County	Watermen's History in Calvert County Complete a web-based project covering the history of the communities in and in the immediate vicinity of Solomons, Maryland, focused on water trades and fisheries and the lives of the people that worked in those industries. The products will be available on the Calvert County website and will include video, maps linking the different segments to geography, and oral histories collected by the Calvert Marine Museum in the early 1980s.	\$7,288
St. Mary's County		
St. Mary's County	Archeological Contract Services Develop a pilot program focused on identification, documentation, and assessment of archeological resources in the county. This project will include recommendations for future steps to survey and develop sensitivity models, along with two public events to raise awareness about archeology in the county.	\$12,853
Statewide		
Maryland Association of Historic District Commissions	CLG Education and Training Grants	\$17,334
	Total	\$79,779

African American Heritage Preservation Grant Program

The African American Heritage Preservation Grant Program is administered by MHT in partnership with the Maryland Commission on African American History and Culture (MCAAHC), a unit of the Governor's Office of Community Initiatives. The program's purpose is to encourage the identification and preservation of buildings, sites, and communities of historical and cultural importance to the African American experience in Maryland.

Grant workshops led by MCAAHC and MHT staff were held in Turner Station and Lansdowne (Baltimore County), Westminster (Carroll County), Crownsville (Anne Arundel County), and Cambridge (Dorchester County) in March 2014. More than 90 people attended.

Thirty-four eligible applications for FY2016 funding, representing 15 counties and the City of Baltimore, were received by the deadline of July 15, 2014. The total funding request was approximately \$2,959,000; the majority of the funding requested was for rehabilitation, with the remainder for predevelopment or new construction costs. After review by MCAAHC and MHT's Board of Trustees, a list of projects recommended for funding was forwarded to Department of Budget and Management at the end of October for inclusion in the FY2015 capital budget.



AAHPP workshop attendees with representatives of MCAAHC and MHT at Union Baptist Church in Turner Station, Baltimore County.

Under the current statute, the AAHPP will sunset on May 31, 2015 unless it is reauthorized. MCAAHC and MHT will request reauthorization in the upcoming legislative session, and a bill has been submitted to DLS by MDP. Announcement of future grant rounds is pending.

FY 2015: AAHPP Grants

MHT and MCAAHC received 28 eligible applications for FY2015 funding by the deadline of July 15, 2013. The total funding request was approximately \$2,341,000; the majority of the funding requested was for rehabilitation, with the remainder for predevelopment costs. Applications represented 12 counties and the City of Baltimore. Awards included 14 projects for a total of \$1,000,000. The successful projects were:

County	Applicant	Project	Awarded
Anne Arundel	Town of Highland Beach	Highland Beach Town Hall: <i>Project work includes exterior and interior modifications and improvements, including installation of stairs and elevator; insulation; installation of or upgrades to electrical, plumbing, fire protection, fire suppression, security, and HVAC systems; modifications to walls, floors, ceilings, woodwork, and doors; and architectural and engineering services.</i>	\$46,000
Anne Arundel	West River Improvement Association, Inc.	Wilson Farmstead: <i>Project work includes interior and exterior rehabilitation, including repair / replacement of roof, siding, windows, doors, woodwork, and stairs; masonry repairs; structural repairs; pest control measures; installation of ventilation system; installation of gutters and downspouts; abatement of hazardous materials; site work; and architectural, engineering, and preservation consulting services.</i>	\$50,000
Baltimore City	The Church of St. Katherine of Alexandria	The Church of St. Katherine of Alexandria: <i>Project work includes structural repairs, shoring, masonry repairs, and repairs to window lintels.</i>	\$92,000

County	Applicant	Project	Awarded
Baltimore City	The Most Worshipful Prince Hall Grand Lodge, Free and Accepted Masons of Maryland and its Jurisdiction, Inc.	Prince Hall: <i>Project work includes interior and exterior rehabilitation, including scaffolding, carpentry repairs, flooring repairs, plaster repairs, painting, and repairs / upgrades to electrical and HVAC systems.</i>	\$95,000
Baltimore City	Union Baptist Church of Baltimore	Union Baptist Church: <i>Project work includes exterior rehabilitation, including roof repairs, masonry repairs, carpentry repairs, and repairs to gutters and downspouts.</i>	\$95,000
Baltimore County	St. Luke's United Methodist Church	St. Luke's Methodist Church Fellowship Hall: <i>Project work includes interior and exterior rehabilitation, including repairs to masonry, siding, woodwork, windows, doors, and roof; painting; insulation; creation of accessible restroom; upgrades to plumbing, electrical, and HVAC systems; installation of ramp; and architectural and engineering services.</i>	\$95,000
Calvert	Calvert County Division of Natural Resources	Kings Landing Park / Camp Mohawk: <i>Project work includes exterior rehabilitation of the cabins, including roof repair, carpentry repair, and painting.</i>	\$15,000

County	Applicant	Project	Awarded
Dorchester	The Friends of Stanley Institute, Inc.	Christ Rock M.E. Church: <i>Project work includes reconstruction of outbuildings, including foundations, framing, carpentry, windows, doors, fixtures, painting, utilities, commercial kitchen, and HVAC, electrical, fire protection, and plumbing systems.</i>	\$95,000
Kent	Asbury United Methodist Church	Asbury United Methodist Church: <i>Project work includes exterior rehabilitation, including structural repairs; repairs / replacement of foundation, ramp, roof, siding, and trim; masonry and carpentry repairs; site work; and architectural, engineering, and project management services.</i>	\$95,000
Kent	Janes United Methodist Church	Janes United Methodist Church: <i>Project work includes exterior rehabilitation, including roof replacement, scaffolding, carpentry repairs, and architectural, engineering, and project management services.</i>	\$95,000
Montgomery	Grand United Order of Odd Fellows, Sandy Spring Lodge #6430, Inc.	Sandy Spring Odd Fellows Lodge: <i>Project work includes interior rehabilitation, including installation of electrical and HVAC systems and carpentry work.</i>	\$50,000
Prince George's	Friends of Historic Mount Nebo Preservation Corporation	Mt. Nebo AME Church: <i>Project work includes exterior rehabilitation, including repairs to roof, structure, foundation, masonry, siding, doors, and windows.</i>	\$84,000

County	Applicant	Project	Awarded
Somerset	Oriole Historical Society, Inc.	St. James M.E. Church: <i>Interior and exterior rehabilitation, including repairs to masonry, plaster, flooring, windows, and woodwork, installation of HVAC, fire suppression, and electrical systems, construction of bathroom, and architectural, engineering, and consulting services.</i>	\$75,000
Washington	Friends of Tolson's Chapel	Tolson's Chapel: <i>Project work includes interior and exterior rehabilitation, including masonry repairs, painting, replacement of blackboards, repair and replication of shutters and shutter hardware, and architectural and engineering services.</i>	\$18,000
	14 Funded Projects	Total	\$1,000,000.00

National Park Service Hurricane Sandy Disaster Relief Assistance Grant Program

In 2013, MHT successfully applied for \$1.47 million of disaster relief funds administered by the National Park Service. These funds were among \$7.6 million awarded to eight East Coast states to help stabilize or repair historic properties damaged by Hurricane Sandy, as well as to conduct documentation, studies, surveys, archeology or planning activities, including projects assisting with disaster preparedness in areas where cultural resources were affected by Hurricane Sandy.

In early 2014, MHT issued a press release indicating the availability of sub-grants ranging from \$10,000 to \$150,000 per project for capital and non-capital projects related to the effects of Hurricane Sandy. Eligible applicants included state government agencies, local jurisdictions, nonprofit organizations, business organizations and individuals; no matching funds were required. Properties were required to be listed on or eligible for listing on the National Register of Historic Places, and capital projects required the conveyance of a preservation easement to MHT. MHT held workshops for potential applicants in Crisfield, Cumberland and Annapolis.

Sixteen eligible applications for funding were received by the deadline of May 2, 2014. The total funding request was \$1,627,489; the majority of the funding requested was for rehabilitation or pre-development costs, with the remainder for survey, archeology or cultural hazard mitigation activities. Applications represented eight individual jurisdictions; several projects had a statewide reach. After review and ranking by MHT staff, a list of projects proposed for funding was forwarded to NPS for concurrence. Award letters were sent to sub-grantees in mid-July 2014.

With Hurricane Sandy funding, MHT has hired a two-year contractor to develop a Cultural Resource Hazard Mitigation Program to assist local governments in planning and preparing for cultural resource impacts due to flooding and storm surge events.

NPS Hurricane Sandy Disaster Relief Assistance Grants/Capital Projects			
COUNTY	APPLICANT	PROJECT	AWARDED
Allegany	Canal Place Preservation and Development Authority	Footer Dye Works: <i>Scope of work: repairs to roof.</i>	\$150,000
Anne Arundel	BHL, LLC	Baltimore Harbor Lighthouse (Baltimore Light Station): <i>Scope of work: replacement of windows and doors; repair / replacement of roof; replace solar panel.</i>	\$66,000
Anne Arundel	Charles Carroll House of Annapolis, Inc.	Charles Carroll House: <i>Scope of work: Structural engineering reports; treatment and preservation plan.</i>	\$52,000
Frederick	Maryland School for the Deaf	Hessian Barracks: <i>Scope of work: Archeological resource study; structural engineering study; archeological conservation measures; and structural and plaster repairs.</i>	\$128,250
Somerset	John Wesley Community Association, Inc.	John Wesley Church: <i>Scope of work: Historic structure report / conditions assessment / recommendations for repair</i>	\$35,000

		<i>for church and cemetery.</i>	
Somerset	Debra Sorenson	Dr. Sarah Peyton House: <i>Scope of work: architectural and engineering services; electrical, plumbing, HVAC repairs including relocating furnace from outbuilding into main house; repair / replacement of foundation; repairs to framing; repairs to flooring, porch flooring, steps, walls, and ceilings.</i>	\$60,000
Somerset	Crisfield Heritage Foundation	Millard Tawes Library: <i>Scope of work: repair / replace roof, sheathing, soffit, fascia, gutters, and downspouts; install attic ventilation; repair / replace exterior siding, trim, columns, and windows; repair / replace plaster and drywall; painting.</i>	\$148,000
		TOTAL	\$639,250.00

NPS Hurricane Sandy Disaster Relief Assistance Grants/Non-Capital Projects

COUNTY	APPLICANT	PROJECT	AWARDED
Anne Arundel	Anne Arundel County Trust for Preservation	Archeology - 5 sites: <i>Scope of work: emergency excavation, recovery, and documentation of threatened / actively eroding archeological sites</i>	\$100,000.00
Somerset	Somerset County Historical Trust	City of Crisfield, Smith Island, and "Down the Neck" survey / historic district nominations: <i>Scope of work: hire consultant to re-evaluate Crisfield NRHD (boundary expansion anticipated) and to survey and nominate Smith Island and "Down the</i>	\$70,000.00

		<i>Neck" districts.</i>	
statewide	Maryland Department of Natural Resources	Department of Natural Resources - Historic Sites Survey: <i>Scope of work: hire a consultant or contractual employee for survey and documentation of historic structures in state parks, including preparation of MIHP forms and determinations of eligibility.</i>	\$100,000
		TOTAL	\$270,000.00

Public Outreach

A primary objective of MHT is to reach out to preservation professionals, local governments, nonprofit organizations and the general public to help them understand and appreciate the tangible remains of Maryland’s past. MHT accomplishes this through the many public programs at Jefferson Patterson Park and Museum, administration of the Historic Markers Program, support of the Annual Preservation Awards event, maintaining a website and the MHT library and archive.

Jefferson Patterson Park and Museum (JPPM)

Jefferson Patterson Park and Museum connects people to the past through history and archeology and supports the preservation of Maryland’s cultural resources. Located on 560 acres on the Patuxent River in Calvert County, JPPM encompasses approximately 70 documented archeological sites spanning 9,500 years. With events, tours, lectures, summer camps, and workshops, JPPM hosts more than 100 programs and 60,000 visitors each year.

In early June, JPPM celebrated Children's Day on the Farm with an attendance of more than 3,500 people. The following weekend, several elected officials from around the region joined Senator Bernie Fowler and about 150 visitors for the 27th annual Patuxent River Wade In.

The highlight of the 2014 season took place in late June when JPPM celebrated the Bicentennial of the Battles of St. Leonard Creek at its annual 1812 Fair and Re-enactment.



1812 Fair and Re-enactment at JPPM Courtesy Ralph Eshelman

More than 5,000 people enjoyed and participated in a wide-range of activities focusing both on the Chesapeake Campaign during the War of 1812 and civilian life in the early 19th century. In addition to military reenactments, the event featured demonstrations of blacksmithing, spinning and weaving, and lace making. Entertainment included period music, dancing, an equilibrist, and living history performances. Staff members provided opportunities for children to engage in hands-on activities such as doll making, quilting, knot tying, and quill and ink writing. Later that evening, JPPM hosted *Tavern Night*, featuring food, "high spirits," games, songs and lively entertainment – all in an 1800s tavern atmosphere. The evening's activities concluded with a fireworks display to commemorate the special anniversary. The event's second day featured a full-scale re-enactment with tall ships on the Patuxent.

JPPM continued to forge a strong relationship with the Calvert County school system. Every fourth grader in the county's public schools visited the park as part of our *Kids' Work* program exploring the lives of African American children in Southern Maryland post bellum. JPPM also hosted every sixth grader in the county's school system for a program focusing on archeology. More than 2,500 students visited the park as part of these two programs.



1812 Fair and Re-enactment at JPPM Courtesy
Ralph Eshelman

With assistance from JPPM staff members, Huntingtown High School's *Introduction to Archaeology* class analyzed the contents of a mid-19th century privy from Baltimore's Federal Reserve site, prepared an exhibit, and designed several posters. In addition, the JPPM education department worked with students from Mill Creek Middle School in Lusby to produce three short videos on 1812-related themes.

Other JPPM highlights for 2014:

The park kicked off the visitation season in April by celebrating the sixth annual Discovering Archaeology Day. A crowd of about 350 people enjoyed hands-on activities and displays brought to the park by archeologists from throughout Maryland.

In an attempt to offer rich learning experiences for some of our community's youngest members, JPPM revamped its Discovery Room in the Visitor Center and began to offer pre-K programming.

Every Monday throughout 2014, JPPM Curator Betty Seifert and a team of docents offered "Monday Memories" tours of the Patterson House and Grounds. In May, 300 people visited the home as part of the Maryland House and Garden Pilgrimage.

- In the spring, artist Craig Colorusso placed his solar-powered outdoor art installation, *Sun Boxes*, in the fields overlooking the Patuxent River as part of JPPM’s Art in the Park program.
- JPPM hosted six weeks of summer camps. The education staff offered two weeks of *Native Skills* camp, complete with shelter building and lots of cooking over the fire. *Dirt Alert* gave campers the chance to get messy and enjoy the wonders of nature. *Hands-On History* allowed kids to experience life before electricity and video games, while *Archaeology Explorers* gave campers the experience of participating in a real archeological dig. Finally, “*Imagine If...*” gave preschoolers the opportunity to go on a pirate’s treasure hunt, become a farmer, and fly like a bird.

On a cold and rainy day in early November, 180 hearty souls attended the park’s final event of the season, American Indian Heritage Day.

In December, JPPM learned that readers of Bay Weekly selected the 1812 Fair and Re-enactment as the Chesapeake region’s Best Living History Program for 2014. This was especially meaningful because 2014 marked just the third year since JPPM had changed the event to include more living history elements.



1812 Fair and Re-enactment at JPPM Courtesy Ralph Eshelman

Historical Marker Program

MHT administers the Maryland Roadside Historical Marker Program, which commemorates people, events, and places of special significance to the state through the erection of roadside markers. Staff reviews marker proposals to ensure the accuracy of the information and the statewide significance of the resources to be commemorated. The Maryland State Highway Administration funds and installs new and replacement markers, and repairs markers that have fallen victim to weathering, accidents, and vandalism.

In 2014, 11 new and four replacement markers were ordered; eight were installed. Markers were ordered to commemorate:

- Annapolis and Elk Ridge Railroad, which began service in 1840 between Annapolis and the Washington Branch of the B&O Railroad and was a key route for travel to and from the capital;
- Berkley Crossroads, settled in the late 18th century by free blacks and whites and home of Harford County's first public school for African Americans;
- Croom, patented in 1671 and home of Thomas John Claggett, the first Episcopal Bishop of Maryland; BG LEONARD COVINGTON, War of 1812 hero born in Aquasco, served in the Maryland Senate and US House of Representatives and mortally wounded at the Battle of Chrysler's Farm, Ontario;
- Women's Suffrage, in honor of "The Army of the Hudson," a group of women who stopped in Overlea as they marched from New York City to Washington in 1913 to join the parade of 8,000 bringing national attention to voting rights for women;
- Thomas Sprigg Wootton, a Rockville resident, member of Maryland's first Constitutional Congress and first speaker of the Maryland House of Delegates, who introduced a bill to divide Frederick



On August 20, 2014, the Brigadier General Leonard Covington marker was unveiled in Aquasco. From left: President of the Maryland Senate Mike Miller, Prince George's County Executive Rushern L. Baker III, MHT staff Nancy Kurtz, President of the Ella Virginia Houck Holloway Chapter of the Daughters of the War of 1812 Connie Uy, and historian Ralph Eshelman.

County into three jurisdictions, creating Washington and Montgomery counties;

- Henryton Center, opened in 1923 in Mariottsville as Maryland's first tuberculosis sanatorium for African Americans and in 1963 became Henryton State Hospital Center, serving developmentally disabled adults;
- Woodville School, constructed in 1934 to serve Aquasco area African-American children, with labor furnished by the Federal Emergency Relief Administration;
- Pumphrey Elementary School, completed in Anne Arundel County in 1923 under the Rosenwald Program, which was instrumental in the education of African Americans throughout the south in the early twentieth century;
- Ridgely, a farming community established in Prince George's County after the Civil War by former slaves from local tobacco plantations; and
- Seneca Schoolhouse, built of red sandstone from the Seneca quarries by the community from subscriptions canvassed in 1865 on land donated by Upton Darby.
- Replacement markers were ordered for Keechland and Cedar Point in Charles County, Site Of Stagwell in Queen Anne's County, and White's Ferry in Montgomery County.



A marker to commemorate the Pumphrey Elementary School was unveiled on November 29, 2014 by Boy Scouts, former students Wesley Booze and Moses Lattimore, former Anne Arundel County Executive John Leopold, and sponsor Ramocille Johnson.

Annual Preservation Awards

MHT recognized 10 outstanding preservationists and preservation projects in eight categories during the 38th Annual Maryland Preservation Awards ceremony in Annapolis which took place in January 2014.

The Calvert Prize is presented to an individual, organization, agency or institution for paramount leadership in or contributions to the preservation



The Rita R. Church Community Center won a 2014 award for Project Excellence.

of Maryland’s architectural and cultural heritage at the statewide level.

Educational Excellence Awards recognize projects that educate the public about any aspect of Maryland's heritage.

The Stewardship of Historic Properties by a Government Agency Award is presented annually to a municipal, county, State, or Federal government or an agency thereof in recognition of a demonstrated commitment to preserve historically significant buildings, sites, structures, and objects under their ownership or direct care.

Preservation Partnerships Awards are presented annually to individuals, organizations, agencies, or institutions in recognition of meaningful collaborations, partnerships, and relationships developed between governments, nonprofit organizations, and/or the private sector during the course of a project’s planning, development, and/or execution.

Project Excellence Awards recognize exemplary restoration, rehabilitation or adaptive reuse projects.

2014 Maryland Preservation Awards			
Category	Nominee/Project	Summary	County
Outstanding Stewardship of an Easement Property	Trustees and Staff of Ladew Topiary Gardens	Ladew Topiary Gardens, a Maryland landmark, is recognized as one of the best gardens of its kind and a unique house/garden combination. The Board of Trustees and staff have acted as exceptional stewards in its 44 year history	Harford
Individual Leadership	Mrs. (Howard) Gale Yerges	In thirty-plus years the leadership of Ms. Yerges leadership has inspired many to devote their time to address preservation issues and projects in Somerset County.	Somerset

2014 Maryland Preservation Awards			
Category	Nominee/Project	Summary	County
Individual Leadership	Sharon Kennedy	Ms. Kennedy has served on the Annapolis Historic Preservation Commission and under her leadership numerous projects have been preserved and accomplished.	Anne Arundel
Excellence in Community Engagement	Heart of the Civil War Heritage Area	The Heart of the Civil War Heritage Area catalyzed and coordinated the efforts of numerous partners to commemorate the 150th Anniversary of the Maryland Campaign in 2012.	Frederick
Excellence in Education	Huntingtown High School Historic Investigations	Huntington High School has consistently demonstrated a commitment not limited to education, but also to preservation of the past through its class offerings. The school has developed a class called Historical Investigations that merits an award.	Calvert

2014 Maryland Preservation Awards			
Category	Nominee/Project	Summary	County
Education & Community Engagement	Seas, Lakes & Bay: The Naval War of 1812 Exhibit at the U.S. Naval Academy	The project includes an educational exhibit, walking tour, exhibit catalog and website that are tools for educators, historians and the general public to directly experience sites, artifacts, and artwork to tell the story of the War of 1812.	Anne Arundel
Excellence in Media and Publications	Catoctin Center for Regional Studies, Frederick Community College/"Crossroads of War" Website	The website explores the history of the Civil War era in mid-Maryland and adjacent regions, helping visitors to learn about the war and its impact on the region using various interactive tools and methods.	Frederick

2014 Maryland Preservation Awards			
Category	Nominee/Project	Summary	County
Preservation Partnerships	2013 Archeological Field Session	William and Barbara Crum allowed archeologists to conduct important digs on a portion of his property. Collected artifacts were returned to Frederick County and used to educate the citizens history of where they lived. Additionally, they hosted the 2013 Field Session in MD Archeology.	Frederick
Excellence in Commercial/Institutional Rehabilitation	Rita R. Church Community Center	The rehabilitation of the Rita R. Church Community Center, a former pool house, is an important structure in Baltimore City and an integral part / resource in the Clifton Park Community.	Baltimore City
Excellence in Commercial/Institutional Rehabilitation	Adaptive Re-Use of the former U.S. Post Office into the Rockville Police Headquarters	Renovations and additions to the historic structure converted the former Rockville post office for the new Rockville Police headquarters. A number of sustainable/green initiatives were implemented in the project.	Montgomery

MHT Library and Website

The Archives and Library of the Maryland Historical Trust is the state's principal repository for information about Maryland's architectural, archeological and cultural resources. Included in the archives is the survey documentation for historic properties and archeological sites listed in the Maryland Inventory of Historic Properties, a broad-based catalog of information on districts, sites, buildings, structures and objects of known or potential value to the prehistory, history, upland and underwater archeology, architecture, engineering and culture of the State of Maryland. The inventory consists of two parts: standing structures/non-archeological sites and archeological sites, and information about any inventory properties that are included in the National Register of Historic Places can be found in the library.

By the close of 2014, 9,000 items had been entered into MHT's online library catalog. These items included books; site-specific reports related to architectural and archeology, most of which came through the Section 106 process; architectural drawings; historic structure reports; and video and audio cassettes. The library also houses a journal collection, transcripts and recordings that are part of an oral history collection, copies of historic maps, miscellaneous photographs, over 130,000 slides of architectural and archeological sites and vertical files.

A separate section of the library houses the Orlando Ridout V Collection, which contains approximately 200 books that the Trust received from his personal library upon his death. Mr. Ridout had been Chief of the Office of Research, Survey and Registration for many years, and the Trust welcomed this generous donation.

Work continued on a grant from Preserve America to provide internet access to the entire updated library of documentation contained in the Maryland Inventory, including National Register forms, determinations of eligibility, and inventory form text, photos and maps. Work was completed for the scanning of all new and updated library material. In the coming year, staff plans to convert to a new system for accepting digital materials directly into the library and restructure and redesign the internal MEDUSA database system for the internet. This project will serve to directly educate the general public about the historic resources in their own communities. It will also create increased opportunity for Preserve America communities, historic preservation commissions, heritage areas, Main Streets and others to utilize historic property information to support their resource protection and heritage tourism development goals.





Maryland Historical Trust
Maryland Department of Planning
100 Community Place
Crownsville, MD 21032-2023
410-514-7600
www.planning.maryland.gov
www.MHT.maryland.gov

