

Fiscal Year

20
25

Maryland Department of Planning Annual Report

Value Our Shared Heritage
Shape Places Where All Have the Opportunity to Thrive
Inform Decisions for Sustainable Growth





A Message from Governor Wes Moore

I am pleased to present the Fiscal Year 2025 Annual Report for the Maryland Department of Planning, which reflects the Moore-Miller Administration's commitment to building a State government that works better for the people we serve.

This year, our state was up against a historic budget challenge, even as we faced a federal administration whose policies have made life harder for 6.5 million Marylanders.

Despite these headwinds, we moved in partnership to deliver results and secure the future of our state. One of the biggest steps we've taken this year at the Maryland Department of Planning is to shift from smart growth to sustainable growth. We're not just focused on where we grow, but how we grow and for whom we grow.

The Maryland Coordinated Permitting Review Council has been a critical part of that work. Over the past year, the new council has advanced a whole-of-government approach to streamlining and expediting permitting review for major infrastructure projects that create pathways to work, wages, and wealth for Marylanders.

We refuse to let red tape stand between our state and a growing economy. The Permitting Council is helping to connect Marylanders from where they live to where opportunity lies, increase access to affordable housing, protect the environment, and create a more prosperous future for all.

None of the progress we're seeing would be possible without the leadership of Department of Planning Secretary Rebecca Flora and her entire team. The State of Maryland is better because they raised their hands to serve.

Still, we know there is more to do. To meet this moment, we must continue to make Maryland safer, more affordable, and more competitive. That's our commitment to the people of our state. And together, we will leave no one behind.

Sincerely,

Wes Moore
Governor



A Message from the Secretary

MDP's vision for Maryland achieving economic prosperity took a big step forward this fiscal year when Governor Moore signed into law Maryland's new Sustainable Growth Policy and Planning Principles (Principles), approved by legislature in the 2025 session. The Principles establish a new framework for growth and development in Maryland, one that is balanced and focused on the state's top priorities including Land, Housing, Transportation, Economy, Equity, Resiliency, Place, and Ecology.

Through the Principles for Sustainable Growth, MDP is leveraging all three of its primary service areas – historic preservation, data and analysis, and land use planning, to foster the creation of thriving communities across the state. MDP's collaborative approach is demonstrated through our work with local jurisdictions where we hosted multiple working sessions in FY25, through collaboration with numerous state agencies that we work with directly on projects and programs, and through the 53 commissions and other appointments that include MDP as a member. Additionally, MDP connected with more than 7,000 people in Maryland and across the country through its hosting of specialized webinars, along with representation to the U.S. Census and as a partner in the 13 state Appalachian Regional Commission (ARC) where Governor Moore was voted in as States' co-chair in 2025. A gem within MDP is Jefferson Patterson Park and Museum (JPPM), which hosted more than 130,000 school children and members of the public in FY25 through its special programs and visitors that further supported the Calvert County local economy.

While MDP is the state's Planning agency, this core land use and growth policy function is the smallest portion of our budget and staffing. MDP also hosts the Maryland Historic Trust, delivering more than \$20M with its historic tax credit and \$5.9M in grant programs. The State Data and Analysis Center (SDAC) continued to provide extensive demographic and geospatial data and analysis to sister agencies and special initiatives in FY25 in support of Governor Moore's data driven administration. MD250, also hosted at MDP, signed up 22 counties and Baltimore City to collaboratively deliver MD250 activities in 2026. The Commission awarded 174 grants totaling \$758,000 in support of the MD250 project. Also, local 250 Commissions have launched in Baltimore City and every county with the exception of Montgomery. MDP's operations and external affairs team provide support to all of these varying service areas.

On behalf of our entire MDP team we are grateful for the opportunity to serve Marylanders as we all work together to shape a future for Maryland where all have the opportunity to thrive. Sincerely,

Rebecca L. Flora, AICP, LEED ND / BD+C
Secretary



Contents

A Message from Governor Wes Moore	2
A Message from the Secretary	3
Contents	4
Introduction.	5
Office of the Secretary	8
Planning Services	10
Research, Review & Policy.	15
Geospatial Data and Analysis.	18
Parcel Data & Mapping	21
State Data and Analysis Center	22
Maryland Historical Trust	24
Finance and Operations	26
External Affairs	27
Staff	30



Introduction

The Maryland Department of Planning (MDP) supports the state by providing technical assistance, program guidance, data analysis, and outreach to local governments. We assist state agency partners and provide timely data to the private and public sectors. Our work reflects the priorities and direction of the Moore-Miller administration, focusing on efficiency, flexibility, and collaboration with local jurisdictions to promote economic development and environmental stewardship.

MDP serves the state and local jurisdictions with 142 budgeted positions. The department is organized into five divisions: Planning Services, the State

Data and Analysis Center (SDAC), External Affairs, Finance and Operations, and the Maryland Historical Trust (MHT).

Through Planning Services, MDP completes more than 200 technical assistance projects for counties and municipalities every year. The department supports the review and drafting of dozens of comprehensive plans or ordinances for local governments. We also collect, analyze, and publish social, economic, and geographic information, and maintain digital maps of the state's 2.3 million parcels. These maps form the foundation for policy development and are used throughout the state by various agencies, decision makers, and stakeholders.

Planning Services

State Data and Analysis Center

External Affairs

Planning Best Practices

Research, Review, and Policy

Data Applications

Research & Analysis

Parcel Data & Mapping

Geospatial Data & Applications

Communications

Public Outreach

Government Affairs

MDP also ensures that proposed financial and nonfinancial assistance projects within Maryland are consistent with state and local laws, regulations, and guidelines.

The State Data and Analysis Center (SDAC) maintains more than 90 datasets, including population and household projections, school enrollment, median household income estimates, and statistics on business establishments and farms.

The Maryland Historical Trust (MHT) is dedicated to preserving and interpreting the legacy of Maryland's past and serves as Maryland's State Historic Preservation Office (SHPO). It provides direct assistance to a broad base of local, state, and federal stakeholders to identify, protect, and enhance historic and cultural resources. MHT administers a variety of historic preservation grant, loan, and tax credit programs. This includes the Historic Revitalization Tax Credit, which encourages private investment in the rehabilitation of both commercial and

residential historic properties. MHT also oversees the operation of the Jefferson Patterson Park and Museum (JPPM) in Calvert County, which includes the Maryland Archaeological Conservation (MAC) Laboratory.

The External Affairs division meets the growing need for the department to engage in the legislative process at all levels of government. Additionally, the division builds partnerships with non-governmental organizations to further the mission of MDP and facilitate our strategic goals. The Communications unit coordinates outreach to promote the department's initiatives and services. This work strengthens relationships and supports the administration's legislative and policy initiatives.

Finance and Operations provides administrative support for the department, including MDP's budget, financial matters, information technology, procurement, logistics, and human resources.

Secretary

al

Finance and
Operations

Maryland
Historical Trust

Communications

Relations &
Public Affair

Management

Management
Information
Systems

Finance

Human
Resources

Grant, Loan, Tax
Credit Programs

JPPM

MAC Lab

MDP works with Maryland's jurisdictions to enhance the built environment and improve communities. We work with communities to help shape a vision for their future that protects the natural environment. We view the cultural, historic, and natural resources of our communities as catalysts that strengthen economic and community development. We appreciate the diversity of Maryland's people and geography and recognize that successful solutions require balancing the concerns of various stakeholders. It is our responsibility to guide the efficient use of state resources across jurisdictional lines. We strive to provide customers with the best service and help each jurisdiction implement their vision consistent with respect for people and place.





Office of the Secretary

Sustainable Growth Initiatives

This year marked a historic transition in Maryland's approach to land-use, evolving from Smart Growth to a forward-looking framework for **Sustainable Growth**.

Milestone 1: Enactment of Sustainable Growth Planning Principles On April 8, 2025, Governor Moore signed HB0286, establishing eight **Sustainable Growth Planning Principles**: Land, Transportation, Housing, Economy, Equity, Resilience, Place, and Ecology. These principles guide development to ensure it is equitable and resource-conscious.

Milestone 2: Release of the Sustainable Growth Implementation Guide MDP will release a non-regulatory guide featuring analysis, a metrics dashboard, a case example library, and a resource list to support implementation in FY26.

Milestone 3: Launch of the Sustainable Growth Network Established in May 2025, this network connects planners and developers to discuss the practical application of the new Planning Principles.

Milestone 4: The 2025 Sustainable Growth Awards The awards program was updated to reflect the new framework. Nominations must now demonstrate the incorporation of at least three **Sustainable Growth Planning Principle**

Maryland Coordinated Permitting Review Council

On December 19, 2024, Governor Moore issued Executive Order 01.01.2024.39, "Strengthening Maryland's Business Climate to Bolster Economic Competitiveness."

This directive is predicated on the principle that the State must proactively cultivate an environment conducive to business attraction, retention, and workforce development.

As Governor Moore emphasized, “state government plays a vital role in cultivating an environment that is conducive to the successful attraction, retention, and growth of businesses and workforce within the State.”

The Maryland Coordinated Permitting Review Council

Central to this economic strategy is the establishment of the Maryland Coordinated Permitting Review Council (the “Permitting Council”) under Section D of the Order.

The Council is charged with facilitating interagency synergy to streamline the approval processes for priority infrastructure and place-based projects. By fostering transparency and predictability, the Council aims to accelerate economic growth while maintaining the State’s rigorous standards for public health and safety

The Pilot Initiative and Digital Modernization

To operationalize these objectives, the Council has launched a Pilot Initiative to identify and advance a select portfolio of high-impact projects. This initiative serves as a testing ground for broader systemic reforms. A key component of this effort is the development of a centralized online permitting application, designed to replace fragmented legacy systems with a unified, trackable interface.

By implementing coordinated project plans, the Council will expedite permitting timelines and identify long-term improvements to the State’s regulatory framework. These advancements ensure that Maryland’s administrative processes for high-priority projects are as innovative and efficient as the industries they support.

Accountability and Stakeholder Engagement

The Maryland Department of Planning remains committed to the Council’s mandate of transparency. To ensure public and stakeholder oversight, the Permitting Council webpage provides comprehensive access to:

- Meeting agendas, official recordings, and supplemental materials.
- Biannual progress reports submitted to Governor Moore detailing milestones and performance metrics.
- Updates regarding the status of Pilot Initiative projects and technological integrations.

Through these structural reforms, Maryland is harmonizing its land-use planning with its economic development goals. By modernizing the permitting landscape, the State ensures that priority investments transition from concept to completion with greater efficiency, reinforcing Maryland’s position as a premier destination for global business and innovation.





Planning Services

The Planning Services Division is the core of the agency's planning-related functions. The division is organized into two units: Planning Best Practices and Research, Review, and Policy.

Planning Best Practices

Comprehensive Plan Review and Policy Guidance

In FY25, Planning Best Practices helped Maryland jurisdictions implement state planning laws and access state incentive programs and place-based designations. Regional planning staff completed reviews of 20 local comprehensive plans and amendments in FY25. In addition, staff reviewed 31 municipal annexations and 63 county water and sewer plan amendments.

The core function of Planning Best Practices is to partner with local jurisdictions to help them navigate regulations and best practices. We connect them to resources that advance local planning and community development objectives. Some examples of local partnerships in FY25 include:

- Facilitating a Priority Funding Area (PFA) certification with Calvert County and the Interagency Commission on School Construction (IAC).
- Aiding the Towns of Hancock and Williamsport in drafting Requests for Proposals (RFPs) for comprehensive plans.

- Coordinating feedback on Aberdeen’s Transit-Oriented Development (TOD) report and submitting comments on potential funding, missing information, and development opportunities.
- Researching resources for the resilient and economic development of Truman Point in the Town of Eagle Harbor, a historic African American beach community in Prince George’s County.
- Helping the Town of Betterton navigate competing development proposals (a solar farm and future town center) for a designated growth area.
- Aiding the Town of Delmar with the planning and coordination required to designate its first Sustainable Community.

Appalachian Regional Commission

The Appalachian Regional Commission (ARC) is an economic development partnership entity of the federal government represented by the Governors of each state. Governor Moore was elected to serve as States’ co-chair in calendar year 2025. The program is directed through

the Office of the Governor and managed by the MDP Secretary, who serves as the Governor’s alternate to the ARC. The program manager works out of MDP’s Western Maryland Regional Office with support staff. Staff work closely with the Tri-County Council for Western Maryland and Maryland’s Local Development District (LDD). The program manager and LDD meet regularly with applicants to ensure applications are complete, eligible, and consistent with state and ARC priorities.

Results from Targeted Investment Priorities for FY25

Economic Development: MDP staff addressed the unique challenges of the western Maryland region by leveraging investment for economic development.

FOREI Accelerator Initiative: Supporting Outdoor Recreation Business Growth and Regional Prosperity Frostburg State University established the Outdoor Recreation Economy Institute (FOREI) to use Western Maryland’s natural assets as catalysts for economic growth. Serving as a hub for workforce training, business development, and applied research, FOREI connects partners across Maryland,



ARC in Maryland

West Virginia, and Pennsylvania. Through training programs, paid internships, and the Outdoor Business Alliance, the project has expanded career pathways and supported entrepreneurs. With a total investment of \$1.42 million, FOREI has positioned Western Maryland as a leader in outdoor recreation.

Infrastructure: MDP staff focused on leveraging resources to improve infrastructure throughout the rural region.

Maryland Broadband Cooperative - Garrett & Allegany County Middle Mile Project This project will construct approximately 138,288 feet of fiber optic cable across Garrett and Allegany counties to address critical broadband gaps. The new network will deliver high-speed broadband, enhancing connectivity for businesses, schools, and public safety facilities. In Garrett County, the project links Grantsville to Keyser's Ridge, supporting a new e-commerce distribution center. In Allegany County, it extends from Grantsville to Frostburg and LaVale, improving access for schools and communities. The project also connects Maryland State Police Barracks to strengthen emergency response. With a total investment of \$1.41 million, including \$800,000 from ARC, the project will enhance economic competitiveness.

Recovery Ecosystem Clinical care, child care, access to employment, housing, and transportation are essential to empower those struggling with a disorder. Staff prioritize projects that help fill gaps in the recovery ecosystem.

Horizon Goodwill Grocery Store Initiative The Horizon Goodwill Grocery Initiative in Hagerstown addresses food

insecurity and workforce reentry. Located in a food desert, the store provides affordable groceries and job training for justice-involved individuals and those recovering from addiction. The facility also offers case work assistance and dental services. Supported by a total investment of \$956,000, the project strengthens workforce development and community infrastructure. It showcases how community-based solutions can drive lasting economic and social impact.

Education and Workforce Development: MDP staff prioritize projects that prepare students for 21st-century jobs, expanding partnerships among schools, colleges, and businesses.

Allegany College of Maryland - Western Maryland Works Maker Space Western Maryland Works is a regional workforce hub that equips individuals with skills in advanced manufacturing. With a total investment of \$3.82 million, the facility purchased CNC machines, welding systems, and 3D printers, expanding its annual training pipeline. It also established incubator units and integrated high school students through the P-TECH model. In its first year, 40 displaced workers were retrained, and nearly 1,000 credentials were earned. Graduates now earn between \$40,000 and \$90,000 annually.

Shaping and Empowering Leaders: ARC supports future community leaders through ARC's Academies and Institutes. Each year, we sponsor students to participate in STEM education, entrepreneurship, and research programs. We also sponsor participants in the Appalachian Leadership Institute. The institute provides comprehensive



MPCA and APA Maryland Conference: In FY25, staff helped organize the first combined MPCA/APA MD conference in Ellicott City. The event welcomed 306 attendees for three days of networking and collaboration. MDP staff participated in six sessions, including Secretary Rebecca L. Flora, who discussed the future of comprehensive planning.

Planning Commissioner Training Course (PCTC): Staff hosted two live PCTC sessions in FY25. In total, MDP issued 122 new certificates.

leadership training for local leaders. Fellows are empowered to take action to impact the future of Appalachia.

Education and Training

The Planning Best Practices Unit coordinates MDP’s education and training efforts locally and statewide. Staff educates planning board members through partnerships with the Maryland Planning Commissioners Association (MPCA) and the American Planning Association (APA), Maryland Chapter. Staff cultivate cooperative learning through MDP’s webinar program and by posting training and funding opportunities on the MDP website. The unit also bridges the gap between legislation and implementation, facilitates dialogue, and develops online resources.

New Initiatives

Affirmatively Furthering Fair Housing: MDP hired a Lead Housing Planner in FY25 to address the housing crisis. During the 2024 session, the General Assembly passed SB 274, requiring comprehensive plans adopted after January 1, 2025 to assess and affirmatively further fair housing. Staff expanded guidance to include self-assessments and community-specific recommendations.

Community Resilience: MDP hired a Lead Resilience Planner to address increasing threats from hazards. MDP staff developed guidance on incorporating resilience into comprehensive plans and contributed to the Resilient Maryland Strategy. MDP partners with state agencies to build a more resilient Maryland.

Webinar Program: Planning Best Practices organized 17 webinars in FY25 on topics such as housing, transportation, and renewable energy. The program peaked during Walktober with five webinars advocating for walkable communities.

Sustainable Growth Planning Principles and Regional Roundtables: MDP led eight technical advisory groups to develop guidance on the **Sustainable Growth Planning Principles**. In late FY25, MDP

organized a second regional roundtable program, convening planners and leaders across six regions. This facilitated dialogue on opportunities, threats, and actions to advance sustainable growth. The roundtables engaged 86 county and municipal representatives.



Research, Review & Policy

Policy Advocacy

The Research, Review and Policy (RRP) unit coordinates with Secretary Flora to advocate for land use planning and sustainable growth in state and regional decisions. In FY25, advocacy work involved the Chesapeake Bay Agreement Update, the Maryland Commission on Climate Change annual report, and MDP's Climate Implementation Plan. RRP staff also represented the Secretary on the Maryland Critical Area Commission and Maryland Agricultural Land Preservation Foundation.

MDP's Brownfield Redevelopment Program supports sustainable growth by advocating for cleanup and reuse. In FY25, MDP implemented an EPA assessment grant for the Baltimore region and hosted the fourth statewide brownfield conference.

Research and Analysis

The RRP Division provides research and analysis to support informed decision-making. Notable work in FY25 included updating *Maryland's Plan to Adapt to Saltwater Intrusion*, supporting the Maryland Coordinated Permitting Review Council, and updating the Maryland Protected Lands Dashboard. MDP also analyzed local plans to support the Southern Maryland Rapid Transit (SMRT) project. Additionally, MDP analyzed state programs to identify those most focused on compact, mixed-use development.

The unit develops planning guidance, including draft guidelines for local Land Preservation, Parks, and Recreation Plans (LPPRPs). RRP assisted with the Patuxent River Policy Plan and the Intergovernmental Review process. This process helps project leads avoid obstacles and aligns projects with Maryland's **Sustainable Growth Planning Principles**.

Review

RRP staff reviews projects and plans to support sustainable growth. This includes reviewing local water and sewer plans, energy projects, and comprehensive plans. The unit coordinates with the Maryland Department of Transportation (MDOT) to ensure projects align with **Sustainable Growth Planning Principles** and PFA requirements.

Major Project Reviews in FY25:

- Francis Scott Key Bridge Rebuild Project
- US-219 Project
- Bay Bridge Crossing
- Baltimore Redline
- SMRT - Planning and Environmental Linkages
- I-495 Southside Express Lanes Study
- I-95/I-495 at Medical Center Drive Interchange

MDP also reviewed local comprehensive plans, transit-oriented development (TOD) designations, and the Maryland Consolidated Transportation Program.

County and municipal comprehensive plans and transportation elements:

- Proposed or revised transit-oriented development (TOD) designations
- Draft FY25-FY30 Maryland Consolidated Transportation Program
- MDOT's FY24 PFA Spending Report
- Proposed Maryland Bikeways projects
- Draft 2025-2028 Transportation Improvement Program for the Baltimore Region
- Baltimore Region Transportation Needs Assessment proposals
- Zero Emission Vehicle Infrastructure Plan implementation
- Maryland Five-Year Human Services Transportation Plan

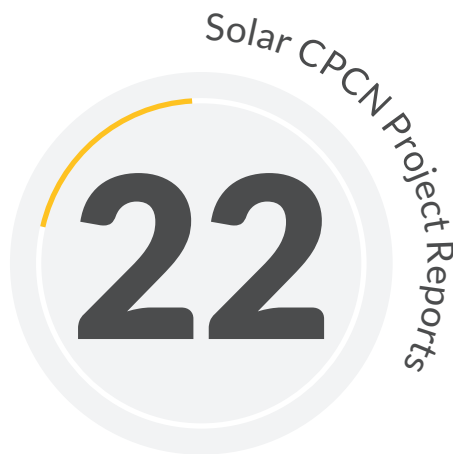
Interagency Commission for School Construction (IAC)

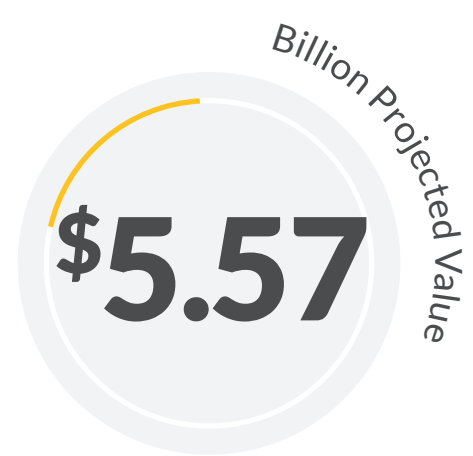
MDP supports the IAC, which oversees Maryland's investment in K-12 school facilities. Staff work with local planners to reconcile enrollment projections, which define needs in Educational Facilities Master Plans. MDP helps determine the PFA status of new schools. In FY25, MDP collaborated on data-driven applications to evaluate facility needs.

Interagency Coordination

Sustainable Growth Subcabinet: The SGSC met regularly in FY25 to identify collaboration opportunities. Staff reviewed 27 Sustainable Community renewal applications and provided comments on over 300 neighborhood revitalization grant applications.

Maryland Office of Resilience Support: MDP provided feedback to the Maryland Office of Resilience (MOR) on the state-level definition of resilience and the Resilient Maryland Strategy.







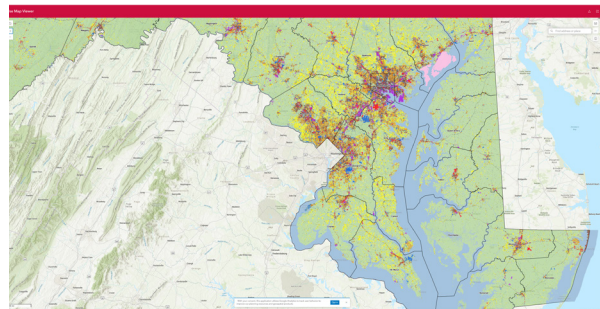
Geospatial Data and Analysis

The Geospatial Data and Analysis (GDA) unit uses analytical tools to provide timely data to decision makers. Please note that MDP reorganized at the end of FY25 to move all data and mapping services to SDAC for efficiency and alignment of skill areas

Data Production and Analysis

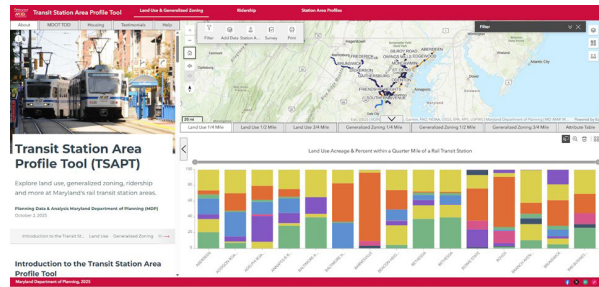
- **Statewide Land Use Map Update:** In November 2024, MDP published a map showing residential densities, commercial, and industrial uses. The product, including an ArcGIS StoryMap, land use statistics by county, land use map viewer, and data download, is available [here](#).

- **Protected Lands:** GDA aggregated local protected land data to update the Maryland Protected Lands Dashboard. [Statewide Local Protected Land Update Storymap](#). [Maryland Protected Lands Dashboard](#).
- **Municipal Annexations and Priority Funding Areas:** MDP continued mapping these layers for the Priority Funding Areas Map Viewer. [MDP's Priority Funding Areas Map Viewer](#).
- **Sewer Service Areas:** GDA updated data to reflect 30 amendments approved by MDE in FY25.
- **MALPF Updates:** GDA updated GIS data for new Maryland Agriculture Land Preservation Foundation (MALPF) easements.
- **Generalized Zoning:** MDP collected zoning data from all jurisdictions to update the statewide generalized zoning map.
- **Site Constraints:** MDP and the Maryland Environmental Service (MES) developed a scope of work to map environmental constraints like steep slopes and wetlands.



Web Applications

Transit Station Area Profile Tool (TSAPT): This tool encourages transit-oriented development by providing socio-economic and ridership data for rail station areas. The application is undergoing a database redesign to improve maintenance.



Transit-Oriented Development: GDA supports the “Transit-Oriented Development in Maryland” webpage. The “Transit-Oriented Development as a Redevelopment Tool” StoryMap showcases grant-funded projects and encourages affordable housing.

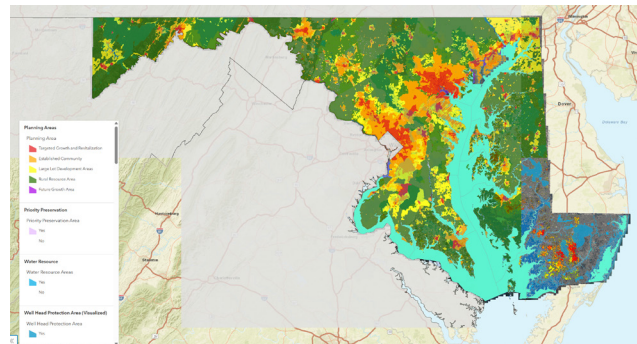
Transit-Oriented Development as a Redevelopment Tool

A map of Maryland Department of Housing and Community Development grant-funded projects

Maryland promotes TOD through a coordinated, multi-state agency approach
October 24, 2025

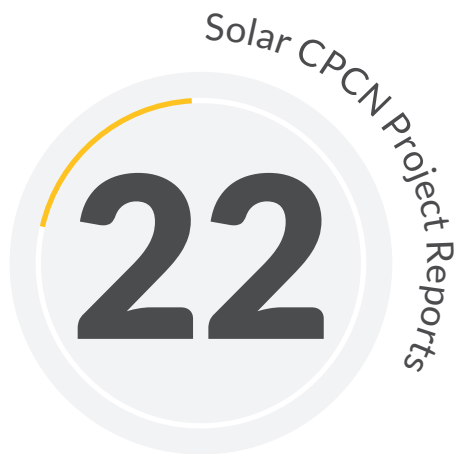
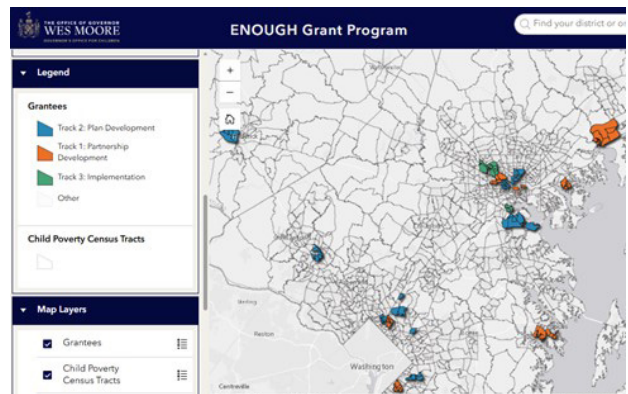
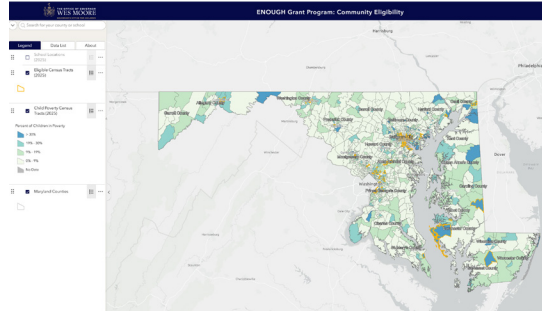


Targeted Growth and Conservation Areas: These areas identify locations for coordinated planning. The data is used by the Department of Budget and Management for capital budget proposals.



Technical Assistance

- **ENOUGH Act:** GDA analyzed school poverty data to determine grant eligibility and developed a web application for applicants.
- **Maryland Coordinated Permitting Review Council:** GDA formed the Tech Design Task Force to develop an online intake system and dashboard for project permits.
- **Bay Restoration Fund Analysis:** GDA analyzes the impact of wastewater treatment upgrades on growth patterns.
- **Rural Legacy Analysis:** GDA evaluated Rural Legacy funding applications using land stability metrics.
- **MDOT Assistance:** GDA provided zoning density analysis for the SMRT project and visualized residential development trends.



Parcel Data & Mapping

Statewide Parcel Data Management

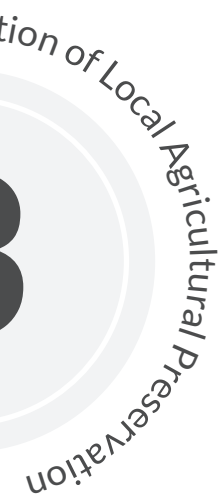
In FY25, GDA's Parcel Data & Mapping unit assembled parcel boundary files from local government sources with parcel boundaries maintained by MDP, then linked the files to property assessment data for use in online GIS applications

hosted by MDP and other state agencies. This data is also available as a free download from MDP's [website](#) as a statewide file or by individual counties and Baltimore City.

Tax Assessment Map Updates

The Parcel Data & Mapping unit performed updates and maintenance of the state's tax assessment maps, which are made available in paper or digital image format. They are also available as image and map

services on MD iMAP, the state's GIS data portal. In FY25, MDP produced updated tax assessment maps for Baltimore, Dorchester, Montgomery, Prince George's, Queen Anne's, and Wicomico counties.



State Data and Analysis Center

The State Data and Analysis Center (SDAC) conducts research, produces reports, and maintains demographic statistics.

Data Applications

Population and Household Projections: SDAC staff published preliminary projections for 2025 to 2055 and are developing projections for households and labor force.

Population Estimates: SDAC staff produced analyses based on Census Bureau data, including municipal population tables and demographic summaries .

School Enrollment Projections: The 2025-2034 report detailed projections by grade for all jurisdictions. The 2024 projections were within 0.3% of actual enrollment.

2030 Census: SDAC is preparing for the 2030 Census by developing a workplan. Staff began the Local Update of Census Addresses (LUCA) and the Block Boundary Suggestion Project (BBSP) to improve census accuracy .

Group Quarters Analysis: MDP updated its group quarters database to improve the accuracy of population estimates.

Housing Data: SDAC reports on building permits and residential sales, tracking trends in units sold and prices.

Dashboards: SDAC is transitioning from static tables to interactive dashboards. Completed dashboards include School Enrollment Projections and the Longevity Ready Maryland initiative.

Research

Demographic Analysis: In FY25, reports covered migration patterns and wealth disparities using IRS and Census data.

Longevity Ready Maryland (LRM) Dashboard: This dashboard visualizes data on Maryland's aging population to help shape policy. It includes over 70 visualizations drawn from more than 65 datasets.

Annual State Data Center Conference: The September 2024 conference hosted over 60 attendees and featured presentations on Census products and economic research.

Technical Assistance

Governor's Office for Children (GOC): SDAC developed a methodology to analyze the wealth of Maryland households by race and age using data from the Census Bureau's Survey of Income and Program Participation. Findings on disparities were shared with the GOC.

Additionally, SDAC staff reviewed the GOC's methodology for estimating child poverty at the census tract level and provided feedback to their analysts.

Performance Cabinets: Staff attended and participated in meetings with the performance cabinets for Child Poverty, Housing, Infrastructure, and the Economy. SDAC contributions included data and analytical assistance.

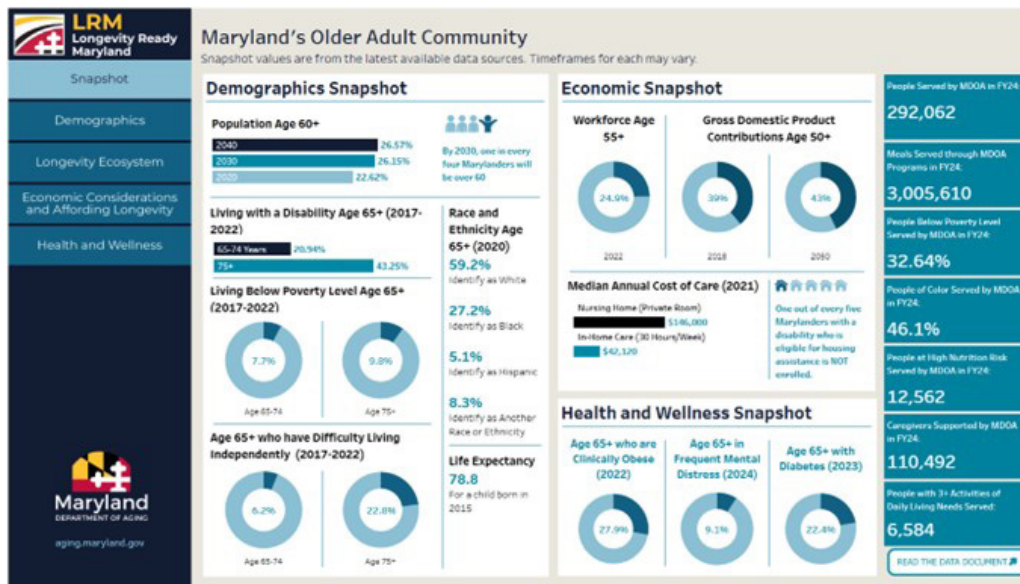
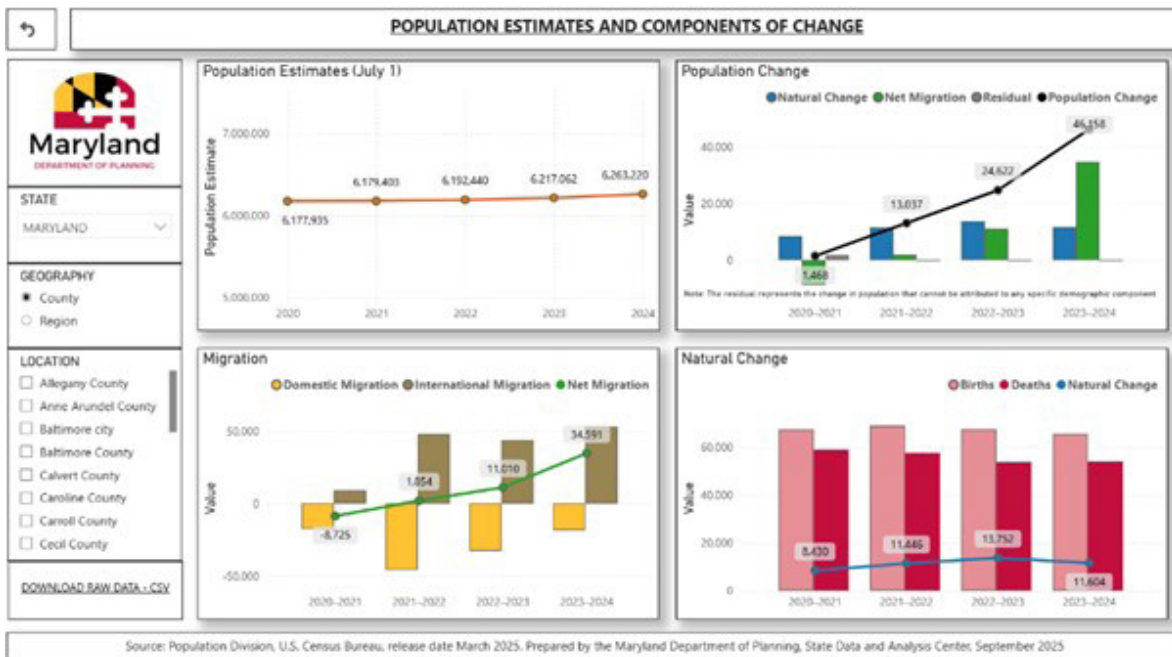
Performance Improvement Training Series: Staff attended the training series to help improve SDAC operations and performance.

Department of Legislative Services: During the 2025 legislative session, SDAC staff provided review and comments on several bills that would have an impact upon the work of MDP.

Department of Housing and Community Development (DHCD): SDAC staff reviewed the methodology for the

production of housing targets provided by DHCD in the Housing Development Act (HB0503). Comments were provided on the suggested approach and alternate data sources were proposed.

Redistricting Data and Mapping Assistance: SDAC provided customized legislative and detailed precinct boundary maps in response to requests from throughout the state.



Maryland Historical Trust

In FY25, MHT administered research, protection, and financial assistance programs to support preservation.

Research, Survey, & Registration

MHT maintains the Maryland Inventory of Historic Properties and Medusa, the state's cultural resource information system. In FY25, Medusa received 31,000 visits, and over 800 new reports were added. The MHT Library digitized all 14,810 Archaeology Site Forms.

Highlight: Historic Highway Bridges of Maryland, 1694 - 1965 This submission highlights engineering history, including

the Sykesville Bypass Bridge and the Pocomoke River and Snow Hill Drawbridges. The Sykesville bridge is Maryland's only aluminum bridge. The drawbridges reflect the shift from river to road transport.

Financial Incentives

Grants: MHT awarded \$745,905 to ten capital projects and \$300,000 to eight non-capital research projects. The Maryland Heritage Areas Program awarded over \$3.6 million, and the African American Heritage Preservation Program awarded \$5 million.

Success Story: Bethel Center (Garrett County) A historic African American church and community hub was restored and repurposed as the Bethel Center. Built in the 1890s, the building served as a church and school until the 1930s. The center now preserves this vital history.

Tax Credits: MHT awarded \$20 million in commercial tax credits, along with credits for small commercial and residential projects.

Success Story: Visitation Frederick (Frederick County) A historic 19th-century school complex was rehabilitated into a boutique hotel. The project preserved the historic chapel while adding a restaurant and community spaces.





Heritage2031 Update

MHT advanced the statewide preservation plan by documenting underrepresented histories, launching virtual roundtables, and contributing to the **Sustainable Growth Planning Principles**. MHT also revived the Museum Assistance Program.

Easements & Project Review

MHT manages preservation easements and reviews projects to mitigate harm to cultural resources. In FY25, MHT acquired five new easements and consulted on more than 5,830 projects, including the Francis Scott Key Bridge project.

Public Programs

MHT engages the public through the MHT Roadshow, Maryland Preservation Awards, and archaeology field sessions. The 2025 field session at Teague’s Point in Charles County uncovered a 17th-century domestic site.

Jefferson Patterson Park and Museum

JPPM connects people to the past through archaeology, history, and recreation. In FY25, the park advanced the MAC Lab expansion and hosted over 130,000 visitors. A major milestone was the official opening of the Patterson House & Gardens in May 2025 following a multi-year restoration.

Finance and Operations

The Internal Operations Unit supports the department with financial services, IT, logistics, and human resources.

The fiscal unit ensures compliance with fiscal laws. In FY24, the unit processed more than 250 purchase orders exceeding \$17 million and collected more than \$10 million in revenue.

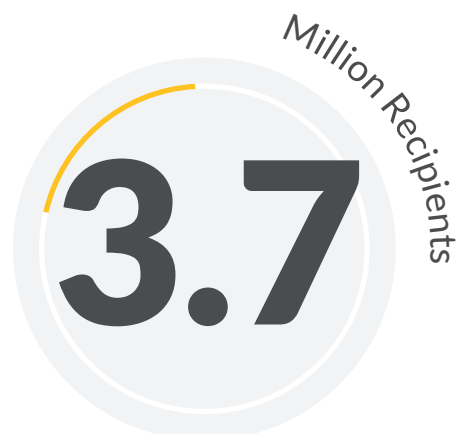
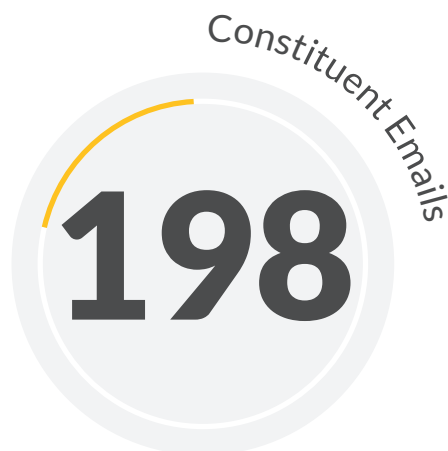
The Maryland State Retirement Agency audited payroll records and found the agency to be in compliance.

- All eligible employees were enrolled in the system
- No ineligible employees were enrolled
- Accurate payroll data was reported to the agency
- Accurate totals of unused sick leave balances were reported

The Information Technology (IT) unit provides technical support and cybersecurity. In FY25, the unit upgraded servers and migrated public payment processes to an online system to better protect sensitive data.

- E-106 Online Applications. Through the MHT e106 system, users provided requests for MHT review of state and federal projects by completing an online form and uploading required attachments.
- ECommerce - Upgraded and enhanced our online ECommerce presence.

The Operations unit focuses on customer service and employee relations. In FY25, the agency hired more than 20 new employees as part of an office reorganization.



External Affairs

External Affairs focuses on Communications and Government Affairs to strengthen relationships and advance the administration’s goals. It also serves as the point of contact for press inquiries, Public Information Act requests, and other interactions with external entities.

Communications

Communications supports the agency by highlighting the work of MDP throughout the state. It uses social media platforms, our three websites, and constituent subscriber-based email communication to provide information about initiatives and programs, including the department’s work on-the-ground, Sustainable Growth Awards, the Implementation Guide, and the Maryland Coordinated Permitting Review Council, among others.

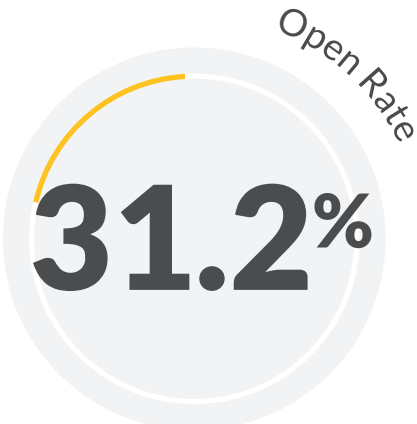
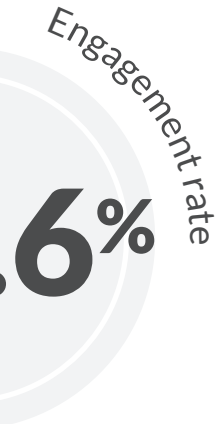
Through our publications, social media channels, Facebook, X (formerly Twitter), and LinkedIn, we promote the agency’s work, internal and external events, strategic and data-driven webinars, job

openings, and more. In FY25, MDP staff posted 927 messages, made 129,339 impressions, and attained 10,864 followers across all social media platforms.

We sent 198 constituent emails through our GovDelivery subscriber-based engagement system. These were sent to more than 3.7 million recipients and received an open rate of 31.2 percent. Our subscribers grew by almost 40,000 to a total of 247,122 subscriptions to end FY25.

Our website boasted 21,548 users in FY23 in 465,624 engaged website sessions. This resulted in 755,879 pages viewed and 9,946 files downloaded on Planning.Maryland.gov.

Communications processed and completed 13 Public Information Act requests over FY25. All requests complied with the 30-day requirement to complete requests. These satisfied requests involved 144 in total responsive records.



Government Affairs

Government Affairs strengthens relationships with elected officials and furthers legislative initiatives. In FY25, MDP revitalized the Sustainable Growth Subcabinet and passed legislation to improve efficiency. A key achievement was introducing the **Sustainable Growth Planning Principles** to guide state investment and local planning. The department submitted 24 pieces of testimony and tracked nearly 300 bills.

Sustainable Growth Initiatives

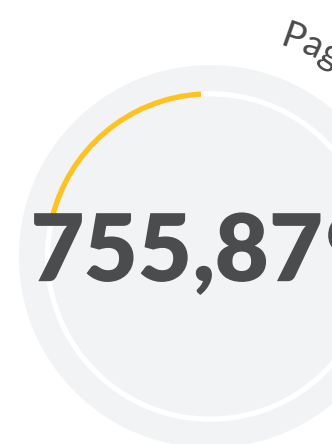
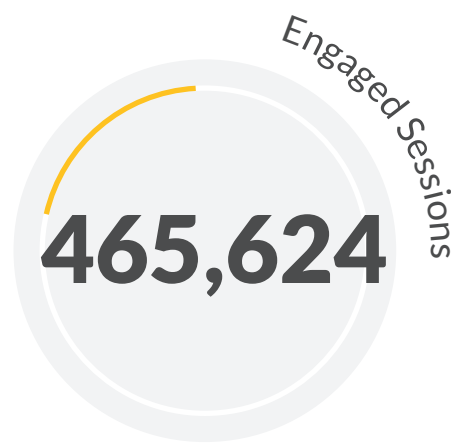
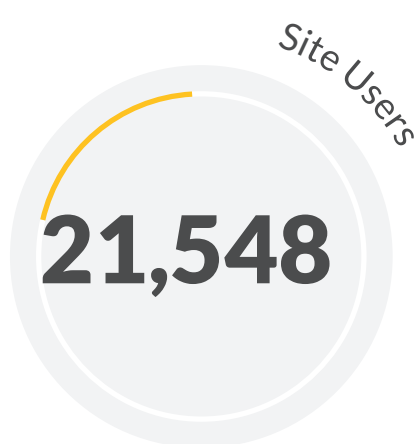
This year marked a historic transition in Maryland's approach to land-use, evolving from Smart Growth to a forward-looking framework for **Sustainable Growth**.

Milestone 1: Enactment of Sustainable Growth Planning Principles On April 8, 2025, Governor Moore signed HB0286, establishing eight **Sustainable Growth Planning Principles**: Land, Transportation, Housing, Economy, Equity, Resilience, Place, and Ecology. These principles guide development to ensure it is equitable and resource-conscious.

Milestone 2: Release of the Sustainable Growth Implementation Guide MDP will release a non-regulatory guide featuring analysis, a metrics dashboard, a case example library, and a resource list to support implementation in FY26.

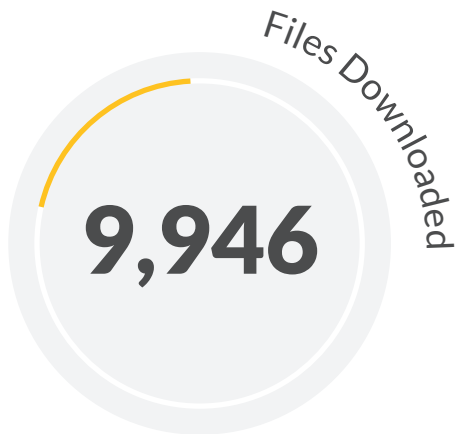
Milestone 3: Launch of the Sustainable Growth Network Established in May 2025, this network connects planners and developers to discuss the practical application of the new Planning Principles.

Milestone 4: The 2025 Sustainable Growth Awards The awards program was updated to reflect the new framework. Nominations must now demonstrate the incorporation of at least three **Sustainable Growth Planning Principles**.





Pages Viewed
9



13 PIA Requests
144 Responsive Records

MDP Staff

Office of the Secretary

Rebecca L. Flora, AICP, LEED ND / BD+C, Secretary

Kristin Fleckenstein, Deputy Secretary

Melanie Gross

Maggi Currier

Darius White

Internal Operations

Andrew Kelson, Chief

Finance

Nital Goswami, CFO

Cecilia Maposa

IT

Ted Cozmo, Director

Doug Lyford

Cassandra Malloy

Tiffany Nance

Barbara Wise

Greg Schuster

Marlon Castillo

Stella Olanipekun-Ajayi

Les Hodgson

Oumy Kande

External Affairs

David Buck, Director

Communications

Mary Daughton

Kristen Humphrey

Jessica Meyer

Government Affairs

Andrew Wilson

Planning Services

Chuck Boyd, Assistant Secretary

Planning Best Practices

Joe Griffiths, Director

David Cotton

David Dahlstrom

Clyde Drayton IV

Research, Review & Policy

Jason Dubow, Director

Deborah Herr Cornwell

Sylvia Mosser

Geospatial Data and Analysis

note this unit was moved under SDAC at the end of FY25

Joseph Brunt

Spatial Data

Ellen Mussman, Manager

Meagan Fairfield-Peak

Deborah Sward

Parcel Data and Mapping

Michelle Koenig

Korey Layman

Susan Llareus

Daniel Mullinix

Bihui Xu

Rita Pritchett

Sophia Richardson

Scott Hansen

Gary Marago, Manager

Oluwapelumi Aluko

Collin Bates

Kyle Byington

William Murphy

Brooks Phelps

Carter Reitman

Joseph Rogers

Christina James

Arianna Cacic

Barbara Ewell

Robert Maxwell

Tyler Shank

State Data and Analysis Center

Al Sundara, Assistant Secretary

Data Applications

Shawn Kimberly, Manager

Travis Beal

Research

Krishna Akundi, Manager

Souha Alioua

Dial Keju

Olusola Omisakin

Tyler Schlachter

James Newton

Maryland Historical Trust

Administration

Elizabeth Hughes, Director and State Historic Preservation Officer (SHPO)

Anne Raines Kathy Monday Jeanna Plants

Operations Management

Stella Olanipekun Traci Verzi Caitlin Swaim

Katrina Leavitt Sabrina Roundtree

Office of Planning, Education, and Outreach

Nell Ziehl, Chief Andrew Arvizu Martha Waldron

Preservation

Collin Ingraham, Chief Dixie Henry Stacy Montgomery

Ana Casso Bill Hersch Carolyn Nosacek

Jordan Cline Ariane Hofstedt Troy Nowak

Grace Davenport Katharine Jaffe Elizabeth Roman

Alan Gibson Carey Jones

Dana Halpert Matthew Migliozi

Brian Snyder Research, Survey and Registration

Marcia Miller, Chief Jennifer Cosham Stephanie Soder

Heather Barrett William Kiskowski Jacqueline Shin

Gregory Brown Mary Mansius Jessica French

Matthew Mcknight Lara Westwood Brooklyn Lindsey-Taylor

Jennifer Chadwick-Moore Zachary Singer Allison Luthern

Grants

Traci Verzi, Manager

Sabrina Roundtree

Caitlin Swaim

MD 250

Michele Johnson, Director Mary Galen Parys Wyatt

Erin Bode Angela Rush

Jefferson Patterson Park & Museum

Administration

Rod Cofield Eric Frere Sue Spindler

Operations

Lauren Canty Jessalyn Mehrkam

Facilities

Dimitrios Papadakis, Manager Stephen Embrey John Suthard

Heather Baden David Johnson Lemuel Thomas

Lindsay Hollister David Reifsnyder

Derek Mathieson Edward Scanlon

Marketing and Development

Bridget Rinker Samantha Boyd

Education

Elizabeth Brant Jeffrey Nikolaus

Candi Claggett Nathaniel Salzman

Visitor Services

John Mealey, Manager Jenna Leannarda

Rebecca Johnson Isabella Rodriguez

MAC Lab

Patricia Samford, Director

Nichole Doub

Scott Strickland

Alexandra Glass

Rebecca Morehouse

Sara Rivers Cofield

Maryland Department of Planning
120 East Baltimore Street, Suite 2000
Baltimore, MD 21201
Planning.Maryland.gov
(410) 767-4500 • (877) 767-6272

Publication Number: 2025-111 (MSAR #620)

December 2025

Wes Moore, Governor

Aruna Miller, Lt. Governor

Rebecca L. Flora, AICP, LEED ND / BD+C, Secretary

Kristin Fleckenstein, Deputy Secretary