



TESTING FOR LEAD IN DRINKING WATER FOR MARYLAND PUBLIC AND NONPUBLIC SCHOOLS

Reporting Period July 2, 2020, to July 1, 2021

Prepared for:

Larry Hogan, Governor
State of Maryland
and
the Maryland General Assembly



Maryland
Department of
the Environment

Ben Grumbles
Secretary



Karen B. Salmon
State Superintendent

Mohammed Choudhury
State Superintendent

Table of Contents

EXECUTIVE SUMMARY	1
BACKGROUND	3
UPDATES TO LEGISLATION	4
REGULATION IMPLEMENTATION	5
MARYLAND’S LEAD TESTING PROGRAM	7
Initial Testing Results for Public, Charter, and Nonpublic Schools	7
Testing Deferrals	9
Waivers	9
Successes	9
Challenges	10
Conclusion	11
References	12
APPENDICES	13
Appendix A: Glossary	
Appendix B: Flow Chart	
Appendix C: Table 1. Schools Conducted Lead Testing – Public Schools	
Table 2. Schools Conducted Lead Testing – Charter Schools	
Table 3. Schools Conducted Lead Testing – Nonpublic Schools	
Appendix D: Table 4. Lead Samples Collected – Public Schools	
Table 5. Lead Samples Collected – Charter Schools	
Table 6. Lead Samples Collected – Nonpublic Schools	
Appendix E: Table 7. Lead Samples Above Current Action Level of 5 ppb (Effective on	
June 1, 2021, and applied retroactively) and Below Previous Action	
Level of 20 ppb (through May 31, 2021) – Public Schools	
Table 8. Lead Samples Above Current Action Level of 5 ppb (Effective on	
June 1, 2021, and applied retroactively) and Below Previous Action	
Level of 20 ppb (through May 31, 2021) – Charter Schools	
Table 9. Lead Samples Above Current Action Level of 5 ppb (Effective on	
June 1, 2021, and applied retroactively) and Below Previous Action	
Level of 20 ppb (through May 31, 2021) – Nonpublic Schools	
Appendix F: Table 10. Lead Samples Above Previous Action Level of 20 ppb (through	
May 31, 2021) – Public Schools	
Table 11. Lead Samples Above Previous Action Level of 20 ppb (through	
May 31, 2021) – Charter Schools	
Table 12. Lead Samples Above Previous Action Level of 20 ppb (through	
May 31, 2021) – Nonpublic Schools	
Appendix G: Table 13. Waivers – Public, Charter, Nonpublic Schools	

- Appendix H:** Table 14. Schools Conducted Lead Testing – Previous Reporting Period Between July 2, 2019, and July 1, 2020
- Table 15. Lead Samples Above Current Action Level of 5 ppb (Effective on June 1, 2021, and applied retroactively) and Below Previous Action Level of 20 ppb (through May 31, 2021) – Previous Reporting Period Between July 2, 2019, and July 1, 2020
- Table 16. Lead Samples Above Previous Action Level of 20 ppb (through May 31, 2021) – Previous Reporting Period Between July 2, 2019, and July 1, 2020
- Appendix I:** Table 17. Schools Conducted Lead Testing – Previous Reporting Period Between July 2, 2018, and July 1, 2019
- Table 18. Lead Samples Above Current Action Level of 5 ppb (Effective on June 1, 2021, and applied retroactively) and Below Previous Action Level of 20 ppb (through May 31, 2021) – Previous Reporting Period Between July 2, 2018, and July 1, 2019
- Table 19. Lead Samples Above Previous Action Level of 20 ppb (through May 31, 2021) – Previous Reporting Period Between July 2, 2018, and July 1, 2019
- Appendix J:** Table 20. Schools Conducted Lead Testing – Previous Reporting Period Between July 2, 2017, and July 1, 2018
- Table 21. Lead Samples Above Previous Action Level of 20 ppb (through May 31, 2021) – Previous Reporting Period Between July 2, 2017, and July 1, 2018

EXECUTIVE SUMMARY

EXECUTIVE SUMMARY

During the 2017 legislative session, House Bill 270 (HB 270) passed and was signed into law by Governor Hogan, providing a framework to reduce Maryland school children's exposure to lead in drinking water. HB 270 directed the Maryland Department of the Environment (MDE), in consultation with the Maryland State Department of Education (MSDE), the Maryland Department of General Services (DGS), and the Maryland Occupational Safety and Health (MOSH), to adopt regulations to require periodic testing for the presence of lead in each drinking water outlet located in an occupied public or nonpublic school building. The law required MDE to establish a stakeholder group and to gather information about the testing processes, protocols, and efforts undertaken by schools to test for and remediate lead. The law also required MDE, in consultation with MSDE, to provide a mechanism to grant waivers from testing to schools under certain circumstances. Furthermore, on or before Dec. 1, 2018, and each year thereafter, MDE and MSDE must jointly report to the Governor and the Maryland General Assembly on the findings of the lead testing conducted by schools.

During the 2019 session, HB 1253 passed and was signed into law by Governor Hogan, which strengthened the lead protection measures established in HB 270 by setting a lead level of no more than 5 parts per billion (ppb) as a goal for schools to work toward. The law also provided a funding mechanism for schools to remediate drinking water outlets that exceeded this level, and expanded the information that must be reported to the Governor and the Maryland General Assembly.

During the 2021 session, HB 636 passed and was signed into law by Governor Hogan to further reinforce the lead protection measures established in both HB 270 and HB 1253 by altering the definition of an elevated level of lead from 20 to 5 ppb (effective June 1, 2021, and applied retroactively). This change significantly increased the number of drinking water outlets that were required to be removed from service immediately and remediated. In addition, the new law set a deadline of Aug. 1, 2022, for schools to complete remediation of drinking water outlets that had lead levels between 5 and 20 ppb if the samples were analyzed by a state-certified laboratory by June 1, 2021.

This report, which will be made available to Maryland citizens through MDE's website, details the reporting cycle ending July 1, 2021. During this reporting cycle (i.e., July 2, 2020 through July 1, 2021), schools that completed their initial testing during the initiative's first phase (i.e., July 2, 2017 through July 1, 2018) were scheduled to complete their testing in accordance with Maryland's 3-year cycle requirement. This report details Maryland's program for lead testing in the drinking water for public and nonpublic schools, and the progress made toward identifying and reducing exposure to lead through drinking water in schools. Additionally, this report summarizes activities for the period of July 2, 2020 through July 1, 2021. Schools that were required to conduct lead testing during this period include schools serving children in prekindergarten to grade 5, and/or school buildings built before 1988 that were not granted a deferral from initial lead testing.

Over 100 schools submitted results of lead samples collected during this reporting period (i.e., between July 2, 2020 and July 1, 2021). Of these schools, MDE was able to review results from 61 schools (13 public schools, nine charter schools, and 39 nonpublic schools). Review of the remaining schools' results is ongoing due to insufficient documentation and data validation. Over 1,500 samples collected from 59 schools (13 public schools, eight charter schools, and 38 nonpublic schools) were determined to be valid (i.e., were collected and analyzed in accordance with [Code of Maryland Regulations \(COMAR\) 26.16.07.07](#)). Of these 59 schools, there were one public school and eight nonpublic schools with lead results exceeding the lead Action Level (AL) of 20 ppb (through May 31, 2021); seven public schools, five charter schools, and 17 nonpublic schools had lead results exceeding the AL of 5 ppb (effective June 1, 2021). Approximately 6% of the samples collected from these 59 schools had lead results exceeding 20 ppb, and 13.9% of these samples had lead results exceeding 5 ppb. When outlets used for drinking, food preparation, or cooking are found to have elevated levels of lead in the water, immediate removal from service is required.

Maryland's goal is to eliminate any occurrence of elevated levels of lead in drinking water provided to approximately 1 million children by the nearly 3,000 public and nonpublic schools in the State. The significant reduction in the AL from 20 ppb to 5 ppb, coupled with continued testing and remediation, further reduces exposure to lead in drinking water and is an important step in achieving this goal.

BACKGROUND

BACKGROUND

This report summarizes the lead testing results of drinking water samples collected during the 2020-2021 school year at Maryland's public and nonpublic schools; it has been prepared for the Governor in accordance with Section 6-1502(E) of the Environment Article of the Annotated Code of Maryland.

[HB 270](#) was signed into law by Governor Hogan on May 4, 2017, and became effective on June 1, 2017. The law directed:

- MDE, in consultation with MSDE, DGS, and MOSH, to adopt regulations requiring periodic testing for lead in each drinking water outlet located in an occupied public or nonpublic school building;
- MDE to establish a stakeholder group to provide advice and make recommendations regarding the development of the regulations;
- MDE to gather information about the testing processes, protocols, and efforts undertaken by county school systems and nonpublic schools to establish a safe and lead-free environment, including the status of testing plans and any resultant remedial measures;
- MDE, in consultation with MSDE, to provide a mechanism to grant waivers from testing to schools under certain circumstances;
- The initial round of sampling to be completed by July 1, 2018; and
- MDE and MSDE to jointly report to the Governor by Dec. 1, 2018, and on or before December 1 each year thereafter, on the findings of the lead testing conducted by schools.

MDE conducted six training sessions throughout the state during spring 2018. The regulations became effective on April 9, 2018. On May 22, 2018, [MDE's webpage](#) for this initiative was launched. The webpage includes the following:

- Frequently Asked Questions;
- Summaries of the findings of the testing (updated on a routine basis);
- Links to the laws, regulations, and written comments on the proposed regulations, guidance materials, including sampling instructions, a flow chart, and the training presentation that MDE provided in spring 2018;
- Educational materials;
- Forms, templates, and applications for waivers and deferrals;
- A list of state-certified laboratories; and
- Other helpful information.

In August 2018, MDE contracted with a vendor to provide software to track the lead in drinking water sampling data, school inventory information, deferrals, waivers, public notification, and remediation. This software streamlined the reporting process for schools by allowing schools to report data to one location that can be shared among various state and local agencies that are required to receive and review such data. MDE continues to work with the Maryland Department of Health (MDH) to provide a map-based presentation of the lead sample results throughout the state.

UPDATES TO LEGISLATION

Maryland HB 1253 (2019) directs MDE, in consultation with MSDE, to establish and administer a grant program to assist local school systems with the costs associated with implementing remedial measures to address elevated lead levels in drinking water outlets in school buildings, using any federal funding received by MDE or MSDE for this purpose. Once funded and established, this program will also help in reducing the occurrence of elevated lead levels in drinking water in public schools. To date, no such federal funding has been received and the grant program has not yet been established. Additionally, HB 1253 contained a provision to expand the Healthy School Facilities Fund (HSFF) to provide assistance to local school systems in reducing the occurrence of lead levels in drinking water exceeding 5 ppb. In FY20 and FY21, Governor Hogan allocated \$30 million to the fund.

Maryland HB 636 (2021) altered the definition of an elevated level of lead in school drinking water from 20 to 5 ppb (effective June 1, 2021, and applied retroactively). Additionally, the law set a deadline of Aug. 1, 2022, for schools to complete remediation of drinking water outlets that had lead levels between 5 and 20 ppb if the samples were analyzed by a state-certified laboratory by June 1, 2021.

REGULATION IMPLEMENTATION

REGULATION IMPLEMENTATION

In 2018, MDE established [regulations](#) (COMAR 26.16.07) requiring all occupied public and nonpublic schools that serve children in prekindergarten to grade 12 that receive drinking water provided by a public water utility to test for the presence of lead in all drinking water outlets. Testing is to be conducted every 3 years and must be performed during the regular school year while school is in session. As specified in the law, testing is phased in based on the age of the students and the age of the school buildings; schools serving the youngest students (younger children are more vulnerable to the health effects of lead) and school buildings built before the federal lead ban (1978) are the highest priority. The regulations also provide a mechanism for schools to defer the initial sampling for either 12 months or 3 years, and schools may also waive out of testing altogether if specific criteria are met, as set forth in law.

The regulations require that all drinking water outlets in a school building be tested for lead in accordance with specific [sampling procedures](#). If testing reveals that an outlet has an elevated level of lead (greater than 20 ppb through May 31, 2021; and greater than 5 ppb effective June 1, 2021), schools must immediately remove all access to that outlet until it can be remediated, replaced, or permanently removed from service.

Outlets in schools are prioritized according to use – all outlets that provide water for drinking, cooking, or food preparation must be tested for lead. Outlets that are not used for consumption are not required to be tested for lead; however, they must be clearly labeled with signs indicating that the water is not to be used for consumption. Schools must notify students, parents/guardians, and staff of any elevated levels of lead. As directed by HB 270, the regulations follow the guidance in the U.S. Environmental Protection Agency’s (EPA) *3Ts for Reducing Lead in Drinking Water in Schools*, for standards, including sampling procedures, AL, and outlet prioritization.

The regulation provides for deferral of initial testing under specific conditions. MDE, in consultation with MSDE, may grant a deferral not to exceed 12 months from the initial due date if a school has a plan in place for testing all drinking water outlets, as well as a plan detailing actionable steps to be taken if elevated levels of lead are found in a sample from any drinking water outlet. Also, in consultation with MSDE, MDE may grant a school a deferral, not to exceed 3 years from the initial due date, if the school has completed testing for all drinking water outlets in the school in accordance with the regulations, and no test results exceed the AL of 20 ppb (note that as of the 2021-2022 school year, deferral applications are no longer being accepted).

A waiver from future testing may be granted by MDE, in consultation with MSDE, under certain specific situations:

- Type 1, Prior Testing: All drinking water outlets tested for lead no earlier than 5 years before the effective date of the regulations, and every test result for every sample collected was 5 ppb or lower;

- Type 2, Bottled Water: Students in the building do not have access to piped water from any drinking water outlet, and bottled water that meets all National Primary Drinking Water standards is the only source of water for drinking and food preparation; or
- Type 3, Lead-Free Building: The service line, all plumbing connecting the school to the water main, and all interior plumbing in the school building is certified to be lead-free.

Unless the school has been granted a waiver as described above, it must repeat testing every 3 years. Schools granted deferrals must repeat testing 3 years from the deferred due date. Newly constructed schools put into service after the effective date of this regulation must complete initial testing within 12 months of occupancy.

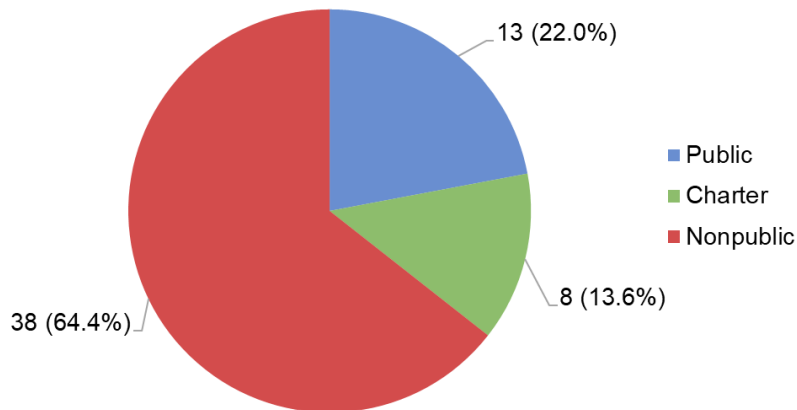
MARYLAND'S LEAD TESTING PROGRAM: 2020 – 2021 SCHOOL YEAR

Testing Results

The fourth year of statewide testing ended July 1, 2021. Schools for which the required 3-year testing cycle was to be completed by July 1, 2021, include all schools serving students in prekindergarten through grade 5, and/or schools with buildings constructed before 1988, unless the schools were granted a deferral. Schools with overlapping age groupings are required to test by the earliest specified date. It should be noted that there are some schools that completed their testing by July 1, 2021, even though their testing due date may have been July 1, 2022, or later; the test results of those schools are included in the current reporting cycle.

Over 100 schools submitted results of lead samples collected during this reporting period (i.e., between July 2, 2020, and July 1, 2021). Of these schools, MDE was able to review results from 61 schools (13 public schools, nine charter schools, and 39 nonpublic schools). Of these 61 schools, 59 schools were determined to have one or more valid first-draw samples (i.e., samples collected and analyzed in accordance with [\(COMAR\) 26.16.07.07](#)). Of these 59 schools, 13 (22%) were public schools, eight (13.6%) were charter schools, and 38 (64.4%) were nonpublic schools (see Figure 1 below). Names and locations of schools submitting results during this reporting period are presented in Tables 1 through 3 in Appendix C.

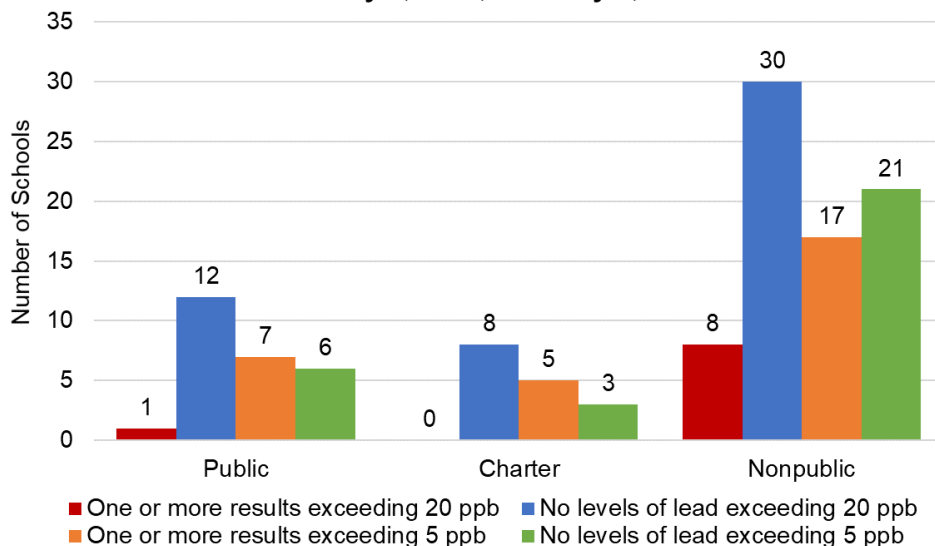
Figure 1: Schools with valid first-draw samples collected between July 2, 2020, and July 1, 2021



Elevated levels of lead (above the AL of 20 ppb through May 31, 2021) were found at nine of the 59 schools that MDE reviewed and determined to have conducted lead testing in accordance with the regulations. Elevated levels of lead (above the new AL of 5 ppb effective June 1, 2021) were found at 29 of the 59 schools that MDE reviewed and determined to have conducted lead testing in accordance with the regulations. There were one public school and eight nonpublic schools

with lead results exceeding 20 ppb; seven public schools, five charter schools, and 17 nonpublic schools had lead results exceeding 5 ppb (see Figure 2 below).

Figure 2: Schools with valid first-draw samples (elevated and non-elevated) collected between July 2, 2020, and July 1, 2021



Of the 91 outlets with lead sample results that exceeded 20 ppb, consumption outlets (i.e., outlets used for drinking, cooking, or food preparation) accounted for 71 (78%) of the elevated results, while 20 (22%) were non-consumption outlets (i.e., outlets used only for purposes other than consumption and not required to be tested). Lead results exceeding 20 ppb were most frequently found in bathroom sinks (57.1% of the 91 outlets), followed by classroom sinks (16.5%), and then kitchen sinks (14.3%). Drinking water fountains comprised 2.2% of elevated outlets.

Of the 210 outlets with lead sample results that exceeded 5 ppb, consumption outlets (i.e., outlets used for drinking, cooking, or food preparation) accounted for 123 (58.6%) of the elevated results, while 87 (41.4%) were non-consumption outlets (i.e., outlets used only for purposes other than consumption and not required to be tested). Lead results exceeding 5 ppb were most frequently found in bathroom sinks (43.3% of the 210 outlets), followed by classroom sinks (20.5%), and then kitchen sinks (13.8%). Drinking water fountains comprised 8.6% of elevated outlets.

A complete list of all outlets found to have elevated levels of lead, including the type, use, location and lead level of the outlet, is presented in tabular form in Tables 7 through 9 located in Appendix E, and in Tables 10 through 12 located in Appendix F.

Deferrals

Through July 1, 2020, schools had the option to apply for a deferral of initial sampling, a provision included in both the law (as a waiver) and regulations, either by 12 months or by 3 years. For the reporting period of July 2, 2020 through July 1, 2021, schools no longer had the option to apply for a deferral of initial sampling since the initial sampling period had ended and the second cycle of 3-year testing began.

During the reporting period, no applications for 12-month deferrals or 3-year deferrals were received from schools that were required to complete initial testing by July 1, 2020.

Waivers

A total of 217 schools that were scheduled for lead testing during the four reporting periods ending July 1 of 2018, 2019, 2020, or 2021 have applied for waivers: 77 schools applied for “prior testing” (Type 1) waivers; 123 schools applied for “bottled water” (Type 2) waivers, and 17 schools applied for “lead-free building” (Type 3) waivers. As of July 1, 2021, MDE has granted a total of 38 waivers: 33 for “prior testing,” three for “bottled water” and two for “lead-free buildings.” Seven applications for “prior testing” waivers and 108 applications for “bottled water” waivers have been denied, and the remaining 64 applications are under review. Details are presented in Appendix G.

Successes

The convening a Stakeholder Advisory Group has proved to be very valuable. The advice and recommendations from school personnel, laboratory personnel, nonpublic school umbrella associations, and others ensured that the regulations developed were comprehensive, effective, and workable. Information gathered in a survey of public schools and nonpublic schools enabled MDE and MSDE to identify strengths and weaknesses of prior testing that had been conducted by schools, allowing the agencies to better target resources.

The six [training sessions](#) held in spring 2018 were useful in minimizing issues such as sampling errors and incomplete paperwork. The training covered all aspects of implementation of HB 270, including sampling and laboratory protocol, paperwork, notification requirements, remediation, and applying for deferrals and waivers. Attendees described the sessions as very helpful.

Direct electronic reporting of lead sample results, available to schools and laboratories, is intended to help streamline the reporting process and allow for lead sample results to be viewed almost immediately by state and local agencies. In addition, an interactive, Geographic Information System (GIS)-based map view of the lead sample results has been tested and is expected to be available in 2022. This new feature will give the public a simple way to view lead sample results for schools throughout Maryland.

Outreach regarding flushing best practices and testing the water in school buildings was sent to Maryland’s public and nonpublic schools several times over the course of the 2020-2021 school

year in an effort to ensure that schools provide the best quality of water, particularly after the water had remained stagnant in the plumbing of school buildings as a result of COVID-19. This outreach included effective strategies for reducing and/or eliminating lead and other potential contaminants in the drinking water. In addition, links to MDE's website and other sources that included flushing information and resources were provided in the outreach materials, along with guidance. The timing of the outreach coincided with the reopening of schools and the transition from virtual learning to hybrid learning to full capacity. The outreach was sent on Aug.19, 2020, Feb.8, 2021, and April 22, 2021.

During the reporting period ending July 1, 2021, MSDE's Interagency Commission on School Construction (IAC) did not solicit nor receive any applications for funding under HSFF; however, applications for funding for 2021 and 2022 will be accepted in FY22. Projects that address drinking water outlets testing above 20 ppb of lead are categorized by the IAC as "Immediate Life/Safety/Health Environmental Risk" and are prioritized for funding; however, projects that address lead levels between 5-20 ppb are also eligible for funding.

During the fourth reporting year, over 1,500 drinking water outlets were tested for lead, of which, 91 (6%) were found to have levels of lead exceeding 20 ppb and 210 (13.9%) were found to have levels of lead exceeding 5 ppb. Those identified as consumption taps were required to be immediately removed from service until they could be remediated, replaced, or permanently removed from service. Outlets identified as non-consumption taps were required to be remediated, replaced, permanently removed from service, or signed as non-drinking water outlets. Notification of students, parents, and school staff was required for any outlet with an elevated level of lead (20 ppb through May 31, 2021 and 5 ppb effective June 1, 2021, applied retroactively beginning in 2017), regardless of whether the outlet was identified as consumption or non-consumption.

Challenges

Many schools and school systems have indicated that the lack of resources available for lead testing required under HB 270, presented a challenge. In addition, for new or recently constructed or renovated schools seeking a waiver based on a "lead-free" building, the expense incurred to receive the proper certification for a waiver from a licensed master plumber or professional engineer/architect may exceed that of testing; it may be that it is easier for truly "lead-free" schools to conduct a round of testing and then apply for a "prior testing" (type 1) waiver.

With an effective date less than two weeks after it was signed into law, and applying retroactively, HB 636 (2021) presented a challenge for many of Maryland's schools and school districts. MDE communicated the new lead AL of 5 ppb, effective June 1, 2021, to schools in a mass mailing sent on May 28, 2021. The lowered AL became effective when schools were ready to conclude the school year; many of which had also struggled with COVID-19-related closures during the school year. This new AL has significantly increased the number of drinking water outlets that must immediately be shut down or removed from service as part of the school's remediation approach. One of Maryland's major school systems reported that 80% of their drinking water outlets have been affected by this new AL of 5 ppb. Schools have communicated

to MDE their concerns with not only the timing of this new law, but the very challenging turn-around required for the follow-up actions for samples that may have been collected as long ago as 2018, including immediately closing access to outlets, collecting flush water samples, parent/guardian and staff notification, and remediation plans. The notification requirement has been particularly challenging for schools, since water from outlets previously testing between 5 and 20 ppb has potentially been used for up to 3 years by students and staff, with parents/guardians and staff only now being notified that the sample results are considered elevated.

The reporting of lead sample data continues to be a challenge for many schools. In order to standardize the lead sample results and ancillary data for import into a data tracking system, MDE developed a reporting template. In some cases, laboratories populate the spreadsheet; in other cases, school personnel type this information into the spreadsheet themselves, resulting in an increased workload. Additionally, the potential for error in transcription during manual data entry is concerning. We expect this issue to be less of a problem as the program matures, and schools and laboratories become more familiar with the process. Laboratories have already developed methods to transfer data from their format to the new format and have assisted schools in their reporting.

Due to the COVID-19 pandemic, many schools experienced difficulties with completing testing within the timeframe specified by Maryland law and regulations. Since regulations require schools to be in regular session, with buildings occupied and water use representative of normal occupied conditions, some schools that had planned to conduct testing during this reporting period school year have been unable to meet the conditions necessary to conduct sampling. School personnel also indicated that water use patterns were likely to change upon reopening, due to the closure of many outlets and the installation of water bottle filling stations in an effort to reduce the spread of COVID-19, and other communicable diseases.

Conclusion

Although Maryland's program for lead testing in drinking water in schools is still in its early stages, much progress has been made on testing: over 100 schools reported the results of their testing during the fourth reporting year, which began on July 2, 2020, and ended on July 1, 2021. With the completion of this fourth year, the majority of applicable schools serving students in prekindergarten through grade 12 have now conducted at least one round of testing.

As Maryland's testing program matures, schools will continue to identify, remove from service, and remediate outlets showing elevated levels of lead. With the strengthening of this initiative via the passage of HB 1253 (2019), and HB 636 (2021), schools will also begin to address outlets exhibiting lead concentrations over 5 ppb. Overall, this constitutes a significant reduction in risk resulting from environmental exposure to lead for approximately 1 million children in Maryland who depend on drinking water provided by the nearly 3,000 public and nonpublic schools in the state.

References

General Assembly of Maryland, House Bill 270 (2017, May 4). Retrieved from mgaleg.maryland.gov/2017RS/Chapters_noln/CH_386_hb0270t.pdf

Maryland Department of the Environment, Maryland Register (2018, Feb. 2). Retrieved from mde.maryland.gov/programs/Water/water_supply/Documents/Maryland_Register_COMAR_26.16.07.pdf

Maryland Department of the Environment, Testing for Lead in Drinking Water – Public and Nonpublic Schools web page (2018). Retrieved from mde.maryland.gov/programs/Water/water_supply/Pages/Testing-For-Lead-In-Drinking-Water-Public-and-Nonpublic-Schools.aspx

Maryland Department of the Environment, Testing for Lead in Drinking Water – Public and Nonpublic Schools, Sample Procedures for Collection of Water from Drinking Water Outlets (2018). Retrieved from mde.maryland.gov/programs/Water/water_supply/Documents/SLT_Sample_Collection_Instructions.pdf

United States Environmental Protection Agency, Water Infrastructure Improvement for the Nation (WIIN) Grant: Lead Testing in School and Child Care Program Drinking Water (2018). Retrieved from epa.gov/dwcapacity/wiin-grant-lead-testing-school-and-child-care-program-drinking-water

APPENDIX A

Glossary

Action Level - A level of lead which, if exceeded, requires the school to complete steps including remedial action, notification, and follow-up sampling.

Bottled water - Water that is intended for human consumption and that is sealed in bottles or other containers and meets the National Primary Drinking Water regulations for all regulated contaminants.

Certified Laboratory - A laboratory certified by the Maryland Department of the Environment to analyze drinking water samples for lead.

Deferral - An extension in the time a school is allowed to complete initial testing.

Department - The Maryland Department of the Environment (MDE).

Drinking water outlet - A potable water fixture that is used for drinking or food preparation.

Drinking water outlets include:

- a. Drinking fountains (DF), including both bubbler and water cooler styles;
- b. Ice-making machines (IM);
- c. Hot drink machines (HD);
- d. Kitchen sinks (KS);
- e. Classroom combination sinks with drinking fountains (CF);
- f. Sinks in home economics classrooms (HE);
- g. Teachers' lounge sinks (TL);
- h. Nurse's office sinks (NO);
- i. Sinks in special education classrooms (SE);
- j. Any other sink known to be used for human consumption (OT).

NOTE: Drinking water outlet does not include an outlet clearly signed as not a drinking water outlet.

Elevated level of lead - A concentration of lead in drinking water that exceeds the level recommended by the EPA in technical guidance documents for schools, including "3Ts for Reducing Lead in Drinking Water in Schools (2006 and later)" or exceeds a State-imposed level. Through May 31, 2021, this level was 20 parts per billion (ppb) in a 250 milliliter (mL) first-draw sample as recommended by EPA in technical guidance (2006); and effective June 1, 2021, this level is 5 ppb in a 250 milliliter (mL) first-draw sample as required by HB 636 (2021).

First-draw sample (FD) - A 250 mL sample of tap water that has been standing in plumbing for 8 to 18 hours and is collected without flushing the tap.

Flushed sample (FL) - A 250 mL sample of tap water that has been drawn from an outlet immediately after the outlet has been run for at least 30 seconds. Flushed samples are collected after all first-draw samples within the building have been collected.

Lead-free - Plumbing that meets the definition of “lead-free” as defined by the Annotated Code of Maryland, Business Occupations and Provisions Article, §§12-101, 12-605.1, and 12-605.2.

MDH - The Maryland Department of Health.

MSDE - The Maryland State Department of Education.

Nonpublic school - An elementary or secondary school, other than a public school, offering education for prekindergarten through grade 12 wherein any child may legally fulfill compulsory school attendance requirements.

Public School - A school, including a charter school that is maintained at public expense for the education of the children of a community or district and constitutes a part of a system of free public education for prekindergarten through grade 12.

School - An individual school or a school system.

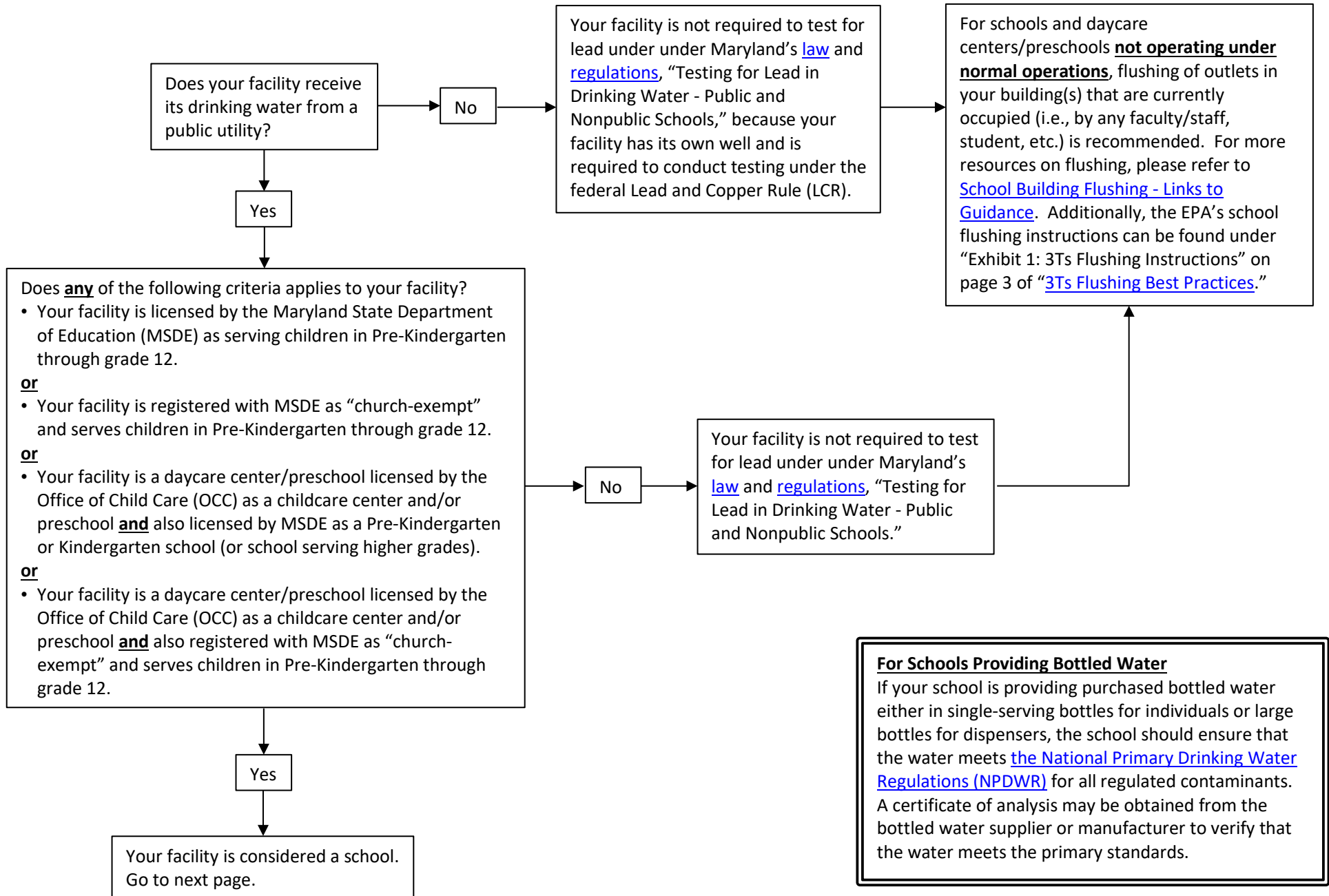
School day - Any day on which school is in session.

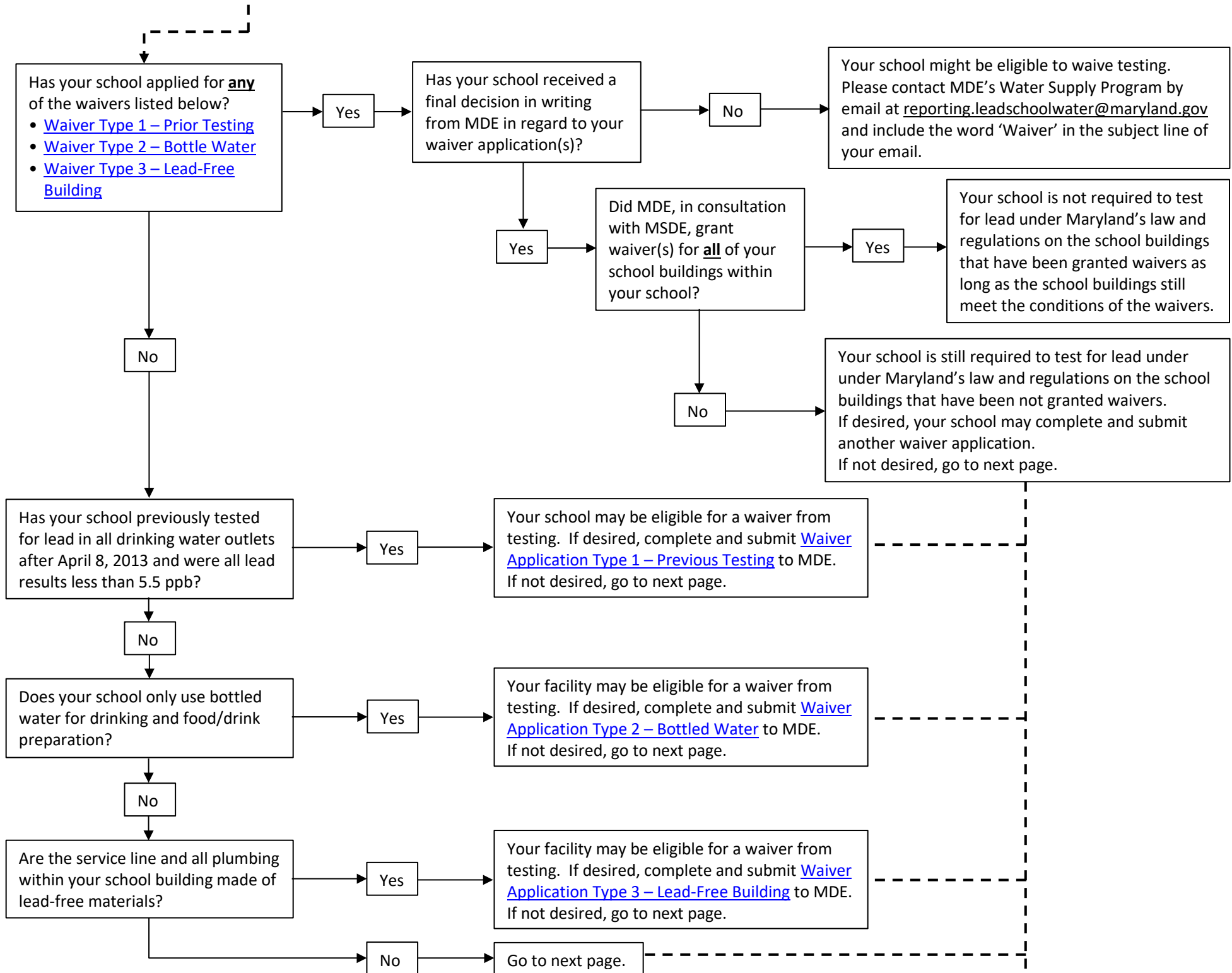
School building - Any structure, facility, addition, or wing of a school that may be occupied by children or students prekindergarten to grade 12. This does not include buildings used solely for administrative purposes.

Technical Guidance - The most recent technical guidance documents issued by EPA for reducing lead in drinking water in schools, such as the “3Ts for Reducing Lead in Drinking Water in Schools” (2006) and any subsequent technical guidance documents issued by EPA for reducing lead in drinking water in schools.

Waiver - An indefinite exemption from testing.

Appendix B: Flowchart for Testing for Lead in Drinking Water - Public and Nonpublic Schools





Appendix B: Flowchart for Testing for Lead in Drinking Water - Public and Nonpublic Schools

Collect first draw samples from all outlets used for drinking and/or food/drink preparation (i.e., consumption outlets), including ice machines and hot drink machines, and outlets not used for drinking and/or food/drink preparation (i.e., non-consumption outlets) that are not [signed as not a drinking water outlet](#). Submit samples within 14 days of sample collection to a State-certified laboratory for analysis.

The lead Action Level under Maryland law ([Chapter 386 \(House Bill 270\), Acts of 2017](#)) of 20 parts per billion (ppb) (i.e., greater than or equal to 20.5 ppb) is effective through May 31, 2021. Effective June 1, 2021, the lead Action Level is 5 ppb (i.e., greater than or equal to 5.5 ppb) under Maryland law ([Chapter 237 \(House Bill 636\), Acts of 2021](#)).

The sample results exceeding the lead Action Level of 5 ppb is interpreted as results of 5.5 ppb or greater.

Do any sample results **exceed** the lead Action Level?

No

Report all sample results as shown on official laboratory report to MDE, MSDE, and your local health department within 30 days of samples being analyzed by the laboratory, using the following forms:

- [Sample Collection Form](#)
- [Laboratory Results Reporting Form](#)
- Official laboratory report signed by the Laboratory Director

Certify to MDE, MSDE, and the appropriate local health department that all drinking water outlets were tested in accordance with the regulation and provide other required information using the [Lead Sample Summary Certification Form](#) within 30 days after the samples were analyzed or 30 days after the end of the school calendar year in which the samples were collected.

Repeat testing of all the outlets in a 3-year cycle.

Yes

Go to next page.

Your facility may be eligible for a waiver from future testing if the most recent first-draw samples from **all** drinking water outlets have lead levels **less than** 5.5 ppb.

If desired, **complete and submit** [Waiver Application Type 1 – Prior Testing](#) to MDE and MSDE.

If an outlet has an elevated level of lead (**All of the following must be performed**)

Close off access to water from the outlets that are used for consumption within 24 hours of receiving laboratory report with elevated levels of lead.

For non-consumption outlets, within 24 hours of receiving laboratory report with elevated levels of lead, either [signage](#) must be posted or access to the outlets must be closed.

Collect a flush sample from each outlet with an elevated level of lead within 5 school days of receiving laboratory report with elevated levels of lead, and submit samples within 14 days of sample collection to a State-certified laboratory for analysis.

Report all sample results to MDE, MSDE, MDH, and your local health department within 30 days of samples being analyzed by the laboratory, using the following forms:

- [Sample Collection Form](#)
- [Laboratory Results Reporting Form](#)
- Official laboratory report signed by the Laboratory Director

Send [notification](#) of elevated lead results to parents, teachers, and staff within 10 school days of receiving laboratory report with elevated levels of lead.

Submit [Certification of Elevated Lead Sample Result Notice](#) to MDE and MSDE within 30 days of sending notification of elevated levels of lead.

Post sample results on school website within 30 school days of receiving laboratory report with elevated levels of lead.

Drinking water outlets with lead results of greater than 5 ppb (i.e., greater than or equal to 5.5 ppb), but less than 20 ppb, are subject to required remediation by August 1, 2022, under legislation ([House Bill 636](#)) passed in 2021, if laboratory analysis of these samples was performed on or before June 1, 2021, including samples analyzed prior to the passage of the Bill.

Report all sample results to MDE, MSDE, MDH, and your local health department within 30 days of samples being analyzed by the laboratory, using the following forms:

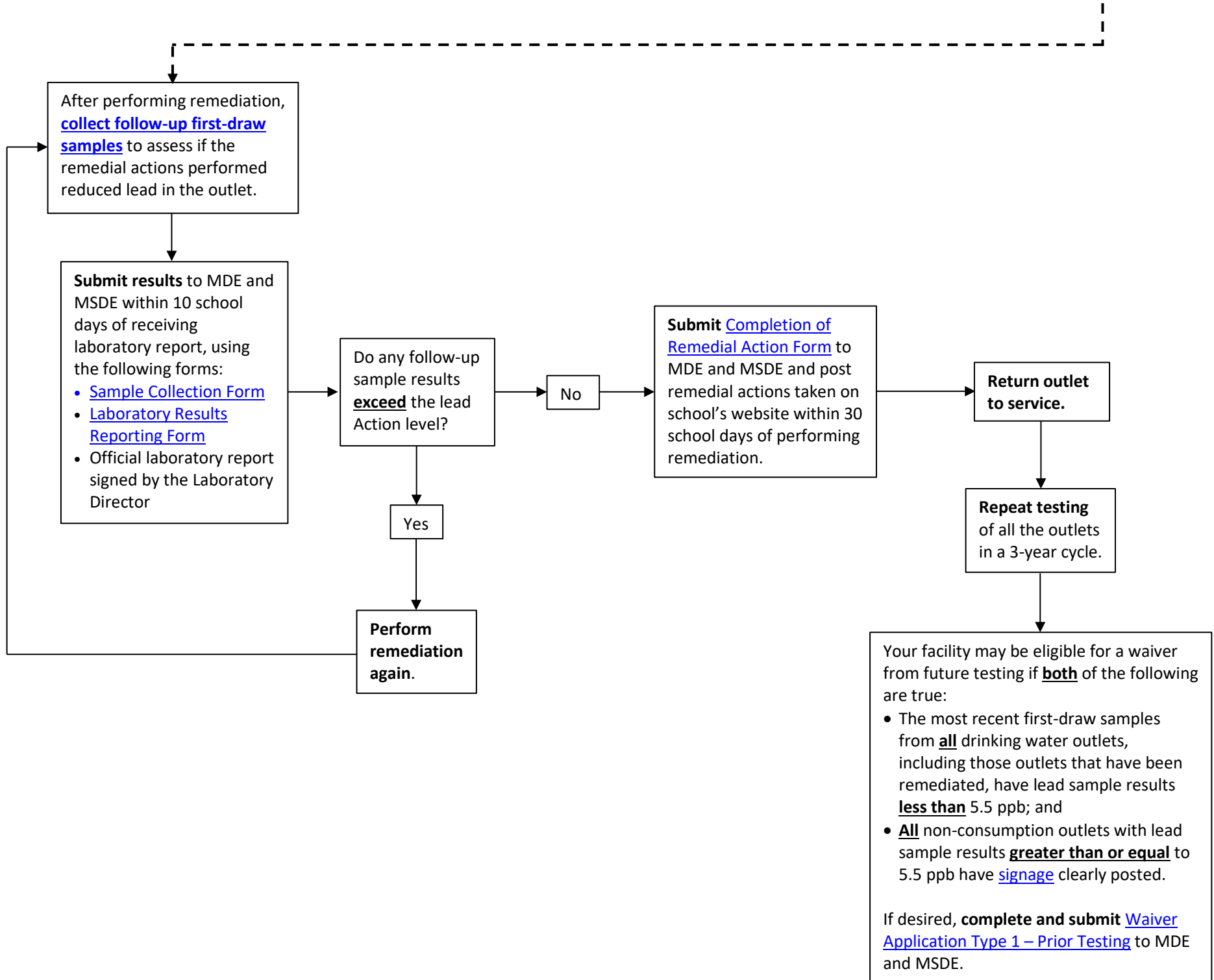
- [Sample Collection Form](#)
- [Laboratory Results Reporting Form](#)
- Official laboratory report signed by the Laboratory Director

Certify to MDE, MSDE, and the appropriate local health department that all drinking water outlets were tested in accordance with the regulation and provide other required information using the [Lead Sample Summary Certification Form](#) within 30 days after the samples were analyzed or 30 days after the end of the school calendar year in which the samples were collected.

Submit [Remedial Plan of Action Form](#) to MDE and MSDE within 30 school days of receiving laboratory report with elevated levels of lead.

Perform remediation on outlets with elevated levels of lead.

Go to next page.



Appendix B: Flowchart for Testing for Lead in Drinking Water - Public and Nonpublic Schools

[This page intentionally left blank]

APPENDIX C

Tables 1-3. Schools Conducted Lead Testing, Reporting Period
Between July 2, 2020, and July 1, 2021

[This page intentionally left blank]

Table 1. Schools Conducted Lead Testing - Public Schools

SCHOOL NAME	SCHOOL STREET ADDRESS	CITY	ZIP	ANY LEAD RESULTS EXCEEDING...	
				...PREVIOUS ACTION LEVEL OF 20 PPB (EFFECTIVE THROUGH MAY 31, 2021)?	...CURRENT ACTION LEVEL OF 5 PPB (EFFECTIVE ON JUNE 1, 2021)?
ALLEGANY COUNTY					
NO DATA					
ANNE ARUNDEL COUNTY					
NO DATA					
BALTIMORE CITY					
NO DATA					
BALTIMORE COUNTY					
NO DATA					
CALVERT COUNTY					
Barstow Elementary	295 JW Williams Road	Prince Frederick	20678	No **	Yes **
Beach Elementary	7900 Old Bayside Road	Chesapeake Beach	20732	No **	Yes **
Chespax	3200 King's Landing Road	Huntingtown	20639	No	No
Dowell Elementary	12680 H.G. Trueman Road	Lusby	20657	No **	No **
St. Leonard Elementary	5370 St. Leonard Road	St. Leonard	20685	No **	Yes **
Windy Hill Elementary	9550 Boyd's Turn Road	Owings	20736	No **,****	No **,****
CAROLINE COUNTY					
NO DATA					
CARROLL COUNTY					
NO DATA					
CECIL COUNTY					
North East High	300 Irishtown Road	North East	21901	No	No
Perryville High	1696 Perryville Road	Perryville	21903	No	Yes

Appendix C: Table 1. Schools Conducted Lead Testing - Public Schools - Period Between July 2, 2020, and July 1, 2021

*Data verification in progress / Insufficient documentation

**Schools with some samples that need further verification / required documentation (Note: only samples that have been verified are included in this report)

***Schools with first-draw and flushed samples

****Includes some samples with improper protocol

SCHOOL NAME	SCHOOL STREET ADDRESS	CITY	ZIP	ANY LEAD RESULTS EXCEEDING...	
				...PREVIOUS ACTION LEVEL OF 20 PPB (EFFECTIVE THROUGH MAY 31, 2021)?	...CURRENT ACTION LEVEL OF 5 PPB (EFFECTIVE ON JUNE 1, 2021)?
CHARLES COUNTY					
Billingsley Elementary	10069 Billingsley Road	White Plains	20695	No **	No **
Dr. Samuel A. Mudd Elementary	820 Stone Avenue	Waldorf	20602	No **	Yes **
DORCHESTER COUNTY					
NO DATA					
FREDERICK COUNTY					
Maryland School for the Deaf - Frederick Campus	101 Clarke Place	Frederick	21795	Yes **,***	Yes **,***
GARRETT COUNTY					
NO DATA					
HARFORD COUNTY					
NO DATA					
HOWARD COUNTY					
Maryland School for the Deaf - Columbia Campus	8169 Old Montgomery Road	Ellicott City	21043	No **,****	Yes **,****
KENT COUNTY					
NO DATA					
MONTGOMERY COUNTY					
NO DATA					
PRINCE GEORGE'S COUNTY					
NO DATA					
QUEEN ANNE'S COUNTY					
NO DATA					
ST. MARY'S COUNTY					
NO DATA					

Appendix C: Table 1. Schools Conducted Lead Testing - Public Schools - Period Between July 2, 2020, and July 1, 2021

*Data verification in progress / Insufficient documentation

**Schools with some samples that need further verification / required documentation (Note: only samples that have been verified are included in this report)

***Schools with first-draw and flushed samples

****Includes some samples with improper protocol

SCHOOL NAME	SCHOOL STREET ADDRESS	CITY	ZIP	ANY LEAD RESULTS EXCEEDING...	
				...PREVIOUS ACTION LEVEL OF 20 PPB (EFFECTIVE THROUGH MAY 31, 2021)?	...CURRENT ACTION LEVEL OF 5 PPB (EFFECTIVE ON JUNE 1, 2021)?
SOMERSET COUNTY					
NO DATA					
TALBOT COUNTY					
NO DATA					
WASHINGTON COUNTY					
NO DATA					
WICOMICO COUNTY					
Chipman Elementary	711 Lake Street	Salisbury	21801	No	No
WORCESTER COUNTY					
NO DATA					

Appendix C: Table 1. Schools Conducted Lead Testing - Public Schools - Period Between July 2, 2020, and July 1, 2021

*Data verification in progress / Insufficient documentation

**Schools with some samples that need further verification / required documentation (Note: only samples that have been verified are included in this report)

***Schools with first-draw and flushed samples

****Includes some samples with improper protocol

[This page intentionally left blank]

Table 2. Schools Conducted Lead Testing - Charter Schools

SCHOOL NAME	SCHOOL STREET ADDRESS	CITY	ZIP	ANY LEAD RESULTS EXCEEDING...	
				...PREVIOUS ACTION LEVEL OF 20 PPB (EFFECTIVE THROUGH MAY 31, 2021)?	...CURRENT ACTION LEVEL OF 5 PPB (EFFECTIVE ON JUNE 1, 2021)?
ANNE ARUNDEL COUNTY****					
Chesapeake Science Point Public Charter	7321 Parkway Drive South	Hanover	21076	No **	No **
BALTIMORE CITY*****					
Patterson Park Public Charter School	27 North Lakewood Avenue	Baltimore	21224	****	****
FREDERICK COUNTY****					
NO DATA					
PRINCE GEORGE'S COUNTY*****					
Chesapeake Math and IT Academy North - Elementary Public Charter	6151 Chevy Chase Drive	Laurel	20707	No **	Yes **
Chesapeake Math and IT Academy North - High Public Charter	14800 Sweitzer Lane	Laurel	20707	No **,***	Yes **,***
Chesapeake Math and IT Academy North - Middle Public Charter	6100 Frost Place	Laurel	20707	No **	Yes **
Chesapeake Math and IT Academy South - Elementary Public Charter	9601 Fallard Terrace	Upper Marlboro	20772	No **	No **
Chesapeake Math and IT Academy South - Middle/High Public Charter	9822 Fallard Court	Upper Marlboro	20772	No **	No **
College Park Academy	5751 Rivertech Court	Riverdale	20737	No ***	Yes ***
Legends Charter School	9700 Philadelphia Court	Lanham	20706	No **	Yes **
ST. MARY'S COUNTY*****					
NO DATA					

Appendix C: Table 2. Schools Conducted Lead Testing - Charter Schools - Period Between July 2, 2020, and July 1, 2021

*Data verification in progress / Insufficient documentation

**Schools with some samples that need further verification / required documentation (Note: only samples that have been verified are included in this report)

***Schools with first-draw and flushed samples

****Includes some samples with improper protocol

*****Only these counties have charter schools

[This page intentionally left blank]

Table 3. Schools Conducted Lead Testing - Nonpublic Schools

SCHOOL NAME	SCHOOL STREET ADDRESS	CITY	ZIP	ANY LEAD RESULTS EXCEEDING...	
				...PREVIOUS ACTION LEVEL OF 20 PPB (EFFECTIVE THROUGH MAY 31, 2021)?	...CURRENT ACTION LEVEL OF 5 PPB (EFFECTIVE ON JUNE 1, 2021)?
ALLEGANY COUNTY					
NO DATA					
ANNE ARUNDEL COUNTY					
Chesterton Academy of Annapolis	31 Rowe Boulevard	Annapolis	21401	No	No
Edinboro Early School	380 Jumpers Hole Road	Severna Park	21146	*	*
Granite Baptist Church School	7823 Oakwood Road	Glen Burnie	21061	No	No
Our Shepherd Preschool	400 Benfield Road	Severna Park	21146	No	Yes
Pathways School - Anne Arundel, The	1819 Bay Ridge Avenue, Suite #340	Annapolis	21403	****	****
Primeron, The	205 Talford Court	Odenton	21113	*	*
St. Martin's in-the-Field Episcopal School	375 Benfield Road	Severna Park	21146	No **,***,****	No **,***,****
BALTIMORE CITY					
Baltimore Academy, The	3800 Frederick Avenue	Baltimore	21229	No	No
Bryn Mawr School, The	109 West Melrose Avenue	Baltimore	21210	*	*
Calvert School - Lower	105 Tuscany Rd.	Baltimore	21210	*	*
Calvert School - Middle	4300 North Charles Street	Baltimore	21218	*	*
Gateway School	5900 Metro Drive	Baltimore	21215	No **	Yes **
Gilman School	5407 Roland Avenue	Baltimore	21210	*	*
Greater Grace Christian Academy	6077 Moravia Park Drive	Baltimore	21206	*	*
GreenMount School, The	501 West 30th Street	Baltimore	21211	No **	No **
Mount Clare Christian School	320 South Vincent Street	Baltimore	21223	*	*
Ohr Chadash Academy	7310 Park Heights Avenue	Baltimore	21208	*	*
The New Century School	724 South Ann Street	Baltimore	21231	*	*

Appendix C: Table 3. Schools Conducted Lead Testing - Nonpublic Schools - Period Between July 2, 2020, and July 1, 2021

*Data verification in progress / Insufficient documentation

**Schools with some samples that need further verification / required documentation (Note: only samples that have been verified are included in this report)

***Schools with first-draw and flushed samples

****Includes some samples with improper protocol

SCHOOL NAME	SCHOOL STREET ADDRESS	CITY	ZIP	ANY LEAD RESULTS EXCEEDING...	
				...PREVIOUS ACTION LEVEL OF 20 PPB (EFFECTIVE THROUGH MAY 31, 2021)?	...CURRENT ACTION LEVEL OF 5 PPB (EFFECTIVE ON JUNE 1, 2021)?
BALTIMORE COUNTY					
Arlington Baptist School	3030 North Rolling Road	Baltimore	21244	No	Yes
Baltimore School of Independent Learners	11400 Cronridge Drive, Suite H	Owings Mills	21117	Yes ^{***,****}	Yes ^{***,****}
Bridges Montessori - Towson	1105 Providence Road	Towson	21286	No	Yes
Concordia Preparatory School	1145 Concordia Drive	Towson	21286	*	*
Emmanuel Lutheran School	929 Ingleside Avenue	Baltimore	21228	Yes ^{**,**}	Yes ^{**,**}
Loyola Blakefield School	500 Chestnut Avenue	Towson	21204	No ^{**,**}	Yes ^{**,**}
Middle River Baptist Child Development Center	610 Middle River Road	Middle River	21220	No	No
New Directions Academy	9700 Old Harford Road	Baltimore	21284	No	No
Park School, The	2425 Old Court Road	Baltimore	21208	*	*
Pilgrim Christian Day School	7200 Liberty Road	Baltimore	21207	No	Yes
Reisterstown United Methodist Nursery School	246 Main Street	Reisterstown	21136	No ^{***}	Yes ^{***}
Shafer Center, The	11500 Cronridge Drive, Suite 130-136	Owings Mills	21117	*	*
St. Timothy's School	8400 Greenspring Avenue	Stevenson	21153	*	*
CALVERT COUNTY					
NO DATA					
CAROLINE COUNTY					
NO DATA					
CARROLL COUNTY					
Christian Preschool and Kindergarten	65 Washington Road	Westminster	21157	*	*
Immanuel Montessori School - Sykesville (formerly Ava Wanas Montessori School - Sykesville)	7590 College Avenue	Sykesville	21784	No	No
CECIL COUNTY					
Shorehaven School	1040 Singerly Road	Elkton	21921	No ^{***}	Yes ^{***}

Appendix C: Table 3. Schools Conducted Lead Testing - Nonpublic Schools - Period Between July 2, 2020, and July 1, 2021

*Data verification in progress / Insufficient documentation

**Schools with some samples that need further verification / required documentation (Note: only samples that have been verified are included in this report)

***Schools with first-draw and flushed samples

****Includes some samples with improper protocol

SCHOOL NAME	SCHOOL STREET ADDRESS	CITY	ZIP	ANY LEAD RESULTS EXCEEDING...	
				...PREVIOUS ACTION LEVEL OF 20 PPB (EFFECTIVE THROUGH MAY 31, 2021)?	...CURRENT ACTION LEVEL OF 5 PPB (EFFECTIVE ON JUNE 1, 2021)?
CHARLES COUNTY					
NO DATA					
DORCHESTER COUNTY					
NO DATA					
FREDERICK COUNTY					
Calvary Weekday School	133 West Second Street	Frederick	21701	*	*
St. John Regional Catholic School	8414 Opossumtown Pike	Frederick	21702	No ****	No ****
GARRETT COUNTY					
NO DATA					
HARFORD COUNTY					
OneSchool Global - Chesapeake Campus (formerly Sterling East - Chesapeake Campus)	900 Trimble Road	Joppa	21085	*	*
St. Joan of Arc School	230 South Law Street	Aberdeen	21001	*	*
HOWARD COUNTY					
Goddard School of Ellicott City, The	5633 Waterloo Road	Ellicott City	21043	No	No
Nurturing Nest Montessori School	5885 Robert Oliver Place	Columbia	21045	No	No
Phillips School - Laurel	8920 Whiskey Bottom Road	Laurel	20723	*	*
KENT COUNTY					
NO DATA					
MONTGOMERY COUNTY					
Acorn Hill Waldorf Kindergarten and Nursery	9504 Brunett Avenue	Silver Spring	20901	No ***,****	No ***,****
Bethesda Community School	7500 Honeywell Lane	Bethesda	20814	*	*
Bullis School	10601 Falls Road	Potomac	20854	Yes **	Yes **

Appendix C: Table 3. Schools Conducted Lead Testing - Nonpublic Schools - Period Between July 2, 2020, and July 1, 2021

*Data verification in progress / Insufficient documentation

**Schools with some samples that need further verification / required documentation (Note: only samples that have been verified are included in this report)

***Schools with first-draw and flushed samples

****Includes some samples with improper protocol

SCHOOL NAME	SCHOOL STREET ADDRESS	CITY	ZIP	ANY LEAD RESULTS EXCEEDING...	
				...PREVIOUS ACTION LEVEL OF 20 PPB (EFFECTIVE THROUGH MAY 31, 2021)?	...CURRENT ACTION LEVEL OF 5 PPB (EFFECTIVE ON JUNE 1, 2021)?
Charles E. Smith Jewish Day School - Lower	1901 East Jefferson Street	Rockville	20852	*	*
Charles E. Smith Jewish Day School - Upper	11710 Hunters Lane	Rockville	20852	*	*
Christ Episcopal Day School	109 South Washington Street	Rockville	20850	*	*
Concord Hill School	6050 Wisconsin Avenue	Chevy Chase	20815	*	*
Connelly School of the Holy Child	9029 Bradley Boulevard	Potomac	20854	*	*
Covenant Life School	7501 Muncaster Mill Road	Gaithersburg	20877	Yes	Yes
Foundation School of Montgomery County, The - Gaithersburg	220 Girard Street, Suite 300	Gaithersburg	20877	*	*
Franklin Country Day Montessori School	10500 Darnestown Road	Rockville	20850	No	No
Franklin Montessori School, The	10500 Darnestown Road	Rockville	20850	No	No
Journey School, The	2430 Spencerville Road	Spencerville	20868	*	*
Landon School	6101 Wilson Lane	Bethesda	20817	*	*
Marcia D. Smith School	9075 Comprint Court	Gaithersburg	20877	*	*
Mary of Nazareth Roman Catholic School	14131 Seneca Road	Darnestown	20874	No	No
McLean School of Maryland, The	8224 Lochinver Lane	Potomac	20854	Yes **	Yes **
Our Lady of Good Counsel High School	17301 Old Vic Boulevard	Olney	20832	Yes **	Yes **
Our Lady of Mercy School	9222 Kentsdale Drive	Potomac	20854	No	No
Pathways School - Edgewood, The	801 University Boulevard West	Silver Spring	20901	No	No
Shaare Torah Early Childhood Center (formerly Shaare Torah Nursery School)	1409 Main Street	Gaithersburg	20878	*	*
Shaare Torah Kindergarten	1409 Main Street	Gaithersburg	20878	*	*
Sidwell Friends School - Lower School	5100 Edgemoor Lane	Bethesda	20814	Yes **	Yes **
St. Andrew's Episcopal School	8804 Postoak Road	Potomac	20852	*	*
Takoma Academy Preparatory School	8300 Carroll Avenue	Takoma Park	20912	*	*

Appendix C: Table 3. Schools Conducted Lead Testing - Nonpublic Schools - Period Between July 2, 2020, and July 1, 2021

*Data verification in progress / Insufficient documentation

**Schools with some samples that need further verification / required documentation (Note: only samples that have been verified are included in this report)

***Schools with first-draw and flushed samples

****Includes some samples with improper protocol

SCHOOL NAME	SCHOOL STREET ADDRESS	CITY	ZIP	ANY LEAD RESULTS EXCEEDING...	
				...PREVIOUS ACTION LEVEL OF 20 PPB (EFFECTIVE THROUGH MAY 31, 2021)?	...CURRENT ACTION LEVEL OF 5 PPB (EFFECTIVE ON JUNE 1, 2021)?
Village Montessori School	20301 Fulks Farm Road	Montgomery Village	20886	*	*
Yeshiva of Greater Washington- Girl's campus	2010 Linden Lane	Silver Spring	20910	*	*
PRINCE GEORGE'S COUNTY					
College Park Nursery School	4512 College Avenue	College Park	20740	Yes ***	Yes ***
DeMatha Catholic High School	4313 Madison Street	Hyattsville	20781	*	*
Foundation Learning Center, The - Landover	855 Brightseat Road, Suite 855	Landover	20785	*	*
Foundation School, The - Largo	1330 McCormick Drive	Largo	20774	*	*
Friends Community School	5901 Westchester Park Drive	College Park	20740	No ****	No ****
Holy Trinity Episcopal Day School - Daisy Lane/High School Prep	11902 Daisy Lane	Glenn Dale	20769	*	*
Holy Trinity Episcopal Day School - Primary School	13106 Annapolis Road	Bowie	20720	*	*
Pathways School - Horizons, The	4600 Powder Mill Road, Suite 100	Beltsville	20705	No	No
SHABACH! Christian Academy	3600 Brightseat Road	Landover	20785	*	*
St. Matthew's United Methodist Early Education Center	14900 Annapolis Road	Bowie	20715	*	*
QUEEN ANNE'S COUNTY					
NO DATA					
ST. MARY'S COUNTY					
King's Christian Academy, The	20738 Point Lookout Road	Callaway	20620	No ***	No ***
Little Sonbeams Christian Preschool	46707 Shangri-La Drive	Lexington Park	20653	No	Yes
SOMERSET COUNTY					
NO DATA					
TALBOT COUNTY					
NO DATA					

Appendix C: Table 3. Schools Conducted Lead Testing - Nonpublic Schools - Period Between July 2, 2020, and July 1, 2021

*Data verification in progress / Insufficient documentation

**Schools with some samples that need further verification / required documentation (Note: only samples that have been verified are included in this report)

***Schools with first-draw and flushed samples

****Includes some samples with improper protocol

SCHOOL NAME	SCHOOL STREET ADDRESS	CITY	ZIP	ANY LEAD RESULTS EXCEEDING...	
				...PREVIOUS ACTION LEVEL OF 20 PPB (EFFECTIVE THROUGH MAY 31, 2021)?	...CURRENT ACTION LEVEL OF 5 PPB (EFFECTIVE ON JUNE 1, 2021)?
WASHINGTON COUNTY					
NO DATA					
WICOMICO COUNTY					
St. Francis de Sales Catholic School	500 Camden Avenue	Salisbury	21801	No	No
WORCESTER COUNTY					
NO DATA					

Appendix C: Table 3. Schools Conducted Lead Testing - Nonpublic Schools - Period Between July 2, 2020, and July 1, 2021

*Data verification in progress / Insufficient documentation

**Schools with some samples that need further verification / required documentation (Note: only samples that have been verified are included in this report)

***Schools with first-draw and flushed samples

****Includes some samples with improper protocol

APPENDIX D

Tables 4-6. Summary of Lead Samples Collected, Reporting Period
Between July 2, 2020, and July 1, 2021

[This page intentionally left blank]

Table 4. Lead Samples+ Collected - Public Schools

County	# Schools** Conducted Testing	Total # Samples	# Samples From Drinking Water Outlets	# Samples From Non-Consumption Outlets	# Samples With Unknown Use	Previous Action Level of 20 ppb (effective through May 31, 2021)				Current Action Level of 5 ppb (effective on June 1, 2021)			
						Total # Elevated Samples	# Elevated Samples From Drinking Outlets	# Elevated Samples From Non-Consumption Outlets	# Elevated Samples With Unknown Use	Total # Elevated Samples	# Elevated Samples From Drinking Outlets	# Elevated Samples From Non-Consumption Outlets	# Elevated Samples With Unknown Use
Allegany	0												
Anne Arundel	0												
Baltimore City	0												
Baltimore County	0												
Calvert	6	107	107	0	0	0	0	0	0	4	4	0	0
Caroline	0												
Carroll	0												
Cecil	2	3	3	0	0	0	0	0	0	1	1	0	0
Charles	2	47	44	3	0	0	0	0	0	4	4	0	0
Dorchester	0												
Frederick	1	150	150	0	0	67	67	0	0	84	84	0	0
Garrett	0												
Harford	0												
Howard	1	16	15	1	0	0	0	0	0	2	1	1	0
Kent	0												
Montgomery	0												
Prince George's	0												
Queen Anne's	0												
St. Mary's	0												
Somerset	0												
Talbot	0												
Washington	0												
Wicomico	1	1	1	0	0	0	0	0	0	0	0	0	0
Worcester	0												
Total	13	324	320	4	0	67	67	0	0	95	94	1	0

Appendix D: Table 4. Lead Samples Collected - Public Schools - Period Between July 2, 2020, and July 1, 2021

*All samples are first-draw

**Number zero (0) indicates data is absent or incomplete

[This page intentionally left blank]

Table 5. Lead Samples+ Collected - Charter Schools

County ⁺⁺⁺	# Schools ^{**} Conducted Testing	Total # Samples	# Samples From Drinking Water Outlets	# Samples From Non-Consumption Outlets	# Samples With Unknown Use	Previous Action Level of 20 ppb (effective through May 31, 2021)				Current Action Level of 5 ppb (effective on June 1, 2021)			
						Total # Elevated Samples	# Elevated Samples From Drinking Outlets	# Elevated Samples From Non-Consumption Outlets	# Elevated Samples With Unknown Use	Total # Elevated Samples	# Elevated Samples From Drinking Outlets	# Elevated Samples From Non-Consumption Outlets	# Elevated Samples With Unknown Use
Anne Arundel	1	10	10	0	0	0	0	0	0	0	0	0	0
Baltimore City	0												
Frederick	0												
Prince George's	7	129	93	36	0	0	0	0	0	15	13	2	0
St. Mary's	0												
Total	8	139	103	36	0	0	0	0	0	15	13	2	0

Appendix D: Table 5. Lead Samples Collected - Charter Schools - Period Between July 2, 2020, and July 1, 2021

*All samples are first-draw

**Number zero (0) indicates data is absent or incomplete

***Only these counties have charter schools

[This page intentionally left blank]

Table 6. Lead Samples⁺ Collected - Nonpublic Schools

County	# Schools ^{**} Conducted Testing	Total # Samples	# Samples From Drinking Water Outlets	# Samples From Non-Consumption Outlets	# Samples With Unknown Use	Previous Action Level of 20 ppb (effective through May 31, 2021)				Current Action Level of 5 ppb (effective on June 1, 2021)			
						Total # Elevated Samples	# Elevated Samples From Drinking Outlets	# Elevated Samples From Non-Consumption Outlets	# Elevated Samples With Unknown Use	Total # Elevated Samples	# Elevated Samples From Drinking Outlets	# Elevated Samples From Non-Consumption Outlets	# Elevated Samples With Unknown Use
Allegany	0												
Anne Arundel	4	50	22	28	0	0	0	0	0	1	0	1	0
Baltimore City	3	30	17	13	0	0	0	0	0	1	1	0	0
Baltimore County	9	141	61	80	0	2	1	1	0	43	9	34	0
Calvert	0												
Caroline	0												
Carroll	1	1	1	0	0	0	0	0	0	0	0	0	0
Cecil	1	17	17	0	0	0	0	0	0	1	1	0	0
Charles	0												
Dorchester	0												
Frederick	1	47	29	18	0	0	0	0	0	0	0	0	0
Garrett	0												
Harford	0												
Howard	2	27	27	0	0	0	0	0	0	0	0	0	0
Kent	0												
Montgomery	11	655	111	544	0	21	2	19	0	49	2	47	0
Prince George's	3	47	9	38	0	1	1	0	0	3	3	0	0
Queen Anne's	0												
St. Mary's	2	18	9	9	0	0	0	0	0	2	0	2	0
Somerset	0												
Talbot	0												
Washington	0												
Wicomico	1	17	16	1	0	0	0	0	0	0	0	0	0
Worcester	0												
Total	38	1050	319	731	0	24	4	20	0	100	16	84	0

Appendix D: Table 6. Lead Samples Collected - Nonpublic Schools - Period Between July 2, 2020, and July 1, 2021

*All samples are first-draw

**Number zero (0) indicates data is absent or incomplete

[This page intentionally left blank]

APPENDIX E

Tables 7-9. Lead Samples Above Current Action Level of 5 ppb (Effective on June 1, 2021, and applied retroactively) and Below Previous Action Level of 20 ppb (through May 31, 2021), Reporting Period Period Between July 2, 2019, and July 1, 2020

[This page intentionally left blank]

Table 7. Lead Samples Above Current Action Level of 5 ppb (Effective on June 1, 2021, and applied retroactively) and Below Previous Action Level of 20 ppb (through May 31, 2021) - Public Schools

SCHOOL NAME	SCHOOL ADDRESS	CITY	FIXTURE TYPE‡	FIXTURE AREA TYPE‡	FIXTURE LOCATION DESCRIPTION‡	DESCRIPTION‡	USE‡	LEAD SAMPLE RESULT (ppb)
CALVERT COUNTY								
Barstow Elementary	295 JW Williams Road	Prince Frederick	Faucet, Cold	Storage Room/Area	Band room storage	Faucet	CO	6.18
Beach Elementary	7900 Old Bayside Road	Chesapeake Beach	Faucet, Cold	Classroom	faucet in C-5	Combo sink	CO	8.90
St. Leonard Elementary	5370 St. Leonard Road	St. Leonard	Faucet, Cold	Kitchen	Kitchen	Left Faucet	CO	5.60
St. Leonard Elementary	5370 St. Leonard Road	St. Leonard	Faucet, Cold	Kitchen	2 compartment sink	solo faucet	CO	5.60
CECIL COUNTY								
Perryville High	1696 Perryville Road	Perryville	Faucet, Cold	Classroom	Room C122	Room C122	CO	14.00
CHARLES COUNTY								
Dr. Samuel A. Mudd Elementary	820 Stone Avenue	Waldorf	Faucet, Cold	Kitchen	Kitchen-Pot Filler	steam kettle pot filler	CO	6.61
Dr. Samuel A. Mudd Elementary	820 Stone Avenue	Waldorf	Ice Machine	Classroom	Pre-K Collaborative Area-Ice Machine (Fridge)	Refrigerator Ice Machine	CO	20.00
Dr. Samuel A. Mudd Elementary	820 Stone Avenue	Waldorf	Ice Machine	Teachers' Lounge/Break Room	205 Staff Lounge-Ice Machine (Fridge)	Refrigerator Ice Machine	CO	6.70
Dr. Samuel A. Mudd Elementary	820 Stone Avenue	Waldorf	Ice Machine	Classroom (Special Education)	207 SOAR Program (Special education)-Ice Machine (Fridge)	Refrigerator Ice Machine	CO	6.18
FREDERICK COUNTY								
Maryland School for the Deaf - Frederick Campus	101 Clarke Place	Frederick	Faucet, Cold	Bathroom	Group Bathroom	Fixture Labeled with Fixture Code	CO	6.31
Maryland School for the Deaf - Frederick Campus	101 Clarke Place	Frederick	Faucet, Cold	Bathroom	Group Bathroom	Fixture Labeled with Fixture Code	CO	7.82
Maryland School for the Deaf - Frederick Campus	101 Clarke Place	Frederick	Faucet, Cold	Bathroom	Group Bathroom	Fixture Labeled with Fixture Code	CO	14.60

Appendix E: Table 7. Lead Samples Above Current Action Level of 5 ppb (Effective on June 1, 2021, and applied retroactively) and Below Previous Action Level of 20 ppb (through May 31, 2021) - Public Schools - Period Between July 2, 2020, and July 1, 2021

‡As reported by school

SCHOOL NAME	SCHOOL ADDRESS	CITY	FIXTURE TYPE‡	FIXTURE AREA TYPE‡	FIXTURE LOCATION DESCRIPTION‡	DESCRIPTION‡	USE‡	LEAD SAMPLE RESULT (ppb)
Maryland School for the Deaf - Frederick Campus	101 Clarke Place	Frederick	Faucet, Cold	Bathroom	Room 3A	Fixture Labeled with Fixture Code	CO	18.20
Maryland School for the Deaf - Frederick Campus	101 Clarke Place	Frederick	Faucet, Cold	Bathroom	hall/bath	Fixture Labeled with Fixture Code	CO	15.10
Maryland School for the Deaf - Frederick Campus	101 Clarke Place	Frederick	Faucet, Cold	Cafeteria	Kitchen	Fixture Labeled with Fixture Code	CO	16.50
Maryland School for the Deaf - Frederick Campus	101 Clarke Place	Frederick	Faucet, Cold	Cafeteria	Serving Line	Fixture Labeled with Fixture Code	CO	7.16
Maryland School for the Deaf - Frederick Campus	101 Clarke Place	Frederick	Faucet, Cold	Cafeteria	Serving Line	Fixture Labeled with Fixture Code	CO	18.00
Maryland School for the Deaf - Frederick Campus	101 Clarke Place	Frederick	Faucet, Cold	Classroom	Room 113	Fixture Labeled with Fixture Code	CO	5.95
Maryland School for the Deaf - Frederick Campus	101 Clarke Place	Frederick	Faucet, Cold	Classroom	Room E121	Fixture Labeled with Fixture Code	CO	13.80
Maryland School for the Deaf - Frederick Campus	101 Clarke Place	Frederick	Faucet, Cold	Classroom	Room F118B-Family Education	Fixture Labeled with Fixture Code	CO	6.41
Maryland School for the Deaf - Frederick Campus	101 Clarke Place	Frederick	Faucet, Cold	Kitchen	Dish Washing Area	Fixture Labeled with Fixture Code	CO	8.45
Maryland School for the Deaf - Frederick Campus	101 Clarke Place	Frederick	Faucet, Cold	Kitchen	Dish Washing Area	Fixture Labeled with Fixture Code	CO	19.60
Maryland School for the Deaf - Frederick Campus	101 Clarke Place	Frederick	Faucet, Cold	Nurse's Office/Health Room	Health Center Room S137	Fixture Labeled with Fixture Code	CO	11.00
Maryland School for the Deaf - Frederick Campus	101 Clarke Place	Frederick	Faucet, Cold	Nurse's Office/Health Room	Health Center Room S139	Fixture Labeled with Fixture Code	CO	16.30

Appendix E: Table 7. Lead Samples Above Current Action Level of 5 ppb (Effective on June 1, 2021, and applied retroactively) and Below Previous Action Level of 20 ppb (through May 31, 2021) - Public Schools - Period Between July 2, 2020, and July 1, 2021

‡As reported by school

SCHOOL NAME	SCHOOL ADDRESS	CITY	FIXTURE TYPE‡	FIXTURE AREA TYPE‡	FIXTURE LOCATION DESCRIPTION‡	DESCRIPTION‡	USE‡	LEAD SAMPLE RESULT (ppb)
Maryland School for the Deaf - Frederick Campus	101 Clarke Place	Frederick	Faucet, Cold	Nurse's Office/Health Room	Health Center Room S142	Fixture Labeled with Fixture Code	CO	9.34
Maryland School for the Deaf - Frederick Campus	101 Clarke Place	Frederick	Drinking Water Fountain - Cooler/Chiller Style	Cafeteria	Dining Room	Fixture Labeled with Fixture Code	CO	5.88
HOWARD COUNTY								
Maryland School for the Deaf - Columbia Campus	8169 Old Montgomery Road	Ellicott City	Ice Machine	Cafeteria	Dietary	Ice Machine	NC	8.00
Maryland School for the Deaf - Columbia Campus	8169 Old Montgomery Road	Ellicott City	Ice Machine	Kitchen	133G/Pantry	Ice Machine	CO	9.00

Appendix E: Table 7. Lead Samples Above Current Action Level of 5 ppb (Effective on June 1, 2021, and applied retroactively) and Below Previous Action Level of 20 ppb (through May 31, 2021) - Public Schools - Period Between July 2, 2020, and July 1, 2021

‡As reported by school

[This page intentionally left blank]

Table 8. Lead Samples Above Current Action Level of 5 ppb (Effective on June 1, 2021, and applied retroactively) and Below Previous Action Level of 20 ppb (through May 31, 2021) - Charter Schools

SCHOOL NAME	SCHOOL ADDRESS	CITY	FIXTURE TYPE‡	FIXTURE AREA TYPE‡	FIXTURE LOCATION DESCRIPTION‡	DESCRIPTION‡	USE‡	LEAD SAMPLE RESULT (ppb)
PRINCE GEORGE'S COUNTY								
Chesapeake Math and IT Academy North - Elementary Public Charter	6151 Chevy Chase Drive	Laurel	Faucet, Cold	Classroom	Classroom 272	Sink	CO	10.20
Chesapeake Math and IT Academy North - Elementary Public Charter	6151 Chevy Chase Drive	Laurel	Drinking Water Fountain - Cooler/Chiller Style	Gymnasium	Gym adj. to Storage	HIGH/LOW	CO	5.70
Chesapeake Math and IT Academy North - Elementary Public Charter	6151 Chevy Chase Drive	Laurel	Drinking Water Fountain - Cooler/Chiller Style	Hallway	Hallway adj. to 280	HIGH/LOW	CO	10.00
Chesapeake Math and IT Academy North - Elementary Public Charter	6151 Chevy Chase Drive	Laurel	Drinking Water Fountain - Cooler/Chiller Style	Office	Main Office	LOW/RIGHT	CO	6.70
Chesapeake Math and IT Academy North - High Public Charter	14800 Sweitzer Lane	Laurel	Faucet, Cold	Teachers' Lounge/Break Room	In Teacher lounge 212	Sink	CO	7.40
Chesapeake Math and IT Academy North - Middle Public Charter	6100 Frost Place	Laurel	Faucet, Cold	Classroom	Art room 144	Sink Faucet in Room 144 (LR)	CO	8.00
Chesapeake Math and IT Academy North - Middle Public Charter	6100 Frost Place	Laurel	Bottle Refill Dispenser/Water Refill Station	Gymnasium	Inside the Gym	Bottle filler	CO	5.60
College Park Academy	5751 Rivertech Court	Riverdale	Faucet, Cold	Bathroom	Inside bathroom HW	Sink closest to bathroom enter/exit door	NC	6.00
College Park Academy	5751 Rivertech Court	Riverdale	Faucet, Cold	Bathroom	Inside bathroom HW	Sink closest to handicapped stall	NC	15.00

Appendix E: Table 8. Lead Samples Above Current Action Level of 5 ppb (Effective on June 1, 2021, and applied retroactively) and Below Previous Action Level of 20 ppb (through May 31, 2021) - Charter Schools - Period Between July 2, 2020, and July 1, 2021

‡As reported by school

SCHOOL NAME	SCHOOL ADDRESS	CITY	FIXTURE TYPE‡	FIXTURE AREA TYPE‡	FIXTURE LOCATION DESCRIPTION‡	DESCRIPTION‡	USE‡	LEAD SAMPLE RESULT (ppb)
Legends Charter School	9700 Philadelphia Court	Lanham	Faucet, Cold	Classroom	120 Art Room 2	Sink	CO	8.90
Legends Charter School	9700 Philadelphia Court	Lanham	Faucet, Cold	Classroom	Class Room 316	Sink	CO	6.40
Legends Charter School	9700 Philadelphia Court	Lanham	Faucet, Cold	Nurse's Office/Health Room	Health Suite 105G Treatment Room	Sink	CO	6.50
Legends Charter School	9700 Philadelphia Court	Lanham	Drinking Water Fountain - Cooler/Chiller Style	Hallway	Hallway Near 625 Multipurpose Room(High)	High-Low	CO	6.70
Legends Charter School	9700 Philadelphia Court	Lanham	Bottle Refill Dispenser/Water Refill Station	Hallway	Hallway Near 621 Dining	BOTTLE FILLER	CO	5.50
Legends Charter School	9700 Philadelphia Court	Lanham	Bottle Refill Dispenser/Water Refill Station	Hallway	Hallway Near Class Room 702	BOTTLE FILLER	CO	5.70

Appendix E: Table 8. Lead Samples Above Current Action Level of 5 ppb (Effective on June 1, 2021, and applied retroactively) and Below Previous Action Level of 20 ppb (through May 31, 2021) - Charter Schools - Period Between July 2, 2020, and July 1, 2021

‡As reported by school

Table 9. Lead Samples Above Current Action Level of 5 ppb (Effective on June 1, 2021, and applied retroactively) and Below Previous Action Level of 20 ppb (through May 31, 2021) - Nonpublic Schools

SCHOOL NAME	SCHOOL ADDRESS	CITY	FIXTURE TYPE‡	FIXTURE AREA TYPE‡	FIXTURE LOCATION DESCRIPTION‡	DESCRIPTION‡	USE‡	LEAD SAMPLE RESULT (ppb)
ANNE ARUNDEL COUNTY								
Our Shepherd Preschool	400 Benfield Road	Severna Park	Faucet, Cold	Other	In Sacristy within the Sanctuary front left	Hand sink on right wall	NC	19.00
BALTIMORE CITY								
Gateway School	5900 Metro Drive	Baltimore	Ice Machine	Teachers' Lounge/Break Room	1st Floor - Gateway - Kitchen Refrigerator Ice Machine	Refrigerator Ice Machine	CO	6.18
BALTIMORE COUNTY								
Arlington Baptist School	3030 North Rolling Road	Baltimore	Faucet, Cold	Bathroom	Boys restroom near gymnasium	Right Middle Sink	NC	5.70
Arlington Baptist School	3030 North Rolling Road	Baltimore	Faucet, Cold	Bathroom	Boys restroom near gymnasium	Right Sink	NC	6.50
Arlington Baptist School	3030 North Rolling Road	Baltimore	Faucet, Cold	Bathroom	Girls	Left Sink	NC	6.60
Arlington Baptist School	3030 North Rolling Road	Baltimore	Faucet, Cold	Kitchen	room 312		CO	6.60
Arlington Baptist School	3030 North Rolling Road	Baltimore	Faucet, Cold	Other	Church Nursery		NC	6.00
Arlington Baptist School	3030 North Rolling Road	Baltimore	Drinking Water Fountain - Cooler/Chiller Style	Hallway	2nd Floor		CO	6.50
Arlington Baptist School	3030 North Rolling Road	Baltimore	Drinking Water Fountain - Cooler/Chiller Style	Hallway	1st Floor	near restroom by church offices	CO	11.00
Bridges Montessori - Towson	1105 Providence Road	Towson	Faucet, Cold	Kitchen	Church Kitchen	Faucet 1	CO	7.70
Emmanuel Lutheran School	929 Ingleside Avenue	Baltimore	Faucet, Cold	Bathroom	across from kit.	lt sink	NC	12.10
Emmanuel Lutheran School	929 Ingleside Avenue	Baltimore	Faucet, Cold	Bathroom	across from kit	rt sink	NC	5.90

Appendix E: Table 9. Lead Samples Above Current Action Level of 5 ppb (Effective on June 1, 2021, and applied retroactively) and Below Previous Action Level of 20 ppb (through May 31, 2021) - Nonpublic Schools - Period Between July 2, 2020, and July 1, 2021

‡As reported by school

SCHOOL NAME	SCHOOL ADDRESS	CITY	FIXTURE TYPE‡	FIXTURE AREA TYPE‡	FIXTURE LOCATION DESCRIPTION‡	DESCRIPTION‡	USE‡	LEAD SAMPLE RESULT (ppb)
Emmanuel Lutheran School	929 Ingleside Avenue	Baltimore	Faucet, Cold	Bathroom	across from kit	ctr sink	NC	6.80
Emmanuel Lutheran School	929 Ingleside Avenue	Baltimore	Faucet, Cold	Bathroom	across from school off.	only sink	NC	5.70
Emmanuel Lutheran School	929 Ingleside Avenue	Baltimore	Faucet, Cold	Bathroom	across from school off.	combo fountain/filler	NC	9.50
Emmanuel Lutheran School	929 Ingleside Avenue	Baltimore	Faucet, Cold	Bathroom	lt of alter facing front	single faucet	NC	14.10
Emmanuel Lutheran School	929 Ingleside Avenue	Baltimore	Faucet, Cold	Bathroom	across from rm 115	double auto shut off	NC	6.10
Emmanuel Lutheran School	929 Ingleside Avenue	Baltimore	Faucet, Cold	Bathroom	across from rm 115	double auto shut off	NC	8.80
Emmanuel Lutheran School	929 Ingleside Avenue	Baltimore	Faucet, Cold	Bathroom	across from rm 115	double auto shut off	NC	10.30
Emmanuel Lutheran School	929 Ingleside Avenue	Baltimore	Faucet, Cold	Bathroom	across from rm 117	double auto shut off	NC	5.70
Emmanuel Lutheran School	929 Ingleside Avenue	Baltimore	Faucet, Cold	Bathroom	across from rm 117	double auto shut off	NC	10.90
Emmanuel Lutheran School	929 Ingleside Avenue	Baltimore	Faucet, Cold	Bathroom	by glass doors	double auto shut off	NC	7.20
Emmanuel Lutheran School	929 Ingleside Avenue	Baltimore	Faucet, Cold	Bathroom	at double doors to rear exit	single faucet	NC	6.40
Emmanuel Lutheran School	929 Ingleside Avenue	Baltimore	Faucet, Cold	Bathroom	at double doors to rear exit	single faucet	NC	14.00
Emmanuel Lutheran School	929 Ingleside Avenue	Baltimore	Faucet, Cold	Classroom	upper hallway	single faucet	NC	7.30
Emmanuel Lutheran School	929 Ingleside Avenue	Baltimore	Faucet, Cold	Classroom	upper hallway	single faucet	NC	9.60
Emmanuel Lutheran School	929 Ingleside Avenue	Baltimore	Faucet, Cold	Classroom	upper hallway	single faucet	NC	10.00
Emmanuel Lutheran School	929 Ingleside Avenue	Baltimore	Faucet, Cold	Classroom	lt corner from hallway	combo fountain/filler	NC	6.30
Emmanuel Lutheran School	929 Ingleside Avenue	Baltimore	Faucet, Cold	Classroom	to lt of entrance	single faucet	NC	9.50
Emmanuel Lutheran School	929 Ingleside Avenue	Baltimore	Faucet, Cold	Kitchen	across from entrance	single faucet	NC	12.30

Appendix E: Table 9. Lead Samples Above Current Action Level of 5 ppb (Effective on June 1, 2021, and applied retroactively) and Below Previous Action Level of 20 ppb (through May 31, 2021) - Nonpublic Schools - Period Between July 2, 2020, and July 1, 2021

‡As reported by school

SCHOOL NAME	SCHOOL ADDRESS	CITY	FIXTURE TYPE‡	FIXTURE AREA TYPE‡	FIXTURE LOCATION DESCRIPTION‡	DESCRIPTION‡	USE‡	LEAD SAMPLE RESULT (ppb)
Emmanuel Lutheran School	929 Ingleside Avenue	Baltimore	Faucet, Cold	Kitchen	across from entrance	single faucet	NC	14.10
Emmanuel Lutheran School	929 Ingleside Avenue	Baltimore	Faucet, Cold	Teachers' Lounge/Break Room	west wall ctr	single faucet	NC	6.50
Emmanuel Lutheran School	929 Ingleside Avenue	Baltimore	Faucet, Cold	Teachers' Lounge/Break Room	west wall lt	single faucet	NC	9.30
Emmanuel Lutheran School	929 Ingleside Avenue	Baltimore	Drinking Water Fountain - Cooler/Chiller Style	Hallway	across from gathering room	chiller fountain	CO	5.90
Emmanuel Lutheran School	929 Ingleside Avenue	Baltimore	Drinking Water Fountain - Cooler/Chiller Style	Hallway	across from gathering room	chiller fountain	CO	5.60
Emmanuel Lutheran School	929 Ingleside Avenue	Baltimore	Drinking Water Fountain - Cooler/Chiller Style	Hallway	across from rm117	chiller fountain	CO	7.30
Emmanuel Lutheran School	929 Ingleside Avenue	Baltimore	Bottle Refill Dispenser/Water Refill Station	Hallway	east wall at stairs across from rm 124	bottle fill station	CO	8.90
Loyola Blakefield School	500 Chestnut Avenue	Towson	Faucet, Cold	Kitchen	Basement Level fr. George lounge	Right/Left Faucet	NC	9.30
Pilgrim Christian Day School	7200 Liberty Road	Baltimore	Faucet, Cold	Bathroom	Multisex Bathroom Handsink	Left Faucet	NC	7.50
Pilgrim Christian Day School	7200 Liberty Road	Baltimore	Faucet, Cold	Bathroom	Men's Bathroom Handsink	Right Faucet	NC	8.20
Pilgrim Christian Day School	7200 Liberty Road	Baltimore	Faucet, Cold	Kitchen	Kitchen Handsink	Kitchen	NC	11.80
Reisterstown United Methodist Nursery School	246 Main Street	Reisterstown	Faucet, Cold	Bathroom	fours' room	Bathroom	NC	10.00

Appendix E: Table 9. Lead Samples Above Current Action Level of 5 ppb (Effective on June 1, 2021, and applied retroactively) and Below Previous Action Level of 20 ppb (through May 31, 2021) - Nonpublic Schools - Period Between July 2, 2020, and July 1, 2021

‡As reported by school

SCHOOL NAME	SCHOOL ADDRESS	CITY	FIXTURE TYPE‡	FIXTURE AREA TYPE‡	FIXTURE LOCATION DESCRIPTION‡	DESCRIPTION‡	USE‡	LEAD SAMPLE RESULT (ppb)
Reisterstown United Methodist Nursery School	246 Main Street	Reisterstown	Faucet, Cold	Bathroom	tows' room	Bathroom	NC	11.40
CECIL COUNTY								
Shorehaven School	1040 Singerly Road	Elkton	Faucet, Cold	Bathroom	Classroom 103	single faucet	CO	15.30
MONTGOMERY COUNTY								
Bullis School	10601 Falls Road	Potomac	Faucet, Cold	Bathroom	1st Floor Women's Sink A	Far left sink	NC	8.80
Bullis School	10601 Falls Road	Potomac	Faucet, Cold	Bathroom	1st Floor Women's Sink D	Far right sink	NC	7.20
Bullis School	10601 Falls Road	Potomac	Faucet, Cold	Bathroom	2nd Floor Men's Sink B	Center left sink	NC	6.30
Bullis School	10601 Falls Road	Potomac	Faucet, Cold	Bathroom	Assistant Head Bathroom sink	Back wall	NC	5.80
Bullis School	10601 Falls Road	Potomac	Faucet, Cold	Bathroom	Men's room Sink A	Left Sink	NC	7.20
Bullis School	10601 Falls Road	Potomac	Faucet, Cold	Kitchen	Kitchen Sink	Back wall counter	NC	6.60
Bullis School	10601 Falls Road	Potomac	Faucet, Cold	Kitchen	Kitchen Sink C	Right Sink	NC	6.20
Bullis School	10601 Falls Road	Potomac	Faucet, Cold	Locker Room	LL Boy's Locker Sink A	Far left sink	NC	5.70
Bullis School	10601 Falls Road	Potomac	Faucet, Cold	Locker Room	LL Girl's Locker Sink C	Center right sink	NC	12.00
Bullis School	10601 Falls Road	Potomac	Faucet, Cold	Office	Database office Sink	Left Wall	NC	13.00
Bullis School	10601 Falls Road	Potomac	Faucet, Cold	Office	Girls Locker Coaches Office	Right wall	NC	14.00
Bullis School	10601 Falls Road	Potomac	Faucet, Cold	Classroom (Photo Lab/Dark Room)	Room 213 Sink	Front wall counter	NC	10.00

Appendix E: Table 9. Lead Samples Above Current Action Level of 5 ppb (Effective on June 1, 2021, and applied retroactively) and Below Previous Action Level of 20 ppb (through May 31, 2021) - Nonpublic Schools - Period Between July 2, 2020, and July 1, 2021

‡As reported by school

SCHOOL NAME	SCHOOL ADDRESS	CITY	FIXTURE TYPE‡	FIXTURE AREA TYPE‡	FIXTURE LOCATION DESCRIPTION‡	DESCRIPTION‡	USE‡	LEAD SAMPLE RESULT (ppb)
Bullis School	10601 Falls Road	Potomac	Spigot (with threadings for hose connection)	Outdoors	Outdoor Spigot	Front; girls locker room and trainers	NC	8.30
Covenant Life School	7501 Muncaster Mill Road	Gaithersburg	Faucet, Cold	Classroom	CR 241 Classroom	Counter Sink	NC	6.90
Covenant Life School	7501 Muncaster Mill Road	Gaithersburg	Faucet, Cold	Classroom	CR 221 Classroom	Counter Sink	NC	8.80
McLean School of Maryland, The	8224 Lochinver Lane	Potomac	Faucet, Cold	Classroom	Room 113 combination sink	Room 113 combination sink	NC	13.00
McLean School of Maryland, The	8224 Lochinver Lane	Potomac	Faucet, Cold	Classroom	Room 116 Combination sink	Room 116 Combination sink	NC	12.00
McLean School of Maryland, The	8224 Lochinver Lane	Potomac	Faucet, Cold	Classroom	Room 115 combination sink	Room 115 combination sink	NC	14.00
McLean School of Maryland, The	8224 Lochinver Lane	Potomac	Faucet, Cold	Classroom	Room 305 sink a	Room 305 sink a	NC	7.10
Our Lady of Good Counsel High School	17301 Old Vic Boulevard	Olney	Faucet, Cold	Classroom (Science Lab)	Science Lab - Faucet	Teacher Desk - Science Lab	NC	8.50
Our Lady of Good Counsel High School	17301 Old Vic Boulevard	Olney	Faucet, Cold	Classroom (Science Lab)	Science Lab - Faucet	Science Lab - Faucet	NC	8.00
Our Lady of Good Counsel High School	17301 Old Vic Boulevard	Olney	Faucet, Cold	Classroom (Science Lab)	Science Lab - Faucet	Science Lab - Faucet	NC	17.40
Our Lady of Good Counsel High School	17301 Old Vic Boulevard	Olney	Faucet, Cold	Classroom (Science Lab)	Science Lab - Faucet	Science Classroom - Lab	NC	6.00
Our Lady of Good Counsel High School	17301 Old Vic Boulevard	Olney	Faucet, Cold	Classroom (Science Lab)	223 Science Lab Faucet	Faucet in Classroom	NC	15.20
Our Lady of Good Counsel High School	17301 Old Vic Boulevard	Olney	Faucet, Cold	Classroom (Science Lab)	Classroom Lab Faucet	219 Lab sink	NC	9.00

Appendix E: Table 9. Lead Samples Above Current Action Level of 5 ppb (Effective on June 1, 2021, and applied retroactively) and Below Previous Action Level of 20 ppb (through May 31, 2021) - Nonpublic Schools - Period Between July 2, 2020, and July 1, 2021

‡As reported by school

SCHOOL NAME	SCHOOL ADDRESS	CITY	FIXTURE TYPE‡	FIXTURE AREA TYPE‡	FIXTURE LOCATION DESCRIPTION‡	DESCRIPTION‡	USE‡	LEAD SAMPLE RESULT (ppb)
Our Lady of Good Counsel High School	17301 Old Vic Boulevard	Olney	Faucet, Cold	Classroom (Science Lab)	Classroom Lab Faucet	219 Lab sink	NC	11.20
Sidwell Friends School - Lower School	5100 Edgemoor Lane	Bethesda	Faucet, Cold	Bathroom	Boys bathroom sink B	Boys bathroom sink B	NC	7.40
Sidwell Friends School - Lower School	5100 Edgemoor Lane	Bethesda	Faucet, Cold	Workroom	Math Workroom Sink/Faucet B	Math Workroom Sink B	NC	15.00
PRINCE GEORGE'S COUNTY								
College Park Nursery School	4512 College Avenue	College Park	Drinking Water Fountain - Bubbler Style	Classroom	Room A - Terri's Room	Fountain	CO	14.00
College Park Nursery School	4512 College Avenue	College Park	Drinking Water Fountain - Bubbler Style	Classroom	Room C - Robin's Room	Fountain	CO	9.70
ST. MARY'S COUNTY								
Little Sonbeams Christian Preschool	46707 Shangri-La Drive	Lexington Park	Faucet, Cold	Bathroom	Room 107 Bathroom Sink	Cold Water Side	NC	10.00
Little Sonbeams Christian Preschool	46707 Shangri-La Drive	Lexington Park	Faucet, Cold	Bathroom	Second Floor Women's Bathroom Sink	Cold Water Side	NC	10.00

Appendix E: Table 9. Lead Samples Above Current Action Level of 5 ppb (Effective on June 1, 2021, and applied retroactively) and Below Previous Action Level of 20 ppb (through May 31, 2021) - Nonpublic Schools - Period Between July 2, 2020, and July 1, 2021

‡As reported by school

APPENDIX F

Tables 10-12. Lead Samples Above Previous Action Level of 20 ppb
(through May 31, 2021) Between July 2, 2020, and July 1, 2021

[This page intentionally left blank]

Table 10. Lead Samples Above Previous Action Level of 20 ppb (through May 31, 2021) - Public Schools

SCHOOL NAME	SCHOOL ADDRESS	CITY	FIXTURE TYPE‡	FIXTURE AREA TYPE‡	FIXTURE LOCATION DESCRIPTION‡	DESCRIPTION‡	USE‡	LEAD SAMPLE RESULT (ppb)
FREDERICK COUNTY								
Maryland School for the Deaf - Frederick Campus	101 Clarke Place	Frederick	Faucet, Cold	Bathroom	Group Bathroom	Fixture Labeled with Fixture Code	CO	49.60
Maryland School for the Deaf - Frederick Campus	101 Clarke Place	Frederick	Faucet, Cold	Bathroom	Group Bathroom	Fixture Labeled with Fixture Code	CO	50.00
Maryland School for the Deaf - Frederick Campus	101 Clarke Place	Frederick	Faucet, Cold	Bathroom	Group Bathroom	Fixture Labeled with Fixture Code	CO	50.70
Maryland School for the Deaf - Frederick Campus	101 Clarke Place	Frederick	Faucet, Cold	Bathroom	Group Bathroom	Fixture Labeled with Fixture Code	CO	65.10
Maryland School for the Deaf - Frederick Campus	101 Clarke Place	Frederick	Faucet, Cold	Bathroom	Group Bathroom	Fixture Labeled with Fixture Code	CO	80.30
Maryland School for the Deaf - Frederick Campus	101 Clarke Place	Frederick	Faucet, Cold	Bathroom	Group Bathroom	Fixture Labeled with Fixture Code	CO	81.70
Maryland School for the Deaf - Frederick Campus	101 Clarke Place	Frederick	Faucet, Cold	Bathroom	Group Bathroom	Fixture Labeled with Fixture Code	CO	106.00
Maryland School for the Deaf - Frederick Campus	101 Clarke Place	Frederick	Faucet, Cold	Bathroom	Group Bathroom	Fixture Labeled with Fixture Code	CO	123.00
Maryland School for the Deaf - Frederick Campus	101 Clarke Place	Frederick	Faucet, Cold	Bathroom	Group Bathroom	Fixture Labeled with Fixture Code	CO	134.00
Maryland School for the Deaf - Frederick Campus	101 Clarke Place	Frederick	Faucet, Cold	Bathroom	Group Bathroom	Fixture Labeled with Fixture Code	CO	153.00
Maryland School for the Deaf - Frederick Campus	101 Clarke Place	Frederick	Faucet, Cold	Bathroom	Group Bathroom	Fixture Labeled with Fixture Code	CO	180.00

Appendix F: Table 10. Lead Samples Above Previous Action Level of 20 ppb (through May 31, 2021) - Public Schools - Period Between July 2, 2020, and July 1, 2021

‡As reported by school

SCHOOL NAME	SCHOOL ADDRESS	CITY	FIXTURE TYPE‡	FIXTURE AREA TYPE‡	FIXTURE LOCATION DESCRIPTION‡	DESCRIPTION‡	USE‡	LEAD SAMPLE RESULT (ppb)
Maryland School for the Deaf - Frederick Campus	101 Clarke Place	Frederick	Faucet, Cold	Bathroom	Group Bathroom	Fixture Labeled with Fixture Code	CO	202.00
Maryland School for the Deaf - Frederick Campus	101 Clarke Place	Frederick	Faucet, Cold	Bathroom	Group Bathroom	Fixture Labeled with Fixture Code	CO	209.00
Maryland School for the Deaf - Frederick Campus	101 Clarke Place	Frederick	Faucet, Cold	Bathroom	Group Bathroom	Fixture Labeled with Fixture Code	CO	224.00
Maryland School for the Deaf - Frederick Campus	101 Clarke Place	Frederick	Faucet, Cold	Bathroom	Group Bathroom	Fixture Labeled with Fixture Code	CO	242.00
Maryland School for the Deaf - Frederick Campus	101 Clarke Place	Frederick	Faucet, Cold	Bathroom	Group Bathroom	Fixture Labeled with Fixture Code	CO	248.00
Maryland School for the Deaf - Frederick Campus	101 Clarke Place	Frederick	Faucet, Cold	Bathroom	Group Bathroom	Fixture Labeled with Fixture Code	CO	250.00
Maryland School for the Deaf - Frederick Campus	101 Clarke Place	Frederick	Faucet, Cold	Bathroom	Group Bathroom	Fixture Labeled with Fixture Code	CO	418.00
Maryland School for the Deaf - Frederick Campus	101 Clarke Place	Frederick	Faucet, Cold	Bathroom	Group Bathroom	Fixture Labeled with Fixture Code	CO	852.00
Maryland School for the Deaf - Frederick Campus	101 Clarke Place	Frederick	Faucet, Cold	Bathroom	Group Bathroom	Fixture Labeled with Fixture Code	CO	459.00
Maryland School for the Deaf - Frederick Campus	101 Clarke Place	Frederick	Faucet, Cold	Bathroom	Group Bathroom	Fixture Labeled with Fixture Code	CO	271.00
Maryland School for the Deaf - Frederick Campus	101 Clarke Place	Frederick	Faucet, Cold	Bathroom	Group Bathroom	Fixture Labeled with Fixture Code	CO	2946.00

Appendix F: Table 10. Lead Samples Above Previous Action Level of 20 ppb (through May 31, 2021) - Public Schools - Period Between July 2, 2020, and July 1, 2021

‡As reported by school

SCHOOL NAME	SCHOOL ADDRESS	CITY	FIXTURE TYPE‡	FIXTURE AREA TYPE‡	FIXTURE LOCATION DESCRIPTION‡	DESCRIPTION‡	USE‡	LEAD SAMPLE RESULT (ppb)
Maryland School for the Deaf - Frederick Campus	101 Clarke Place	Frederick	Faucet, Cold	Bathroom	Group Bathroom	Fixture Labeled with Fixture Code	CO	397.00
Maryland School for the Deaf - Frederick Campus	101 Clarke Place	Frederick	Faucet, Cold	Bathroom	Group Bathroom	Fixture Labeled with Fixture Code	CO	707.00
Maryland School for the Deaf - Frederick Campus	101 Clarke Place	Frederick	Faucet, Cold	Bathroom	Group Bathroom	Fixture Labeled with Fixture Code	CO	1022.00
Maryland School for the Deaf - Frederick Campus	101 Clarke Place	Frederick	Faucet, Cold	Bathroom	Group Bathroom	Fixture Labeled with Fixture Code	CO	337.00
Maryland School for the Deaf - Frederick Campus	101 Clarke Place	Frederick	Faucet, Cold	Bathroom	Group Bathroom	Fixture Labeled with Fixture Code	CO	365.00
Maryland School for the Deaf - Frederick Campus	101 Clarke Place	Frederick	Faucet, Cold	Bathroom	Group Bathroom	Fixture Labeled with Fixture Code	CO	1288.00
Maryland School for the Deaf - Frederick Campus	101 Clarke Place	Frederick	Faucet, Cold	Bathroom	Group Bathroom	Fixture Labeled with Fixture Code	CO	747.00
Maryland School for the Deaf - Frederick Campus	101 Clarke Place	Frederick	Faucet, Cold	Bathroom	Group Bathroom	Fixture Labeled with Fixture Code	CO	353.00
Maryland School for the Deaf - Frederick Campus	101 Clarke Place	Frederick	Faucet, Cold	Bathroom	Group Bathroom	Fixture Labeled with Fixture Code	CO	163.00
Maryland School for the Deaf - Frederick Campus	101 Clarke Place	Frederick	Faucet, Cold	Bathroom	Group Bathroom	Fixture Labeled with Fixture Code	CO	92.20
Maryland School for the Deaf - Frederick Campus	101 Clarke Place	Frederick	Faucet, Cold	Bathroom	Group Bathroom	Fixture Labeled with Fixture Code	CO	524.00

Appendix F: Table 10. Lead Samples Above Previous Action Level of 20 ppb (through May 31, 2021) - Public Schools - Period Between July 2, 2020, and July 1, 2021

‡As reported by school

SCHOOL NAME	SCHOOL ADDRESS	CITY	FIXTURE TYPE‡	FIXTURE AREA TYPE‡	FIXTURE LOCATION DESCRIPTION‡	DESCRIPTION‡	USE‡	LEAD SAMPLE RESULT (ppb)
Maryland School for the Deaf - Frederick Campus	101 Clarke Place	Frederick	Faucet, Cold	Bathroom	Group Bathroom	Fixture Labeled with Fixture Code	CO	349.00
Maryland School for the Deaf - Frederick Campus	101 Clarke Place	Frederick	Faucet, Cold	Bathroom	Group Bathroom	Fixture Labeled with Fixture Code	CO	776.00
Maryland School for the Deaf - Frederick Campus	101 Clarke Place	Frederick	Faucet, Cold	Bathroom	Group Bathroom	Fixture Labeled with Fixture Code	CO	247.00
Maryland School for the Deaf - Frederick Campus	101 Clarke Place	Frederick	Faucet, Cold	Bathroom	Group Bathroom	Fixture Labeled with Fixture Code	CO	47.90
Maryland School for the Deaf - Frederick Campus	101 Clarke Place	Frederick	Faucet, Cold	Bathroom	Group Bathroom	Fixture Labeled with Fixture Code	CO	1198.00
Maryland School for the Deaf - Frederick Campus	101 Clarke Place	Frederick	Faucet, Cold	Bathroom	Room 2B	Fixture Labeled with Fixture Code	CO	217.00
Maryland School for the Deaf - Frederick Campus	101 Clarke Place	Frederick	Faucet, Cold	Bathroom	Room 2B	Fixture Labeled with Fixture Code	CO	3470.00
Maryland School for the Deaf - Frederick Campus	101 Clarke Place	Frederick	Faucet, Cold	Bathroom	Room 3A	Fixture Labeled with Fixture Code	CO	246.00
Maryland School for the Deaf - Frederick Campus	101 Clarke Place	Frederick	Faucet, Cold	Bathroom	Room 3B	Fixture Labeled with Fixture Code	CO	29.60
Maryland School for the Deaf - Frederick Campus	101 Clarke Place	Frederick	Faucet, Cold	Bathroom	Room 3B	Fixture Labeled with Fixture Code	CO	50.80
Maryland School for the Deaf - Frederick Campus	101 Clarke Place	Frederick	Faucet, Cold	Bathroom	Room 1A	Fixture Labeled with Fixture Code	CO	40.30

Appendix F: Table 10. Lead Samples Above Previous Action Level of 20 ppb (through May 31, 2021) - Public Schools - Period Between July 2, 2020, and July 1, 2021

‡As reported by school

SCHOOL NAME	SCHOOL ADDRESS	CITY	FIXTURE TYPE‡	FIXTURE AREA TYPE‡	FIXTURE LOCATION DESCRIPTION‡	DESCRIPTION‡	USE‡	LEAD SAMPLE RESULT (ppb)
Maryland School for the Deaf - Frederick Campus	101 Clarke Place	Frederick	Faucet, Cold	Bathroom	bed/bath	Fixture Labeled with Fixture Code	CO	138.00
Maryland School for the Deaf - Frederick Campus	101 Clarke Place	Frederick	Faucet, Cold	Bathroom	bed/bath	Fixture Labeled with Fixture Code	CO	59.30
Maryland School for the Deaf - Frederick Campus	101 Clarke Place	Frederick	Faucet, Cold	Cafeteria	Kitchen	Fixture Labeled with Fixture Code	CO	68.50
Maryland School for the Deaf - Frederick Campus	101 Clarke Place	Frederick	Faucet, Cold	Cafeteria	Serving Line	Fixture Labeled with Fixture Code	CO	136.00
Maryland School for the Deaf - Frederick Campus	101 Clarke Place	Frederick	Faucet, Cold	Cafeteria	Dining Room	Fixture Labeled with Fixture Code	CO	74.10
Maryland School for the Deaf - Frederick Campus	101 Clarke Place	Frederick	Faucet, Cold	Classroom	Room 07	Fixture Labeled with Fixture Code	CO	29.30
Maryland School for the Deaf - Frederick Campus	101 Clarke Place	Frederick	Faucet, Cold	Classroom	Room 135	Fixture Labeled with Fixture Code	CO	20.80
Maryland School for the Deaf - Frederick Campus	101 Clarke Place	Frederick	Faucet, Cold	Classroom	Room F107-Family Education	Fixture Labeled with Fixture Code	CO	20.60
Maryland School for the Deaf - Frederick Campus	101 Clarke Place	Frederick	Faucet, Cold	Classroom	Room F124-Family Education	Fixture Labeled with Fixture Code	CO	160.00
Maryland School for the Deaf - Frederick Campus	101 Clarke Place	Frederick	Faucet, Cold	Classroom	Room 17B	Fixture Labeled with Fixture Code	CO	478.00
Maryland School for the Deaf - Frederick Campus	101 Clarke Place	Frederick	Faucet, Cold	Concessions	Concession Area	Fixture Labeled with Fixture Code	CO	111.00

Appendix F: Table 10. Lead Samples Above Previous Action Level of 20 ppb (through May 31, 2021) - Public Schools - Period Between July 2, 2020, and July 1, 2021

‡As reported by school

SCHOOL NAME	SCHOOL ADDRESS	CITY	FIXTURE TYPE‡	FIXTURE AREA TYPE‡	FIXTURE LOCATION DESCRIPTION‡	DESCRIPTION‡	USE‡	LEAD SAMPLE RESULT (ppb)
Maryland School for the Deaf - Frederick Campus	101 Clarke Place	Frederick	Faucet, Cold	Kitchen	Kitchen	Fixture Labeled with Fixture Code	CO	32.70
Maryland School for the Deaf - Frederick Campus	101 Clarke Place	Frederick	Faucet, Cold	Kitchen	Kitchen	Fixture Labeled with Fixture Code	CO	39.70
Maryland School for the Deaf - Frederick Campus	101 Clarke Place	Frederick	Faucet, Cold	Kitchen	Kitchen	Fixture Labeled with Fixture Code	CO	43.00
Maryland School for the Deaf - Frederick Campus	101 Clarke Place	Frederick	Faucet, Cold	Kitchen	Kitchen	Fixture Labeled with Fixture Code	CO	93.80
Maryland School for the Deaf - Frederick Campus	101 Clarke Place	Frederick	Faucet, Cold	Kitchen	Kitchen	Fixture Labeled with Fixture Code	CO	208.00
Maryland School for the Deaf - Frederick Campus	101 Clarke Place	Frederick	Faucet, Cold	Kitchen	Dish Washing Area	Fixture Labeled with Fixture Code	CO	31.30
Maryland School for the Deaf - Frederick Campus	101 Clarke Place	Frederick	Faucet, Cold	Kitchen	Dish Washing Area	Fixture Labeled with Fixture Code	CO	46.20
Maryland School for the Deaf - Frederick Campus	101 Clarke Place	Frederick	Faucet, Cold	Kitchen	Dish Washing Area	Fixture Labeled with Fixture Code	CO	63.50
Maryland School for the Deaf - Frederick Campus	101 Clarke Place	Frederick	Faucet, Cold	Workroom	Room 201	Fixture Labeled with Fixture Code	CO	50.90
Maryland School for the Deaf - Frederick Campus	101 Clarke Place	Frederick	Faucet, Cold	Nurse's Office/Health Room	Health Center Room S145	Fixture Labeled with Fixture Code	CO	35.90
Maryland School for the Deaf - Frederick Campus	101 Clarke Place	Frederick	Faucet, Cold	Training Room	Trainers Room	Fixture Labeled with Fixture Code	CO	174.00

Appendix F: Table 10. Lead Samples Above Previous Action Level of 20 ppb (through May 31, 2021) - Public Schools - Period Between July 2, 2020, and July 1, 2021

‡As reported by school

Table 11. Lead Samples Above Previous Action Level of 20 ppb (through May 31, 2021) - Charter Schools

SCHOOL NAME	SCHOOL ADDRESS	CITY	FIXTURE TYPE‡	FIXTURE AREA TYPE‡	FIXTURE LOCATION DESCRIPTION‡	DESCRIPTION‡	USE‡	LEAD SAMPLE RESULT (ppb)
NO DATA								

[This page intentionally left blank]

Table 12. Lead Samples Above Previous Action Level of 20 ppb (through May 31, 2021) - Nonpublic Schools

SCHOOL NAME	SCHOOL ADDRESS	CITY	FIXTURE TYPE‡	FIXTURE AREA TYPE‡	FIXTURE LOCATION DESCRIPTION‡	DESCRIPTION‡	USE‡	LEAD SAMPLE RESULT (ppb)
BALTIMORE COUNTY								
Baltimore School of Independent Learners	11400 Cronridge Drive, Suite H	Owings Mills	Faucet, Cold	Kitchen	Kitchen	Kitchen Sink - 1st Floor	CO	33.30
Emmanuel Lutheran School	929 Ingleside Avenue	Baltimore	Faucet, Cold	Kitchen	north wall of kit	single faucet	NC	23.50
MONTGOMERY COUNTY								
Bullis School	10601 Falls Road	Potomac	Drinking Water Fountain - Bubbler Style	Hallway	Hallway Fountain	Bottom of main stair	CO	25.00
Bullis School	10601 Falls Road	Potomac	Faucet, Cold	Bathroom	1st Floor Women's Sink B	Center left sink	NC	28.00
Bullis School	10601 Falls Road	Potomac	Faucet, Cold	Bathroom	2nd Floor Men's Sink D	Far right sink	NC	22.00
Bullis School	10601 Falls Road	Potomac	Faucet, Cold	Bathroom	3rd Floor Women's Sink A	Far left sink	NC	36.00
Bullis School	10601 Falls Road	Potomac	Faucet, Cold	Bathroom	Men's room Sink	Right wall	NC	26.00
Bullis School	10601 Falls Road	Potomac	Faucet, Cold	Bathroom	Staff Bathroom sink	Back wall	NC	34.00
Bullis School	10601 Falls Road	Potomac	Faucet, Cold	Training Room	Trainer's Room Ice Maker	Right front corner	CO	140.00
Bullis School	10601 Falls Road	Potomac	Faucet, Cold	Classroom (Photo Lab/Dark Room)	Room 212 Sink	Front wall counter	NC	35.00
Bullis School	10601 Falls Road	Potomac	Utility Sink Faucet, Cold	Concessions	Concession Sink	Sink on back wall	NC	21.00
Covenant Life School	7501 Muncaster Mill Road	Gaithersburg	Faucet, Cold	Classroom	CR 242 Classroom	Counter Sink	NC	27.30
McLean School of Maryland, The	8224 Lochinver Lane	Potomac	Faucet, Cold	Classroom	Room 302 sink F	Room 302 sink F	NC	34.00
McLean School of Maryland, The	8224 Lochinver Lane	Potomac	Faucet, Cold	Classroom	Room 302 sink F	Room 302 sink F	NC	38.00

SCHOOL NAME	SCHOOL ADDRESS	CITY	FIXTURE TYPE‡	FIXTURE AREA TYPE‡	FIXTURE LOCATION DESCRIPTION‡	DESCRIPTION‡	USE‡	LEAD SAMPLE RESULT (ppb)
McLean School of Maryland, The	8224 Lochinver Lane	Potomac	Faucet, Cold	Classroom	Room 114 combination sink	Room 114 combination sink	NC	25.00
McLean School of Maryland, The	8224 Lochinver Lane	Potomac	Faucet, Cold	Classroom	Room 114 combination sink	Room 114 combination sink	NC	45.00
Our Lady of Good Counsel High School	17301 Old Vic Boulevard	Olney	Faucet, Cold	Concessions	Faucet	Concession Hand Sink	NC	23.10
Our Lady of Good Counsel High School	17301 Old Vic Boulevard	Olney	Faucet, Cold	Classroom (Science Lab)	Science Lab - Faucet	Teacher Desk - Science Lab	NC	40.10
Our Lady of Good Counsel High School	17301 Old Vic Boulevard	Olney	Faucet, Cold	Classroom (Science Lab)	223 Science Lab Faucet	Faucet in Classroom	NC	25.20
Our Lady of Good Counsel High School	17301 Old Vic Boulevard	Olney	Faucet, Cold	Classroom (Science Lab)	223 Science Lab Faucet	Faucet in Classroom	NC	27.00
Our Lady of Good Counsel High School	17301 Old Vic Boulevard	Olney	Faucet, Cold	Classroom (Science Lab)	Classroom Lab Faucet	219 Lab sink	NC	49.90
Sidwell Friends School - Lower School	5100 Edgemoor Lane	Bethesda	Faucet, Cold	Workroom	Math Workroom Sink/Faucet A	Math Workroom Sink A	NC	290.00
Sidwell Friends School - Lower School	5100 Edgemoor Lane	Bethesda	Faucet, Cold	Workroom	Math Workroom Sink/Faucet C	Math Workroom Sink C	NC	48.00
PRINCE GEORGE'S COUNTY								
College Park Nursery School	4512 College Avenue	College Park	Drinking Water Fountain - Bubbler Style	Classroom	Room B - Ann's Room	Fountain	CO	26.00

Appendix F: Table 12. Lead Samples Above Previous Action Level of 20 ppb (through May 31, 2021) - Nonpublic Schools - Period Between July 2, 2020, and July 1, 2021

‡As reported by school

APPENDIX G

Table 13. Waiver Applications Received, Reporting Period Between
July 2, 2020, and July 1, 2021

[This page intentionally left blank]

Table 13. Waivers - Public, Charter, and Nonpublic Schools

COUNTY	SCHOOL TYPE	SCHOOL NAME	SCHOOL STREET ADDRESS	CITY	ZIP	BUILDING NAME/ID	WAIVER TYPE	WAIVER STATUS as of July 1, 2021
Baltimore County	Nonpublic	Harbour School At Baltimore	11251 Dolfield Blvd.	Owings Mills	21117	Harbour School at Baltimore	PRIOR TESTING/ALL RESULTS ≤ 5 ppb	UNDER REVIEW
Baltimore County	Nonpublic	Havenwood Preschool Center	100 E. Ridgely Rd.	Timonium	21093	Havenwood Church and Preschool	PRIOR TESTING/ALL RESULTS ≤ 5 ppb	UNDER REVIEW
Baltimore County	Nonpublic	Hunt's Church Preschool	1912-A Old Court Rd	Towson	21204	Hunt's Church Preschool--Facil. No. 255787	BOTTLED WATER	APPROVED
Baltimore County	Nonpublic	Israel Henry Beren HS	400 Mt. Wilson Ln.	Baltimore	21208	Sindler Dining Hall	LEAD-FREE BUILDING	APPROVED
Baltimore County	Nonpublic	Israel Henry Beren HS	400 Mt. Wilson Ln.	Baltimore	21208	Hurwitz Educ	PRIOR TESTING/ALL RESULTS ≤ 5 ppb	UNDER REVIEW
Baltimore County	Nonpublic	Israel Henry Beren HS	400 Mt. Wilson Ln.	Baltimore	21208	Kolker Dorm	PRIOR TESTING/ALL RESULTS ≤ 5 ppb	UNDER REVIEW
Baltimore County	Nonpublic	Israel Henry Beren HS	400 Mt. Wilson Ln.	Baltimore	21208	Schottstein Dorm	PRIOR TESTING/ALL RESULTS ≤ 5 ppb	UNDER REVIEW
Baltimore County	Nonpublic	Israel Henry Beren HS	400 Mt. Wilson Ln.	Baltimore	21208	Schwartz Beis Medrash	PRIOR TESTING/ALL RESULTS ≤ 5 ppb	UNDER REVIEW
Baltimore County	Nonpublic	Mount De Sales High School	700 Academy Rd.	Catonsville	21228	Mount De Sales High School	PRIOR TESTING/ALL RESULTS ≤ 5 ppb	UNDER REVIEW
Baltimore County	Nonpublic	Shafer Center For Early Intervention	11500 Cronridge Dr. Ste. 130	Owings Mills	21117	Shafer Center for Early Intervention, Stes. 130-136	PRIOR TESTING/ALL RESULTS ≤ 5 ppb	UNDER REVIEW
Baltimore County	Nonpublic	St. John's Preschool Program	8808 Harford Road	Baltimore	21234	St. John's Preschool Program	PRIOR TESTING/ALL RESULTS ≤ 5 ppb	UNDER REVIEW
Baltimore City	Public	Dept. Juvenile Services - Baltimore City Juvenile Justice Center	300 N. Gay St.	Baltimore	21202	Dept. Juvenile Services - Baltimore City Juvenile Justice Center	PRIOR TESTING/ALL RESULTS ≤ 5 ppb	APPROVED
Baltimore City	Public	Dept. Juvenile Services - J. Deweese Carter Center	300 Scheeler Rd.	Chestertown	21620	J. Deweese Carter Center for Women	PRIOR TESTING/ALL RESULTS ≤ 5 ppb	APPROVED
Baltimore City	Public	Dept. Juvenile Services - Lower Eastern Shore Children'S Center	405 W. Naylor Mill Rd.	Salisbury	21801	DJS L.E.S. CC Education Space	PRIOR TESTING/ALL RESULTS ≤ 5 ppb	APPROVED
Baltimore City	Nonpublic	A Child's Place, Notre Dame U.	4701 N. Charles St.	Baltimore	21210	LeClerc	BOTTLED WATER	APPROVED

COUNTY	SCHOOL TYPE	SCHOOL NAME	SCHOOL STREET ADDRESS	CITY	ZIP	BUILDING NAME/ID	WAIVER TYPE	WAIVER STATUS as of July 1, 2021
Baltimore City	Nonpublic	Arts and Ideas Sudbury School	4915 Holder Avenue	Baltimore	21214	Arts and Ideas Sudbury School	PRIOR TESTING/ALL RESULTS ≤ 5 ppb	APPROVED
Baltimore City	Nonpublic	JEWELS School	31 Walker Ave	Baltimore	21208	JEWELS School	LEAD-FREE BUILDING	APPROVED
Baltimore City	Nonpublic	St. Ignatius Loyola Academy	300 E. Gittings St.	Baltimore	21230	St. Ignatius Loyola Academy	PRIOR TESTING/ALL RESULTS ≤ 5 ppb	UNDER REVIEW
Baltimore City	Charter	Baltimore Montessori Public Charter	1600 Guilford Avenue	Baltimore	21202	#336	BOTTLED WATER	UNDER REVIEW
Caroline	Public	Denton ES	303 Sharp Rd.	Denton	21629	05.0301	PRIOR TESTING/ALL RESULTS ≤ 5 ppb	UNDER REVIEW
Caroline	Public	Federalsburg ES	302 S University Ave.	Federalsburg	21632	05.0501	PRIOR TESTING/ALL RESULTS ≤ 5 ppb	UNDER REVIEW
Caroline	Public	Lockerman MS	410 Lockerman St.	Denton	21629	05.0302	PRIOR TESTING/ALL RESULTS ≤ 5 ppb	UNDER REVIEW
Caroline	Public	Preston ES	225 Main St.	Preston	21655	05.0401	PRIOR TESTING/ALL RESULTS ≤ 5 ppb	UNDER REVIEW
Caroline	Public	Ridgely ES	118 North Central Av.	Ridgely	21660	05.0701	PRIOR TESTING/ALL RESULTS ≤ 5 ppb	UNDER REVIEW
Cecil	Public	Perryville Elementary	901 Maywood Ave.	Perryville	21903	2923	PRIOR TESTING/ALL RESULTS ≤ 5 ppb	APPROVED
Cecil	Nonpublic	Good Shepherd Catholic School	800 Aiken Ave.	Perryville	21903	Good Shepherd Catholic School	PRIOR TESTING/ALL RESULTS ≤ 5 ppb	UNDER REVIEW
Frederick	Nonpublic	Laurel Hall School In Frederick	4540 B Mack Av.	Frederick	21703	Laurel Hall School	PRIOR TESTING/ALL RESULTS ≤ 5 ppb	UNDER REVIEW
Harford	Nonpublic	Harford Day	715 Moores Mill Rd	Bel Air	21014	Main/Middle/Kindergarten	PRIOR TESTING/ALL RESULTS ≤ 5 ppb	APPROVED
Howard	Nonpublic	High Road Academy of Howard County	9705 Washington Blvd.	Laurel-Lanham	20723	High Road Academy of Howard County	BOTTLED WATER	UNDER REVIEW
Howard	Nonpublic	Mt. Hebron Nursery School	2330 Mt. Hebron Dr.	Ellicott City	21042	Mt. Hebron Nursery School	PRIOR TESTING/ALL RESULTS ≤ 5 ppb	UNDER REVIEW
Howard	Nonpublic	Northcrest Montessori	12345 Wake Forest Rd	Clarksville	21029	Northcrest Montessori	BOTTLED WATER	UNDER REVIEW
Kent	Nonpublic	Radcliffe Creek School	201 Talbot Blvd	Chestertown	21620	Radcliffe Creek School	PRIOR TESTING/ALL RESULTS ≤ 5 ppb	APPROVED
Montgomery	Nonpublic	Avalon School	11811 Claridge Rd.	Wheaton	20902	Saint Catherine Laboure School Building	PRIOR TESTING/ALL RESULTS ≤ 5 ppb	UNDER REVIEW

Appendix G: Table 13. Waivers - Public, Charter, and Nonpublic Schools - Period Between July 2, 2020, and July 1, 2021

COUNTY	SCHOOL TYPE	SCHOOL NAME	SCHOOL STREET ADDRESS	CITY	ZIP	BUILDING NAME/ID	WAIVER TYPE	WAIVER STATUS as of July 1, 2021
Montgomery	Nonpublic	Brookewood School	10401 Armory Ave.	Brookewood	20895	Brookewood	PRIOR TESTING/ALL RESULTS \leq 5 ppb	UNDER REVIEW
Montgomery	Nonpublic	Family Academy of Bethesda	4330 Montgomery Avenue	Bethesda	20814	Family Academy of Bethesda	PRIOR TESTING/ALL RESULTS \leq 5 ppb	UNDER REVIEW
Montgomery	Nonpublic	Fernwood Montessori School	10100 Old Georgetown Road	Bethesda	20814	Fernwood Montessori School	PRIOR TESTING/ALL RESULTS \leq 5 ppb	UNDER REVIEW
Montgomery	Nonpublic	Living Grace Christian School	20300 Pleasant Ridge Dr.	Montgomery Village	20866	Living Grace Christian School Building	PRIOR TESTING/ALL RESULTS \leq 5 ppb	APPROVED
Montgomery	Nonpublic	Potomac Glen Day School	7720 Fontaine St.	Rockville	20854	Parish House	PRIOR TESTING/ALL RESULTS \leq 5 ppb	UNDER REVIEW
Montgomery	Nonpublic	St. Johns Episcopal School	3427 Olney-Laytonsville Road	Olney	20832	St. Johns Episcopal School	PRIOR TESTING/ALL RESULTS \leq 5 ppb	UNDER REVIEW
Montgomery	Nonpublic	St. Jude Catholic School	4820 Walbridge St.	Rockville	20853	Main Building /#1	PRIOR TESTING/ALL RESULTS \leq 5 ppb	UNDER REVIEW
Montgomery	Nonpublic	The Academy of the Holy Cross	4920 Strathmore Ave.	Kensington	20895	Main/Moreau Hall	PRIOR TESTING/ALL RESULTS \leq 5 ppb	UNDER REVIEW
Montgomery	Nonpublic	Village Montessori School, LLC	20301 Fulks Farm Road	Montgomery Village	20866	Village Montessori School, LLC	PRIOR TESTING/ALL RESULTS \leq 5 ppb	UNDER REVIEW
Prince George's	Nonpublic	Grace Brethren Christian School	6501 Surratts Rd.	Clinton	20735	Grace Brethren Christian School	PRIOR TESTING/ALL RESULTS \leq 5 ppb	UNDER REVIEW
Prince George's	Nonpublic	High Road Academy of Prince Georges County	5100 Philadelphia Way	Lanham	20706	High Road Academy of Prince Georges County	BOTTLED WATER	UNDER REVIEW
Prince George's	Nonpublic	High Road School of Prince Georges County--Suite M/Upper School	9701 Philadelphia Ct., Suite M	Lanham	20706	High Road School of Prince Georges County--Suite M/Upper School	BOTTLED WATER	UNDER REVIEW
Prince George's	Nonpublic	High Road School of Prince Georges County--Suite P/Lower School	9701 Philadelphia Ct., Suite P	Lanham	20706	High Road School of Prince Georges County--Suite P/Lower School	BOTTLED WATER	UNDER REVIEW
St. Mary's	Charter	Chesapeake Public Charter School	20945 Great Mills Rd	Lexington Park	20653	Chesapeake Public Charter School #813	PRIOR TESTING/ALL RESULTS \leq 5 ppb	APPROVED

Appendix G: Table 13. Waivers - Public, Charter, and Nonpublic Schools - Period Between July 2, 2020, and July 1, 2021

COUNTY	SCHOOL TYPE	SCHOOL NAME	SCHOOL STREET ADDRESS	CITY	ZIP	BUILDING NAME/ID	WAIVER TYPE	WAIVER STATUS as of July 1, 2021
Wicomico	Public	Choices Academy	502 Calloway St.	Salisbury	21801	Choices Academy	PRIOR TESTING/ALL RESULTS \leq 5 ppb	APPROVED
Wicomico	Public	Delmar ES	811 S. 2Nd St.	Delmar	21875	Delmar ES	PRIOR TESTING/ALL RESULTS \leq 5 ppb	APPROVED
Wicomico	Public	East Salisbury ES	1201 Old Ocean City Rd.	Salisbury	21804	East Salisbury ES	PRIOR TESTING/ALL RESULTS \leq 5 ppb	APPROVED
Wicomico	Public	Fruitland Intermediate School	208 W. Main St.	Salisbury	21826	Fruitland Intermediate School	PRIOR TESTING/ALL RESULTS \leq 5 ppb	APPROVED
Wicomico	Public	Glen Avenue ES	1615 Glen Avenue Ext.	Salisbury	21804	Glen Avenue ES	PRIOR TESTING/ALL RESULTS \leq 5 ppb	APPROVED
Wicomico	Public	J.M. Bennett HS	300 E. College Ave.	Salisbury	21804	J.M. Bennett HS	PRIOR TESTING/ALL RESULTS \leq 5 ppb	APPROVED
Wicomico	Public	New Bennett MS	532 S. Division St.	Fruitland	21826	New Bennett MS	PRIOR TESTING/ALL RESULTS \leq 5 ppb	APPROVED
Wicomico	Public	North Salisbury ES	1213 Emerson Ave.	Salisbury	21801	North Salisbury ES	PRIOR TESTING/ALL RESULTS \leq 5 ppb	APPROVED
Wicomico	Public	Parkside HS	1015 Beaglin Park Dr.	Salisbury	21804	Parkside HS	PRIOR TESTING/ALL RESULTS \leq 5 ppb	UNDER REVIEW
Wicomico	Public	Pemberton ES	1300 Pemberton Dr.	Salisbury	21801	Pemberton ES	PRIOR TESTING/ALL RESULTS \leq 5 ppb	APPROVED
Wicomico	Public	Prince St. ES	400 Prince St.	Salisbury	21804	Prince St. ES	PRIOR TESTING/ALL RESULTS \leq 5 ppb	APPROVED
Wicomico	Public	Salisbury MS	607 Morris St.	Salisbury	21801	Salisbury MS	PRIOR TESTING/ALL RESULTS \leq 5 ppb	APPROVED
Wicomico	Public	West Salisbury ES	1321 West Rd.	Salisbury	21801	West Salisbury ES	PRIOR TESTING/ALL RESULTS \leq 5 ppb	APPROVED
Wicomico	Public	Westside Intermediate	8000 Quantico Rd.	Hebron	21830	Westside Intermediate	PRIOR TESTING/ALL RESULTS \leq 5 ppb	APPROVED
Wicomico	Public	Wicomico Early Learning Center	1101 Robert St.	Salisbury	21804	Wicomico Early Learning Center	PRIOR TESTING/ALL RESULTS \leq 5 ppb	APPROVED
Wicomico	Public	Wicomico Middle School	635 E. Main St.	Salisbury	21804	Wicomico Middle School	PRIOR TESTING/ALL RESULTS \leq 5 ppb	APPROVED
Worcester	Public	Showell ES	11318 Showell School Rd.	Berlin	21811	Showell ES	LEAD-FREE BUILDING	UNDER REVIEW

Appendix G: Table 13. Waivers - Public, Charter, and Nonpublic Schools - Period Between July 2, 2020, and July 1, 2021

APPENDIX H

Tables 14-16. Schools Conducted Lead Testing and Elevated Lead
Levels, Previous Reporting Period
Between July 2, 2019, and July 1, 2020

[This page intentionally left blank]

Table 14. Schools Conducted Lead Testing - Previous Reporting Period Between July 2, 2019, and July 1, 2020*****

SCHOOL NAME	SCHOOL STREET ADDRESS	CITY	ZIP	SCHOOL TYPE	ANY LEAD RESULTS EXCEEDING...	
					...PREVIOUS ACTION LEVEL OF 20 PPB (EFFECTIVE THROUGH MAY 31, 2021)?	...CURRENT ACTION LEVEL OF 5 PPB (EFFECTIVE ON JUNE 1, 2021)?
ALLEGANY COUNTY						
NO DATA						
ANNE ARUNDEL COUNTY						
NO DATA						
BALTIMORE CITY						
NO DATA						
BALTIMORE COUNTY						
Strawbridge School, The	3300 Gaither Road	Baltimore	21244	Nonpublic	*	*
Trellis School, The	14450 York Road, Suite A	Sparks	21152	Nonpublic	No	Yes
CALVERT COUNTY						
NO DATA						
CAROLINE COUNTY						
NO DATA						
CARROLL COUNTY						
NO DATA						
CECIL COUNTY						
NO DATA						
CHARLES COUNTY						
NO DATA						
DORCHESTER COUNTY						
NO DATA						

Appendix H: Table 14. Schools Conducted Lead Testing - Previous Reporting Period Between July 2, 2019, and July 1, 2020

*Data verification in progress / Insufficient documentation

**Schools with some samples that need further verification / required documentation (Note: only samples that have been verified are included in this report)

***Schools with first-draw and flushed samples

****Includes some samples with improper protocol

*****Results made available to MDE after submittal deadline

SCHOOL NAME	SCHOOL STREET ADDRESS	CITY	ZIP	SCHOOL TYPE	ANY LEAD RESULTS EXCEEDING...	
					...PREVIOUS ACTION LEVEL OF 20 PPB (EFFECTIVE THROUGH MAY 31, 2021)?	...CURRENT ACTION LEVEL OF 5 PPB (EFFECTIVE ON JUNE 1, 2021)?
FREDERICK COUNTY						
The Banner School	1730 North Market Street	Frederick	21701	Nonpublic	*	*
GARRETT COUNTY						
NO DATA						
HARFORD COUNTY						
NO DATA						
HOWARD COUNTY						
NO DATA						
KENT COUNTY						
NO DATA						
MONTGOMERY COUNTY						
NO DATA						
PRINCE GEORGE'S COUNTY						
NO DATA						
QUEEN ANNE'S COUNTY						
NO DATA						
ST. MARY'S COUNTY						
NO DATA						
SOMERSET COUNTY						
NO DATA						
TALBOT COUNTY						
NO DATA						

Appendix H: Table 14. Schools Conducted Lead Testing - Previous Reporting Period Between July 2, 2019, and July 1, 2020

*Data verification in progress / Insufficient documentation

**Schools with some samples that need further verification / required documentation (Note: only samples that have been verified are included in this report)

***Schools with first-draw and flushed samples

****Includes some samples with improper protocol

*****Results made available to MDE after submittal deadline

SCHOOL NAME	SCHOOL STREET ADDRESS	CITY	ZIP	SCHOOL TYPE	ANY LEAD RESULTS EXCEEDING...	
					...PREVIOUS ACTION LEVEL OF 20 PPB (EFFECTIVE THROUGH MAY 31, 2021)?	...CURRENT ACTION LEVEL OF 5 PPB (EFFECTIVE ON JUNE 1, 2021)?
WASHINGTON COUNTY						
NO DATA						
WICOMICO COUNTY						
Delmar Elementary	811 South 2nd Street	Delmar	21875	Public	No	No
Fruitland Intermediate	208 West Main Street	Fruitland	21826	Public	No	Yes
Fruitland Primary	301 North Division Street	Fruitland	21826	Public	No	Yes
Glen Avenue Elementary	1615 Glen Avenue Ext	Salisbury	21804	Public	No	No
James M. Bennett High	300 East College Avenue	Salisbury	21804	Public	No **	No **
North Salisbury Elementary	1213 Emerson Avenue	Salisbury	21801	Public	Yes	Yes
Pemberton Elementary	1300 Pemberton Drive	Salisbury	21801	Public	No	No
Pinehurst Elementary	520 South Pinehurst Avenue	Salisbury	21801	Public	No	Yes
Salisbury Middle	607 Morris Street	Salisbury	21801	Public	No	No
Westside Intermediate	8000 Quantico Road	Hebron	21830	Public	No	No
Wicomico Middle	635 East Main Street	Salisbury	21804	Public	No	No
WORCESTER COUNTY						
NO DATA						

Appendix H: Table 14. Schools Conducted Lead Testing - Previous Reporting Period Between July 2, 2019, and July 1, 2020

*Data verification in progress / Insufficient documentation

**Schools with some samples that need further verification / required documentation (Note: only samples that have been verified are included in this report)

***Schools with first-draw and flushed samples

****Includes some samples with improper protocol

*****Results made available to MDE after submittal deadline

[This page intentionally left blank]

Table 15. Lead Samples Above Current Action Level of 5 ppb (Effective on June 1, 2021, and applied retroactively) and Below Previous Action Level of 20 ppb (through May 31, 2021) - Previous Reporting Period Between July 2, 2019, and July 1, 2020**

SCHOOL NAME	SCHOOL ADDRESS	CITY	SCHOOL TYPE	FIXTURE TYPE‡	FIXTURE AREA TYPE‡	FIXTURE LOCATION DESCRIPTION‡	DESCRIPTION‡	USE‡	LEAD SAMPLE RESULT (ppb)
BALTIMORE COUNTY									
Trellis School, The	14450 York Road, Suite A	Sparks	Nonpublic	Faucet, Cold	Kitchen	staff kitchen by nurse's office	faucet	NC	7.40
Trellis School, The	14450 York Road, Suite A	Sparks	Nonpublic	Drinking Water Fountain - Cooler/Chiller Style	Cafeteria	water cooler in T2 in dining hall	hot and cold water cooler	CO	8.20
Trellis School, The	14450 York Road, Suite A	Sparks	Nonpublic	Drinking Water Fountain - Cooler/Chiller Style	Kitchen	water cooler in staff kitchen	hot and cold water cooler	CO	6.70
WICOMICO COUNTY									
Fruitland Intermediate	208 West Main Street	Fruitland	Public	Drinking Water Fountain - Bubbler Style	Classroom	Classroom 70 CF	CF, Floor: 1	CO	5.50
Fruitland Primary	301 North Division Street	Fruitland	Public	Drinking Water Fountain - Bubbler Style	Classroom	Classroom A1 CF	CF, Floor: 1	CO	6.64
Fruitland Primary	301 North Division Street	Fruitland	Public	Drinking Water Fountain - Bubbler Style	Classroom	Classroom A17 CF	CF, Floor: 1	CO	11.20
Fruitland Primary	301 North Division Street	Fruitland	Public	Drinking Water Fountain - Bubbler Style	Classroom	Classroom A35 CF	CF, Floor: 1	CO	10.90
Fruitland Primary	301 North Division Street	Fruitland	Public	Drinking Water Fountain - Bubbler Style	Classroom	Classroom A29 CF	CF, Floor: 1	CO	8.74

Appendix H: Table 15. Lead Samples Above Current Action Level of 5 ppb (Effective on June 1, 2021, and applied retroactively) and Below Previous Action Level of 20 ppb (through May 31, 2021) - Previous Reporting Period Between July 2, 2019, and July 1, 2020

‡As reported by school

**Results made available to MDE after submittal deadline

SCHOOL NAME	SCHOOL ADDRESS	CITY	SCHOOL TYPE	FIXTURE TYPE‡	FIXTURE AREA TYPE‡	FIXTURE LOCATION DESCRIPTION‡	DESCRIPTION‡	USE‡	LEAD SAMPLE RESULT (ppb)
Fruitland Primary	301 North Division Street	Fruitland	Public	Drinking Water Fountain - Bubbler Style	Classroom	Classroom A44 CF	CF, Floor: 1	CO	6.97
Fruitland Primary	301 North Division Street	Fruitland	Public	Drinking Water Fountain - Bubbler Style	Classroom	Classroom A49 CF	CF, Floor: 1	CO	7.38
Fruitland Primary	301 North Division Street	Fruitland	Public	Drinking Water Fountain - Bubbler Style	Classroom	Classroom B37 CF	CF, Floor: 1	CO	8.57
Fruitland Primary	301 North Division Street	Fruitland	Public	Drinking Water Fountain - Bubbler Style	Classroom	Classroom B35 CF	CF, Floor: 1	CO	7.10
Fruitland Primary	301 North Division Street	Fruitland	Public	Drinking Water Fountain - Bubbler Style	Classroom	Classroom A8 CF	CF, Floor: 1	CO	6.10
North Salisbury Elementary	1213 Emerson Avenue	Salisbury	Public	Faucet, Cold	Classroom	Room C-144 Sink with Bubbler	CS, Floor: 1	CO	5.91
Pinehurst Elementary	520 South Pinehurst Avenue	Salisbury	Public	Drinking Water Fountain - Bubbler Style	Classroom	Classroom 103 CF	CF, Floor: 1	CO	11.40
Pinehurst Elementary	520 South Pinehurst Avenue	Salisbury	Public	Drinking Water Fountain - Bubbler Style	Classroom	Classroom W-6 CF	CF, Floor: 1	CO	7.37
Pinehurst Elementary	520 South Pinehurst Avenue	Salisbury	Public	Faucet, Cold	Workroom	Workroom E11 hand sink	CR, Floor: 1	NC	9.87
Pinehurst Elementary	520 South Pinehurst Avenue	Salisbury	Public	Faucet, Cold	Workroom	Workroom 207 Sink	CR, Floor: 2	NC	7.26
Pinehurst Elementary	520 South Pinehurst Avenue	Salisbury	Public	Faucet, Cold	Storage Room/Area	Room 201 sink in storage closet	CR, Floor: 2	CO	11.70

Appendix H: Table 15. Lead Samples Above Current Action Level of 5 ppb (Effective on June 1, 2021, and applied retroactively) and Below Previous Action Level of 20 ppb (through May 31, 2021) - Previous Reporting Period Between July 2, 2019, and July 1, 2020

‡As reported by school

##Results made available to MDE after submittal deadline

Table 16. Lead Samples Above Previous Action Level of 20 ppb (through May 31, 2021) - Previous Reporting Period Between July 2, 2019, and July 1, 2020^{##}

SCHOOL NAME	SCHOOL ADDRESS	CITY	SCHOOL TYPE	FIXTURE TYPE [‡]	FIXTURE AREA TYPE [‡]	FIXTURE LOCATION DESCRIPTION [‡]	DESCRIPTION [‡]	USE [‡]	LEAD SAMPLE RESULT (ppb)
WICOMICO COUNTY									
North Salisbury Elementary	1213 Emerson Avenue	Salisbury	Public	Faucet, Cold	Classroom	Classroom C121 CS	CS, Floor: 1	CO	22.10

Appendix H: Table 16. Lead Samples Above Previous Action Level of 20 ppb (through May 31, 2021) - Previous Reporting Period Between July 2, 2019, and July 1, 2020

[‡]As reported by school

^{##}Results made available to MDE after submittal deadline

[This page intentionally left blank]

APPENDIX I

Tables 17-19. Schools Conducted Lead Testing and Elevated Lead
Levels, Previous Reporting Period
Between July 2, 2018, and July 1, 2019

[This page intentionally left blank]

Table 17. Schools Conducted Lead Testing - Previous Reporting Period Between July 2, 2018, and July 1, 2019*****

SCHOOL NAME	SCHOOL STREET ADDRESS	CITY	ZIP	SCHOOL TYPE	ANY LEAD RESULTS EXCEEDING...	
					...PREVIOUS ACTION LEVEL OF 20 PPB (EFFECTIVE THROUGH MAY 31, 2021)?	...CURRENT ACTION LEVEL OF 5 PPB (EFFECTIVE ON JUNE 1, 2021)?
ALLEGANY COUNTY						
NO DATA						
ANNE ARUNDEL COUNTY						
NO DATA						
BALTIMORE CITY						
NO DATA						
BALTIMORE COUNTY						
NO DATA						
CALVERT COUNTY						
NO DATA						
CAROLINE COUNTY						
NO DATA						
CARROLL COUNTY						
NO DATA						
CECIL COUNTY						
NO DATA						
CHARLES COUNTY						
NO DATA						
DORCHESTER COUNTY						
NO DATA						
FREDERICK COUNTY						
NO DATA						

Appendix I: Table 17. Schools Conducted Lead Testing - Previous Reporting Period Between July 2, 2018, and July 1, 2019

*Data verification in progress / Insufficient documentation

**Schools with some samples that need further verification / required documentation (Note: only samples that have been verified are included in this report)

***Schools with first-draw and flushed samples

****Includes some samples with improper protocol

*****Results made available to MDE after submittal deadline

SCHOOL NAME	SCHOOL STREET ADDRESS	CITY	ZIP	SCHOOL TYPE	ANY LEAD RESULTS EXCEEDING...	
					...PREVIOUS ACTION LEVEL OF 20 PPB (EFFECTIVE THROUGH MAY 31, 2021)?	...CURRENT ACTION LEVEL OF 5 PPB (EFFECTIVE ON JUNE 1, 2021)?
GARRETT COUNTY						
NO DATA						
HARFORD COUNTY						
NO DATA						
HOWARD COUNTY						
NO DATA						
KENT COUNTY						
NO DATA						
MONTGOMERY COUNTY						
NO DATA						
PRINCE GEORGE'S COUNTY						
Cooper Lane Elementary	3817 Cooper Lane	Landover Hills	20784	Public	No	Yes
Samuel Chase Elementary	5700 Fisher Road	Temple Hills	20748	Public	*	*
QUEEN ANNE'S COUNTY						
NO DATA						
ST. MARY'S COUNTY						
NO DATA						
SOMERSET COUNTY						
NO DATA						
TALBOT COUNTY						
Easton Elementary - Dobson Bldg.	305 Glenwood Avenue	Easton	21601	Public	No	No
Easton Elementary - Moton Bldg.	307 Glenwood Avenue	Easton	21601	Public	No	No
Easton High	723 Mecklenburg Avenue	Easton	21601	Public	No	No

Appendix I: Table 17. Schools Conducted Lead Testing - Previous Reporting Period Between July 2, 2018, and July 1, 2019

*Data verification in progress / Insufficient documentation

**Schools with some samples that need further verification / required documentation (Note: only samples that have been verified are included in this report)

***Schools with first-draw and flushed samples

****Includes some samples with improper protocol

*****Results made available to MDE after submittal deadline

SCHOOL NAME	SCHOOL STREET ADDRESS	CITY	ZIP	SCHOOL TYPE	ANY LEAD RESULTS EXCEEDING...	
					...PREVIOUS ACTION LEVEL OF 20 PPB (EFFECTIVE THROUGH MAY 31, 2021)?	...CURRENT ACTION LEVEL OF 5 PPB (EFFECTIVE ON JUNE 1, 2021)?
Easton Middle	201 Peachblossom Road	Easton	21601	Public	No	No
St. Michaels Elementary	100 Seymour Avenue	St. Michaels	21663	Public	No	Yes
St. Michaels Middle/High	200 Seymour Avenue	St. Michaels	21663	Public	No	Yes
White Marsh Elementary	4322 Lovers Lane	Trappe	21673	Public	No	No
WASHINGTON COUNTY						
NO DATA						
WICOMICO COUNTY						
East Salisbury Elementary	1201 Ocean City Road	Salisbury	21804	Public	Yes ***	Yes ***
Pinehurst Elementary	520 South Pinehurst Avenue	Salisbury	21801	Public	Yes ***	Yes ***
Westside Intermediate	8000 Quantico Road	Hebron	21830	Public	No	No
WORCESTER COUNTY						
NO DATA						

Appendix I: Table 17. Schools Conducted Lead Testing - Previous Reporting Period Between July 2, 2018, and July 1, 2019

*Data verification in progress / Insufficient documentation

**Schools with some samples that need further verification / required documentation (Note: only samples that have been verified are included in this report)

***Schools with first-draw and flushed samples

****Includes some samples with improper protocol

*****Results made available to MDE after submittal deadline

[This page intentionally left blank]

Table 18. Lead Samples Above Current Action Level of 5 ppb (Effective on June 1, 2021, and applied retroactively) and Below Previous Action Level of 20 ppb (through May 31, 2021) - Previous Reporting Period Between July 2, 2018, and July 1, 2019**

SCHOOL NAME	SCHOOL ADDRESS	CITY	SCHOOL TYPE	FIXTURE TYPE‡	FIXTURE AREA TYPE‡	FIXTURE LOCATION DESCRIPTION‡	DESCRIPTION‡	USE‡	LEAD SAMPLE RESULT (ppb)
PRINCE GEORGE'S COUNTY									
Cooper Lane Elementary	3817 Cooper Lane	Landover Hills	Public	Faucet, Cold	Nurses Office	hallway	drinking water fountain	CO	18.80
TALBOT COUNTY									
St. Michaels Elementary	100 Seymour Avenue	St. Michaels	Public	Faucet, Cold	Kitchen	Elementary Kitchen		NC	11.40
St. Michaels Middle/High	200 Seymour Avenue	St. Michaels	Public	Faucet, Cold	Nurses Office	Sink in Nurse's Office		NC	8.20
St. Michaels Middle/High	200 Seymour Avenue	St. Michaels	Public	Faucet, Cold	Teachers' Lounge/Break Room	Next to Auditorium		NC	6.50
WICOMICO COUNTY									
East Salisbury Elementary	1201 Ocean City Road	Salisbury	Public	Faucet, Cold	Classroom	Room 14 CS	CS, Floor: 1	CO	7.16
East Salisbury Elementary	1201 Ocean City Road	Salisbury	Public	Faucet, Cold	Classroom	Room 30 sink right	CR, Floor: 1	NC	15.60
Pinehurst Elementary	520 South Pinehurst Avenue	Salisbury	Public	Faucet, Cold	Classroom	Classroom W-9 gooseneck (left)	CR, Floor: 1	NC	8.93
Pinehurst Elementary	520 South Pinehurst Avenue	Salisbury	Public	Faucet, Cold	Classroom	Classroom W-9 gooseneck (right)	CR, Floor: 1	NC	13.00
Pinehurst Elementary	520 South Pinehurst Avenue	Salisbury	Public	Faucet, Cold	Storage Room/Area	Room 201 sink in storage closet	CR, Floor: 2	CO	5.53

Appendix I: Table 18. Lead Samples Above Current Action Level of 5 ppb (Effective on June 1, 2021, and applied retroactively) and Below Previous Action Level of 20 ppb (through May 31, 2021) - Previous Reporting Period Between July 2, 2018, and July 1, 2019

‡As reported by school

**Results made available to MDE after submittal deadline

[This page intentionally left blank]

Table 19. Lead Samples Above Previous Action Level of 20 ppb (through May 31, 2021) - Previous Reporting Period Between July 2, 2018, and July 1, 2019**

SCHOOL NAME	SCHOOL ADDRESS	CITY	SCHOOL TYPE	FIXTURE TYPE‡	FIXTURE AREA TYPE‡	FIXTURE LOCATION DESCRIPTION‡	DESCRIPTION‡	USE‡	LEAD SAMPLE RESULT (ppb)
WICOMICO COUNTY									
East Salisbury Elementary	1201 Ocean City Road	Salisbury	Public	Faucet, Cold	Classroom	Room 14 CS	CS, Floor: 1	CO	23.50
East Salisbury Elementary	1201 Ocean City Road	Salisbury	Public	Faucet, Cold	Classroom	Room 15 CS	CS, Floor: 1	CO	33.00
Pinehurst Elementary	520 South Pinehurst Avenue	Salisbury	Public	Drinking Water Fountain - Bubbler Style	Classroom	Classroom W-6 CF	CF, Floor: 1	CO	29.00
Pinehurst Elementary	520 South Pinehurst Avenue	Salisbury	Public	Faucet, Cold	Classroom	W9 Sink (right)	CR, Floor: 1	NC	41.80

Appendix I: Table 19. Lead Samples Above Previous Action Level of 20 ppb (through May 31, 2021) - Previous Reporting Period Between July 2, 2018, and July 1, 2019

‡As reported by school

**Results made available to MDE after submittal deadline

[This page intentionally left blank]

APPENDIX J

Tables 20 and 21. Schools Conducted Lead Testing and Elevated Lead
Levels, Previous Reporting Period
Between July 2, 2017, and July 1, 2018

[This page intentionally left blank]

Table 20. Schools Conducted Lead Testing - Previous Reporting Period Between July 2, 2017, and July 1, 2018*****

SCHOOL NAME	SCHOOL STREET ADDRESS	CITY	ZIP	SCHOOL TYPE	ANY ELEVATED LEAD RESULTS?
NO DATA					

Appendix J: Table 20. Schools Conducted Lead Testing - Previous Reporting Period Between July 2, 2017, and July 1, 2018

*Data verification in progress / Insufficient documentation

**Schools with some samples that need further verification / required documentation (Note: only samples that have been verified are included in this report)

***Schools with first-draw and flushed samples

****Includes some samples with improper protocol

*****Results made available to MDE after submittal deadline

[This page intentionally left blank]

Table 21. Lead Samples Above Previous Action Level of 20 ppb (through May 31, 2021) - Previous Reporting Period Between July 2, 2017, and July 1, 2018^{##}

SCHOOL NAME	SCHOOL ADDRESS	CITY	SCHOOL TYPE	FIXTURE TYPE [‡]	FIXTURE AREA TYPE [‡]	FIXTURE LOCATION DESCRIPTION [‡]	DESCRIPTION [‡]	USE [‡]	LEAD SAMPLE RESULT (ppb)
NO DATA									

Appendix J: Table 21. Lead Samples Above Previous Action Level of 20 ppb (through May 31, 2021) - Previous Reporting Period Between July 2, 2017, and July 1, 2018

[‡]As reported by school

^{##}Results made available to MDE after submittal deadline

[This page intentionally left blank]