



MARYLAND USED OIL RECYCLING PROGRAM CY23 DATA

Prepared for:
Senate Education, Energy, and Environment
Committee
House Environment and Transportation Committee

Bill Ferguson, Senate President
Maryland General Assembly

Adrienne Jones, Speaker of the House
Maryland General Assembly



Wes Moore
Governor

Aruna Miller
Lieutenant Governor

Serena McIlwain
Secretary

Suzanne Dorsey
Deputy Secretary

Page Left Intentionally Blank

EXECUTIVE SUMMARY

The Maryland Used Oil Recycling Program (the Program) is administered by the Maryland Department of the Environment (MDE) through a memorandum of understanding (MOU) with Maryland Environmental Service (MES). The authority for the Maryland Used Oil Recycling Program is found in Section 5-1001 of the Environment Article of the Maryland Annotated Code, the *Maryland Used Oil Recycling Act*.

MES is responsible for implementing a statewide program for the construction, operation, and the routine maintenance of used oil collection facilities; providing public education and outreach programs related to the disposal of used oil; and maintaining an information center to educate citizens regarding the proper disposal of used oil. Additionally, MES utilizes the collection sites for the collection of related recyclables including used antifreeze and used oil filters.

MES also administers funding for the purpose of implementing supplemental environmental projects. Specifically, this grant funding is used to assist in the construction of rain shelters to minimize stormwater contact with the used oil collection tanks and is also used to fund the purchase of above-ground storage tanks for new sites, as well as replacements for older sites.

Since 1988, the Program has resulted in the collection and recycling of over 20.2 million gallons of used oil in Maryland. Similarly, the Program has accomplished the collection and recycling of over 1.1 million gallons of used antifreeze from Maryland do-it-yourself automobile and boating enthusiasts.

During 2023, 454,396 gallons of used oil and 22,869 gallons of used antifreeze were collected from Program sponsored locations. Additionally, during this period, 161 drums of used oil filters were collected for recycling.



INTRODUCTION

The 2023 Maryland Used Oil Recycling Program Annual Report is provided to the Maryland General Assembly as required by Section 5-1001(g) of the Environment Article, the *Maryland Used Oil Recycling Act*.

The Maryland Used Oil Recycling Program (the Program) is administered by the Maryland Department of the Environment (MDE) through a memorandum of understanding (MOU) with Maryland Environmental Service (MES). MES designates used oil collection facilities, offers technical and financial assistance to establish collection facilities, routinely inspects and cleans Program-sponsored facilities, provides public education, operates an information center, and implements other non-regulatory provisions of the *Maryland Used Oil Recycling Act*. MDE and MES are pleased to provide the following report detailing the accomplishments, initiatives, and progress of the Program during calendar year (“CY”) 23 as well as plans for CY24.

BACKGROUND

The Program was created by the *Maryland Used Oil Recycling Act*, which was enacted in July 1978. Initial start-up funding for the Program was allocated from energy funds. This funding enabled the creation of a program to assist the home mechanic with properly used oil disposal. Farmers and boat owners at marinas also used these facilities for their oil recycling.



MES purchased oil collection tanks, collection boxes, hardware, and signs. County and local governments were solicited to assist in establishing convenient and accessible used oil collection sites for citizens. A variety of collection sites were established. Most are located at government-owned solid waste, public works, and road maintenance facilities.

The Program has been successful at recruiting and maintaining donor locations for several reasons: 1) the Program assumes the responsibility for disposing of any contaminated used oil; 2) opportunity for Program-provided financial assistance for tanks and shelters; and 3) no cost collections for participants.

2023 PROGRAM UPDATES AND ACCOMPLISHMENTS

Since its inception in 1988, the Program has expanded from 44 collection sites to the current 139 operational sites and has recycled more than 20.2 million gallons of used oil over this time period. Collection of used oil from all Program locations yielded 454,396 gallons of used oil in CY23. This was a 4.7 percent increase from the 433,084 gallons collected in 2022. Historical used oil and antifreeze annual collection results are summarized in graphs at the end of the report. Spreadsheets of the detailed used oil and antifreeze collection records for the participating Program sites are attached as well (Appendix A).

Key Updates and Accomplishments

- Collected and recycled 454,396 gallons of used oil.
 - Increase of 4.7% from 433,084 gallons in 2022.
- Collected and recycled 161 drums of used oil filters.
 - Decrease of 17.4% from 195 drums in 2022.
- Collected and recycled 22,869 gallons of used antifreeze.
 - Decrease of 19.3% from 28,336 gallons in 2022.
- Upgraded the 40 West Landfill collection site tank in Washington County with new paint, signs, and weld repairs. New and safer stairs were also installed with slip resistant tread.
- Installed new signs at the Garrett County sites for all acceptable and non-acceptable fluids. Replaced broken pour box at the King’s Run Transfer Station site.
- Additional Used Oil tank and Used Antifreeze drums installed at Penn Mar Recycle in Allegany County to enhance capacity.
- Replaced broken pour box screens at Frederick Recycle with new custom fit metal screens to reduce clogging and contamination.
- Containment cleanouts and repainted tanks with new level gauges and signage at Greensburg Transfer Station and Kaetzel Transfer Station in Washington County.
- Performed three (3) emergency cleanings of secondary containment areas due to spillage.
- Performed two (2) major cleanings of containment areas and oil tanks (inner and outer) from spillage and sludge build up in Prince George’s County.
- Updated multiple sites with new spill pallets, gauges, fill boxes, new magnetic signage, metal signs and stickers.
- Performed supplementary cleaning and maintenance at Program-sponsored locations during the year.
 - Six (6) sites in Talbot County and Queen Anne’s County inspected and cleaned bi-monthly along with digital level sensor gauge maintenance/verification.
 - Tank painting and sticker/metal/magnetic sign replacement at more than 50 sites.
 - Enhanced cleanings to continue in 2024 using the mobile cleaning unit.



Administration

The total cost for MES to implement the program in FY23 was \$249,976.35. The collection contract provides revenue per gallon for collected oil based on a federal commodity index. In FY23 the program was completely self funded by commodity revenue.

Operation and Maintenance

Good housekeeping is critical for spill control and to prevent contamination. As part of its management of the Program, MES has conducted on-site audits of all Program-sponsored collection facilities to ensure that sponsors, recycling coordinators, site supervisors, and site operational staff are aware of their pollution prevention responsibilities. Additionally, MES staff conducted routine cleaning and maintenance, as



Penn Mar –
Allegheny County

necessary, to assist the site hosts in maintaining environmental compliance. During CY23, MES performed supplementary cleaning and maintenance at the majority of Program sponsored locations.

To reduce costs associated for cleaning and water recovery completed by private contractors, MES secured a mobile cleaning trailer for use at oil collection sites. The trailer, equipped with a power washer, water tanks, and a water recovery system, allows MES staff to thoroughly clean collection sites and recover the resulting oily water. The mobile cleaning trailer was deployed throughout CY23 for enhanced cleanings and oily water recovery, resulting in significant savings to the used oil program when compared to 3rd party contractor cleanings.

MES continually reminds all site hosts that they are responsible for providing day-to-day monitoring and housekeeping of the tanks. MES staff assists with housekeeping and compliance as needed, based on the results of the routine site inspections. MES maintains a small full-time staff to conduct routine site audits and assist with site maintenance and cleaning. Sites are upgraded, as needed, to improve capacity or operational performance.

Given the concern over the proper disposal of used oil, contaminated oil, and the unauthorized dumping of trash and hazardous materials, MES continues to urge site hosts to remain in the Program. Because used oil can be easily contaminated with polychlorinated biphenyls, brake cleaning fluids, and other readily accessible chemicals, MES and MDE concur that citizens are better served by local governments staying within the established Program.

Public Outreach

MES and MDE each maintain a webpage with information related to the Program.

MES's webpage: menv.com/service/used-oil-antifreeze-recycling/

MDE's webpage: mde.maryland.gov/programs/Land/OilControl/Pages/UsedOilProgram.aspx

From the MES webpage, Marylanders can find the public information number **800-4RECYCLE** (800-473-2925) and an email address to inquire about proper disposal of used oil and antifreeze. MES also has a listing of collection sites by county. Hundreds of calls were made to the public information number in 2023, with most callers requesting information on used oil collection locations.

During CY23, information was provided to the public about the importance of proper handling, disposal, and recycling of used oil and antifreeze via social media and websites.



PLANNED ACTIVITIES FOR 2024

Administration

- MDE will continue to fund the Program if oil collection revenue does not cover Program costs.
- MES will continue to implement the Program.
- MES will manage the oil collection subcontract to ensure conformance with contract terms and conditions.
- MES will continue the grant program providing financial assistance to upgrade existing sites.

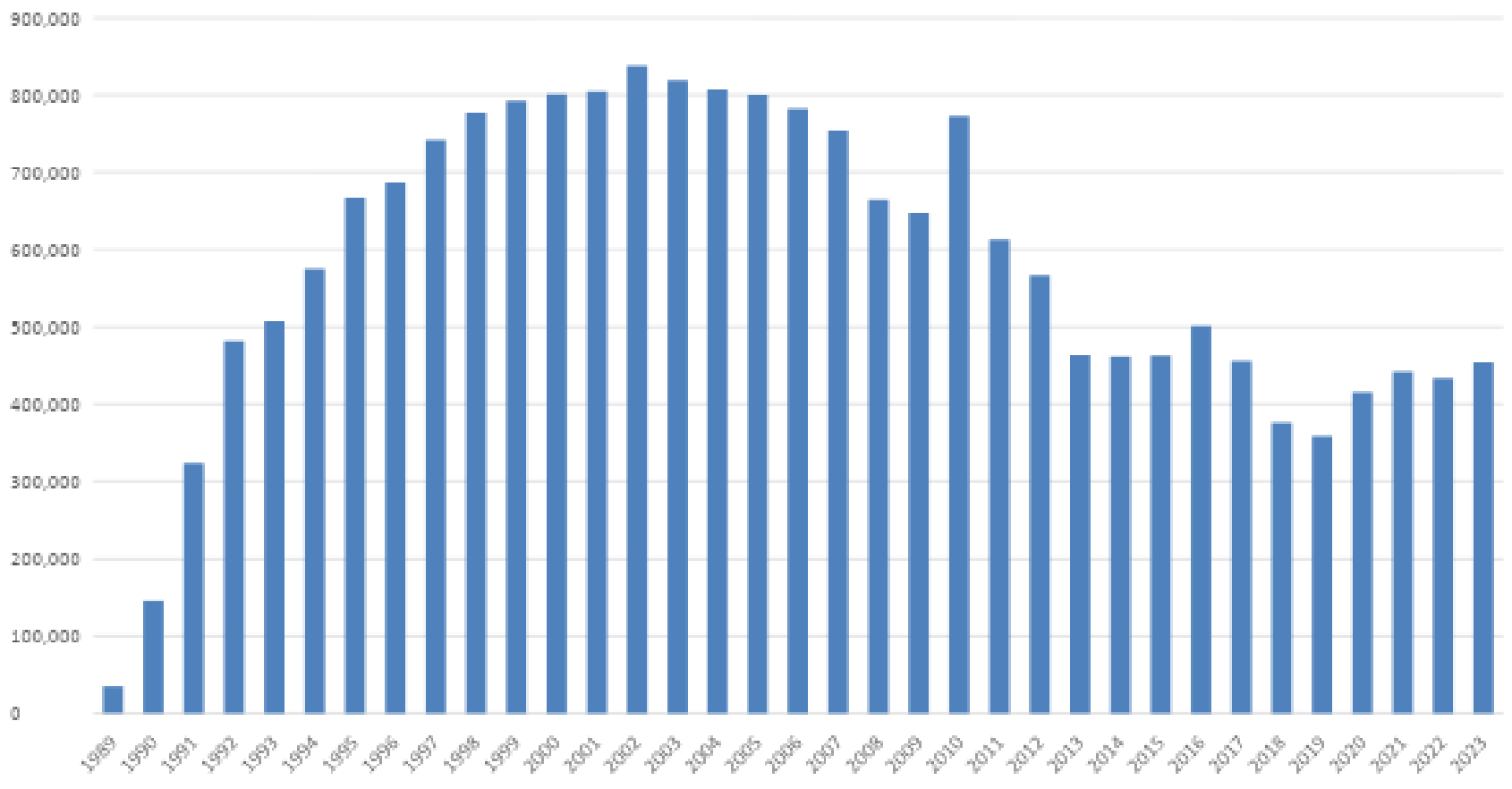
Operation and Maintenance

- MES will continue annual inspections of participating sites to ensure continued protection of the environment.
- MES will continue the routine maintenance and cleaning program.
- MES will continue the tank upgrade program by replacing single-wall 275-gallon tanks with new double-wall tanks.
- MES will explore ways to improve automated monitoring of participating sites to deter abuse of the facilities.

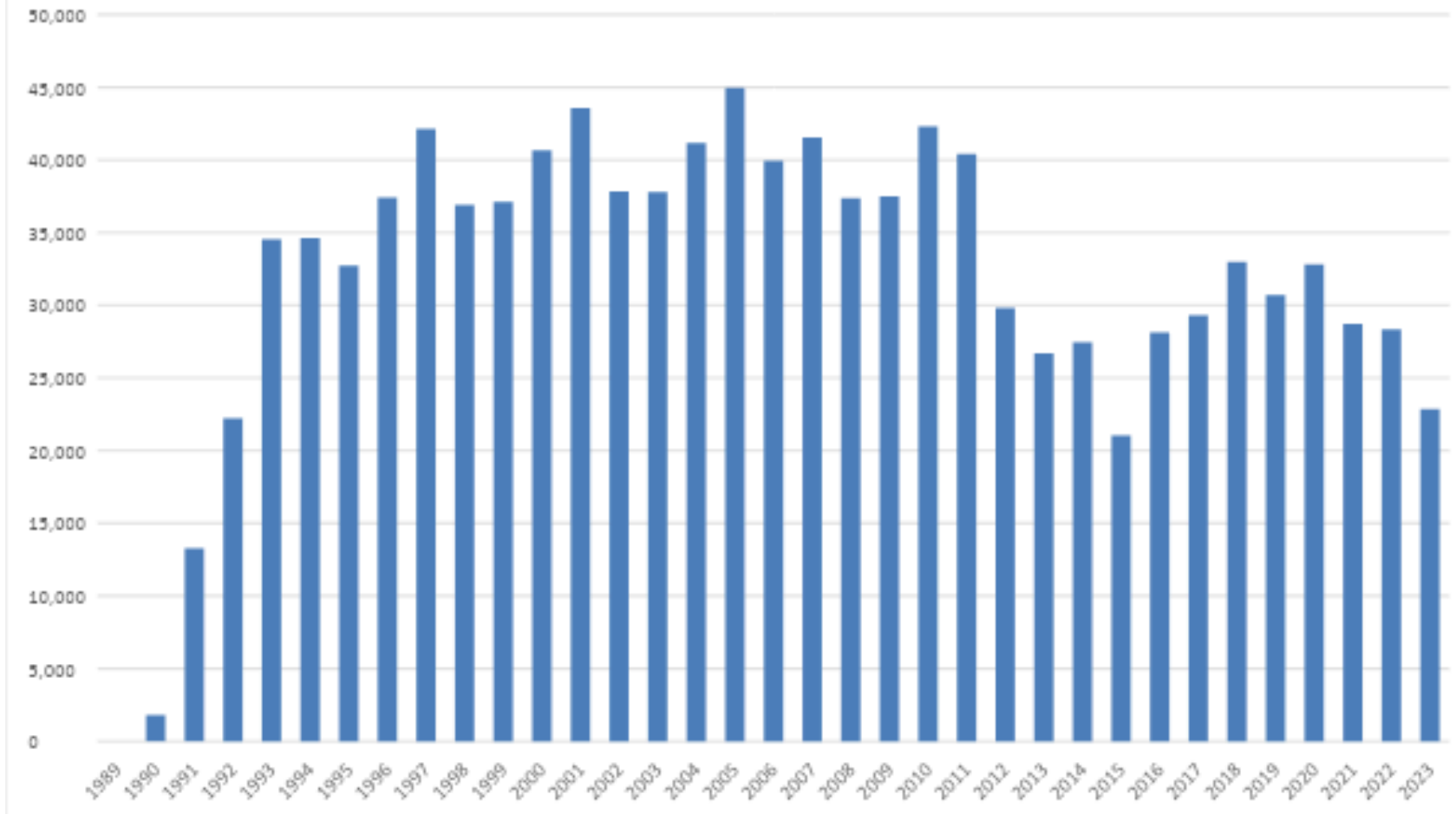
Public Outreach

- MES will continue updating and linking the used oil recycling pages at www.menv.com
- MES will continue public outreach and education at local county events.
- MES will send annual program reports to statewide solid waste managers and recycling coordinators.
- MES will continue membership in the Association of Responsible Recyclers while updating Program participants and citizens with current information, issues, and trends within the industry.
- MES will explore additional ways to market the Program to the public.

ANNUAL MES USED OIL RECOVERY
DIY Oil Collection Sites



ANNUAL MES USED ANTIFREEZE RECOVERY
DIY Oil Collection Sites
(gallons)



APPENDIX A

USED OIL and ANTIFREEZE COLLECTION DATA

2023

County	Location	January	February	March	April	May	June	July	August	September	October	November	December	Total
Garrett County	Bumble Bee					302			485			272		1,059
	Garrett County Landfill					296			752			500		1,548
	Garrett Highway Site					533			6533			461		7,527
	Kings Run Site					385			485			364		1,234
	Route 135					267			533			276		1,076
Harford County	Town of Grantsville				600			655				689		1,944
	Abingdon Highway Shop	285	100	394	445	767	266	330	315	454	611	486	397	4,850
	Aldino Highway Shop	535	300	693	521	768	727	407	728	474	619	707	377	6,856
	City of Havre De Grace WW				73			388		242		500		1,203
	Jarrettsville Highway Shop	1015	825	1682	1427	1786	993	1009	1042	1358	1609	1175	662	14,583
	Joppatown WWTP		555	442	260	218	364	364	175	373	682	252	273	3,958
	Norrsville Library Park&Recs	100	250	275	350	520	315	306	412	275	200	225	131	3,359
	Scarboro Landfill	830	810	1296	1303	1664	1091	1462	1333	1457	1261	800	762	14,069
	Sod Runn WWTP													0
	Town of Aberdeen PW	165	205	75	897	145	291	155	121	450	175	272	134	3,085
	Town of Bel Air PW	605	550	1083	230	753	586	873	612	985	824	776	477	8,354
	Whiteford Highway Shop	460	150	465	770	950	301	436	473	565	727	735	388	6,420
	Kent County	Duck Puddle Drop Off			150				175			373		
Haven Harbour Marina					218		412						345	975
Nicholson Drop Off		425		295	776	734	679	817	485	970	936	533		6,650
Rock Hall Landing Marina					218									218
Sharptown Drop off				90										90
Prince George's County	Cheltenham WWTP													0
	City of Greenbelt DPW	1050	800	550	1065	1355	820	720	990	509	779	840	656	10,134
	City of Hyattsville DPW	155	55	55	55	55		110	40		80	75	49	729
	City of Laurel DPW	1080	875	1050	300	895	1259	1032	1110	800	1308	776	320	10,805
	City of New Carrollton DPW	1291	848	628	500	1207	275	675	730	400	980	834	582	8,950
	Town of Cheverly	275		275		275	252		190	91	89			1,447
	Town of Riverdale Park	144	275	275	174		275	275	110		259	165	75	2,027
PG County MRF	200												200	
Queen Anne's County	Batts Neck Transfer Station	300		300	679	197	302	167	383	388	260	407	213	3,596
	Centerville Transfer Station	450		740	82	582	485	287	315	145	970	500		4,556
	Church Hill Transfer Station			305		194	242	241		265	267	252		1,766
	DNR Police/Marina							99		260				359
	Grasonville Transfer Station	310		440	375	156		267	242	340	524	364		3,018
	Glanding Transfer Station			345		399		392		388	378	242		2,144
	Piney Narrows Yacht Haven				260				267			200		727
	Queen Anne's Pub landing	250	230	605	624	664	745	508	659	230	955	557	587	6,614
Somerset County	Chance Transfer Station	120			242				194		200		189	945
	City of Crisfield DPW													0
	Dublin-Costen TS			270	206		194		160		50		194	1,074
	Marion-Crisfield TS	330		190	485		752			485	200	50	364	2,856
	Mt Vernon Transfer Station	550		350	417		267		422		400		412	2,818
	Somers Cove Marina			500						275				775
	Somerset County Landfill	155		90	139		179		165				267	995
St Mary's County	Eastern Correction Institute			110										110
	Charlotte Hall Conv Center	1140	495	900	996	839	1369	897	1075	887	1408	866	330	11,202
	Clements Conv Center	775		790	762	520	723	663	782	613	835	383	285	7,131
	Maryland Intern Raceway			1070			250		873		334	911		3,438
	Oakville Conv Center	660	275	540	684	439	898	643	544	573	652	205	195	6,308
	Ridge Conv Center	380		525	150	500	446	249	253	286	295	207	225	3,516
	St Andrew Conv Center	1205		990	1427	761	1544	459	910	1315	1339	430	355	10,735
	St Andrew Vehicle Main	370		405	140		421	279	231	214		262	230	2,552
	Valley Lee Conv Center	580	205	375	775	420	942	495	503	553	742	200	265	6,055
St Mary's Airport	275						275					253	803	

County	Location	January	February	March	April	May	June	July	August	September	October	November	December	Total
Talbot County	Bellevue Landing				235	173	121	97		120			90	836
	Dogwood Harbor		250			223	194	364		375	250		175	1,831
	Midshore Regional Landfill		375	120		191	289	84	221	250	400		200	2,130
	Neavitt Landing					206	206	94		165			60	731
	Oak Creek Landing	240		290	125	426	174	267	218	275	272	276	452	3,015
	Trappe Landing	145	170	250		105	218	133	63		195		70	1,349
Washington County	Dargan Transfer Station	140	110		195				267			223		935
	Greensburg TS	230		140	275	361	305	291		349	339	242	165	2,697
	Hancock Landfill			275				267			291			833
	Kaetzel Transfer Station	140	135		270		373	180		275	225	267		1,865
	40 West Landfill	750	520	1365	825	1944	242	1600	663	687	1232	1488	310	11,626
	Town of Boonsboro		540								533			1,073
Wicomico County	Airport Conv Center	170			267	82			194		184	170		1,067
	Bivalve Conv Center		270			176			218		242			906
	Delmar Conv Center		270			214	170		116	165		155	58	1,148
	Fruitland Conv Center	260			267			235		190	165	165		1,282
	Hebron Conv Center		200			201		139			213		126	879
	Mardela Springs Conv Center	200			194	97		128		204		50	48	921
	Newland Park LF Conv Center	370	1540	1005	825	772	1552	679	1067	1302	1503	1261	1096	12,972
	Parsonsborg Conv Center	215		175	226	97	184		133	275	218	218		1,741
	Quantico Conv Center			225			175			206	116		97	819
	Salisbury Wicomico Regional										361			361
	Sharptown Conv Center	270		205			460		106	194	204	194	48	1,681
	Wango Conv Center	140		135	183	97			73		97	165		890
	Wicomico Co. SW & Recycling			50										
Worcester County	Berlin Conv Center		610	215	509	464	739		663	751	412	621	470	5,454
	Central Landfill			540	189		267		145	737	238	175		2,291
	Pocomoke City Conv Center			265	267		194			227	50		160	1,163
	Snow Hill Conv Center			135	267		218		121		215	130	194	1,280
	Worcester County DPW			210	178		395	58			417	160		1,418
	Worcester County WWTP										485			485
Total Gallons		33310	21588	39153	40447	40980	42862	37579	44730	39494	47997	39315	26941	454,396

County	Location	January	February	March	April	May	June	July	August	September	October	November	December	Total
Talbot County	Bellevue Landing													0
	Dogwood Harbor													0
	Midshore Regional Landfill													0
	Neavitt Landing													0
	Oak Creek Landing													0
Washington County	Trappe Landing													0
	Dargan Transfer Station													0
	Greensburg TS											60		60
	Hancock Landfill													0
	Kaetzel Transfer Station													0
	40 West Landfill	150							320				315	785
Wicomico County	Town of Boonsboro													0
	Airport Conv Center													0
	Bivalve Conv Center					55								55
	Delmar Conv Center													0
	Fruitland Conv Center					35								35
	Hebron Conv Center													0
	Mardela Springs Conv Center													0
	Newland Park LF Conv Center			300			310				350			960
	Parsonsburg Conv Center					50								50
	Quantico Conv Center													0
	Sharptown Conv Center													0
	Wango Conv Center													0
	Worcester County	Wicomico Co. SW & Recycling												
Berlin Conv Center						110								110
Central Landfill														0
Pocomoke City Conv Center														0
Snow Hill Conv Center														0
Worcester County DPW				55		18	50			30			85	238
Total Gallons		2,330	0	2105	1016	2738	1295	1580	1185	3546	3440	1355	2279	22,869