



Maryland
Department of
the Environment

MARYLAND USED OIL RECYCLING PROGRAM (CY21 DATA)

Prepared by:
Land and Materials Administration
Oil Control Program

Prepared for:
Senate Education, Health, and Environmental Affairs Committee

House Environment and Transportation Committee

Larry Hogan, Governor
State of Maryland

Boyd K. Rutherford, Lt. Governor
State of Maryland

Bill Ferguson, Senate President
Maryland General Assembly

Adrienne A. Jones, House Speaker
Maryland General Assembly

February 2022

MARYLAND DEPARTMENT OF THE ENVIRONMENT
1800 Washington Boulevard | Baltimore, MD 21230 | mde.maryland.gov
410-537-3314 | 800-633-6101 x3314 | TTY Users: 7-1-1

Larry Hogan, Governor | Boyd K. Rutherford, Lt. Governor | Ben Grumbles, Secretary | Horacio Tablada, Deputy Secretary

Page Left Intentionally Blank

EXECUTIVE SUMMARY

The Maryland Used Oil Recycling Program (Program) is administered by the Maryland Department of the Environment (MDE) through a memorandum of understanding (MOU) with Maryland Environmental Service (MES). The authority for the Program is found in the *Maryland Used Oil Recycling Act*, Section 5-1001 of the Environment Article, *Annotated Code of Maryland*.

MES is responsible for implementing a statewide program for the construction, operation, and the routine maintenance of used oil collection facilities; providing public education and outreach programs related to the disposal of used oil; and maintaining an information center to educate citizens regarding the proper disposal of used oil. Additionally, MES utilizes the collection sites for the collection of related recyclables, including used antifreeze and used oil filters.

MES also administers funding for the purpose of implementing supplemental environmental projects. Specifically, this funding is used to assist in the construction of rain shelters to minimize stormwater contact with used oil collection tanks as well as to fund the purchase and/or replacement of above-ground storage tanks.

Since 1988, the Program has resulted in the collection and recycling of over 19.3 million gallons of used oil in the State of Maryland. Similarly, the Program has accomplished the collection and recycling of over 1 million gallons of used antifreeze from Maryland do-it-yourself automobile and boating enthusiasts.

During 2021, the Program collected 442,870 gallons of used oil and 28,738 gallons of used antifreeze from Program-sponsored locations. Additionally, during this period, 169 drums of used oil filters were collected for recycling.



Oakland, Garrett Co

INTRODUCTION

The 2021 Annual Report is provided to the Maryland General Assembly as required by Section 5-1001(g) of the Environment Article, the *Maryland Used Oil Recycling Act*.

The Program is administered by MDE through a MOU with MES. MES designates used oil collection facilities, offers technical and financial assistance to establish collection facilities, routinely inspects and cleans Program-sponsored facilities, provides public education, operates an information center, and implements other non-regulatory provisions of the *Maryland Used Oil Recycling Act*. MDE and MES are pleased to provide the following report detailing the accomplishments, initiatives, and progress of the Program during CY21 as well as plans for CY22.

BACKGROUND

The Program was created by the *Maryland Used Oil Recycling Act*, which was enacted in 1978. Initial start-up funding for the Program was allocated from energy funds. This funding enabled the creation of a Program to assist the home mechanic with proper used oil disposal. Farmers and boat owners at marinas also used these facilities for their oil recycling.



MES purchased oil collection tanks, collection boxes, hardware, and signs. County and local governments were solicited to assist in establishing convenient and accessible used oil collection sites for citizens. A variety of collection sites were established. Most are located at government-owned solid waste, public works, and road maintenance facilities.

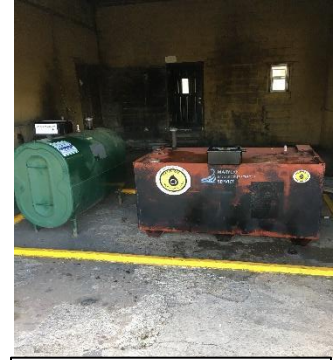
The Program has been successful at recruiting and maintaining donor locations for several reasons: 1) free collection service of used oil; 2) Program-provided financial assistance for tanks and shelters; and 3) the Program assumes the responsibility for disposing of any contaminated used oil.

2021 PROGRAM UPDATES AND ACCOMPLISHMENTS

Since its inception in 1988, the Program has expanded from 44 collection sites to the current 126 operational sites and has recycled more than 19.3 million gallons of used oil over this time period. Collection of used oil from all Program locations yielded 442,870 gallons of used oil in CY21. This was a 6.5% increase from the 415,739 gallons collected in 2020. Historical used oil and antifreeze annual collection results are summarized in graphs at the end of the report. Spreadsheets of the detailed used oil and antifreeze collection records for the participating Program sites are attached as well (Appendix A).

Key Updates and Accomplishments

- Collected and recycled 442,870 gallons of used oil.
 - Increased from 415,739 gallons in 2020.
- Collected and recycled 169 drums of used oil filters.
- Collected and recycled 28,738 gallons of used antifreeze.
- Developed replacement/upgrade plan for all sites.
- Reopened/upgraded the Hyattsville collection site, which will get a complete cleaning and new paint in spring 2022.
- Updated multiple sites with new spill pallets, gauges, and fill boxes.
- Full tank cleanings and inner sludge removal at Frederick Recycle.
- Performed supplementary cleaning and maintenance at Program-sponsored locations during the year.
 - Eight Harford County sites are cleaned twice weekly (through an independent agreement between MES and Harford County).
 - Tank painting and sticker replacement at more than 10 sites.
 - Enhanced cleanings to begin again in 2022 using the mobile cleaning unit.



Hyattsville

Administration

The Program cost to MDE for FY21 was \$93,514.61. MDE approved \$95,860 for MES to implement the Program in FY22. The current collection contract provides payment per gallon for collected oil based on a sliding scale. The revenue received in FY21 was \$98,763.03 leading to an estimated program revenue of \$5,248.42. MDE approved funding, coupled with the expected revenue from the new collection contract, brings the total available program funding for FY22 to \$185,352.

Operation and Maintenance

Good housekeeping practices are important aspects of spill control and contamination prevention. As part of its management of the Program, MES has conducted on-site audits of all Program-sponsored collection facilities to ensure that sponsors, recycling coordinators, site supervisors, and site operational staff are aware of their pollution prevention responsibilities. Additionally, MES staff conducted routine cleaning and maintenance, as necessary, to assist the site hosts in maintaining environmental compliance. During CY21, MES performed supplementary cleaning and maintenance at most Program-sponsored locations.



Mobile Cleaning Unit

Dargan Transfer Station

To reduce costs associated with cleanings and water recovery completed by private contractors, MES developed a mobile cleaning trailer for use at oil collection sites. The trailer, equipped with a power washer, water tanks, and a water recovery system allows MES staff to thoroughly clean collection sites and recover the resulting oily water. The mobile cleaning trailer was deployed several times in CY21 for enhanced cleanings and oily water recovery, resulting in significant savings to the Program when compared to contractor cleanings.

MES continually reminds all site hosts that they are responsible for providing day-to-day monitoring and housekeeping of their tanks. MES provides assistance with housekeeping and compliance as needed, based on the results of the routine site inspections. MES maintains a full-time staff to conduct routine site audits and assist with site maintenance and cleaning. Sites are upgraded, as needed, to increase compliance and minimize the potential for impacts to the environment.

Given the concern over proper disposal of used oil, contaminated oil, and unauthorized dumping of trash and hazardous materials, MES continues to urge site hosts to remain in the Program. Due to used oil being easily contaminated with polychlorinated biphenyls, brake cleaning fluids, and other readily accessible chemicals, MES and MDE concur that citizens are better served by local governments staying within the established Program.

Public Outreach

MES and MDE each maintain a web page with information related to the Program.

MES's webpage:

menv.com/service/used-oil-antifreeze-recycling/

MDE's webpage: mde.maryland.gov/programs/Land/OilControl/Pages/UsedOilProgram.aspx

From the MES webpage, Marylanders can find the public information number **800-4RECYCLE** (800-473-2925), and an email address to inquire about proper disposal of used oil and antifreeze. MES also has a listing of collection sites by county. Hundreds of calls were made to the public information number in 2021, with most callers requesting information on used oil collection locations.

During CY21, information was provided to the public about the importance of proper handling, disposal, and recycling of used oil and antifreeze via social media and environmental websites.

PLANNED ACTIVITIES FOR 2022

Administration

- MDE will continue to fund the Program and MES will continue to implement the Program.
- MES will continue the grant program to assist locations in upgrading existing sites.

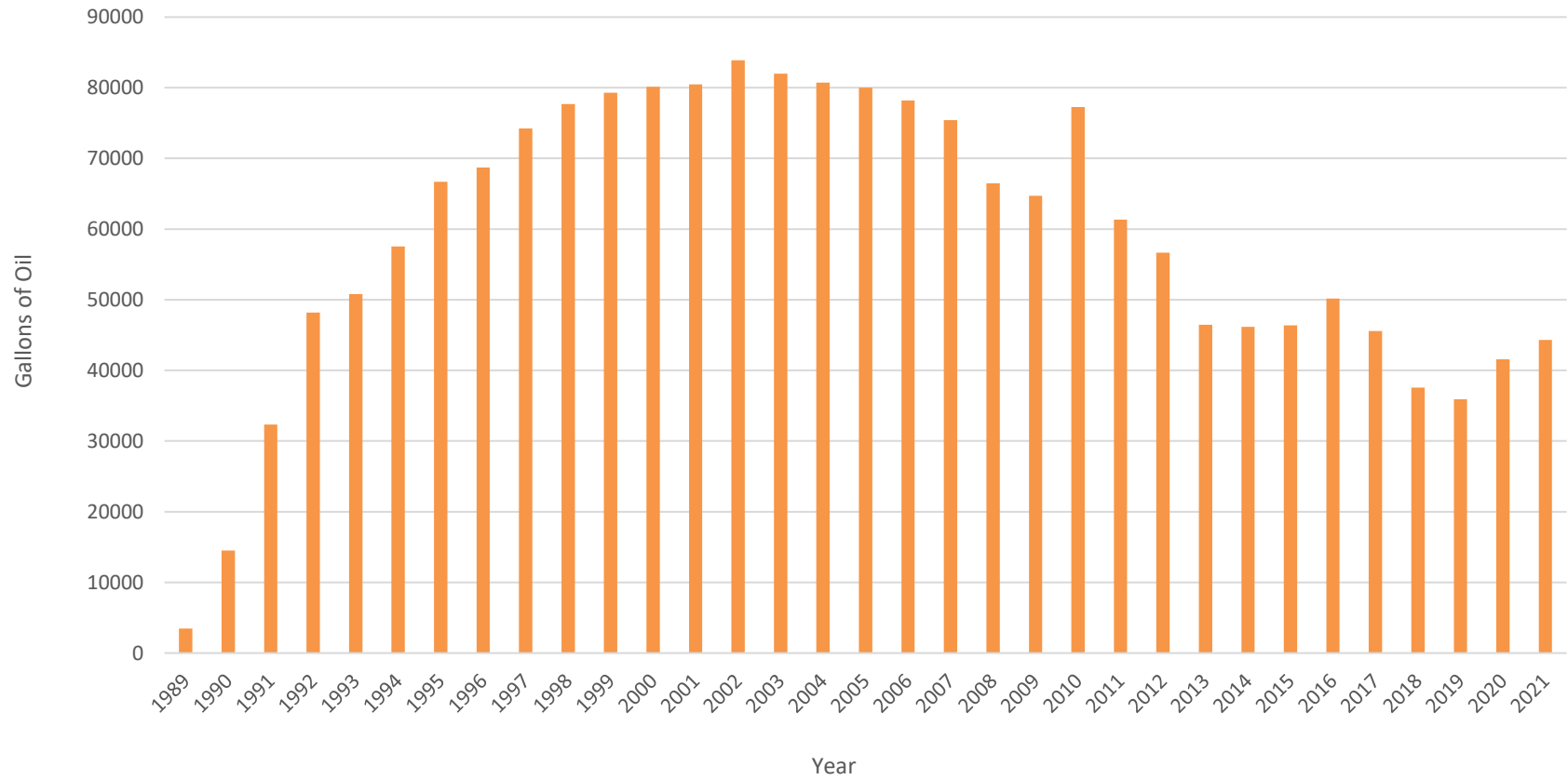
Operation and Maintenance

- MES will continue annual inspections of all Program-participating sites to ensure continued protection of the environment.
- MES will continue the routine maintenance and cleaning program to ensure safe operation at participating sites.
- MES will continue the tank upgrade program by replacing single-wall 275-gallon tanks with new, more environmentally protective double-wall tanks.
- MES will explore ways to improve automated monitoring of participating sites to deter abuse of the facilities.

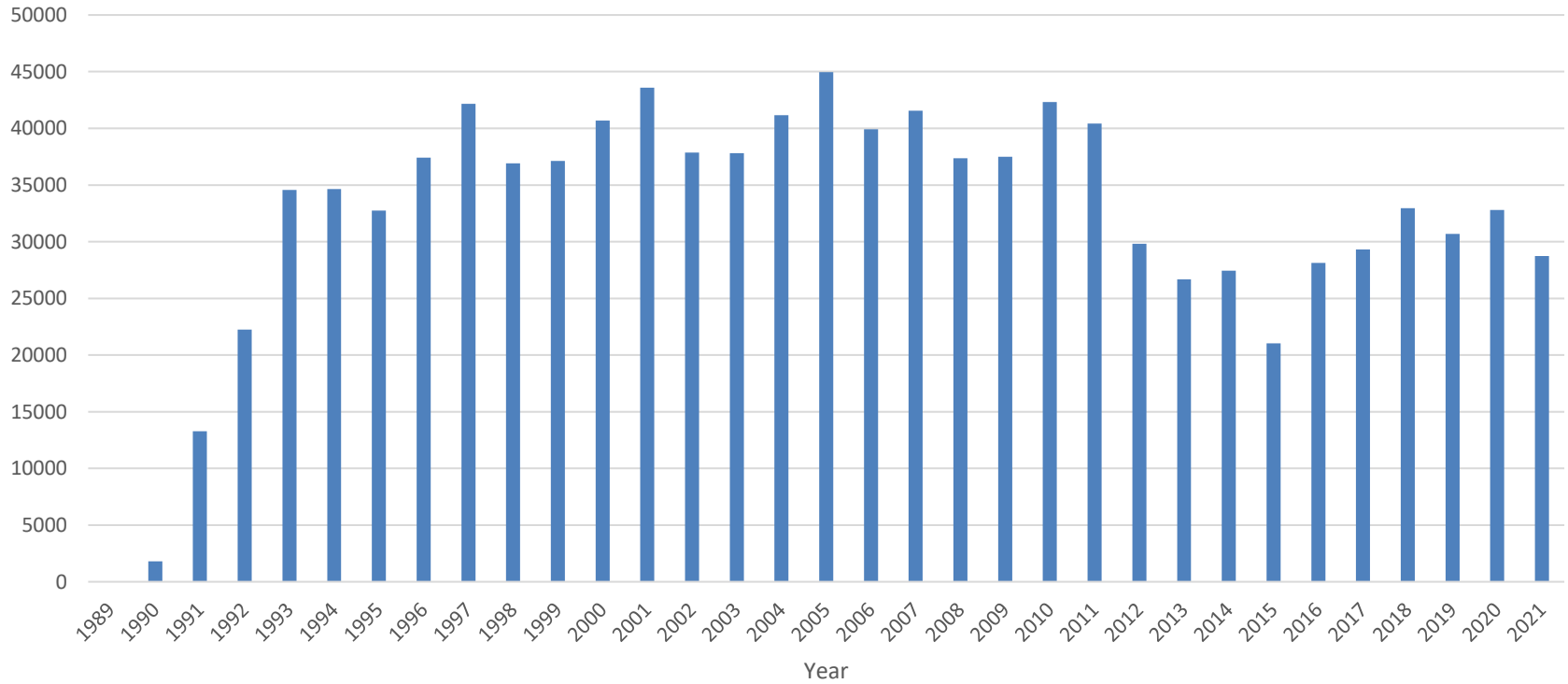
Public Outreach

- MES will continue updating and linking the used oil recycling pages on menv.com.
- MES will continue public outreach and education at local county events.
- MES will send annual Program reports to statewide solid waste managers and recycling coordinators.
- MES will continue membership in the Association of Responsible Recyclers while updating Program participants and citizens with current information, issues, and trends within the industry.
- MES will explore additional ways to market the Program to the public.

ANNUAL MES USED OIL RECOVERY DIY Oil Collection Sites



**ANNUAL MES USED ANTIFREEZE RECOVERY
DIY Oil Collection Sites
(gallons)**



APPENDIX A

USED OIL and ANTIFREEZE COLLECTION DATA

2021

**Maryland Environmental Service
2021 Used Oil Collection Report (gallons)**

County	Location	January	February	March	April	May	June	July	August	September	October	November	December	Total
Allegheny County	Allegheny County Road's	275		151			136		120		130		128	940
	Allegheny County SW TF			225			155				200		81	661
	Allegheny County Transit			115			72		60		65		51	363
	Flintstone SW Collection			360			209				310			879
	Moutainview LF	480		310		550	500		450		390	196	250	3,126
	Penn Mar Recycling	500		535		500	500	500	490		480	196	333	4,034
	Allegheny County Oldtown													0
Anne Arundel County	Annapolis Landing Marina					275		270			330		275	1,150
	Casa Rio Marina									50		270		320
	Crownsville Hospital													0
	Magothy Marina	270												270
	Mears Marina		220				50							270
	Port Annapolis				340				270		275		435	1,320
	White Rocks Marina						260							260
	Hidden Harbor Marina								500					500
Baltimore City	Eastern Sanitation Yard			228	260			495	86				400	1,469
	Northwest Sanitation Yard			235		430		501	382	338		255		2,141
	Northwest Transfer Station					500			136					636
	Quarantine Road Landfill		495		190			450		205	600		290	2,230
	Western Sanitation Yard					81								81
Baltimore County	Bowley's Marina				215					270		275	760	
Caroline County	Holly Collection Site	480	550	815	940	1,060	985	850	749	590	785	740	483	9,027
	Melville Collection Site				190				100					290
	Midshore II Regional Landfill	200		190		355			480		220			1,445
	Old Denton Collection Site				165				200					365
	Preston Collection Site				275			270			260			805
	Denton Dept Public Works													0
Carroll County	Carroll County Fleet			750	725				195	680			855	3,205
	Manchester Town Garage		640	490	610	665	300	545	935	275	640	200	540	5,840
	City of Taneytown Recycling			500	190	205		495	305	180	170		485	2,530
	Hampstead Town Maintenance		440	340	171	305	195	340	565	215	390	260	380	3,601
	Hoodmill Landfill													0
	Northern Landfill	2,145	835	3,040	2,925	2,860	3,015	2,835	2,935	2,730	2,275	3,195	1,920	30,710
	Westminster PW	475		960	940	885	815	800	1,085	645	695	1,045	175	8,520
	Freedom District Water													0
Cecil County	Town of Sykesville	570	550	900	940	1,075	635	275	1,164	755	793	1,255	750	9,662
	Cecil County Central Landfill	1,400	905	1,100	2,175	1,450	1,050	1,228	1,275	1,380	1,596	1,847	1,361	16,767
	Locust Point Marina										200			200
	Stemmers Run TS	175		430		235		180		340		250		1,610
	Town of Elkton Public Works			275	400	185	281	53	300	130		440		2,064
	Woodlawn Transfer Station	450	205	310	720	255	655	530	305	570	225	805	392	5,422
Bohemia Vista Marina			35							150			185	

County	Location	January	February	March	April	May	June	July	August	September	October	November	December	Total
Dorchester County	Beulah Landfill	425	750			500		410			600			2,685
	Cambridge WWTP													0
	City of Cambridge Public Works	300		540	735	600	250	450	520	800	200	512		4,907
	Golden Hill Landfill	320				200			180			120		820
	Secretary Transfer Station	200		210	275			285		260		260		1,490
Frederick County	Brunswick PW Garage	200		550	550	550	530	525	800	470	415	510		5,100
	Brunswick DWP (Shop)													0
	Mt. Airy Maintenance Facility	740	485	1,305	1,425	1,200	1,535	1,225	1,365	1,160	1,450	1,095	1,245	14,230
	Frederick County Recycling	1,150	955	2,855	1,895	2,325	3,260	825	2,670	1,360	1,695	1,695	2,445	23,130
	Town of Thumont		430	340	550	405	420	425	805	550	580	390	605	5,500
Garrett County	Bumble Bee			425				550			530	191		1,696
	Garrett County Landfill			485				501			480			1,466
	Garrett Highway Site			360				540			460			1,360
	Kings Run Site			775				500			480			1,755
	Route 135			275				475			130	450		1,330
	Town of Grantsville			780				408			840			2,028
Harford County	Abingdon Highway Shop	270		640	635	516	645	340	565	250	935	270	529	5,595
	Aldino Highway Shop	450	420	480	710	500	320	857	546	250	915	610	310	6,368
	City of Havre De Grace WW			265	170		190	126		200		250	466	1,667
	Jarrettsville Highway Shop	1,005	760	1,750	1,295	2,155	1,370	1,770	1,475	515	1,368	1,410	1,375	16,248
	Joppatown WWTP	380		275	230	490	225	280	135	270	487	205	465	3,442
	Norrisville Library Park & Recs	460		425	590	269	380	460	350	330	315	300	330	4,209
	Scarboro Landfill	740	380	1,963	1,370	1,215	1,885	1,240	1,780	630	1,749	1,210	1,155	15,317
	Sod Runn WWTP													0
	Town of Aberdeen PW			505	205	275	174	315	160	490	180	380	470	3,154
	Town of Bel Air PW	680	475	650	1,070	700	650	844	910	910	1,290	895	970	10,044
Kent County	Whiteford Highway Shop	440		915	690	495	390	925	705	450	480	575	260	6,325
	Duck Puddle Drop Off				400			380		110		145		1,035
	Haven Harbour Marina										625			625
	Nicholson Drop Off			670	500	875	760	500	515	330	270	415		4,835
	Sharptown Drop off			150	480			280				135		1,045
Prince George's County	Cheltenham WWTP													0
	City of Greenbelt DPW	650	550	1,145	908	719	1,100	862	500	550	550	1,100	1,260	9,894
	City of Hyattsville DPW					110				110	165		110	495
	City of Laurel DPW	850	500	1,425	1,035	800	755	1,035	813	800	1,605	625	1,085	11,328
	City of New Carrollton DPW	357		1,100	616	568	1,375	899	500	550	530	996	282	7,773
	Town of Cheverly	168				300			275		168			911
	Town of Riverdale Park	275		275	179	132		275	168	275		250	275	2,104
PG County MRF														0
Queen Anne's County	Batts Neck Transfer Station		475		375	480	390	460	375	280	295	530		3,660
	Centerville Transfer Station		490	310	400	509	505	485	345	210	330	500		4,084
	Church Hill Transfer Station		500	180	210	323	475	235	130	100	185	150		2,488
	Grasonville Transfer Station			325	440	313	300		280	340	140	275		2,413
	Glanding Transfer Station		500	120	200	179		485	150	90	125	215		2,064
	Piney Narrows Yacht Haven		270			165			120			275		830
	Queen Anne's Pub landing	350	400	350	430	888	785	580	565	520	570	600	290	6,328

County	Location	January	February	March	April	May	June	July	August	September	October	November	December	Total
Somerset County	Chance Transfer Station		275		200	140		69		75			218	977
	City of Crisfield DPW													0
	Dublin-Costen TS				110			139		130			68	447
	Marion-Crisfield TS		550	250	412	290		413	200	120	470		548	3,253
	Mt Vernon Transfer Station	380	140	150	400	150		398	220	105	150		213	2,306
	Somers Cove Marina					265								265
	Somerset County Landfill		250		410			242		65	215		157	1,339
Eastern Correction Institute														0
St Mary's County	Charlotte Hall Conv Center	940	275	880	1,150	1,120	1,280	1,270	943	1,210	1,060	970	892	11,990
	Clements Conv Center	670	220	735	1,290	700	1,120	700	780	780	660	620	534	8,809
	Maryland Intern Raceway			740			1,050					945		2,735
	Oakville Conv Center	390	450	710	610	720	830	620	565	470	600	520	465	6,950
	Ridge Conv Center	260	200	380	300	400	445	345	205	300	320	250	312	3,717
	St Andrew Conv Center	950	345	876	1,375	550	1,625	1,105	600	1,100	1,115	1,025	659	11,325
	St Andrew Vehicle Main	450		325	110	840		340	535	90		340	48	3,078
	Valley Lee Conv Center	540	270	480	630	570	730	580	394				336	4,530
St Mary's Airport														0
Talbot County	Bellevue Landing			70			70		95			75		310
	Dogwood Harbor		170			330	330		242	125		400		1,597
	Midshore Regional Landfill		480	200		150	865	330	262	200	200	295		2,982
	Newitt Landing		160		210	120	65	200	95	130		115		1,095
	Oak Creek Landing	220	270	270		490	100	175	200	470	200	250	220	2,865
	Trappe Landing		275	110	60	150	130		275	155		135		1,290
Washington County	Dargan Transfer Station			100	540			185				270		1,095
	Greensburg TS	275		275			420	245	240	370		410		2,235
	Hancock Landfill			130	140		267			272			15	824
	Kaetzal Transfer Station				1,140		275	235	200	260		270		2,380
	40 West Landfill	860		1,135		1,105	1,465		860	660	845	630	550	8,110
	Town of Boonsboro				60	335			340					735
Wicomico County	Airport Conv Center		140	90		131		165	70	65				661
	Bivalve Conv Center			275	270	70			70					685
	Delmar Conv Center	105			275	116		270	70	50		160		1,046
	Fruitland Conv Center					150		140	80	65				435
	Hebron Conv Center					190		75			265	70		600
	Mardela Springs Conv Center	100			1,150	200		85	70		70			1,675
	Newland Park LF Conv Center	450	1,900	810	135	1,450	730	340	975	1,620	940	920		10,270
	Parsonsborg Conv Center		275	160	60	170		270	200	110	130	100		1,475
	Quantico Conv Center			270		40		75		70				455
	Sharptown Conv Center				170	75		55		230		175		705
	Wango Conv Center		275			120		265	200	60		240		1,160
Wicomico Co. SW & Recycling				420				1,160		270			1,850	
Worcester County	Berlin Conv Center	540		525	300	865		750	320	835	560	530		5,225
	Central Landfill			420	240			170	170	125	80			1,205
	Pocomoke City Conv Center			330	150	210		133	190	140			315	1,468
	Snow Hill Conv Center			270		275		270	120	215	130			1,280
	Worcester County DPW													0
		January	February	March	April	May	June	July	August	September	October	November	December	2021 Totals
Total Gallons		24,960	19,825	46,353	43,256	43,114	40,279	43,183	40,575	33,455	40,326	38,483	29,061	442,870

**Maryland Environmental Service
2021 Antifreeze Collection Report (gallons)**

County	Location	January	February	March	April	May	June	July	August	September	October	November	December	Total
Allegheny County	Allegheny County Road's													0
	Allegheny County SWTF													0
	Allegheny County Transit													0
	Flintstone SW Collection													0
	Moutainview LF			75									20	95
	Penn Mar Recycling			45		60	70	170			90		10	445
	Allegheny County Oldtown													0
Anne Arundel County	Annapolis Landing Marina							75					5	80
	Casa Rio Marina					30						15		45
	Crownsville Hospital													0
	Magothy Marina													0
	Mears Marina						10							10
	Port Annapolis				105						70		175	350
	White Rocks Marina						20							20
Baltimore City	Hidden Harbor Marina								30					30
	Eastern Sanitation Yard													0
	Northwest Sanitation Yard													0
	Northwest Transfer Station													0
	Quarantine Road Landfill													0
	Western Sanitation Yard						75							75
	Bowley's Marina				50					15		15		80
Baltimore County	Holly Collection Site			125				80	70		55	30		360
	Melville Collection Site				30									30
	Midshore II Regional Landfill						50							50
	Old Denton Collection Site													0
	Preston Collection Site				30									30
	Denton Dept Public Works													0
Carroll County	Carroll County Fleet					285								285
	Manchester Town Garage		150		115	35		70			160		170	700
	City of Taneytown Recycling													0
	Hampstead Town Maintenance			45					25			15	60	145
	Hoodmill Landfill													0
	Northern Landfill	200	225	530	305	320	200	175	275	45	275	265	335	3,150
	Westminster PW													0
	Freedom District Water													0
Cecil County	Town of Sykesville	150		100	80				40	25	115	125		635
	Cecil County Central Landfill	250			95	55		55		150			125	730
	Locust Point Marina													0
	Stemmers Run TS			70										70
	Town of Elkton Public Works			30	40	10	5					40		125
	Woodlawn Transfer Station							165						165
Bohemia Vista Marina			5							20			25	

County	Location	January	February	March	April	May	June	July	August	September	October	November	December	Total
Somerset County	Chance Transfer Station													0
	City of Crisfield DPW													0
	Dublin-Costen TS							5						5
	Marion-Crisfield TS			15	110					50			65	240
	Mt Vernon Transfer Station					25			40		15		15	95
	Somers Cove Marina					20								20
	Somerset County Landfill				50					30			3	83
St Mary's County	Eastern Correction Institute													0
	Charlotte Hall Conv Center	100			100	145	35	100	65	15	40	60	25	685
	Clements Conv Center					70	40		50	10	30	25		225
	Maryland Intern Raceway													0
	Oakville Conv Center			55	30	20	45		65	20	100	25	50	410
	Ridge Conv Center				40	20		20	20	20	15	25	20	180
	St Andrew Conv Center		85	55	50	40	105	130	40	80	65	45	130	825
	St Andrew Vehicle Main					65								65
Valley Lee Conv Center		60		30	35	40							165	
Talbot County	St Mary's Airport													0
	Bellevue Landing													0
	Dogwood Harbor													0
	Midshore Regional Landfill		100	70						135		75		380
	Neavitt Landing													0
	Oak Creek Landing													0
Washington County	Trappe Landing													0
	Dargan Transfer Station			20				40						60
	Greensburg TS			30				75		15				120
	Hancock Landfill			15									70	85
	Kaetzl Transfer Station							50				15		65
	40 West Landfill	200		100		125				95	55	75	30	680
Wicomico County	Town of Boonsboro													0
	Airport Conv Center								25					25
	Bivalve Conv Center				20	20								40
	Delmar Conv Center				50									50
	Fruitland Conv Center									15				15
	Hebron Conv Center					50		20						70
	Mardela Springs Conv Center				75	20								95
	Newland Park LF Conv Center		250	90	20	395	75			125	80	115		1,150
	Parsonsburg Conv Center								30			10		40
	Quantico Conv Center			25	40									65
	Sharptown Conv Center									10				10
	Wango Conv Center													0
Worcester County	Wicomico Co. SW & Recycling				40	100		100						240
	Berlin Conv Center	45				55		50	20	30	40	25		265
	Central Landfill					20			15					35
	Pocomoke City Conv Center												2	2
	Snow Hill Conv Center													0
Worcester County DPW													0	
		January	February	March	April	May	June	July	August	September	October	November	December	2021 Totals
Total Gallons		2,250	1,370	2,970	2,450	3,278	1,590	2,595	1,710	1,410	3,320	2,955	2,840	28,738