



Maryland

Department of the Environment

Larry Hogan, Governor
Boyd K. Rutherford, Lt. Governor

Ben Grumbles, Secretary
Horacio Tablada, Deputy Secretary

February 26, 2021

The Honorable Bill Ferguson, President
Senate of Maryland
State House, H-107
Annapolis, MD 21401-1991

The Honorable Adrienne Jones, Speaker
House of Delegates
State House, H-101
Annapolis, MD 21401-1991

Dear President Ferguson and Speaker Jones:

As required in Section 15-203(g) of the Environment Article, *Annotated Code of Maryland*, I am enclosing a copy of the Calendar Year 2018 Ninety-Seventh Annual Report of the Maryland Bureau of Mines.

If the Department can provide you with any additional information, please contact me or Ms. Kaley Laleker, Director of the Land and Materials Administration, at 410-537-3304 or via email at kaley.laleker@maryland.gov.

Sincerely,

A handwritten signature in black ink that reads "Ben Grumbles". The signature is written in a cursive, flowing style.

Ben Grumbles
Secretary

Enclosures

cc: Kaley Laleker, Director, Land and Materials Administration
Sarah Albert, Maryland Department of Legislative Services



Maryland
Department of
the Environment

MARYLAND USED OIL RECYCLING PROGRAM (CY19 DATA)

Prepared by:
Land and Materials Administration
Resource Management Program

Prepared for:
Senate Education, Health, and Environmental Affairs Committee

House Environment and Transportation Committee

Larry Hogan, Governor
State of Maryland

Boyd K. Rutherford, Lt. Governor
State of Maryland

Bill Ferguson, Senate President
Maryland General Assembly

Adrienne A. Jones, House Speaker
Maryland General Assembly

August 2020

MARYLAND DEPARTMENT OF THE ENVIRONMENT
1800 Washington Boulevard | Baltimore, MD 21230 | mde.maryland.gov
410-537-3314 | 800-633-6101 x3314 | TTY Users: 7-1-1
Larry Hogan, Governor | Boyd K. Rutherford, Lt. Governor | Ben Grumbles, Secretary

Page Left Intentionally Blank

EXECUTIVE SUMMARY

The Maryland Used Oil Recycling Program (the Program) is administered by the Maryland Department of the Environment (MDE) through a memorandum of understanding (MOU) with the Maryland Environmental Service (MES). The authority for the Program is found in Section 5-1001 of the Environment Article of the Maryland Annotated Code, the *Maryland Used Oil Recycling Act*.

MES is responsible for implementing a statewide program for the construction, operation, and the routine maintenance of used oil collection facilities; providing public education and outreach programs related to the disposal of used oil; and maintaining an information center to educate citizens regarding the proper disposal of used oil. Additionally, MES utilizes the collection sites for the collection of related recyclables, including used antifreeze and oil filters.

MES also administers funding for the purpose of implementing supplemental environmental projects. Specifically, this grant funding is used to assist in the construction of rain shelters to minimize stormwater contact with the used oil collection tanks and is also used to fund the purchase of above-ground storage tanks for new sites, as well as replacements for older sites.

Since 1988, the Program has collected and recycled over 18.4 million gallons of used oil in the State of Maryland. Similarly, the Program has collected and recycled over 1 million gallons of used antifreeze from Maryland do-it-yourself automobile and boating enthusiasts.

During 2019, 359,100 gallons of used oil and 30,686 gallons of used antifreeze were collected from Program-sponsored locations. Additionally, during this period, 166 drums of used oil filters were collected for recycling.



Town of Aberdeen

INTRODUCTION

The 2019 Maryland Used Oil Recycling Program Annual Report is provided to the Maryland General Assembly as required by Section 5-1001(g) of the Environment Article, the *Maryland Used Oil Recycling Act*.

The Maryland Used Oil Recycling Program (the Program) is administered by the Maryland Department of the Environment (MDE) through a memorandum of understanding (MOU) with the Maryland Environmental Service (MES). MES designates used oil collection facilities, offers technical and financial assistance to establish collection facilities, routinely inspects and cleans Program-sponsored facilities, provides public education, operates an information center, and implements other non-regulatory provisions of the *Maryland Used Oil Recycling Act*. MDE and MES are pleased to provide the following report detailing the accomplishments, initiatives, and progress of the Program during CY19 as well as plans for CY20.

BACKGROUND

The Program was created by the *Maryland Used Oil Recycling Act*, which was enacted in July 1978. Initial start-up funding for the Program was allocated from energy funds. This funding enabled the creation of a program to assist the home mechanic with proper used oil disposal. Farmers and boat owners at marinas also used these facilities for their oil recycling.



MES purchased oil collection tanks, collection boxes, hardware, and signs. County and local governments were solicited to assist in establishing convenient and accessible used oil collection sites for citizens. A variety of collection sites were established. Most are located at government-owned solid waste, public works, and road maintenance facilities.

The Program has been successful at recruiting and maintaining donor locations for several reasons: 1) free collection service of used oil; 2) Program-provided financial assistance for tanks and shelters; and 3) the Program assumes the responsibility for disposing of any contaminated used oil.

2019 PROGRAM UPDATES AND ACCOMPLISHMENTS

Since its inception in 1988, the Program has expanded from 44 collection sites to the current 131 operational sites and has recycled more than 18.4 million gallons of used oil over this time period. Collection of used oil from all Program locations yielded 359,100 gallons of used oil in CY19. This was a 4.4% decrease from the 375,727 gallons collected in 2018. Historical used oil and antifreeze annual collection results are summarized in graphs at the end of the report. Spreadsheets of the detailed used oil and antifreeze collection records for the participating Program sites are attached as well (Appendix A).

Key Updates and Accomplishments

- Collected and recycled 359,100 gallons of used oil.
- Collected and recycled 166 drums of used oil filters.
- Assisted with the replacement of secondary containment units in Jarrettsville.
- Developed replacement/upgrade plan for all sites.
- Replaced/Upgraded oil tanks at Aberdeen, Cambridge, Flintstone, and Havre de Grace.
- Updated multiple sites with new spill pallets, gauges and fill boxes.
- Performed supplementary cleaning and maintenance at Program-sponsored locations during the year.
 - Eight Harford County sites cleaned twice weekly (through an independent agreement between MES and Harford County).
 - Enhanced cleanings at 12 sites utilizing the mobile cleaning unit.
 - Oily water removal from five sites using our water recovery system.
 - Painted and replaced stickers at more than 15 sites.



Program Administration

The Program cost to MDE for state FY19 was \$97,190.37. MDE approved \$99,900 for MES to implement the Program in FY20. In response to increased prices in the oil market, MES issued a public bid for collections in April 2019. The winning bid was \$0.20 per gallon for collected oil, leading to an estimated program revenue of \$70,000 in FY20. MDE approved funding, coupled with the expected revenue from the new collection contract, brings the total available program funding for FY20 to \$169,900.

Operation and Maintenance

Good housekeeping practices are important aspects of spill control and contamination prevention. As part of its management of the Program, MES has conducted on-site audits of all Program-sponsored collection facilities to ensure that sponsors, recycling coordinators, site supervisors, and site operational staff are aware of their pollution prevention responsibilities. Additionally, MES staff conducted routine cleaning and maintenance, as necessary, to assist the site hosts in maintaining environmental compliance. During 2019, MES performed supplementary cleaning and maintenance at most Program-sponsored locations.



To reduce costs associated for cleanings and water recovery completed by private contractors, MES developed a mobile cleaning trailer for use at oil collection sites. The trailer, equipped with a power washer, water tanks, and a water recovery system allows staff to thoroughly clean collection sites and recover the resulting oily water. The mobile cleaning trailer was deployed 12 times in 2019 for enhanced cleanings and oily water recovery, resulting in significant savings to the used oil program when compared to contractor cleanings.

MES continually reminds all site hosts that they are responsible for providing day-to-day monitoring and housekeeping of their tanks. Staff assists with housekeeping and compliance as needed, based on the results of the routine site inspections. MES maintains a full-time staff to conduct routine site audits and assist with

site maintenance and cleaning. Sites are upgraded, as needed, to increase compliance and minimize the potential for impacts to the environment.

Given the concern over proper disposal of used oil, contaminated oil, and unauthorized dumping of trash and hazardous materials, MES continues to urge site hosts to remain in the Program. Due to the fact that used oil can be easily contaminated with polychlorinated biphenyls, brake cleaning fluids, and other readily accessible chemicals, MES and MDE feel that citizens are better served by local governments staying within the established Program.

Public Outreach

MES and the MDE each maintain a webpage with information related to the Program.

MES' webpage:

menv.com/service/used-oil-antifreeze-recycling/

MDE's webpage: mde.maryland.gov/programs/Land/OilControl/Pages/UsedOilProgram.aspx

From the MES webpage, Marylanders can find the public information number **800-4RECYCLE** (800-473-2925), and an email address to inquire about proper disposal of used oil and antifreeze. MES also has a listing of collection sites by county. Hundreds of calls were made to the public information number in 2019, with most callers requesting information on used oil collection locations.

During 2019, information was provided to the public about the importance of proper handling, disposal, and recycling of used oil and antifreeze via education and outreach events and social media.

PLANNED ACTIVITIES FOR 2020

Administration

- MDE will continue to fund the Program; MES will continue to implement the Program.
- MES will continue the grant program to assist locations in upgrading existing sites.

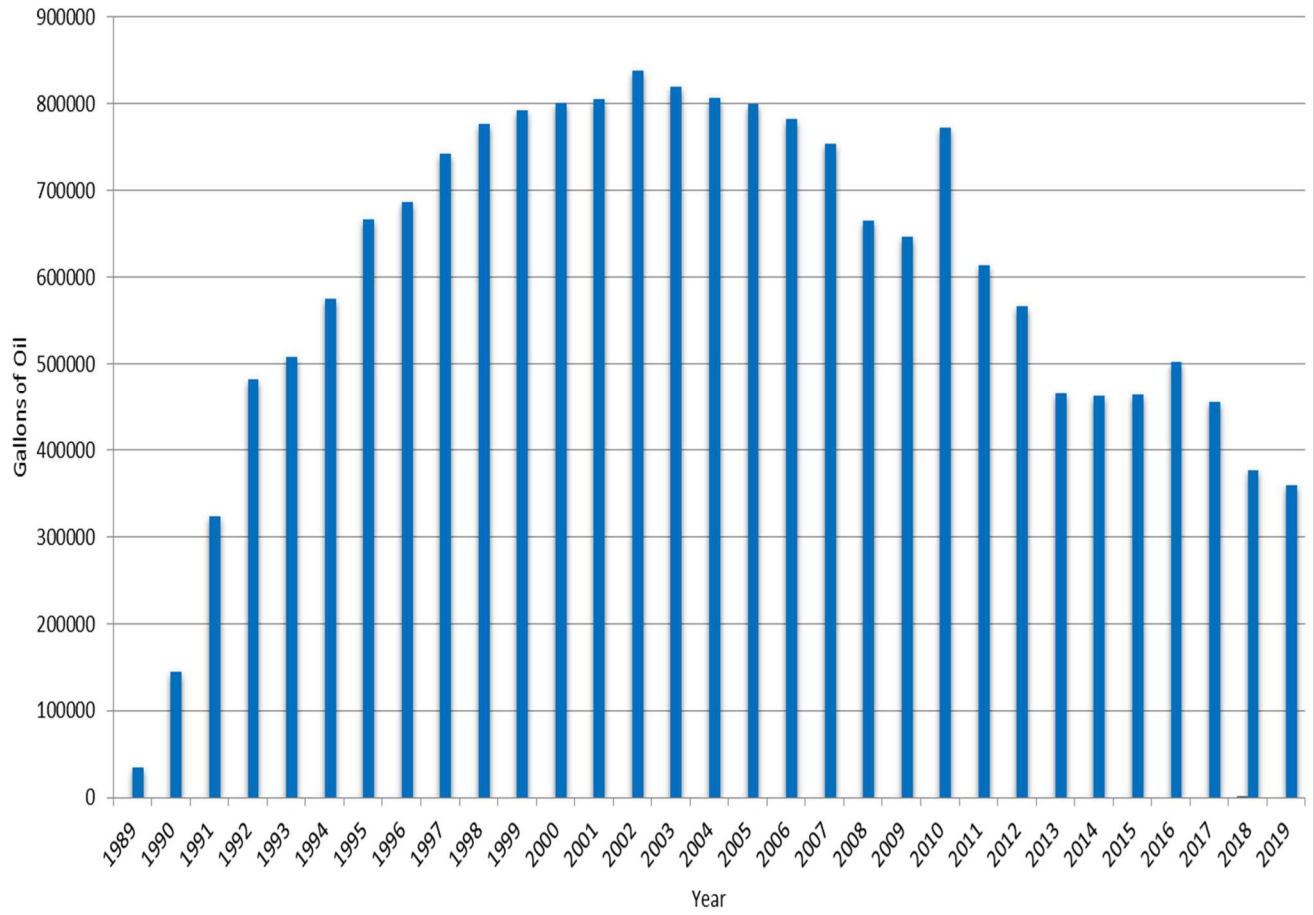
Operation and Maintenance

- MES will continue annual inspections of all Program-participating sites in order to ensure continued protection of the environment.
- MES will continue the routine maintenance and cleaning program to ensure safe operation at participating sites.
- MES will continue the tank upgrade program by replacing single-wall 275-gallon tanks with new, more environmentally protective double-wall tanks.
- MES will explore ways to improve automated monitoring of participating sites to deter abuse of the facilities.

Public Outreach

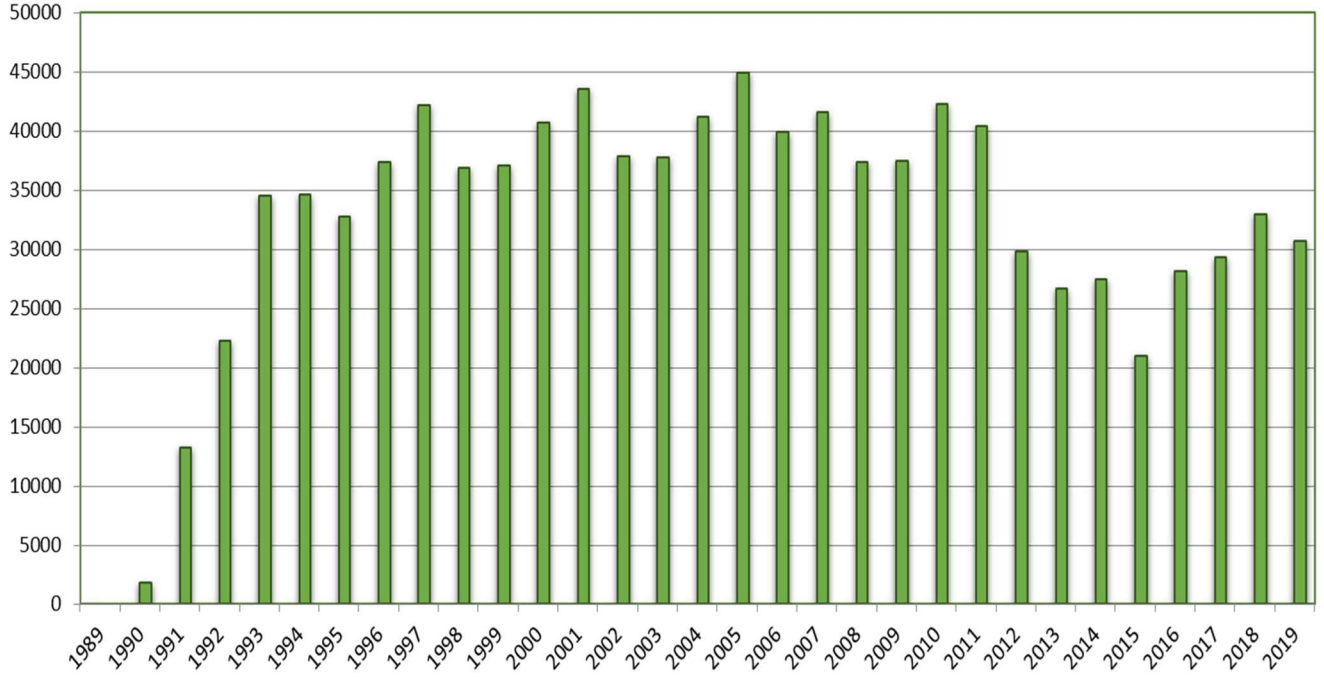
- MES will continue updating and linking the used oil recycling pages on MES will continue public outreach and education at local county events.
- MES will send annual program reports to solid waste managers and recycling coordinators.
- MES will continue membership in the Association of Responsible Recyclers while updating Program participants and citizens with current information, issues, and trends within the industry.
- MES will explore additional ways to market the Program to the public.

ANNUAL MES USED OIL RECOVERY DIY Oil Collection Sites



ANNUAL MES USED ANTIFREEZE RECOVERY

DIY Oil Collection Sites
(gallons)



APPENDIX A

USED OIL and ANTIFREEZE COLLECTION DATA

CY19

Maryland Environmental Service
2019 Used Oil Collection Report (gallons)

County	Location	January	February	March	April	May	June	July	August	September	October	November	December	Total
Allegheny County	Allegheny County Road's	95				166		104		166				531
	Allegheny County SWTF													0
	Allegheny County Transit			190		95		166	166	95				712
	Flintstone SW Collection	47		47		500		162			214			970
	Mountainview LF	332		261		451	341	347	332	285	209	356		2,914
	Penn Mar Recycling	285		356	499	404	119	475	176	228	380	427		3,349
Anne Arundel County	Annapolis Landing Marina					261			214					475
	Casa Rio Marina	237						190			214		171	812
	Crownsville Hospital													0
	Magothy Marina													0
	Port Annapolis							237						237
	Mears Marina					157								157
	White Rocks Yacht Center									261				261
Hidden Harbor Marina				475									570	1,045
Baltimore City	Eastern Sanitation Yard	119		142		380		266	285	123	190	62		1,567
	Northwest Sanitation Yard			404		271		313		632				1,620
	Northwest Transfer Station												237	237
	Quarantine Road Landfill				950				712		285		142	2,089
	Western Sanitation Yard								157	24	95			276
	Balti City Western Accept	332	190	902	665	760	552	902	475	522	833	427	594	7,154
	Bowley's Marnia							237			258			495
Caroline County	Holly Collection Site	689	442	1,092	342	499	831	807	926	641	669	494	427	7,859
	Melville Collection Site					225							190	415
	Midshore II Regional Landfill				380				380				332	1,092
	Old Denton Collection Site			380				332						712
	Preston Collection Site					261					237			498
	Denton Dept Public Works													0
Carroll County	Carroll County Fleet			250		3,040							1,924	5,214
	City of Taneytown Recycling		190	309		380	261			427		285	190	2,042
	City of Westminster PW	522	759	1,091	545	142	617		546	569	570	523	498	6,382
	Hampstead Maintenance	285	166	166	332	214	285	902	380		475		285	3,490
	Hoodsmill								475		237		285	997
	Northern Landfill	1,851	1,210	1,924	2,745	2,067	3,086	2,991	2,540	2,469	2,492	2,350	1,947	27,672
	Town of Sykesville	214	665	404	641	811	617	902	427	546	736	664	214	6,841
	City of Manchester				545	142	546	451	142	427	665	380	356	3,654
Cecil County	Cecil County Landfill	1,247	570	119	2,289	930	718	1,211	617	1,439	498	1,021	992	11,651
	Locust Point Marina													0
	Stemmers Run TS	475			316			309		285			361	1,746
	Town of Elkton Public Works	474	119	258	224	439	199	427	128	408	128	190	256	3,250
	Woodlawn Transfer Station		309	418	752	532	380	765	309	608	404	474		4,951
Dorchester County	Bohemia Vista Marina			71										71
	Beulah Landfill			446				333			475			1,254
	Cambridge WWTP													0
	City of Cambridge	337	62	394	351	460	331	508	487	461	142	119	309	3,961
	Golden Hill Landfill		537			271					285			1,093
Secretary Transfer Station		484		237	237		261	261		218	133	95	1,926	

County	Location	January	February	March	April	May	June	July	August	September	October	November	December	Total
Frederick County	Brunswick Dept PW	332	261	499	285		451	594		427	427	427	237	3,940
	Mt. Airy Maintenance Facility	1,187	665	925	1,244	1,212	1,163	1,567	1,259	1,117	1,116	783	930	13,168
	Frederick County Recycling	1,591	949	1,448	3,039	2,068	2,352	1,757	2,043	2,138	2,160	1,305	759	21,609
	Town of Thumont	142	261	190	759	309	498	237	475	617	356	285	332	4,461
Garrett County	Garrett County Landfill					119				190				309
	Town of Grantsville					641				689				1,330
	Bumble Bee					309				380				689
	Garrett Highway Site					309				332				641
	Route 135									214				214
	Kings Run Site					380				380				760
Harford County	Abingdon District Hwy Shop	284	119	356	380	503	332	233	185	570	437	218	209	3,826
	Aldino Hwy Shop	142	209	303	427	443	190	123	237	161	398	208	66	2,907
	City of Havre De Grace WW	95			190	364	104				76	66		895
	Jarrettsville Hwy Shop	769	474	921	768	1,291	560	640	997	417	749	408	361	8,355
	Joppatown WWTP		142	66	304		190	66	139	85	266	66	76	1,400
	Norrsville Elem School		394	347	812	304	47	285	465	427	95	142	228	3,546
	Scarboro Landfill	1,164	740	882	1,391	1,391	1,329	1,116	1,396	559	596	465	284	11,313
	Sod Runn WWTP			119										119
	Town of Aberdeen PW	237	95	71	95	119	142	142	237	209	95	142	190	1,774
	Town of Bel Air PW	522	261	456	569	757	455	375	864	342	399	484	171	5,655
Kent County	Whiteford Hwy Shop	308	275	437	484	822	570	380	474	313	446	237	47	4,793
	Haven Harbour Marina							760						760
	Duck Puddle Drop Off					186				95	71			352
	Nicholson Drop Off	370	237	654		523		760		475	237	950		4,206
Prince George's County	Sharptown Drop off					268				214				482
	Cheltenham WWTP	190												190
	City of Hyattsville DPW		250		261									511
	City of Laurel DPW	512	626	527	509	370	380	285	551	398	532	465	375	5,530
	City of New Carrollton DPW	237		553	313	456	285	408	404	190	475	537	228	4,086
	City of Greenbelt DPW	228	275	180	114	736	475	237	479	408	427	366	76	4,001
	Town of Cheverly			261		123		190		171	95	76		916
	Town of Riverdale Park	123	95	133	152		242	52	185	133		190		1,305
Queen Anne's County	PG Cty Materials Recovery			190										190
	Batts Neck Transfer Station	190	142	113	332	951	502	380	570	214	380	190	261	4,225
	Centerville Transfer Station	380	190	427	214	296	402	475	475	427	285	309	332	4,212
	Church Hill Transfer Station	142	57		309	198	237	285	271	47	171	52		1,769
	Grasonville Transfer Station		95		237		451	380	400	142	332	209	218	2,464
	Glanding Transfer Station	142	47		244	301	279	142	373		237		237	2,002
	Piney Narrows Yacht Haven							261					190	451
	Queen Anne's Pub landing	541	332	213	285	450	427	399	487	431	398	534	341	4,838
Somerset County	Chance Transfer Station			95			190	128	142		114			669
	City of Crisfield DPW			47										47
	Dublin-Costen TS			142	66			123	33					364
	Marion-Crisfield TS	261		214	237		190	309	214		142	180	104	1,851
	Mt Vernon Transfer Station			475	617			475	190		214		522	2,493
	Somers Cove Marina			389	66						427			882
	Somerset County Landfill								261					261

County	Location	January	February	March	April	May	June	July	August	September	October	November	December	Total
St Mary's County	Charlotte Hall Conv Center	693	840	731	1,230	1,069	1,035	1,007	855	1,045	532	1,149	351	10,537
	Clements Conv Center	550	309	817	541	716	702	475	684	569	551	921	247	7,082
	Maryland Intern Raceway						1045				912			1,957
	Oakville Conv Center	389	413	332	513	527	323	494	598	598	570	589	180	5,526
	Ridge Conv Center	95	214	114	142	142	247	332	161	284	123	332	94	2,280
	St Andrew Conv Center	822	765	622	1,107	1,231	1,244	907	1,016	1,026	1,030	1,111	646	11,527
	St Andrew Vehide Main	152	209	247	275	210	199	171	152	142	137	161	190	2,245
	Valley Lee Conv Center	209	337	332	494	514	408	474	446	493	475	437	133	4,752
Talbot County	Midshore Regional Landfill		237		285	465	475		333		427		285	2,507
	Dogwood Harbor		142	213	95		166		218			119		953
	Bellevue Landing					113	104		60			95		372
	Neavitt Landing		114	47		67	190		166	142	104	109		939
	Oak Creek Landing	214	95	119	123	352	142	460	148	190	261	95		2,199
	Trappe Landing				261			261	166	66		190		944
Washington County	Dangan Transfer Station					203		237	214		95			749
	Greensburg TS	261	119	166	237	237	261	190	166	237	214	190	95	2,373
	Hancock Landfill				237			169	71				214	691
	Kaetzel Transfer Station	237	95	166	190	190	71			190	190	119	95	1,543
	40 West Landfill	712	261	404	665	1,249	499	1,282	218	1,282	641	475	759	8,447
	Town of Boonsboro			380						332				712
Wicomico County	Airport Transfer Station	237		123		135		261			190			946
	Bivalve Transfer Station	171			190				66					427
	Delmar Transfer Station	142			190		190		47		190		38	797
	Fruitland Transfer Station	142			261			261		237		214	119	1,234
	Hebron Transfer Station			256		90			166			214		726
	Mardela Springs TS	142			261				214				142	759
	Newland Park Landfill			437										437
	Parsonsburg TS	247		123		248	261		237		190		237	1,543
	Quantico Transfer Station	171				126		261						558
	Sharptown Transfer Station					225	237		142					604
	Wango Transfer Station				261			261			237			759
	Wicomico Cty Divison of SW	641	1,427	57	522	1,050	1,168	902	774	1,330	1,710	855	855	11,291
Worcester County	Berlin Transfer Station	380	380	417	71	671	641	460	261	570	261	670	261	5,043
	Central Landfill			375				332		190		190		1,087
	Pocomoke Transfer Station			421				475		71		356		1,323
	Snow Hill Transfer Station							261		223		252		736
	Worcester County DPW									62				62
		January	February	March	April	May	June	July	August	September	October	November	December	2019 Totals
Total Gallons		24,237	18,851	28,631	34,667	40,124	30,934	37,095	31,520	32,807	32,102	26,042	22,090	359,100

Maryland Environmental Service
2019 Antifreeze Collection Report (gallons)

County	Location	January	February	March	April	May	June	July	August	September	October	November	December	Total
Allegheny County	Allegheny County Road's													0
	Allegheny County SWTF													0
	Allegheny County Transit													0
	Flintstone SW Collection													0
	Mountainview LF									150	165			315
	Penn Mar Recycling					225				50	200			475
Anne Arundel County	Annapolis Landing Marina											55		55
	Casa Rio Marina								55					55
	Crownsville Hospital													0
	Magothy Marina													0
	Port Annapolis													0
	Mears Marina													0
	White Rocks Yacht Center													0
	Hidden Harbor Marina													0
Baltimore City	Eastern Sanitation Yard													0
	Northwest Sanitation Yard													0
	Northwest Transfer Station													0
	Quarantine Road Landfill													0
	Western Sanitation Yard													0
	Balti City Western Accept						425							425
	Bowley's Marina													0
Caroline County	Holly Collection Site			250				200			120		100	670
	Melville Collection Site							40						40
	Midshore II Regional Landfill													0
	Old Denton Collection Site													0
	Preston Collection Site													0
	Denton Dept Public Works													0
Carroll County	Carroll County Fleet													0
	City of Taneytown Recycling													0
	City of Westminster				200									200
	Hamstead Maintenance										250			250
	Hoodsmill													0
	Northern Landfill		225	250	250	250	250	250	225	250	250	500		2,700
	Town of Sykesville		250				200				250			700
	City of Manchester				200				225	225				650
Cecil County	Cecil County Landfill				400			275			200	200	200	1,275
	Locust Point Marina													0
	Stemmers Run TS													0
	Town of Elkton Public Works										160			160
	Woodlawn Transfer Station			200				200						400
	Bohemia Vista Marina													0
Dorchester County	Beulah Landfill										100			100
	Cambridge WWTP													0
	City of Cambridge	250							250		100			600
	Golden Hill Landfill													0
	Secretary Transfer Station		55								40			95

County	Location	January	February	March	April	May	June	July	August	September	October	November	December	Total
St Mary's County	Charlotte Hall Conv Center	250			320		170		150	110			175	1,175
	Clements Conv Center				180				100	55			220	555
	Maryland Inter Raceway													0
	Oakville Conv Center				160				80				220	460
	Ridge Conv Center				110	110			75				70	365
	St Andrew Conv Center	250			200		155		180	150			170	1,105
	St Andrew Vehide Main				50				60				70	180
	Valley Lee Conv Center				150				165	55			50	420
Talbot County	Midshore Regional Landfill		200								250			450
	Dogwood Harbor													0
	Bellevue Landing													0
	Neavitt Landing													0
	Oak Creek Landing													0
	Trappe Landing													0
Washington County	Dargan Transfer Station										50			50
	Greensburg TS	50			50					100				200
	Hancock Landfill												100	100
	Kaetzal Transfer Station				50									50
	40West Landfill		250				300				350			900
	Town of Boonsboro													0
Wicomico County	Airport Transfer Station				55									55
	Bivalve Transfer Station				55									55
	Delmar Transfer Station													0
	Fruitland Transfer Station	55									55			110
	Hebron Transfer Station	25									100			125
	Mardela Springs TS	55												55
	Newland Park Landfill			400							200			600
	Parsonsburg TS										55			55
	Quantico Transfer Station													0
	Sharptown Transfer Station		55											55
	Wango Transfer Station													0
Wicomico Cty Divison of SW								450		275			725	
Worcester County	Berlin Transfer Station													0
	Central Landfill													0
	Pocomoke Transfer Station													0
	Snow Hill Transfer Station													0
	Worcester County DPW													0
		January	February	March	April	May	June	July	August	September	October	November	December	2019 Totals
Total Gallons		1,670	2,400	1,965	3,281	1,895	2,800	1,845	3,440	2,145	4,595	1,720	2,930	30,686