



**Maryland**  
Department of  
the Environment

Larry Hogan, Governor  
Boyd K. Rutherford, Lt. Governor

Ben Grumbles, Secretary  
Horacio Tablada, Deputy Secretary

February 26, 2021

The Honorable Bill Ferguson, President  
Senate of Maryland  
State House, H-107  
Annapolis, MD 21401-1991

The Honorable Adrienne Jones, Speaker  
House of Delegates  
State House, H-101  
Annapolis, MD 21401-1991

Dear President Ferguson and Speaker Jones:

As required in Section 5-1001(g) of the Environment Article, *Annotated Code of Maryland*, I am enclosing a copy of the Calendar Year 2017 Annual Report of the Maryland Used Motor Oil Recycling Program.

If the Department can provide you with any additional information, please contact me or Ms. Kaley Laleker, Director of the Land and Materials Administration, at 410-537-3304 or via email at [kaley.laleker@maryland.gov](mailto:kaley.laleker@maryland.gov).

Sincerely,

A handwritten signature in black ink that reads "Ben Grumbles". The signature is written in a cursive style.

Ben Grumbles  
Secretary

Enclosures

cc: Kaley Laleker, Director, Land and Materials Administration  
Sarah Albert, Maryland Department of Legislative Services



**Maryland**  
Department of  
the Environment

## **MARYLAND USED OIL RECYCLING PROGRAM (CY17 DATA)**

Prepared by:  
Land and Materials Administration  
Resource Management Program

Prepared for:  
Senate Education, Health, and Environmental Affairs Committee

House Environment and Transportation Committee

Larry Hogan, Governor  
State of Maryland

Boyd K. Rutherford, Lt. Governor  
State of Maryland

Bill Ferguson, Senate President  
Maryland General Assembly

Adrienne A. Jones, House Speaker  
Maryland General Assembly

August 2020

MARYLAND DEPARTMENT OF THE ENVIRONMENT  
1800 Washington Boulevard | Baltimore, MD 21230 | [mde.maryland.gov](http://mde.maryland.gov)  
410-537-3314 | 800-633-6101 x3314 | TTY Users: 7-1-1  
Larry Hogan, Governor | Boyd K. Rutherford, Lt. Governor | Ben Grumbles, Secretary

Page Left Intentionally Blank

## **EXECUTIVE SUMMARY**

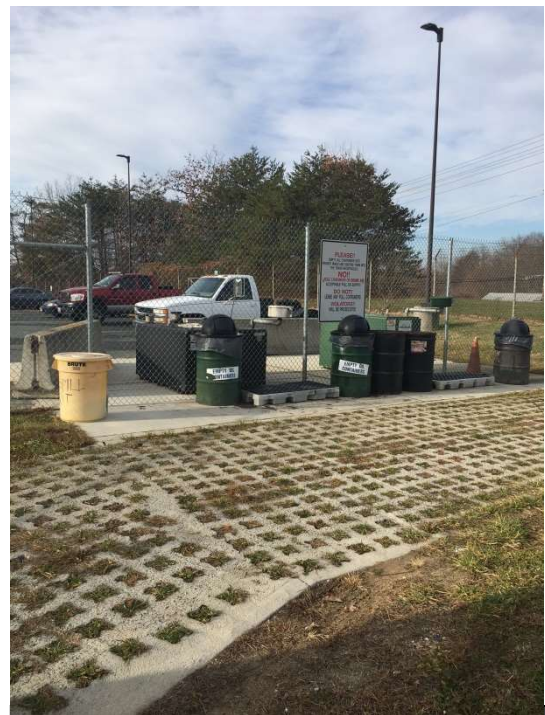
The Maryland Used Oil Recycling Program (the Program) is administered by the Maryland Department of the Environment (MDE) through a memorandum of understanding (MOU) with the Maryland Environmental Service (MES). The authority for the Maryland Used Oil Recycling Program is found in Section 5-1001 of the Environment Article of the Maryland Annotated Code, the *Maryland Used Oil Recycling Act*.

MES is responsible for implementing a statewide program for the construction, operation, and the routine maintenance of used oil collection facilities; providing public education and outreach programs related to the disposal of used oil; and maintaining an information center to educate citizens regarding the proper disposal of used oil. Additionally, MES utilizes the collection sites for the collection of related recyclables including used antifreeze and used oil filters.

MES also administers funding for the purpose of implementing supplemental environmental projects. Specifically, this grant funding is used to assist in the construction of rain shelters to minimize storm water contact with the used oil collection tanks and is also used to fund the purchase of above-ground storage tanks for new sites, as well as replacements for older sites.

Since 1988, the Program has collected and recycled nearly 17.6 million gallons of used oil in the state. Similarly, the Program has collected and recycled over 939,000 gallons of used antifreeze from Maryland do-it-yourself automobile and boating enthusiasts.

During the 2017 calendar year, 455,729 gallons of used oil and 29,317 gallons of used antifreeze were collected from Program-sponsored locations. Additionally, during this period, over 150 drums of used oil filters were collected for recycling.



Abingdon, Harford County

## **INTRODUCTION**

The 2017 Maryland Used Oil Recycling Program Annual Report is provided to the Maryland General Assembly as required by Section 5-1001(g) of the Environment Article, the *Maryland Used Oil Recycling Act*.

The Maryland Used Oil Recycling Program (the Program) is administered by the Maryland Department of the Environment (MDE) through a memorandum of understanding (MOU) with the Maryland Environmental Service (MES). MES designates used oil collection facilities, offers technical and financial assistance to establish collection facilities, routinely inspects and cleans Program-sponsored facilities, provides public education, operates an information center, and implements other non-regulatory provisions of the *Maryland Used Oil Recycling Act*. The Department and MES are pleased to provide the following report detailing the accomplishments, initiatives, and progress of the Program during calendar year 2017 as well as plans for calendar year 2018.

## **BACKGROUND**

The Program was created by the *Maryland Used Oil Recycling Act*, which was enacted in July 1978. Initial start-up funding for the Program was allocated from energy funds. This funding enabled the creation of a program to assist the home mechanic with proper used oil disposal. Farmers and boat owners at marinas also used these facilities for their oil recycling.



MES purchased oil collection tanks, collection boxes, hardware, and signs. County and local governments were solicited to assist in establishing convenient and accessible used oil collection sites for citizens. A variety of collection sites were established. Most are located at government-owned solid waste, public works, and road maintenance facilities.

The Program has been successful at recruiting and maintaining donor locations for several reasons: 1) free collection service of used oil; 2) Program-provided financial assistance for tanks and shelters; and 3) the Program assumes the responsibility for disposing of any contaminated used oil.

## **2017 PROGRAM UPDATES AND ACCOMPLISHMENTS**

Since its inception in 1988, the Program has expanded from 44 collection sites to the current 131 operational sites and has recycled more than 17.6 million gallons of used oil over this time period. Collection of used oil from all Program locations yielded 455,729 gallons of used oil in calendar year 2017. This was a 9.2 percent decrease from the 501,746 gallons collected in 2016. This decrease was largely due to Baltimore County removing eight sites from the collection program effective July 1, 2017. Historical used oil and antifreeze annual collection results are summarized in graphs at the end of the report (Pages 6 and 7). Spreadsheets of the detailed used oil and antifreeze collection records for the participating Program sites are attached as well (Appendix A).

## **Key Updates and Accomplishments**

- Collected and recycled 455,729 gallons of used oil.
  - Decreased from 2016, primarily due to Baltimore County removing eight collection sites from the program as of July 1, 2017.
- Collected and recycled 29,317 gallons of used antifreeze.
- Replaced over three dozen antifreeze drums.
- Collected and recycled 154 drums of used oil filters.
- Upgraded or replaced older above-ground storage tanks at two locations.
  - New 275-gallon tank installed at the Somers Cove Marina in Somerset County.
  - Oil tank was replaced at the Greenburg Transfer Station in Washington County.
- Repaired or upgraded secondary containments at two locations.
  - New fill boxes added to sites in Washington County.
  - New fill boxes added at the Jarrettsville site in Harford County.
  - Added spill pallets to the Preston site in Caroline County.
- Performed supplementary cleaning and maintenance at Program-sponsored locations during the year.
  - Eight Harford County sites cleaned twice weekly (through an independent agreement between MES and Harford County).
  - All Somerset County tanks were repainted.
  - Replaced gauges at the Aberdeen, Allegany, and Talbot County sites.
  - Completed the tank removal and remediation of the Fort Washington Marina site.
  - Replaced a broken float at the Annapolis Junction collection site.



## **Administration**

The Program cost to MDE for state FY17 was \$79,883.84. MDE approved \$99,746.00 for MES to implement the Program in FY18.

## **Operation and Maintenance**

Good housekeeping practices are important aspects of spill control and contamination prevention. As part of its management of the Program, MES has conducted on-site audits of all Program-sponsored collection facilities to ensure that sponsors, recycling coordinators, site supervisors, and site operational staff are aware of their pollution prevention responsibilities. Additionally, MES staff conducted routine cleaning and maintenance, as necessary, to assist the site hosts in maintaining environmental compliance. During the 2017 calendar year, MES performed supplementary cleaning and maintenance at most Program-sponsored locations.

MES continually reminds all site hosts that they are responsible for providing day-to-day monitoring and housekeeping of their tanks. MES staff assists with housekeeping and compliance as needed, based on the results of the routine site inspections. MES maintains a full-time staff to conduct routine site audits and assist with site maintenance and cleaning. Sites are upgraded, as needed, to increase compliance and minimize the potential for impacts to the environment.



Somer's Cove, Somerset County

Given the concern over proper disposal of used oil, contaminated oil, and unauthorized dumping of trash and hazardous materials, MES continues to urge site hosts to remain in the Program. Because used oil can be easily contaminated with polychlorinated biphenyls (PCBs), brake cleaning fluids, and other readily accessible chemicals, MES and MDE feel that citizens are better served by local governments staying within the established Program.

### **Public Outreach**

MES and the MDE each maintain a webpage with information related to the Program.

MES's webpage: <https://www.menv.com/services/108>

MDE's webpage:

<http://mde.maryland.gov/programs/Land/OilControl/Pages/UsedOilProgram.aspx>

From the MES webpage, Marylanders can find the public information number **800-4RECYCLE** (800-473-2925) and an email address to inquire about proper disposal of used oil and antifreeze. MES also has a listing of collection sites by county. Over 350 calls were made to the public information number in 2017, with the majority of callers requesting information on used oil collection locations.

During the 2017 calendar year, brochures providing information to the public about the importance of proper handling, disposal, and recycling of used oil and antifreeze were circulated at local recycling trade shows and conferences.

## **PLANNED ACTIVITIES FOR 2018**

### **Administration**

- MDE will continue to fund the Program and MES will continue to implement the Program.
- MES will continue the grant program to assist locations in upgrading existing sites.

### **Operation and Maintenance**

- MES will continue annual inspections of all Program-participating sites in order to ensure continued protection of the environment.
- MES will continue the routine maintenance and cleaning program to ensure safe operation at participating sites.
- MES will continue the tank upgrade program by replacing single-wall 275-gallon tanks with new, more environmentally protective double-wall tanks.
- MES will explore ways to improve automated monitoring of participating sites to deter abuse of the facilities.

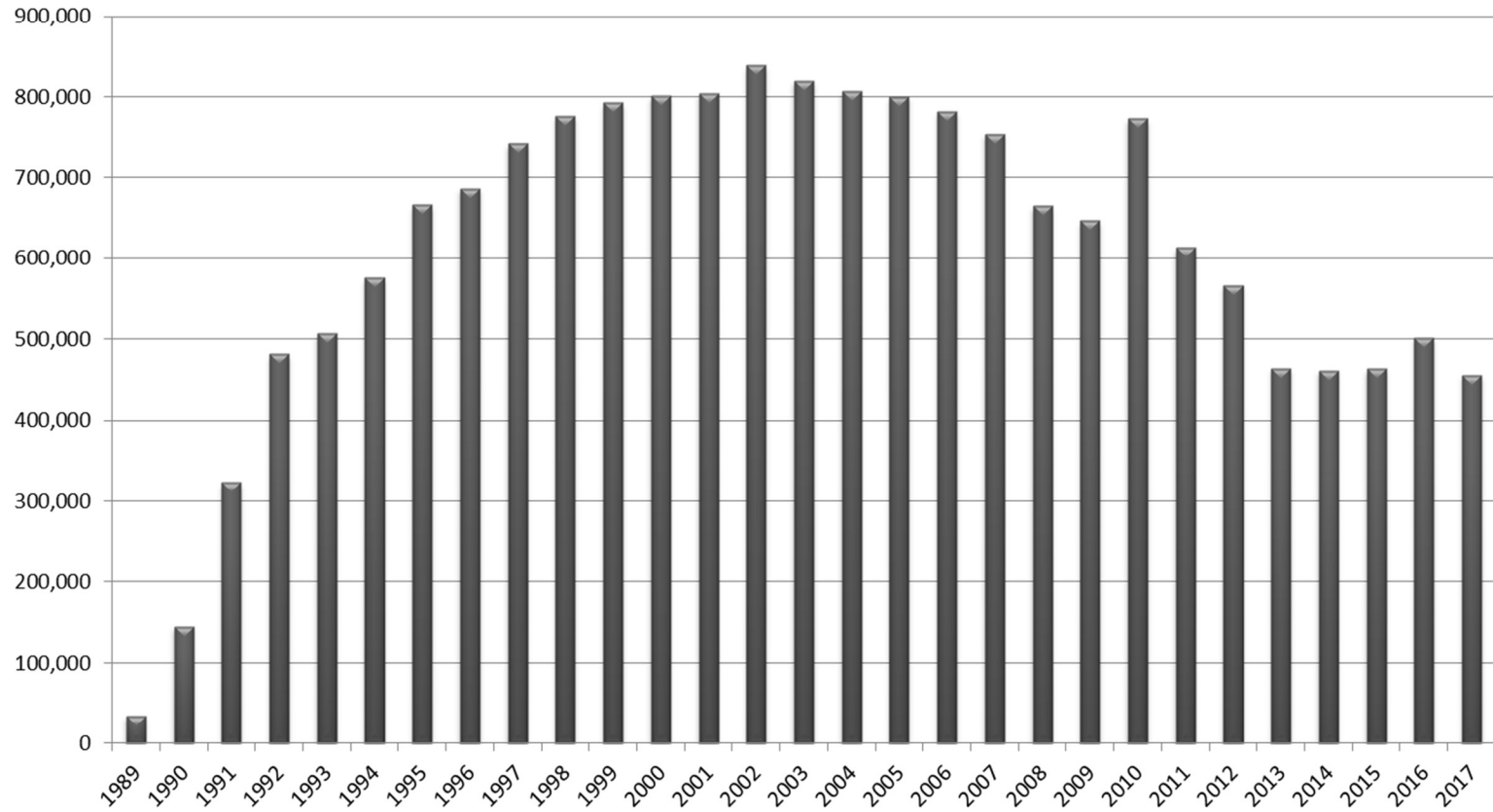
### **Public Outreach**

- MES will continue updating and linking the used oil recycling pages on MES will continue public outreach and education at local county events.
- MES will present Program updates to statewide solid waste managers and recycling coordinators.
- MES will continue membership in the Association of Responsible Recyclers while updating Program participants and citizens with current information, issues, and trends within the industry.
- MES will explore additional ways to market the Program to the public.



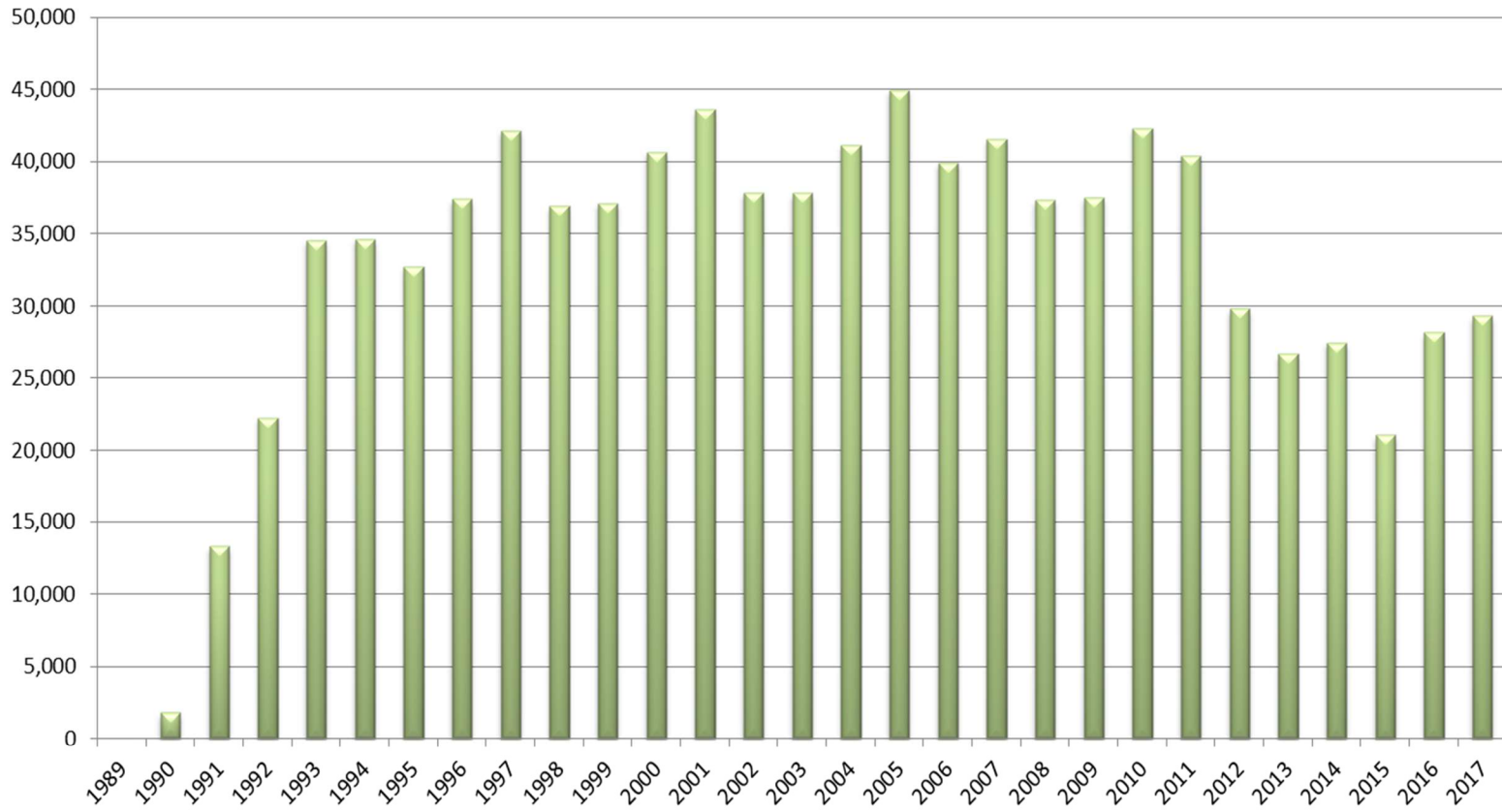
# ANNUAL MES USED OIL RECOVERY

## DIY Oil Collection Sites (gallons)



# ANNUAL MES USED ANTIFREEZE RECOVERY

## DIY Oil Collection Sites (gallons)



APPENDIX A

USED OIL and ANTIFREEZE COLLECTION DATA

CY17



<b>LOCATIONS</b>	Jan	Feb	Mar	Apr	May	Jun	Jul	Aug	Sep	Oct	Nov	Dec
Port Annapolis Marina		130				250						
White Rocks Yachting Center					222							
<b>ANNE ARUNDEL CO TOTAL</b>	<b>490</b>	<b>280</b>	<b>0</b>	<b>952</b>	<b>1,232</b>	<b>970</b>	<b>0</b>	<b>0</b>	<b>300</b>	<b>875</b>	<b>1,170</b>	<b>325</b>
<b>BALTIMORE CITY</b>												
Eastern Sanitation Yard		140		167								
Northwest Sanitation Yard	120			370			400	400		500	500	
Northwest Transfer Station										250		
Quarantine Road Landfill		595										
Western Dist. Sanitation Yard		235	825	60	1,600							
<b>BALTIMORE CITY TOTAL</b>	<b>120</b>	<b>970</b>	<b>825</b>	<b>597</b>	<b>1,600</b>	<b>0</b>	<b>400</b>	<b>400</b>	<b>0</b>	<b>750</b>	<b>500</b>	<b>0</b>
<b>BALTIMORE COUNTY</b>												
11th District Hwy Shed												
6th Dist. Hwy. Shed, Freeland	521	277			1,010	500	450	1,130	485			
7th Dist. Hwy. Shed, White Hall		250		502	490		550		620			
BA Co. Resource Recovery Facility	1,811	1,992	1,590	1,520								
Balto Co Equip (DAYS COVE RD)							5,065	3,520				
Bowleys Quarters Marina	195					225					275	
Eastern Sanitary Landfill	2,442	2,290	250		4,850	2,850	165	75	100	75		
Western Acceptance Facility	545	945		475		575	1,325	500	675	1,710	975	300
<b>BALTIMORE CO TOTAL</b>	<b>5,514</b>	<b>5,754</b>	<b>1,840</b>	<b>2,497</b>	<b>6,350</b>	<b>4,150</b>	<b>7,555</b>	<b>5,225</b>	<b>1,880</b>	<b>1,785</b>	<b>1,250</b>	<b>300</b>
<b>CALVERT</b>												
Appeal Solid Waste Mgmt Facility	550	240	510	300	480	485	485	825	310	565	400	375

<b>LOCATIONS</b>	Jan	Feb	Mar	Apr	May	Jun	Jul	Aug	Sep	Oct	Nov	Dec
Ball Rd Waste Compactor Site	660	360	395	200	565	545	585	775	450	500	300	375
Barstow Compactor Site (LF)	280	490	175	175	490	260	330	585	355	465	400	150
Huntingtown Compactor Site	300	375	190	175		320	445	630	375	320	282	250
Lusby Waste Compactor Site	180	200	370	250		495	460	385	235	400	350	175
Mt. Hope Waste Compactor Site	1,085	1,250	495	660	450	575	835	1,345	900	960	1,425	750
Plum Point Rd Compactor Site	380	250	415	175		575	425	555	300	520	650	275
<b>CALVERT CO TOTAL</b>	<b>3,435</b>	<b>3,165</b>	<b>2,550</b>	<b>1,935</b>	<b>1,985</b>	<b>3,255</b>	<b>3,565</b>	<b>5,100</b>	<b>2,925</b>	<b>3,730</b>	<b>3,807</b>	<b>2,350</b>
<b>CAROLINE</b>												
Holly Collection Site (Ridgely)	475	875		156	421	477	860	405	500	809	343	312
Melville Collection Site		250							200			
Midshore II LF (MES)							392		301			
Old Denton Collection Site						400					225	
Preston Collection Site				275					250			
<b>CAROLINE CO TOTAL</b>	<b>475</b>	<b>1,125</b>	<b>0</b>	<b>431</b>	<b>421</b>	<b>877</b>	<b>1,252</b>	<b>405</b>	<b>1,251</b>	<b>809</b>	<b>568</b>	<b>312</b>
<b>CARROLL</b>												
City of Taneytown	200	550					400	425		325	300	300
City of Westminster	650	1,000		1,225	400	500	400		800	275	475	
Hoods Mill	500				550			600			550	
MT Airy Maintenance Facility (MES)					1,850		1,500	1,650	1,225	1,200	1,150	750
Northern Landfill	1,200	1,800			3,325	1,775	2,850	2,700	2,275	2,650	1,565	1,475
Town of Hampstead	50	400			325	175	350	600	225	225	400	150
Town of Manchester	150	650										
Town of Sykesville	400	850	675	600	1,600	500	625	750	725	625	750	450
<b>CARROLL CO TOTAL</b>	<b>3,150</b>	<b>5,250</b>	<b>675</b>	<b>1,825</b>	<b>8,050</b>	<b>2,950</b>	<b>6,125</b>	<b>6,725</b>	<b>5,250</b>	<b>5,300</b>	<b>5,190</b>	<b>3,125</b>

<b>LOCATIONS</b>	Jan	Feb	Mar	Apr	May	Jun	Jul	Aug	Sep	Oct	Nov	Dec
<b>CECIL</b>												
Bohemia Vista Marina									215			
Cecil County Landfill	650		1,000	1,290	490	260	1,115	2,050	900	1,440	1,190	700
Locust Point Marina												
Stemmer's Run Transfer Station			400			475		425		500		300
Town of Elkton		250		310	450		175		550			395
Woodlawn Transfer Station	500	400	350			450	750	400	700	300	875	275
<b>CECIL CO TOTAL</b>	<b>1,150</b>	<b>650</b>	<b>1,750</b>	<b>1,600</b>	<b>940</b>	<b>1,185</b>	<b>2,040</b>	<b>2,875</b>	<b>2,365</b>	<b>2,240</b>	<b>2,065</b>	<b>1,670</b>
<b>DORCHESTER</b>												
Beulah Landfill									989			
Cambridge DPW	300		315	280	650	263	212	406	372	242	489	230
Golden Hill T.S.		75	550				400					560
Secretary		250						250		250		243
<b>DORCHESTER CO TOTAL</b>	<b>300</b>	<b>325</b>	<b>865</b>	<b>280</b>	<b>650</b>	<b>263</b>	<b>612</b>	<b>656</b>	<b>1,361</b>	<b>492</b>	<b>489</b>	<b>1,033</b>
<b>FREDERICK</b>												
Brunswick Public Works Garage	200	750		500	500	450	500	300	425	350	425	250
Ingrahm Shell		150					1,925	2,425	1,650	2,025	2,900	575
Mt. Airy Maint Facility	1,400	1,100		750	1,850	1,000						
Town of Thurmont	200	450		500	250	250						
Frederick County Recycling Center	1,600	2,200	1,125	1,850	2,475	2,150	300	700	500	425		275
Walkersville												
<b>FREDERICK CO TOTAL</b>	<b>3,400</b>	<b>4,650</b>	<b>1,125</b>	<b>3,600</b>	<b>5,075</b>	<b>3,850</b>	<b>2,725</b>	<b>3,425</b>	<b>2,575</b>	<b>2,800</b>	<b>3,325</b>	<b>1,100</b>

<b>LOCATIONS</b>	Jan	Feb	Mar	Apr	May	Jun	Jul	Aug	Sep	Oct	Nov	Dec
<b>GARRETT</b>												
Bumble Bee		475		155						400		
Garrett Co. Landfill, Oakland				563						150		
Garrett Highway Site				388						550		
Grantsville		450		155						600		
Kings Run Site				443						450		
Rt. 135 Collection Site				450						322		
Weber's Solid Waste Collection Site												
<b>GARRETT CO TOTAL</b>	<b>0</b>	<b>925</b>	<b>0</b>	<b>2,154</b>	<b>0</b>	<b>0</b>	<b>0</b>	<b>0</b>	<b>0</b>	<b>2,472</b>	<b>0</b>	<b>0</b>
<b>HARFORD</b>												
Abingdon Hwy. Dist. Shop	441	421	70	520	425	235	340	360	525	400	515	175
Aldino Hwy. Dist. Shop, Churchville	597	421	210	600	390	340	300	575	250	325	670	300
City of Aberdeen, Public Works					75	400	300	400	540	400	125	350
City of Havre de Grace	112				140	119	180	195	125		100	100
Joppatowne	164	223		200	250	145	220	200			490	125
Norrisville Elem. School	166	552			838		400	460		500	425	
Scarboro Landfill	930	628	720	850	1,435	1,030	1,295	1,745	1,320	1,595	1,457	845
Silverman WWTP												
Town of Bel Air	847	533	550	570	635	645	830	825	700	681	755	340
Whiteford Hwy. Dist. Shop	896	423		500	935	250	425	530	760	960	490	
Jarrettsville Highway Shop	908	1,042	1,140	772	1,790	855	1,445	1,395	1,200	1,125	1,496	470
<b>HARFORD CO TOTAL</b>	<b>5,061</b>	<b>4,243</b>	<b>2,690</b>	<b>4,012</b>	<b>6,913</b>	<b>4,019</b>	<b>5,735</b>	<b>6,685</b>	<b>5,420</b>	<b>5,986</b>	<b>6,523</b>	<b>2,705</b>



<b>LOCATIONS</b>	Jan	Feb	Mar	Apr	May	Jun	Jul	Aug	Sep	Oct	Nov	Dec
<b>KENT</b>												
Haven Harbour Marina										600		
Duck Puddle Drop-Off Ctr (MES)			80		95			200		177		
Kent Co. Transfer Station, Galena		300	80									609
Nicholson Transfer Station			600	580	343			748	669			
Sharptown Transfer Station			250		412			218		209		
<b>KENT CO TOTAL</b>	<b>0</b>	<b>300</b>	<b>1,010</b>	<b>580</b>	<b>850</b>	<b>0</b>	<b>0</b>	<b>1,166</b>	<b>669</b>	<b>986</b>	<b>0</b>	<b>609</b>
<b>PRINCE GEORGE'S</b>												
Cheltenham WWTP (MES)							100					
City of Greenbelt	330	755	175	380	965	160	350	440	410	310	460	100
Town of Cheverly	250	150				250						
City of Laurel	700	450	260	505	670	650	1,115	515	635	415	340	865
City of Hyattsville	200						400	500	300		650	180
City of New Carrollton	575	605		600	550							
Ft. Washington Marina									135			
Town of Riverdale Park	425	100			300			240				260
Prince George's Co. MRF							250	115	150	120	120	125
<b>PRINCE GEORGE'S CO TOTAL</b>	<b>2,480</b>	<b>2,060</b>	<b>435</b>	<b>1,485</b>	<b>2,485</b>	<b>1,060</b>	<b>2,215</b>	<b>1,810</b>	<b>1,630</b>	<b>845</b>	<b>1,570</b>	<b>1,530</b>
<b>QUEEN ANNE'S</b>												
Batts Neck Transfer Station	800		600	546		620	500	233	405	400	312	
Centreville Transfer Station	425		400	330	312	296	654	343	249	250	343	530
Church Hill Transfer Station			400	203	265	140	171	233		280	156	
Glanding Transfer Station	375		335		500	156	171	343	280	124	187	

<b>LOCATIONS</b>	Jan	Feb	Mar	Apr	May	Jun	Jul	Aug	Sep	Oct	Nov	Dec
Grasonville Transfer Station	450		550	140	169	281	528	124	233	270	250	218
Piney Narrows Yacht									100			
Q.A. County Bay Bridge Airport												
Q.A. County Public Landing	400	425		902	425	421	400	400	453	781	250	145
<b>QUEEN ANNE'S CO TOTAL</b>	<b>2,450</b>	<b>425</b>	<b>2,285</b>	<b>2,121</b>	<b>1,671</b>	<b>1,914</b>	<b>2,424</b>	<b>1,676</b>	<b>1,720</b>	<b>2,105</b>	<b>1,498</b>	<b>893</b>
<b>SAINT MARY'S</b>												
Charlotte Hall Transfer Station	700	1,650	640	1,266	1,150	1,060	810	1,000	840	1,100	1,445	350
Clement's Transfer Station	700	640	550	745	700	535	565	540	550	850	1,085	325
Maryland International Raceway	720								620	620		
Oakville Transfer Station	360	480	460	550	370	490	570	490	480	650	875	275
Ridge Transfer Station	475	425	70	441	340	375	295	375	360	195	435	100
St. Mary's Vehicle Maintenance				170	700		300	200	280	100	125	
St. Andrews Transfer Station	840	975	1,360	1,400	1,715	550	1,075	1,110	1,000	875	1,175	
Valley Lee Transfer Station	330	375	495	459	535	480	460	380	320	470	810	250
<b>ST MARY'S CO TOTAL</b>	<b>4,125</b>	<b>4,545</b>	<b>3,575</b>	<b>5,031</b>	<b>5,510</b>	<b>3,490</b>	<b>4,075</b>	<b>4,095</b>	<b>4,450</b>	<b>4,860</b>	<b>5,950</b>	<b>1,300</b>
<b>SOMERSET</b>												
Chance Transfer Station			130			212			125		100	
City of Crisfield			50						300			
Dublin-Costen Transfer Station			275			132					100	
Marion-Crisfield Transfer Station		100	130		316		575				257	250
Mt. Vernon Transfer Station	300		395			464	550		250		377	

<b>LOCATIONS</b>	Jan	Feb	Mar	Apr	May	Jun	Jul	Aug	Sep	Oct	Nov	Dec
Somers Cove Marina			275							495	143	
Somerset County Landfill			270						250		80	
<b>SOMERSET CO TOTAL</b>	<b>300</b>	<b>100</b>	<b>1,525</b>	<b>0</b>	<b>316</b>	<b>808</b>	<b>1,125</b>	<b>0</b>	<b>925</b>	<b>495</b>	<b>1,057</b>	<b>250</b>
<b>TALBOT</b>												
Bellevue		275	110							222		
Dogwood Harbour			350					200	250	250		
Midshore I Landfill		425	200	253		386	400		233			
Neavitt			61					212			97	
Oak Creek		250	275	207	228		250	150	250	275	193	214
Trappe Landing	275		110				271		275			
<b>TALBOT CO TOTAL</b>	<b>275</b>	<b>950</b>	<b>1,106</b>	<b>460</b>	<b>228</b>	<b>386</b>	<b>921</b>	<b>562</b>	<b>1,008</b>	<b>747</b>	<b>290</b>	<b>214</b>
<b>WASHINGTON</b>												
Dargan Transfer Station				250				250			250	
Forty West Landfill (Lund)	600	550	400	1,150	400	700	775	800	800	1,000	1,100	
Greensburg Transfer Station	450	100		300	675	250	200	200	350	225	350	100
Hancock Landfill						275					500	
Kaetzel Transfer Station	200			300	425	200	200	200	150	200	300	100
Town of Boonsboro				1,000	50						500	
<b>WASHINGTON CO TOTAL</b>	<b>1,250</b>	<b>650</b>	<b>400</b>	<b>3,000</b>	<b>1,550</b>	<b>1,425</b>	<b>1,175</b>	<b>1,450</b>	<b>1,300</b>	<b>1,425</b>	<b>3,000</b>	<b>200</b>
<b>WICOMICO</b>												
Airport T.S.	225		140		233		261			200		
Allen Transfer Station (Fruitland)		275		275		222	166			200		
Bivalve T.S.				275					275	200		
Blackwater T.S. Delmar TS			200		212					200		
Hebron T.S.			365			189		178				

<b>LOCATIONS</b>	Jan	Feb	Mar	Apr	May	Jun	Jul	Aug	Sep	Oct	Nov	Dec
Mardela T.S.		175					268			200		
New Land Park Landfill T.S.		2,400				1,082						
Parsonsborg T.S.	250			275		243	222		233	200		261
Quantico T.S.				189			189					
Sharptown T.S.	250						275			189		
Wango T.S.			225							275		
Wicomico Cty SW & Recycling (MES)							933	1,320	876	1,315	848	471
Wicomico Rec & Parks				1,371	2,156							
<b>WICOMICO CO TOTAL</b>	<b>725</b>	<b>2,850</b>	<b>930</b>	<b>2,385</b>	<b>2,601</b>	<b>1,736</b>	<b>2,314</b>	<b>1,498</b>	<b>1,384</b>	<b>2,979</b>	<b>848</b>	<b>732</b>
<b>WORCESTER</b>												
Berlin Transfer Station	500	500	190		550	600	319		233	929		938
Central Landfill, Newark		500	220			264			218			189
Dublin - Costen TS (MES)									250			
Pocomoke Public Landfill			440		430				468	160		275
Snow Hill Transfer Station	200		210		189		275		261	190		250
Worcester County DPW	150		125						243	87		153
<b>WORCHESTER CO TOTAL</b>	<b>850</b>	<b>1,000</b>	<b>1,185</b>	<b>0</b>	<b>1,169</b>	<b>864</b>	<b>594</b>	<b>0</b>	<b>1,673</b>	<b>1,366</b>	<b>0</b>	<b>1,805</b>
<b>STATE TOTAL</b>	<b>36,000</b>	<b>40,542</b>	<b>24,771</b>	<b>36,510</b>	<b>49,596</b>	<b>34,702</b>	<b>45,829</b>	<b>43,753</b>	<b>40,106</b>	<b>43,047</b>	<b>40,420</b>	<b>20,453</b>



<b>LOCATIONS</b>	Jan	Feb	Mar	Apr	May	Jun	Jul	Aug	Sep	Oct	Nov	Dec
Quarantine Road Landfill												
Northwest Transfer Station												
<b>BALTIMORE CITY TOTAL</b>	-	-	-	-	-	-	-	-	-	-	-	-
<b>BALTIMORE COUNTY</b>												
Eastern Sanitary Landfill	238	778										
Western Acceptance Facility	370						350					
BA Co. Resource Recovery Facility	341	660			500	400	400				350	
7th Dist. Hwy. Shed, White Hall												
Bowleys Quarters Marina	105											
6th Dist. Hwy. Shed, Freeland										70		
11th District Hwy Shed												
<b>BALTIMORE CO TOTAL</b>	<b>1,054</b>	<b>1,438</b>	-	-	<b>500</b>	<b>400</b>	<b>750</b>	-	-	<b>70</b>	<b>350</b>	-
<b>CALVERT</b>												
Mt. Hope Waste Compactor Site			125		60	75			1	75		150
Ball Rd Waste Compactor Site					70	100			100	30		125
Huntingtown Compactor Site			125		100	200			1	35		125
Appeal Solid Waste Mgmt Facility			60		80	50			1	50		950
Lusby Waste Compactor Site			100		80				1	30		125
Barstow Compactor Site (LF)			125		70				1	35		75
Plum Point Rd Compactor Site					100	60			1	20		100
<b>CALVERT CO TOTAL</b>	-	-	<b>535</b>	-	<b>560</b>	<b>485</b>	-	-	<b>106</b>	<b>275</b>	-	<b>1,650</b>
<b>CAROLINE</b>												
Melville Collection Site											100	
Preston Collection Site											100	
Holly Collection Site (Ridgely)	275						275					



<b>LOCATIONS</b>	Jan	Feb	Mar	Apr	May	Jun	Jul	Aug	Sep	Oct	Nov	Dec
Beulah Landfill												
Cambridge DPW												
<b>DORCHESTER CO TOTAL</b>	-	-	-	-	-	-	-	-	-	-	-	-
<b>FREDERICK</b>												
Frederick County Recycling Center		50		250	500	325				200	250	
Ingrahm Shell								400	150			
Town of Thurmont						100	150			55	110	
Brunswick Public Works Garage												
Walkersville												
<b>FREDERICK CO TOTAL</b>	-	<b>50</b>	-	<b>250</b>	<b>500</b>	<b>425</b>	<b>150</b>	<b>400</b>	<b>150</b>	<b>255</b>	<b>360</b>	-
<b>GARRETT</b>												
Weber's Solid Waste Collection Site												
Rt. 135 Collection Site									30			
Bumble Bee				35								
Grantsville				675					55			
Garrett Co. Landfill, Oakland				165								
Kings Run Site				220					35			
Garrett Highway Site				55					65			
<b>GARRETT CO TOTAL</b>	-	-	-	<b>1,150</b>	-	-	-	-	<b>185</b>	-	-	-
<b>HARFORD</b>												
Abingdon Hwy. Dist. Shop		81					150			65		
Aldino Hwy. Dist. Shop, Churchville				200			150					
City of Aberdeen, Public Works										150		
City of Havre de Grace												
Joppatowne		86								200		



<b>LOCATIONS</b>	Jan	Feb	Mar	Apr	May	Jun	Jul	Aug	Sep	Oct	Nov	Dec
Norrisville Elem. School												
Scarboro Landfill	158			250	100		270	150				
Silverman WWTP					55					150		
Town of Bel Air	317			200				275		200		220
Whiteford Hwy. Dist. Shop	197				150			300				
Jarrettsville Highway Shop		275		250			150					
<b>HARFORD CO TOTAL</b>	<b>672</b>	<b>442</b>	<b>-</b>	<b>900</b>	<b>305</b>	<b>-</b>	<b>720</b>	<b>725</b>	<b>-</b>	<b>765</b>	<b>-</b>	<b>220</b>
<b>KENT</b>												
Kent Co. Transfer Station, Galena												
Sharptown Transfer Station								120				
Haven Harbour Marina			75									
Nicholson Transfer Station							150					
<b>KENT CO TOTAL</b>	<b>-</b>	<b>-</b>	<b>75</b>	<b>-</b>	<b>-</b>	<b>-</b>	<b>150</b>	<b>120</b>	<b>-</b>	<b>-</b>	<b>-</b>	<b>-</b>
<b>PRINCE GEORGE'S</b>												
Town of Cheverly												
Town of Riverdale Park												
Ft. Washington Marina												
City of New Carrollton				55				110				
City of Hyattsville												
City of Greenbelt												
City of Laurel		100					220					
Prince George's Co. MRF												
<b>PRINCE GEORGE'S CO TOTAL</b>	<b>-</b>	<b>100</b>	<b>-</b>	<b>55</b>	<b>-</b>	<b>-</b>	<b>220</b>	<b>110</b>	<b>-</b>	<b>-</b>	<b>-</b>	<b>-</b>

<b>LOCATIONS</b>	Jan	Feb	Mar	Apr	May	Jun	Jul	Aug	Sep	Oct	Nov	Dec
<b>QUEEN ANNE'S</b>												
Centreville Transfer Station				200								
Q.A. County Public Landing												
Church Hill Transfer Station											55	
Grasonville Transfer Station				100							70	
Glanding Transfer Station				55							110	
Batts Neck Transfer Station				75								
Q.A. County Bay Bridge Airport												
Piney Narrows Yacht												
<b>QUEEN ANNE'S CO TOTAL</b>	-	-	-	<b>430</b>	-	-	-	-	-	-	<b>235</b>	-
<b>SAINT MARY'S</b>												
Charlotte Hall Transfer Station									200		350	140
Clement's Transfer Station									55			150
Maryland International Raceway												
Oakville Transfer Station									110			150
Ridge Transfer Station									130			80
St. Andrews Transfer Station									160			
St. Mary's Vehicle Maintenance								100	150			150
Valley Lee Transfer Station									55			100
<b>ST MARY'S CO TOTAL</b>	-	-	-	-	-	-	-	<b>100</b>	<b>860</b>	-	<b>350</b>	<b>770</b>
<b>SOMERSET</b>												
Chance Transfer Station												
Marion-Crisfield Transfer Station							100					
Somers Cove Marina												
Mt. Vernon Transfer Station							75					

<b>LOCATIONS</b>	Jan	Feb	Mar	Apr	May	Jun	Jul	Aug	Sep	Oct	Nov	Dec
Dublin-Costen Transfer Station												
Somerset County Landfill							60					
City of Crisfield												
<b>SOMERSET CO TOTAL</b>	-	-	-	-	-	-	<b>235</b>	-	-	-	-	-
<b>TALBOT</b>												
Dogwood Harbour												
Oak Creek						150						
<b>TALBOT CO TOTAL</b>	-	-	-	-	-	<b>150</b>	-	-	-	-	-	-
<b>WASHINGTON</b>												
Kaetzel Transfer Station									100			
Dargan Transfer Station					55							
Greensburg Transfer Station	50								50		50	
Forty West Landfill (Lund)		150				200			250			
Hancock Landfill						110						
Town of Boonsboro												
<b>WASHINGTON CO TOTAL</b>	<b>50</b>	<b>150</b>	-	-	<b>55</b>	<b>310</b>	-	-	<b>400</b>	-	<b>50</b>	-
<b>WICOMICO</b>												
Allen Transfer Station (Fruitland)							55					
Bivalve T.S.										55		
Mardela T.S.												
Wicomico Rec & Parks												
Blackwater T.S. Delmar TS										25		
Airport T.S.					55					55		
New Land Park Landfill T.S.												
Quantico T.S.							100					

<b>LOCATIONS</b>	Jan	Feb	Mar	Apr	May	Jun	Jul	Aug	Sep	Oct	Nov	Dec
Wango T.S.												
Hebron T.S.												
Parsonsborg T.S.				55						55		
Sharptown T.S.				100			150			500		
<b>WICOMICO CO TOTAL</b>	-	-	-	<b>155</b>	<b>55</b>	-	<b>305</b>	-	-	<b>690</b>	-	-
<b>WORCESTER</b>												
Central Landfill, Newark												
Snow Hill Transfer Station												
Berlin Transfer Station												
Pocomoke Public Landfill												
Worcester County DPW Maintenance												
<b>WORCHESTER CO TOTAL</b>	-	-	-	-	-	-	-	-	-	-	-	-
<b>STATE TOTAL</b>	<b>2,226</b>	<b>2,180</b>	<b>610</b>	<b>3,295</b>	<b>2,475</b>	<b>2,305</b>	<b>3,955</b>	<b>1,680</b>	<b>2,451</b>	<b>2,955</b>	<b>2,295</b>	<b>2,890</b>