



**Maryland**  
Department of  
the Environment

Larry Hogan, Governor  
Boyd K. Rutherford, Lt. Governor

Ben Grumbles, Secretary  
Horacio Tablada, Deputy Secretary

November 2, 2018

The Honorable Mike V. Miller, Jr., President  
Senate of Maryland  
State House, H-107  
Annapolis MD 21401-1991

The Honorable Michael E. Busch, Speaker  
House of Delegates  
State House, H-101  
Annapolis MD 21401-1991

The Honorable Joan Carter Conway, Chair  
Senate Education, Health and  
Environmental Affairs Committee  
Miller Senate Office Building  
2 West Wing  
11 Bladen Street  
Annapolis MD 21401-1991

The Honorable Kumar P. Barve, Chair  
Environment and Transportation Committee  
House of Delegates  
House Office Building, Room 251  
6 Bladen Street  
Annapolis MD 21401-1991

Dear President Miller, Speaker Busch, Chairs Conway and Barve:

As required in Section 5-1001 of the Environment Article, Annotated Code of Maryland, I am enclosing a copy of the 2016 report on the Maryland Used Motor Oil Recycling Program.

If the Department can provide you with any additional information, please contact me at 410-537-3304 or via email at [kaley.laleker@maryland.gov](mailto:kaley.laleker@maryland.gov).

Sincerely,

Kaley Laleker, Acting Director  
Land and Materials Administration

Enclosures

cc: Ben Grumbles, Secretary



Department of the Environment

## MARYLAND USED OIL RECYCLING PROGRAM (Calendar Year 2016 Data)

Prepared by:

Maryland Department of the Environment and  
Maryland Environmental Service

Prepared for:

Senate Education, Health, and Environmental Affairs Committee

House Environment and Transportation Committee

Larry Hogan, Governor  
State of Maryland

Boyd Rutherford, Lt. Governor  
State of Maryland

Thomas V. Mike Miller, Jr., Senate President  
Maryland General Assembly

Michael E. Busch, House Speaker  
Maryland General Assembly

October 2017



MARYLAND DEPARTMENT OF THE ENVIRONMENT  
1800 Washington Boulevard | Baltimore, MD 21230 | [www.mde.maryland.gov](http://www.mde.maryland.gov)  
410-537-3442 | 800-633-6101 x3442 | TTY Users: 800-735-2258  
Larry Hogan, Governor | Boyd K. Rutherford, Lt. Governor | Ben Grumbles, Secretary



Page Left Intentionally Blank

## EXECUTIVE SUMMARY

The Maryland Used Oil Recycling Program (the Program) is administered by the Maryland Department of the Environment (the Department) through a memorandum of understanding (MOU) with the Maryland Environmental Service (MES). The authority for the Maryland Used Oil Recycling Program is found in Section 5-1001 of the Environment Article of the Maryland Annotated Code, the *Maryland Used Oil Recycling Act*.

The MES is responsible for implementing a statewide program for the construction, operation, and the routine maintenance of used oil collection facilities; providing public education and outreach programs related to the disposal of used oil; and maintaining an information center to educate citizens regarding the proper disposal of used oil. Additionally, the MES utilizes the collection sites for the collection of related recyclables including used antifreeze and used oil filters.

The MES also administers funding for the purpose of implementing supplemental environmental projects. Specifically, this grant funding is used to assist in the construction of rain shelters to minimize stormwater contact with the used oil collection tanks, and is also used to fund the purchase of above-ground storage tanks for new sites, as well as replacements for older sites.

Since 1988, the Program has resulted in the collection and recycling of nearly 17.2 million gallons of used oil in the State of Maryland. Similarly, the Program has accomplished the collection and recycling of over 911,000 gallons of used antifreeze from Maryland do-it-yourself automobile and boating enthusiasts.

During the 2016 calendar year, 501,746 gallons of used oil and 28,138 gallons of used antifreeze were collected from Program-sponsored locations. Additionally, during this period, 280 drums of used oil filters were collected for recycling.



Scarboro Landfill (Harford County)

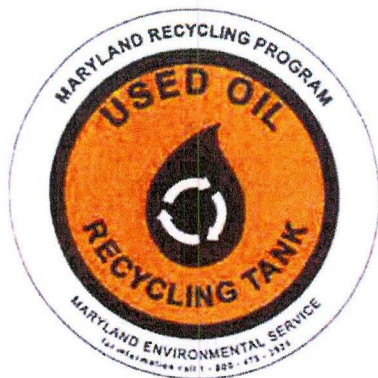
## **INTRODUCTION**

The 2016 Maryland Used Oil Recycling Program Annual Report is provided to the Maryland General Assembly as required by Section 5-1001(g) of the Environment Article, the *Maryland Used Oil Recycling Act*.

The Maryland Used Oil Recycling Program (the Program) is administered by the Maryland Department of the Environment (the Department) through a memorandum of understanding (MOU) with the Maryland Environmental Service (MES). The MES designates used oil collection facilities, offers technical and financial assistance to establish collection facilities, routinely inspects and cleans Program-sponsored facilities, provides public education, operates an information center, and implements other non-regulatory provisions of the *Maryland Used Oil Recycling Act*. The Department and the MES are pleased to provide the following report detailing the accomplishments, initiatives, and progress of the Program during calendar year 2016 as well as plans for calendar year 2017.

## **BACKGROUND**

The Program was created by the *Maryland Used Oil Recycling Act*, which was enacted in July 1978. Initial start-up funding for the Program was allocated from energy funds. This funding enabled the creation of a program to assist the home mechanic with proper used oil disposal. Farmers and boat owners at marinas also used these facilities for their oil recycling.



The MES purchased oil collection tanks, collection boxes, hardware, and signs. County and local governments were solicited to assist in establishing convenient and accessible used oil collection sites for citizens. A variety of collection sites were established. Most are located at government-owned solid waste, public works, and road maintenance facilities.

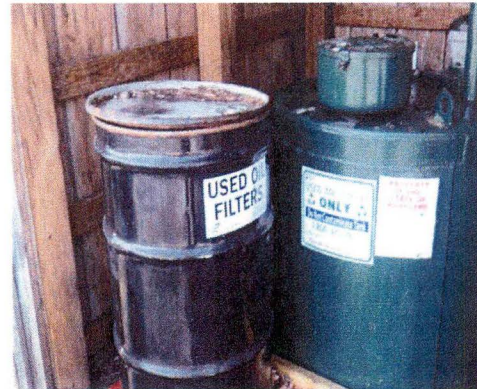
The Program has been successful at recruiting and maintaining donor locations for several reasons: 1) free collection service of used oil; 2) Program-provided financial assistance for tanks and shelters; and 3) the Program assumes the responsibility for disposing of any contaminated used oil.

## **2016 PROGRAM UPDATES AND ACCOMPLISHMENTS**

Collection of used oil from all Program locations yielded 501,746 gallons of used oil in calendar year 2016. This was an 8.3 percent increase from the 463,419 gallons collected in 2015. Since its inception in 1988, the Program has expanded from 44 collection sites to the current 139 operational sites and has recycled more than 17.2 million gallons of used oil over this time period. Historical used oil and antifreeze annual collection results are summarized in graphs at the end of the report (Pages 7 and 8). Spreadsheets of the detailed used oil and antifreeze collection records for the participating Program sites are attached as well (Appendix A).

## Key Updates and Accomplishments

- Collected and recycled 501,746 gallons of used oil.
  - Up from 2015.
- Collected and recycled 28,138 gallons of used antifreeze.
  - Replaced over three dozen antifreeze drums.
- Collected and recycled 280 drums of used oil filters.
- Added two new collection locations in Carroll County.
- Upgraded or replaced older above-ground storage tanks at three locations.
  - New 275-gallon tank installed at the Greenberg Transfer Station in Washington County.
  - New 275-gallon tank installed at the Town of Elkton in Cecil County.
  - MES tanks removed from Calvert County and replaced with County-owned tanks.
- Repaired or upgraded secondary containments at two locations.
  - New fill boxes added at the Hancock Landfill in Washington County.
  - New fill boxes added at the Ridge Convenience Center in St. Mary's County.
- Performed supplementary cleaning and maintenance at Program-sponsored locations during the year.
  - Eight Harford County sites cleaned twice weekly (through an independent agreement between MES and Harford County).
  - Reimbursed Piney Narrows Yacht Haven in Queen Anne's County for remediation activities.
  - New gauges installed at the Maryland International Raceway location in St. Mary's County.
  - New gauges installed and spill pellets placed at the Holly Road Homeowner Drop Off location in Caroline County.



Town of Sykesville (Carroll County)

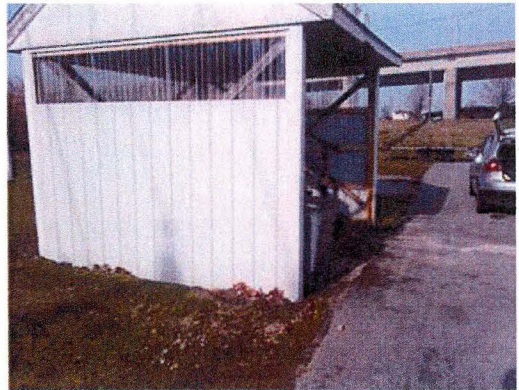
## Administration

Due to the price of oil in the market, used oil collection service providers are no longer paying for used oil and may even charge to pick up used oil. Because of this, the Program cost to the Department increased substantially for state fiscal year 2017 from the typical \$40,000 to \$79,883.84. The increased Program cost is expected to continue in fiscal year 2018.

## Operation and Maintenance

Good housekeeping practices are important aspects of spill control and contamination prevention. As part of its management of the Program, the MES has conducted on-site audits of all Program-sponsored collection facilities to ensure that sponsors, recycling coordinators, site supervisors, and site operational staff are aware of their pollution prevention responsibilities. Additionally, MES staff conducted routine cleaning and maintenance, as necessary, to assist the site hosts in maintaining environmental compliance. During the 2016 calendar year, MES performed supplementary cleaning and maintenance at Program-sponsored locations.

The MES continually reminds all site hosts that they are responsible for providing day-to-day monitoring and housekeeping of their tanks. MES staff provides assistance with housekeeping and compliance, as needed based on the results of the routine site inspections. The MES maintains a full-time staff to conduct routine site audits and assist with site maintenance and cleaning. Sites are upgraded, as needed, to increase compliance and minimize the potential for impacts to the environment.



Queen Anne's County Public Landing

Given the concern over proper disposal of used oil, contaminated oil, and unauthorized dumping of trash and hazardous materials, the MES continues to urge site hosts to remain in the Program. Due to the fact that the used oil can be easily contaminated with polychlorinated biphenyls (PCBs), brake cleaning fluids, and other readily accessible chemicals, the MES and the Department feel that citizens are better served by local governments staying within the established Program.

## Public Outreach

The MES and the Department each maintain a webpage with information related to the Program.

MES's webpage: <http://www.menv.com/pages/recycling/usedoil.html>

Department's webpage:

<http://mde.maryland.gov/programs/Land/OilControl/Pages/UsedOilProgram.aspx>

From the MES webpage, Marylanders can find the public information number **800-4RECYCLE** (800-473-2925) and an email address to inquire about proper disposal of used oil and antifreeze. The MES also has a listing of collection sites by county. Over 300 calls were made to the public information number in 2016, with the majority of callers requesting information on used oil collection locations.

During the 2016 calendar year, brochures providing information to the public about the importance of proper handling, disposal, and recycling of used oil and antifreeze were circulated at local recycling trade shows and conferences.

## **PLANNED ACTIVITIES FOR 2017**

### **Administration**

- The Department will continue to fund the Program and the MES will continue to implement the Program.
- The MES will continue the grant program to assist locations in funding construction of new sites and upgrading existing sites.

### **Operation and Maintenance**

- The MES will continue annual inspections of all Program-participating sites in order to ensure continued protection of the environment.
- The MES will continue the routine maintenance and cleaning program to ensure safe operation at participating sites.
- The MES will continue the tank upgrade program by replacing single-wall 275-gallon tanks with new, more environmentally protective double-wall tanks.
- The MES will explore ways to improve automated monitoring of participating sites to deter abuse of the facilities.

### **Public Outreach**

- The MES will continue updating and linking the used oil recycling pages on the MES webpage.
- The MES will continue public outreach and education at local county events.
- The MES will present Program updates to statewide solid waste managers and recycling coordinators.
- The MES will continue membership in the Association of Responsible Recyclers while updating Program participants and citizens with current information, issues, and trends within the industry.
- The MES will explore additional ways to market the Program to the public.





**USED OIL ONLY  
ACCEPTABLE FLUIDS**

USED MOTOR OIL

DIESEL FUEL

KEROSENE

TRANSMISSION FLUID

HYDRAULIC OIL

**DO NOT CONTAMINATE TANK**

*"Protect the Bay"*

USED ANTIFREEZE



**Do Not Contaminate Tank**

*"Keep the Chesapeake Bay Safe"*

**RECYCLE  
USED OIL  
FILTERS**



**USED OIL ONLY**

**NO GASOLINE**

**NO ANTIFREEZE**

**NO SOLVENTS**

**NO BRAKE FLUID**

**NO OIL MIXTURES**

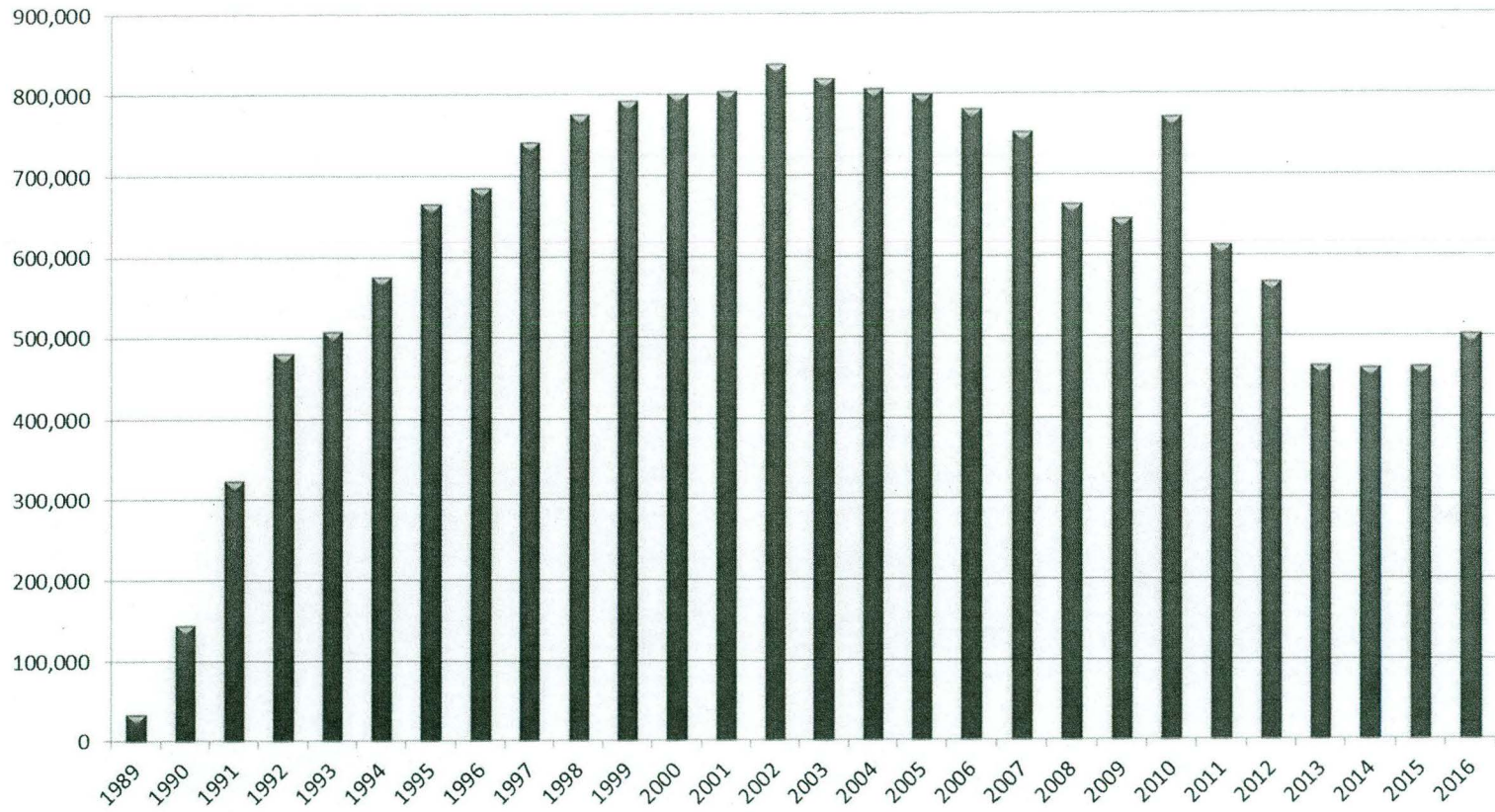
**NO REFRIGERATION OIL**

**NO VEGETABLE OIL**

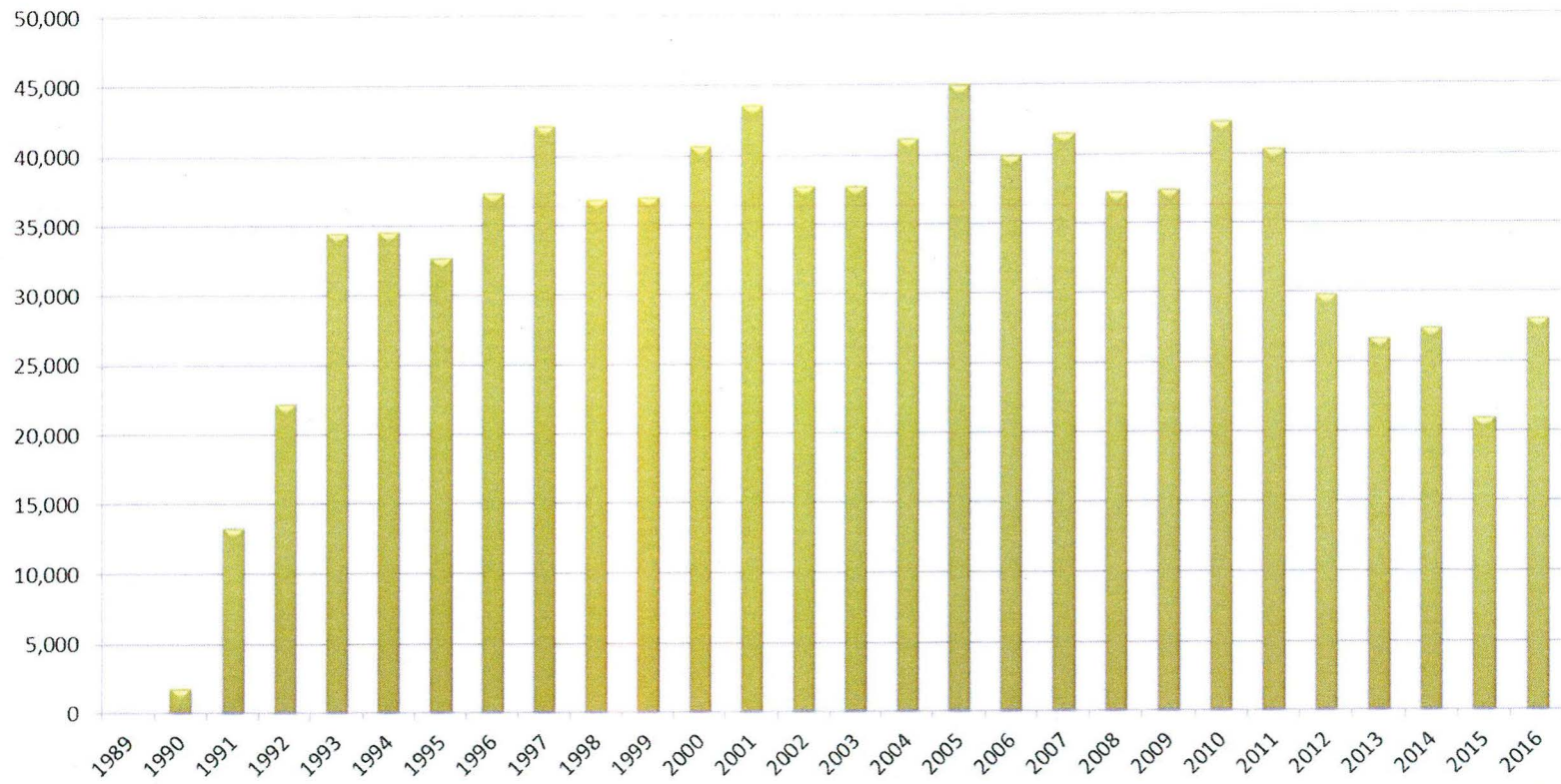
**DO NOT CONTAMINATE TANK**

*"No Spills - Protect the Bay"*

### ANNUAL MES USED OIL RECOVERY DIY Oil Collection Sites (gallons)



### ANNUAL MES USED ANTIFREEZE RECOVERY DIY Oil Collection Sites (gallons)



APPENDIX A

USED OIL and ANTIFREEZE COLLECTION DATA

2016

MARYLAND ENVIRONMENTAL SERVICE  
CY 2016  
Used Oil Collection Report

LOCATIONS		Jan	Feb	Mar	Apr	May	Jun	Jul	Aug	Sep	Oct	Nov	Dec	Total
<b>ALLEGANY</b>	<b>4</b>													-
Mountainview Landfill	82272901		400		400	500	400		450		400		450	3,000
Penn Mar Recycling Building	84006201		300	500	575	500	450		450	450		425		3,650
Allegany Co. Transfer Sta., Oldtown	84047017				250						275			525
Allegany Co. Flintstone Refuse Site	84047120				275						275			550
<b>ALLEGANY CO TOTAL</b>		-	700	500	1,500	1,000	850	-	900	450	950	425	450	7,725
<b>ANNE ARUNDEL</b>	<b>9</b>													-
Mears Marina	78343611													-
Annapolis Landing Marina	78343612			150			265	150	300				300	1,165
Port Annapolis Marina	78344201	110		120			255				270		200	955
Casa Rio Marina	78344302			235			265		275	265		250		1,290
Magothy Marina	82070614										275			275
White Rocks Yachting Center	82152801			275							265			540
Herrington Harbour Marina North	SID-021305	400		350			1,000		500			900	400	3,550
Herrington Harbour Marina South	SID-021306					800					400			1,200
Hidden Harbour Marina	SID-021304	500									450	220		1,170
<b>ANNE ARUNDEL CO TOTAL</b>		1,010	-	1,130	-	800	1,785	150	1,075	265	1,660	1,370	900	10,145
<b>BALTIMORE CITY</b>	<b>5</b>													-
Northwest Sanitation Yard	82030319			100	322	140		300		314	130		225	1,531
Eastern Sanitation Yard	82030320		200		173		246	120		280	601		250	1,870
Western Dist. Sanitation Yard	82030321					320		300						620
Quarantine Road Landfill	82030322				885									885
Northwest Transfer Station	82070618						450						390	840
<b>BALTIMORE CITY TOTAL</b>		-	200	100	1,380	460	696	720	-	594	731	-	865	5,746
<b>BALTIMORE COUNTY</b>	<b>7</b>													-
Eastern Sanitary Landfill	82006201	1,621	1,075	4,204	3,448	2,246	4,176	2,659	1,936	2,815	2,385	3,671	628	30,864
Western Acceptance Facility	82010001	435	450	655	1,430	680	960	850	1,440	760	900	305	1,115	9,980
BA Co. Resource Recovery Facility	82030317	1,009	1,486	3,229	2,171	1,595	2,713	1,926	2,806	1,941	1,949	2,003	1,419	24,247
7th Dist. Hwy. Shed, White Hall	82030318		346	149	554	196		416	127	213	261		327	2,589
Bowleys Quarters Marina	82070605	178					290				247			715
6th Dist. Hwy. Shed, Freeland	82070615	241	453	754	633	673	556	428	743	355	583	600	339	6,358
11th District Hwy Shed	82160401													-
<b>BALTIMORE CO TOTAL</b>		3,484	3,810	8,991	8,236	5,390	8,695	6,279	7,052	6,084	6,325	6,579	3,828	74,753

MARYLAND ENVIRONMENTAL SERVICE  
CY 2016  
Used Oil Collection Report

LOCATIONS	Jan	Feb	Mar	Apr	May	Jun	Jul	Aug	Sep	Oct	Nov	Dec	Total
<b>CALVERT</b> 7													
Mt. Hope Waste Compactor Site 78066809	660	590	1,295	960	1,230	765	1,355	750	1,070	1,230	1,160	540	11,605
Ball Rd Waste Compactor Site 78343406	125	350	550	600	620	460	450	250	620	640	550	530	5,745
Huntingtown Compactor Site 78343613	250	325	200	550	250	775		140	615	300	400	870	4,675
Appeal Solid Waste Mgmt Facility 78343614	615	310	470	480	540	625	370	360	800	700	700	240	6,210
Lusby Waste Compactor Site 78343701	300		300	460	730	400	385	240	60		480		3,355
Barstow Compactor Site (LF) 78344001	280	300	280	490	330	400	350	400	700	300	240	350	4,420
Plum Point Rd Compactor Site 78344303	240	230	540	180	1,010	260	450	135	665	720	680	360	5,470
<b>CALVERT CO TOTAL</b>	<b>2,470</b>	<b>2,105</b>	<b>3,635</b>	<b>3,720</b>	<b>4,710</b>	<b>3,685</b>	<b>3,360</b>	<b>2,275</b>	<b>4,530</b>	<b>3,890</b>	<b>4,210</b>	<b>2,890</b>	<b>41,480</b>
<b>CAROLINE</b> 4													
Melville Collection Site 72087403						400							400
Preston Collection Site 72213101					200						225		425
Holly Collection Site (Ridgely) 72213320	625	350	375	725	300	850	675	300	800	400	400	350	6,150
Old Denton Collection Site 72213324								950	375			600	1,925
<b>CAROLINE CO TOTAL</b>	<b>625</b>	<b>350</b>	<b>375</b>	<b>725</b>	<b>500</b>	<b>1,250</b>	<b>675</b>	<b>1,250</b>	<b>1,175</b>	<b>400</b>	<b>625</b>	<b>950</b>	<b>8,900</b>
<b>CARROLL</b> 7													
Town of Manchester 82006204	325	125	200	550	250	750	400	300	700	400	200	450	4,650
City of Westminster 82030310	625	150	800	650	500	350	750	600	650	650	550	800	7,075
Town of Sykesville 82030311	400	800	500	900	850	550	1,100	1,050	550	350	750	650	8,450
Town of Hampstead 82067012	275		550	350	200	650	450	400	250	300	500	350	4,275
City of Taneytown 82070610	200		500	300	350	500	200	250	300	200		500	3,300
Hoods Mill						200	100	200			150		650
Northern Landfill						1,950	2,450	2,100	2,400	1,800	2,220	2,000	14,920
<b>CARROLL CO TOTAL</b>	<b>1,825</b>	<b>1,075</b>	<b>2,550</b>	<b>2,750</b>	<b>2,150</b>	<b>4,950</b>	<b>5,450</b>	<b>4,900</b>	<b>4,850</b>	<b>3,700</b>	<b>4,370</b>	<b>4,750</b>	<b>43,320</b>
<b>CECIL</b> 6													
Cecil County Landfill 72072610	900	225	1,450	900	1,800	1,300	800	1,400	800	1,700	1,450	650	13,375
Stemmer's Run Transfer Station 72072611	400				400		375			400	200		1,775
Woodlawn Transfer Station 72118601		400	500	300	850	500	250	500	800	400	300	300	5,100
Town of Elkton 72213321	200		250	250	450	450	250	350	200	500	400	550	3,850
Locust Point Marina 72213322					250		100					150	500
Bohemia Vista Marina SID-021307							75				275	100	450
<b>CECIL CO TOTAL</b>	<b>1,500</b>	<b>625</b>	<b>2,200</b>	<b>1,450</b>	<b>3,750</b>	<b>2,250</b>	<b>1,850</b>	<b>2,250</b>	<b>1,800</b>	<b>3,000</b>	<b>2,625</b>	<b>1,750</b>	<b>25,050</b>
<b>DORCHESTER</b> 4													
Golden Hill T.S. 72212801	400					350					300		1,050
Secretary 72213201		255		275		250			250			250	1,280
Beulah Landfill 72213501						925					850		1,775
Cambridge DPW 72213601	150	250	250	400	275	525		450	250	275	275	250	3,350
<b>DORCHESTER CO TOTAL</b>	<b>550</b>	<b>505</b>	<b>250</b>	<b>675</b>	<b>275</b>	<b>2,050</b>	<b>-</b>	<b>450</b>	<b>500</b>	<b>275</b>	<b>1,425</b>	<b>500</b>	<b>7,455</b>

MARYLAND ENVIRONMENTAL SERVICE  
CY 2016  
Used Oil Collection Report

LOCATIONS	Jan	Feb	Mar	Apr	May	Jun	Jul	Aug	Sep	Oct	Nov	Dec	Total
<b>FREDERICK</b> 6													
Mt. Airy Maint Facility 82006206	725	1,000	1,100	1,150	1,250	1,000	950	1,250	1,100	1,000	950	1,050	12,525
Frederick County Recycling Center 82006601	1,325	1,750	2,350	2,350	2,800	2,600	2,500	2,150	2,850	1,850	2,300	1,900	26,725
Ingrahm Shell 82030313		125				100		150				150	525
Town of Thurmont 82030314	550	150	550	650	200	650	800	350	550	350	250	450	5,500
Brunswick Public Works Garage 82152501		325	250	300	150	350	300	200	600	400	200	550	3,625
Walkersville 82152701													-
<b>FREDERICK CO TOTAL</b>	<b>2,600</b>	<b>3,350</b>	<b>4,250</b>	<b>4,450</b>	<b>4,400</b>	<b>4,700</b>	<b>4,550</b>	<b>4,100</b>	<b>5,100</b>	<b>3,600</b>	<b>3,700</b>	<b>4,100</b>	<b>48,900</b>
<b>GARRETT</b> 6													
Weber's Solid Waste Collection Site 82152903													-
Rt. 135 Collection Site 82443001			300					500					800
Bumble Bee 84047015						550			450				1,000
Grantsville 84047119			350					600			600		1,550
Garrett Co. Landfill, Oakland 84047121			400			475		225			500		1,600
Kings Run Site SID-017563			500			400			325				1,225
<b>GARRETT CO TOTAL</b>	<b>-</b>	<b>-</b>	<b>1,550</b>	<b>-</b>	<b>-</b>	<b>1,425</b>	<b>-</b>	<b>1,325</b>	<b>775</b>	<b>-</b>	<b>1,100</b>	<b>-</b>	<b>6,175</b>
<b>HARFORD</b> 11													
City of Aberdeen, Public Works 82006207	291	550	179	128		263	181	413		278	638		2,921
City of Havre de Grace 82006208	172	371	163	199	131	161	125	122	131	151	192		1,918
Whiteford Hwy. Dist. Shop 82006214	237	336	671	761	644	568	450	636	243	879	810	133	6,398
Town of Bel Air 82070611	608	372	795	1,742	470	699	961	1,168	553	1,224	992	267	9,851
Scarboro Landfill 82070612	513	670	1,452	1,686	1,303	1,442	1,362	1,367	1,210	945	1,465	773	14,188
Norrisville Elem. School 82070613	218	131	179	389	350	403	374	237	579	170	437	262	3,729
Abingdon Hwy. Dist. Shop 82114001	274	397	428	679	463	437	310	610	590	398	775		5,361
Aldino Hwy. Dist. Shop, Churchville 82114003	378	677	619	554	491	619	475	656	462	375	953	440	6,699
Jarrettsville Highway Shop 82114004	944	1,090	1,492	1,301	1,561	1,965	1,408	1,059	1,752	794	1,636	670	15,672
Silverman WWTP 82160801	325										260		585
Joppatowne 82114010	260	181	631	130	162	258	669	63		237		229	2,820
<b>HARFORD CO TOTAL</b>	<b>4,220</b>	<b>4,775</b>	<b>6,609</b>	<b>7,569</b>	<b>5,575</b>	<b>6,815</b>	<b>6,345</b>	<b>6,331</b>	<b>5,520</b>	<b>5,451</b>	<b>8,158</b>	<b>2,774</b>	<b>70,142</b>
<b>KENT</b> 4													
Kent Co. Transfer Station, Galena 72087402			275					250					525
Sharptown Transfer Station 72213309				200				500			350		1,050
Haven Harbour Marina 72213310													-
Nicholson Transfer Station 72213801		550		650			750		450	675		550	3,625
<b>KENT CO TOTAL</b>	<b>-</b>	<b>550</b>	<b>275</b>	<b>850</b>	<b>-</b>	<b>-</b>	<b>750</b>	<b>750</b>	<b>450</b>	<b>675</b>	<b>350</b>	<b>550</b>	<b>5,200</b>

MARYLAND ENVIRONMENTAL SERVICE  
CY 2016  
Used Oil Collection Report

LOCATIONS	Jan	Feb	Mar	Apr	May	Jun	Jul	Aug	Sep	Oct	Nov	Dec	Total
<b>PRINCE GEORGE'S</b>													
8													
Town of Cheverly 78015901				250			250			300	425	250	1,475
Town of Riverdale Park 78021903	220			225			250	150		200		250	1,295
Ft. Washington Marina 78343606		480								250			730
City of New Carrollton 78343607		825			600	385	295	445			825		3,375
City of Hyattsville 78343801		500						500	300	250	200		1,750
City of Greenbelt 82030309	560		895	520	225	735	545	435	355	785	400		5,455
City of Laurel 82152301		500	340	1,010	390	775	710	650	440	700	195	1,040	6,750
Prince George's Co. MRF						250							250
<b>PRINCE GEORGE'S CO TOTAL</b>	<b>780</b>	<b>2,305</b>	<b>1,235</b>	<b>2,005</b>	<b>1,215</b>	<b>2,145</b>	<b>2,050</b>	<b>1,745</b>	<b>1,175</b>	<b>2,055</b>	<b>2,430</b>	<b>1,940</b>	<b>21,080</b>
<b>QUEEN ANNE'S</b>													
8													
Centreville Transfer Station 72213312		150	400		500	450		400	500	450		425	3,275
Q. A. County Public Landing 72213313	350		300	875	350	475	300	400	400	500	550	425	4,925
Church Hill Transfer Station 72213314	225		300		375		400		375			350	2,025
Grasonville Transfer Station 72213315		250		375	500		500		500		500		2,625
Glanding Transfer Station 72213316	525		400		400				500		300		2,125
Batts Neck Transfer Station 72213317	500	200		700			825	700			650		3,575
Q. A. County Bay Bridge Airport 72213318													-
Piney Narrows Yacht 72307702	250					200				250		250	950
<b>QUEEN ANNE'S CO TOTAL</b>	<b>1,850</b>	<b>600</b>	<b>1,400</b>	<b>1,950</b>	<b>2,125</b>	<b>1,950</b>	<b>1,200</b>	<b>1,500</b>	<b>2,275</b>	<b>1,200</b>	<b>2,000</b>	<b>1,450</b>	<b>19,500</b>
<b>SAINT MARY'S</b>													
7													
Oakville Transfer Station 78021905	500	450	540	650	500	705	505	275	425	610	1,000	550	6,710
St. Andrews Transfer Station 78066803	750	725	1,000	1,070	1,570	1,275	1,033	475	500	1,720	1,200	360	11,678
Charlotte Hall Transfer Station 78066804	640	750	1,250	1,050	1,320	1,550	1,150	675	1,075	600		550	10,610
Valley Lee Transfer Station 78066805	535	120	675	430	625	695	537		280	550	890	325	5,662
Ridge Transfer Station 78343403		350	460	500		625	250		350		300	350	3,185
Clement's Transfer Station 78344101	390	550	640	800	650	1,005	545	300	275	750	1,575	570	8,050
Maryland International Raceway SID-018994				400					900				1,300
<b>ST MARY'S CO TOTAL</b>	<b>2,815</b>	<b>2,945</b>	<b>4,565</b>	<b>4,900</b>	<b>4,665</b>	<b>5,855</b>	<b>4,020</b>	<b>1,725</b>	<b>3,455</b>	<b>4,580</b>	<b>4,965</b>	<b>2,705</b>	<b>47,195</b>
<b>SOMERSET</b>													
7													
Chance Transfer Station 72072605					250			225			200		675
Marion-Crisfield Transfer Station 72072606		200	170		200		350		300				1,220
Somers Cove Marina 72072607			300				400					200	900
Mt. Vernon Transfer Station 72072608		325			625	400		450			400	400	2,600
Dublin-Costen Transfer Station 72072609													-
Somerset County Landfill 72213001		150				200			250		250		850
City of Crisfield 72214301												250	250
<b>SOMERSET CO TOTAL</b>	<b>-</b>	<b>675</b>	<b>470</b>	<b>-</b>	<b>1,275</b>	<b>400</b>	<b>750</b>	<b>925</b>	<b>300</b>	<b>-</b>	<b>850</b>	<b>850</b>	<b>6,495</b>



MARYLAND ENVIRONMENTAL SERVICE  
CY 2016  
Used Oil Collection Report

LOCATIONS	Jan	Feb	Mar	Apr	May	Jun	Jul	Aug	Sep	Oct	Nov	Dec	Total
<b>TALBOT</b> 6													
Dogwood Harbour 72092801	275				150		200			250			875
Oak Creek 72163001			250	175	200	200	150	225	275	225	250	225	2,175
Midshore I Landfill 72213319	225		200	300		300	450	700		500		425	3,100
Bellevue 72232301					100			175		100			375
Trappe Landing 72395401			200	200			175		200				775
Neavitt 72232501				200			150			125			475
<b>TALBOT CO TOTAL</b>	<b>500</b>	<b>-</b>	<b>650</b>	<b>875</b>	<b>450</b>	<b>500</b>	<b>1,125</b>	<b>1,100</b>	<b>475</b>	<b>1,200</b>	<b>250</b>	<b>650</b>	<b>7,775</b>
<b>WASHINGTON</b> 6													
Kaetzel Transfer Station 82030308	300		250	150	250	200	350	150	200	150	150	150	2,300
Dargan Transfer Station 82031701	250			200		250			100			150	950
Greensburg Transfer Station 82152901	150		350	150	250	400	250	250	350	200	150		2,500
Forty West Landfill (Lund) 83037023	400	400	400	1,200	700	1,350	1,000	550	1,000	750	600	600	8,950
Hancock Landfill 83042310			500			300		200				300	1,300
Town of Boonsboro 82030307								500					500
<b>WASHINGTON CO TOTAL</b>	<b>1,100</b>	<b>400</b>	<b>1,500</b>	<b>1,700</b>	<b>1,200</b>	<b>2,500</b>	<b>1,600</b>	<b>1,650</b>	<b>1,650</b>	<b>1,100</b>	<b>900</b>	<b>1,200</b>	<b>16,500</b>
<b>WICOMICO</b> 12													
Allen Transfer Station (Fruitland) 72072601				275		200			150		225		850
Bivalve T.S. 72072602	250				250				250				750
Mardela T.S. 72120601				200					200				400
Wicomico Rec & Parks 72213301													-
Blackwater T.S. Delmar TS 72213302	250			200				275			175		900
Airport T.S. 72213304	175			250			250		250				925
New Land Park Landfill T.S. 72213305	750	720	400	1,050	1,225	1,300		975	975		1,250	1,575	10,220
Quantico T.S. 72213306	150				225							275	650
Wango T.S. 72213701	200				325				250		275		1,050
Hebron T.S. 72213702	200			200				275			200		875
Parsonsburg T.S. 72213703	250			265			125	275			200		1,115
Sharptown T.S. 72213704				100				150					250
<b>WICOMICO CO TOTAL</b>	<b>2,225</b>	<b>720</b>	<b>400</b>	<b>2,540</b>	<b>2,025</b>	<b>1,500</b>	<b>375</b>	<b>1,950</b>	<b>2,075</b>	<b>-</b>	<b>2,325</b>	<b>1,850</b>	<b>17,985</b>
<b>WORCHESTER</b> 5													
Central Landfill, Newark 72087401		475			200			125	170			400	1,370
Snow Hill Transfer Station 72213308		225			250	1,000		225	260	100			2,060
Berlin Transfer Station 72213705	180	325	400		550	425		475	600	475	375	400	4,205
Pocomoke Public Landfill 72213706		265			400			450		150		200	1,465
Worcester County DPW Maintenance SID-007451	250		175		150		150		250			150	1,125
<b>WORCHESTER CO TOTAL</b>	<b>430</b>	<b>1,290</b>	<b>575</b>	<b>-</b>	<b>1,550</b>	<b>1,425</b>	<b>150</b>	<b>1,275</b>	<b>1,280</b>	<b>725</b>	<b>375</b>	<b>1,150</b>	<b>10,225</b>
<b>STATE TOTAL</b>	<b>27,984</b>	<b>26,980</b>	<b>43,210</b>	<b>47,275</b>	<b>43,515</b>	<b>55,426</b>	<b>41,399</b>	<b>44,528</b>	<b>44,778</b>	<b>41,517</b>	<b>49,032</b>	<b>36,102</b>	<b>501,746</b>
<b>CY16 1QTR TOTAL</b>	<b>98,174</b>		<b>CY16 2QTR TOTAL</b>		<b>146,216</b>		<b>CY16 3QTR TOTAL</b>		<b>130,705</b>		<b>CY16 4QTR TOTAL</b>		<b>126,651</b>

**MARYLAND ENVIRONMENTAL SERVICE  
CY 2016  
Anti-Freeze Collection Report**

LOCATIONS	Jan	Feb	Mar	Apr	May	Jun	Jul	Aug	Sep	Oct	Nov	Dec	Total
<b>ALLEGANY</b>													-
Mountainview Landfill 82272901										175			175
Penn Mar Recycling Building 84006201				150									150
Allegany Co. Transfer Sta., Oldtown 84047017													-
Allegany Co., Flintstone Refuse Site 84047120													-
													-
													-
<b>ALLEGANY CO TOTAL</b>	-	-	-	150	-	-	-	-	-	175	-	-	325
<b>ANNE ARUNDEL</b>													
Mears Marina 78343611							25	55					80
Annapolis Landing Marina 78343612										300			300
Port Annapolis 78344201			80										80
Casa Rio Marina 78344302								100					100
Magothy Marina 82070614													-
White Rocks Yachting Center 82152801													-
Herrington Harbour Marina North SID-021305			190					340					-
Herrington Harbour Marina South SID-021306													-
Hidden Harbour Marina SID-021304													-
<b>ANNE ARUNDEL CO TOTAL</b>	-	-	270	-	-	-	25	495	-	300	-	-	560
<b>BALTIMORE CITY</b>													
Northwest Solid Waste Yard 82030319													-
Northeast Yard 82030320										298			298
Western Dist. Sanitation Yard 82030321													-
Quarantine Road Landfill 82030322													-
Northwest Transfer Station 82070618													-
<b>BALTIMORE CITY TOTAL</b>	-	-	-	-	-	-	-	-	-	298	-	-	298
<b>BALTIMORE COUNTY</b>													
Eastern Sanitary Landfill 82006201	291	196	375	335	221	396	336	259	436	301	395	369	3,910
Western Acceptance Facility 82010001													-
BA Co. Resource Recovery Facility 82030317	140	382		539	402	248	315	396	235		511	389	3,557
7th Dist. Hwy. Shed, White Hall 82030318													-
Bowleys Quarters Marina 82070605	66												66
6th Dist. Hwy. Shed, Freeland 82070615													-
11th District Hwy Shed 82160401													-
<b>BALTIMORE CO TOTAL</b>	497	578	375	874	623	644	651	655	671	301	906	758	7,533

MARYLAND ENVIRONMENTAL SERVICE  
CY 2016  
Anti-Freeze Collection Report

LOCATIONS	Jan	Feb	Mar	Apr	May	Jun	Jul	Aug	Sep	Oct	Nov	Dec	Total
<b>CALVERT</b>													
Mt. Hope Waste Compactor Site 78066809		25	120		70	100		40	50		130		535
Ball Rd Waste Compactor Site 78343406					125	30		85	20		20		280
Huntingtown Compactor Site 78343613		120	220		90	50		90	50		100		720
Appeal Solid Waste Mgmt Fac 78343614		25			50			50	20		65		210
Lusby Waste Compactor Site 78343701			25			50			30		20		125
Barstow Compactor Site (LF) 78344001			40		25			40	25		20		150
Plum Point Rd Compactor Site 78344303			50		20	25		30	20		25		170
<b>CALVERT CO TOTAL</b>	<b>-</b>	<b>170</b>	<b>455</b>	<b>-</b>	<b>380</b>	<b>255</b>	<b>-</b>	<b>335</b>	<b>215</b>	<b>-</b>	<b>380</b>	<b>-</b>	<b>2,190</b>
<b>CAROLINE</b>													
Melville Collect Site 72087403													-
Preston Collect Site 72213101													-
Holly Collect Site (Ridgely) 72213320	270				200								470
Old Denton Collect Site 72213324													-
<b>CAROLINE CO TOTAL</b>	<b>270</b>	<b>-</b>	<b>-</b>	<b>-</b>	<b>200</b>	<b>-</b>	<b>-</b>	<b>-</b>	<b>-</b>	<b>-</b>	<b>-</b>	<b>-</b>	<b>470</b>
<b>CARROLL</b>													
Town of Manchester 82006204													-
City of Westminster 82030310													-
Town of Sykesville 82030311													-
Town of Hampstead 82067012													-
City of Taneytown 82070610													-
<b>CARROLL CO TOTAL</b>	<b>-</b>	<b>-</b>	<b>-</b>	<b>-</b>	<b>-</b>	<b>-</b>	<b>-</b>	<b>-</b>	<b>-</b>	<b>-</b>	<b>-</b>	<b>-</b>	<b>-</b>
<b>CECIL</b>													
Cecil County Landfill 72072610			500									500	1,000
Stemmer's Run Transfer Station 72072611													-
Woodlawn Transfer Station 72118601													-
Town of Elkton 72213321													-
Locust Point Marina 72213322													-
Bohemia Vista Marina SID-021307													-
<b>CECIL CO TOTAL</b>	<b>-</b>	<b>-</b>	<b>500</b>	<b>-</b>	<b>-</b>	<b>-</b>	<b>-</b>	<b>-</b>	<b>-</b>	<b>-</b>	<b>-</b>	<b>500</b>	<b>1,000</b>

**MARYLAND ENVIRONMENTAL SERVICE**  
**CY 2016**  
**Anti-Freeze Collection Report**

LOCATIONS	Jan	Feb	Mar	Apr	May	Jun	Jul	Aug	Sep	Oct	Nov	Dec	Total
<b>DORCHESTER</b>													
Golden Hill T.S. 72212801													-
Secretary 72213201													-
Beulah Landfill 72213501													-
Cambridge DPW 72213601								175					175
<b>DORCHESTER CO TOTAL</b>	-	-	-	-	-	-	-	175	-	-	-	-	175
<b>FREDERICK</b>													
Mt. Airy Maint Facility 82006206													-
Reichs Ford Landfill 82006601				250									250
Ingrahm Shell 82030313													-
Town of Thurmont 82030314													-
Brunswick Public Works Garage 82152501													-
Walkersville 82152701													-
<b>FREDERICK CO TOTAL</b>	-	-	-	250	-	-	-	-	-	-	-	-	250
<b>GARRETT</b>													
Weber's Solid Waste Collection Site 82152903													-
Rt. 135 Collection Site 82443001													-
Bumble Bee 84047015													-
Grantsville 84047119											150		150
Garrett Co. Landfill, Oakland 84047121			150										150
Kings Run Site SID-017563			100										100
<b>GARRETT CO TOTAL</b>	-	-	250	-	-	-	-	-	-	-	150	-	400
<b>HARFORD</b>													
City of Aberdeen, Public Works 82006207							100			117			217
City of Havre de Grace 82006208							141						141
Whiteford Hwy. Dist. Shop 82006214		89		189	47			131			302		758
Town of Bel Air 82070611				261	87					268	268	235	1,119
Scarboro Landfill 82070612		146	268		212			128	181		135	240	1,310
Norrisville Elem. School 82070613													-
Abingdon Hwy. Dist. Shop 82114001		158		87		164	168			137	207		921
Aldino Hwy. Dist. Shop, Churchville 82114003				146					106		112		364
Jarrettsville Highway Shop 82114004		161		227	221	79		187		380	248		1,503
Silverman WWTP 82160801													-
Joppatowne 82114010			235							314			549
<b>HARFORD CO TOTAL</b>	-	554	503	910	567	243	409	446	287	1,216	1,272	475	6,882

**MARYLAND ENVIRONMENTAL SERVICE  
CY 2016  
Anti-Freeze Collection Report**

LOCATIONS	Jan	Feb	Mar	Apr	May	Jun	Jul	Aug	Sep	Oct	Nov	Dec	Total
<b>KENT</b>													
Kent Co. Transfer Station, Galena 72087402									100				100
Sharptown Transfer Station 72213309													-
Haven Harbour Marina 72213310													-
Nicholson Transfer Station 72213801									125				125
<b>KENT CO TOTAL</b>	-	-	-	-	-	-	-	-	225	-	-	-	225
<b>PRINCE GEORGE'S</b>													
Town of Cheverly 78015901													-
Town of Riverdale Park 78021903													-
Ft. Washington Marina 78343606													-
City of New Carrollton 78343607							55						55
City of Hyattsville 78343801										250			250
City of Greenbelt 82030309								100					100
City of Laurel 82152301		200					210					225	635
<b>PRINCE GEORGE'S CO TOTAL</b>	-	200	-	-	-	-	265	100	-	250	-	225	1,040
<b>QUEEN ANNE'S</b>													
Centreville Landfill 72213312					225								225
Q. A. County Public Landing 72213313													-
Church Hill Transfer Station 72213314													-
Grasonville Transfer Station 72213315													-
Glanding Transfer Station 72213316													-
Batts Neck Transfer Station 72213317													-
Q. A. County Bay Bridge Airport 72213318													-
Piney Narrows Yacht 72307702	100												100
<b>QUEEN ANNE'S CO TOTAL</b>	100	-	-	-	225	-	-	-	-	-	-	-	325

**MARYLAND ENVIRONMENTAL SERVICE  
CY 2016  
Anti-Freeze Collection Report**

LOCATIONS	Jan	Feb	Mar	Apr	May	Jun	Jul	Aug	Sep	Oct	Nov	Dec	Total
<b>SAINT MARY'S</b>													
Oakville Transfer Station 78021905			50		35			40		40			165
St. Andrews Transfer Station 78066803		25	125		80		150	100	100	30	90		700
Charlotte Hall Transfer Station 78066804		55	70		130		50	110	50		200		665
Valley Lee Transfer Station 78066805		55	70				75		50				250
Ridge Transfer Station 78343403			85						80				165
Clement's Transfer Station 78344101			110				25		50				185
Maryland International Raceway SID-018994									140				140
<b>ST MARY'S CO TOTAL</b>	<b>-</b>	<b>135</b>	<b>510</b>	<b>-</b>	<b>245</b>	<b>-</b>	<b>300</b>	<b>250</b>	<b>470</b>	<b>70</b>	<b>290</b>	<b>-</b>	<b>2,270</b>
<b>SOMERSET</b>													
Chance Transfer Station 72072605													-
Marion-Crisfield Transfer Station 72072606							150						150
Somers Cove Marina 72072607							100						100
Mt. Vernon Transfer Station 72072608													-
Dublin-Costen Transfer Station 72072609													-
Somerset County Landfill 72213001													-
City of Crisfield 72214301													-
<b>SOMERSET CO TOTAL</b>	<b>-</b>	<b>-</b>	<b>-</b>	<b>-</b>	<b>-</b>	<b>-</b>	<b>250</b>	<b>-</b>	<b>-</b>	<b>-</b>	<b>-</b>	<b>-</b>	<b>250</b>
<b>TALBOT</b>													
Dogwood Harbour 72092801													-
Midshore I Landfill 72213319	275									250			525
<b>TALBOT CO TOTAL</b>	<b>275</b>	<b>-</b>	<b>-</b>	<b>-</b>	<b>-</b>	<b>-</b>	<b>-</b>	<b>-</b>	<b>-</b>	<b>250</b>	<b>-</b>	<b>-</b>	<b>525</b>
<b>WASHINGTON</b>													
Kaetzel Transfer Station 82030308				50							50		100
Dargan Transfer Station 82031701				50		50							100
Greensburg Transfer Station 82152901	50			50		50					100		250
Forty West Landfill (Lund) 83037023		150			150	100		150			200		750
Hancock Landfill 83042310			100										100
Town of Boonsboro 82030307													-
<b>WASHINGTON CO TOTAL</b>	<b>50</b>	<b>150</b>	<b>100</b>	<b>150</b>	<b>150</b>	<b>200</b>	<b>-</b>	<b>150</b>	<b>-</b>	<b>-</b>	<b>350</b>	<b>-</b>	<b>1,300</b>

MARYLAND ENVIRONMENTAL SERVICE  
CY 2016  
Anti-Freeze Collection Report

LOCATIONS	Jan	Feb	Mar	Apr	May	Jun	Jul	Aug	Sep	Oct	Nov	Dec	Total
<b>WICOMICO</b>													
Allen Transfer Station 72072601									50				50
Bivalve T.S. 72072602													-
Mardela T.S. 72120601									50				50
Wicomico Rec & Parks 72213301													-
Blackwater T.S. Delmar TS 72213302													-
Airport T.S. 72213304													-
New Land Park T.S. 72213305	300			150			600		400			320	1,770
Quantico T.S. 72213306													-
Wango T.S. 72213701									50				50
Hebron T.S. 72213702													-
Parsonsborg T.S. 72213703													-
Sharptown T.S. 72213704													-
<b>WICOMICO CO TOTAL</b>	<b>300</b>	<b>-</b>	<b>-</b>	<b>150</b>	<b>-</b>	<b>-</b>	<b>600</b>	<b>-</b>	<b>550</b>	<b>-</b>	<b>-</b>	<b>320</b>	<b>1,920</b>
<b>WORCHESTER</b>													
Central Landfill, Newark 72087401		200											200
Snow Hill Transfer Station 72213308													-
Berlin Transfer Station 72213705													-
Pocomoke Public Landfill 72213706													-
<b>WORCHESTER CO TOTAL</b>	<b>-</b>	<b>200</b>	<b>-</b>	<b>-</b>	<b>-</b>	<b>-</b>	<b>-</b>	<b>-</b>	<b>-</b>	<b>-</b>	<b>-</b>	<b>-</b>	<b>200</b>
<b>STATE TOTAL</b>	<b>1,492</b>	<b>1,987</b>	<b>2,963</b>	<b>2,484</b>	<b>2,390</b>	<b>1,342</b>	<b>2,500</b>	<b>2,606</b>	<b>2,418</b>	<b>2,860</b>	<b>3,348</b>	<b>2,278</b>	<b>28,138</b>
	<b>CY16 1QTR TOTAL</b>	<b>6,442</b>	<b>CY16 2QTR TOTAL</b>	<b>6,216</b>	<b>CY16 3QTR TOTAL</b>	<b>7,524</b>	<b>CY16 4QTR TOTAL</b>	<b>8,486</b>					