



Maryland State Reforestation Law Program

Annual Report

July 1, 2002 - June 30, 2003

Submitted by:

C. Ronald Franks

Secretary, Maryland Department of Natural Resources

Robert L. Flanagan

Secretary, Maryland Department of Transportation

Submitted to:

Senate Education, Health & Environmental Affairs Committee

The Honorable Paula C. Hollinger, Chair

House Environmental Matters Committee

The Honorable Maggie L. McIntosh, Chair

Introduction	3
Construction Activities Subject to the Reforestation Law	3
Amount and Location of Acres Cleared, Conserved, and Planted.....	3
Amount of Reforestation Fees Collected and Expended	4
Grant Program	4
Appendices	5
Reforestation Information	5
Figure 1 – Location and Amount of Acres Cleared by County.....	5
Table 1 - Location and Amount of Projects and Acres Cleared by County	5
Figure 2 – Location and Amount of Acres Cleared by Watershed	6
Table 2 – Location and Amount of Projects and Acres Cleared by Watershed	6
Figure 3 - Location and Amount of Acres Planted by County.....	7
Table 3 - Location and Amount of Acres Planted by County	7
Figure 4 - Amount and Location of Acres Planted by Watershed	8
Table 4 - Amount and Location of Acres Planted by Watershed.....	8
Grants Information.....	9
Figure 5 - Grant Funds Awarded by County	9
Table 5 - Grant Funds Awarded by County.....	9
Figure 6 - Grant Funds Awarded by Watershed.....	10
Table 6 - Grant Funds Awarded by Watershed	10

Introduction

Natural Resources Article § 5-103 (The Reforestation Law) requires that on or before July 1 of each year, the department or local authority shall submit to the Senate Economic and Environmental Affairs Committee and the House Environmental Matters Committee a report on:

- (1) The number and location of each construction activity subject to the requirements of the Reforestation Law;
- (2) The amount and location of acres cleared, conserved, and planted in connection with the activity; and
- (3) The amount of reforestation fees collected and expended (1991, ch. 255, § 2.) *§5224*

Construction Activities Subject to the Reforestation Law

There were 10 projects subject to the Reforestation Law for FY 2003. Please see Table 1 and Figure 1 for a listing and a graphic of those projects by county. Please see Table 2 and Figure 2 for a listing and a graphic of those projects by watershed.

Amount and Location of Acres Cleared, Conserved, and Planted

Please see Table 1 and Figure 1 for a listing and a graphic of the amount and location of acres cleared under the Reforestation Law in FY 2003 by county. Please see Table 2 and Figure 2 for a listing and a graphic of the amount and location of acres cleared under the Reforestation Law in FY 2003 by watershed. Please see Table 3 and Figure 3 for a listing and a graphic of the amount and location of acres conserved and planted in FY2003 by county. Please see Table 4 and Figure 4 for a listing and a graphic of the amount and location of acres conserved and planted in FY2003 by watershed. In fiscal year 2003, a total of 11.92 acres were planted.

Totals are as follows:

- Acres cleared: 86.8
- Acres conserved: 0
- Acres planted: 11.92
- Net acres of forest (planting – impacts): -74.88

The maps shown under the Figures section show where across the State, and in what amounts, impacts occurred; where planting occurred, and in what amount; and the net acres of forest for fiscal year 2003.

Amount of Reforestation Fees Collected and Expended

Fees collected: \$8,015.00

Fees expended: \$66,166.00

Grant Program

Any funds in excess of the mitigation obligation for a county or watershed are used to fund a grant program for local governments. In FY 2003, \$72,886.00 was granted to local communities via Reforestation Law fee-in-lieu funds. Please see Table 5 and Figure 5 for a listing and a graphic of the amount and location of grant funds awarded by county. Please see Table 6 and Figure 6 for a listing and a graphic of the amount and location of grant funds awarded by watershed.

Appendices

Reforestation Information

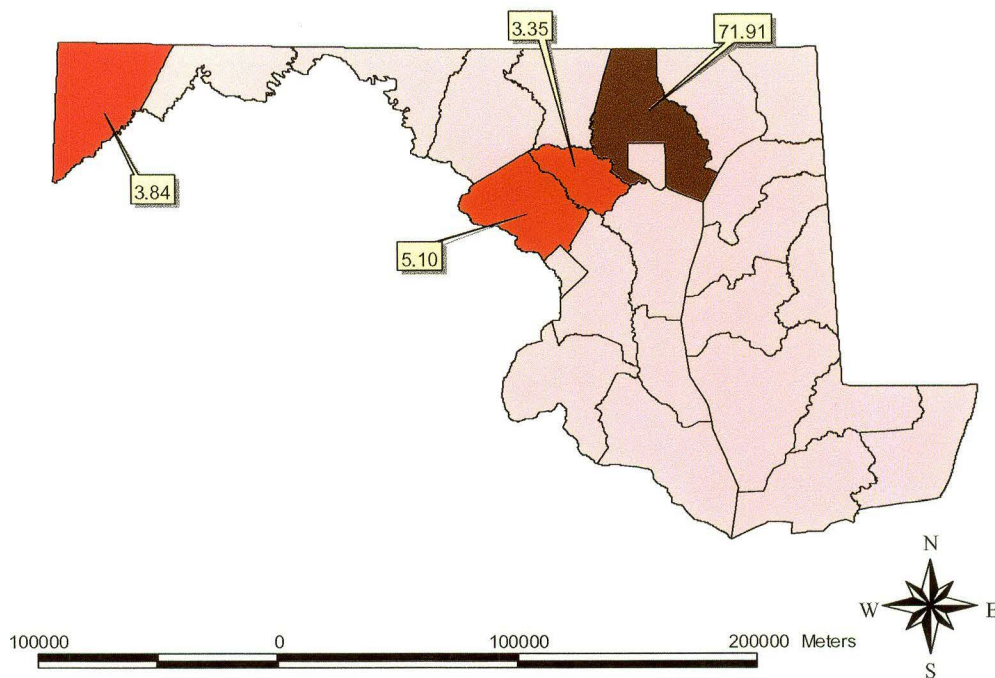


Figure 1 – Location and Amount of Acres Cleared by County

PDMS	County	Watershed	Route	AdDate	Completion	Ac. Cleared
022247	ANNE ARUNDEL	02-13-09	MD 100	08/20/2002	11/15/2003	1.6
031282	BALTIMORE	02-13-08	I-695	04/08/2003	07/21/2005	2.8
032119	BALTIMORE	02-13-08	MD 43	12/17/2002	07/15/2005	67.31
031232	BALTIMORE	02-13-09	I-695	04/29/2003	10/01/2004	1.8
114052	GARRETT	02-14-05	MD 495	09/10/2002	?	0.84
114056	GARRETT	05-02-02	MD 42	12/24/2002	?	3
134156	HOWARD	02-13-09	I-70	06/24/2003	?	1.45
134160	HOWARD	02-13-11	I-95	11/12/2002	?	1.9
152048	MONTGOMERY	02-13-11	US 29	04/01/2003	07/14/2005	5.1
214107	WASHINGTON	02-14-05	I-70	11/05/2002	10/01/2004	1
					total =	86.8

Table 1 - Location and Amount of Projects and Acres Cleared by County

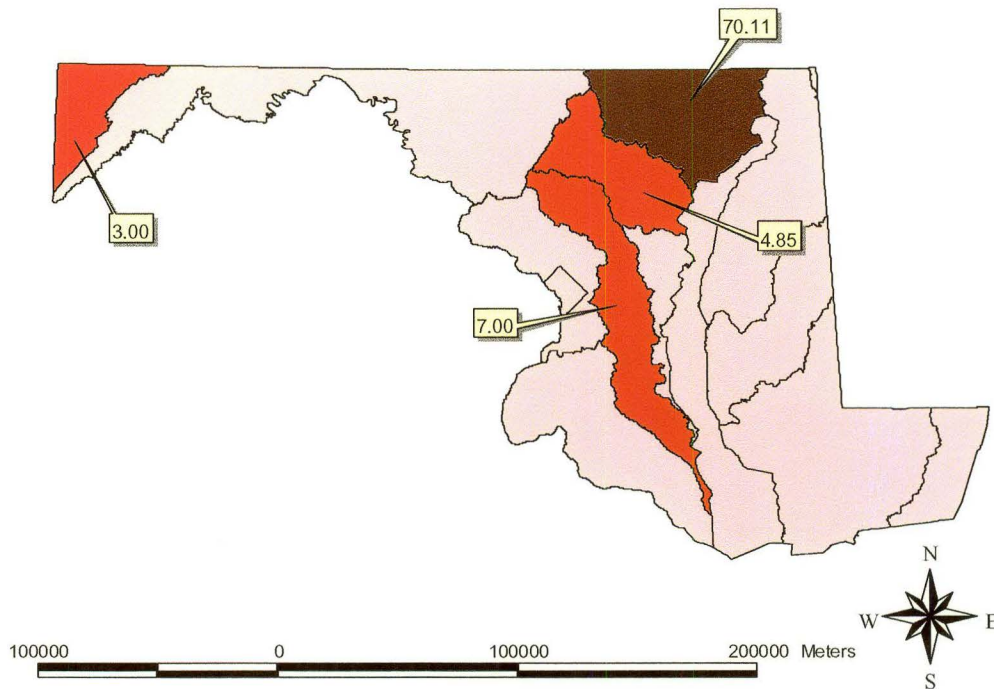


Figure 2 – Location and Amount of Acres Cleared by Watershed

PDMS	County	Watershed	Route	AdDate	Completion	Ac. Cleared
031282	BALTIMORE	02-13-08	I-695	04/08/2003	07/21/2005	2.8
032119	BALTIMORE	02-13-08	MD 43	12/17/2002	07/15/2005	67.31
022247	ANNE ARUNDEL	02-13-09	MD 100	08/20/2002	11/15/2003	1.6
031232	BALTIMORE	02-13-09	I-695	04/29/2003	10/01/2004	1.8
134156	HOWARD	02-13-09	I-70	06/24/2003	?	1.45
134160	HOWARD	02-13-11	I-95	11/12/2002	?	1.9
152048	MONTGOMERY	02-13-11	US 29	04/01/2003	07/14/2005	5.1
114052	GARRETT	02-14-05	MD 495	09/10/2002	?	0.84
214107	WASHINGTON	02-14-05	I-70	11/05/2002	10/01/2004	1
114056	GARRETT	05-02-02	MD 42	12/24/2002	?	3
					total =	86.8

Table 2 – Location and Amount of Projects and Acres Cleared by Watershed

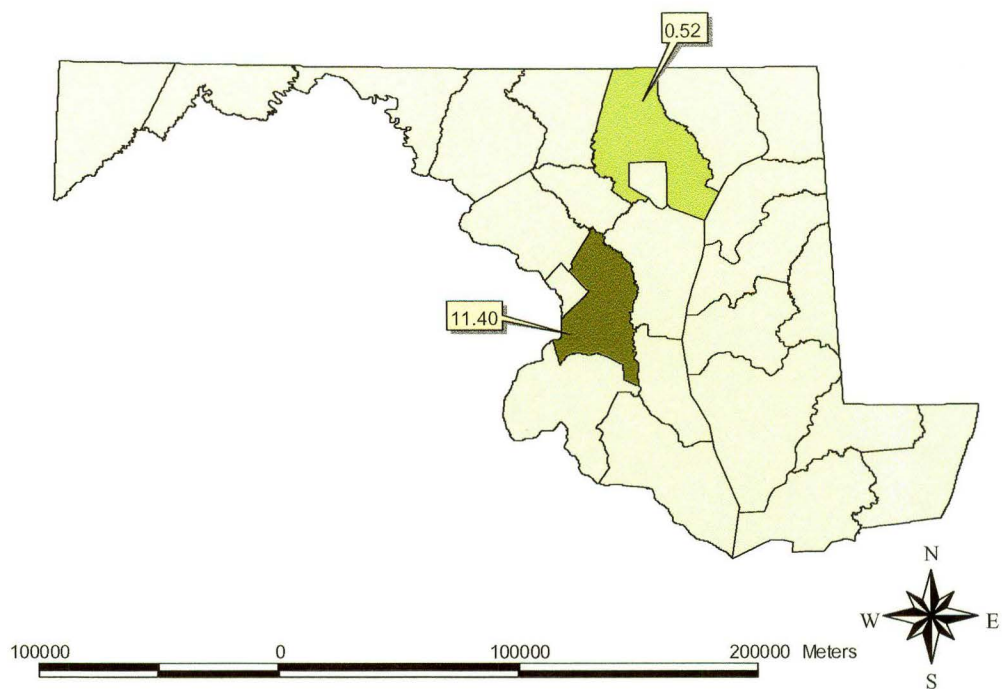


Figure 3 - Location and Amount of Acres Planted by County

CONTRACT #	County	ACRES	PLANT. RT/LOC	TOTAL TREES	PLANTING DATE
BA1935172	BALTIMORE	0.52	I-695	55	12/15/2002
PG8745172	PRINCE GEORGES	0.37	I-495	135	12/15/2002
PG8745172	PRINCE GEORGES	0.62	I-495	229	12/15/2002
PG8745172	PRINCE GEORGES	1.5	I-495	472	12/15/2002
PG8745172	PRINCE GEORGES	1.28	I-495	340	12/15/2002
PG8745172	PRINCE GEORGES	0.39	I-495	126	12/15/2002
PG8745172	PRINCE GEORGES	1.59	I-495	941	12/15/2002
PG8745172	PRINCE GEORGES	4.37	I-495	1872	12/15/2002
PG8745172	PRINCE GEORGES	0.26	I-495	98	12/15/2002
PG8745172	PRINCE GEORGES	0.6	I-495	219	12/15/2002
PG8745172	PRINCE GEORGES	0.42	I-495 @ Ritchie Marl. Rd	154	12/15/2002

TOTAL 11.92 4641

Table 3 - Location and Amount of Acres Planted by County

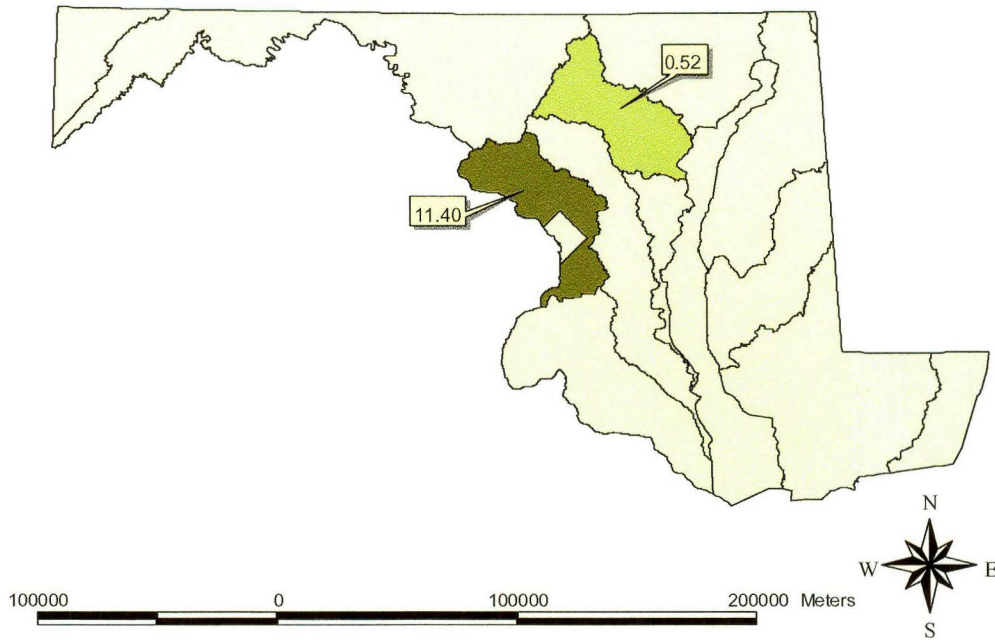


Figure 4 - Amount and Location of Acres Planted by Watershed

CONTRACT #	County	WATERSHED	ACRES	PLANT. RT\LOC	TOTAL TREES	PLANTING DATE
BA1935172	BALTIMORE	02-13-09	0.52	I-695	55	12/15/2002
PG8745172	PRINCE GEORGES	02-14-02	0.37	I-495	135	12/15/2002
PG8745172	PRINCE GEORGES	02-14-02	0.62	I-495	229	12/15/2002
PG8745172	PRINCE GEORGES	02-14-02	1.5	I-495	472	12/15/2002
PG8745172	PRINCE GEORGES	02-14-02	1.28	I-495	340	12/15/2002
PG8745172	PRINCE GEORGES	02-14-02	0.39	I-495	126	12/15/2002
PG8745172	PRINCE GEORGES	02-14-02	1.59	I-495	941	12/15/2002
PG8745172	PRINCE GEORGES	02-14-02	4.37	I-495	1872	12/15/2002
PG8745172	PRINCE GEORGES	02-14-02	0.26	I-495	98	12/15/2002
PG8745172	PRINCE GEORGES	02-14-02	0.6	I-495	219	12/15/2002
PG8745172	PRINCE GEORGES	02-14-02	0.42	I-495 @ Ritchie Marl. Rd	154	12/15/2002
TOTAL			total =	11.92	4641	

Table 4 - Amount and Location of Acres Planted by Watershed

Grants Information

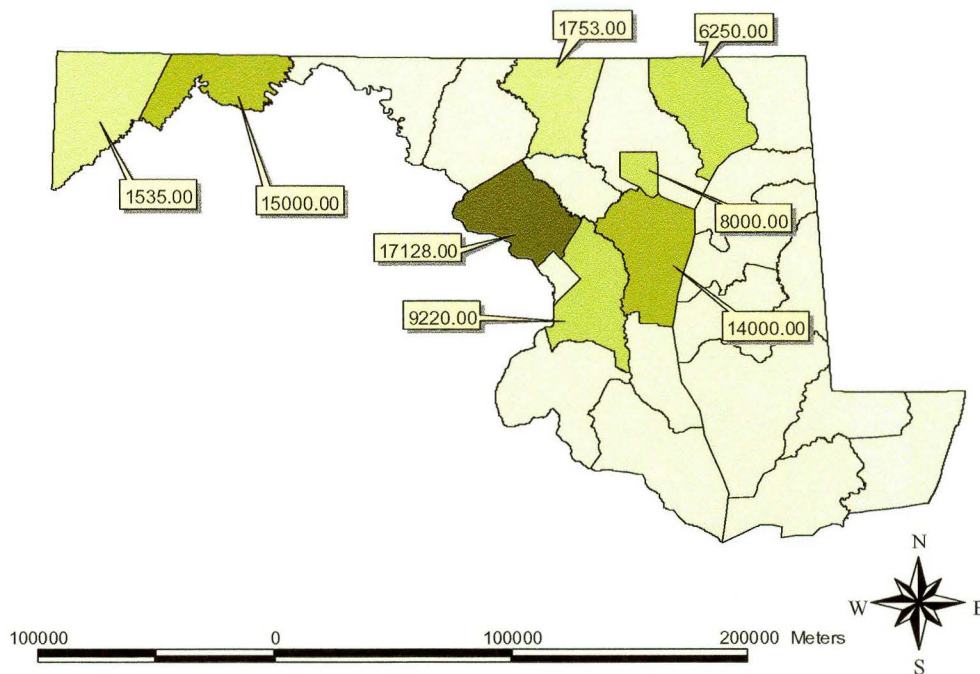


Figure 5 - Grant Funds Awarded by County

Organization name	Grant Request	Amount (#)	City	Watershed Name	County
Community Association	\$8,000.00		Arnold	Lower Western Shore	AA
MD PTA	\$6,000.00 shrubs		Glen Burnie	Patapsco/Back	AA
City of Cumberland	\$8,000.00 70 Street Trees		Cumberland	Upper Potomac	Allegany
City of Cumberland	\$7,000.00 70 st. trees		Cumberland	Upper Potomac	Allegany
WPNPC	\$8,000.00 trees		Baltimore	Patapsco/Back	Balt City
Town of Manchester	\$1,753.00 shrubs, 500		Manchester	Upper Potomac	Carroll
School	\$1,535.00 2 trees		Oakland	Youghiogheny	Garrett
Community Assoc.	\$3,750.00 50 st. trees		Bel Air	Upper Western Shore	Harford
Harford County	\$2,500.00 trees		Bel Air	Upper Western Shore	Harford
Chevy Chase	\$2,418.00 13 trees		Chevy Chase	Middle Potomac	Mont
Neighborhood Assoc.	\$5,000.00 50 st. trees		Chevy Chase	Middle Potomac	Mont
Town of Kensington	\$9,710.00 23 st and trees		Kensington	Middle Potomac	Mont
New Carrollton	\$6,720.00 112 st trees		New Carrollton	Middle Potomac	PG
City of Seat Pleasant	\$2,500.00 8 trees		Seat Pleasant	Middle Potomac	PG

\$72,886.00

Table 5 - Grant Funds Awarded by County

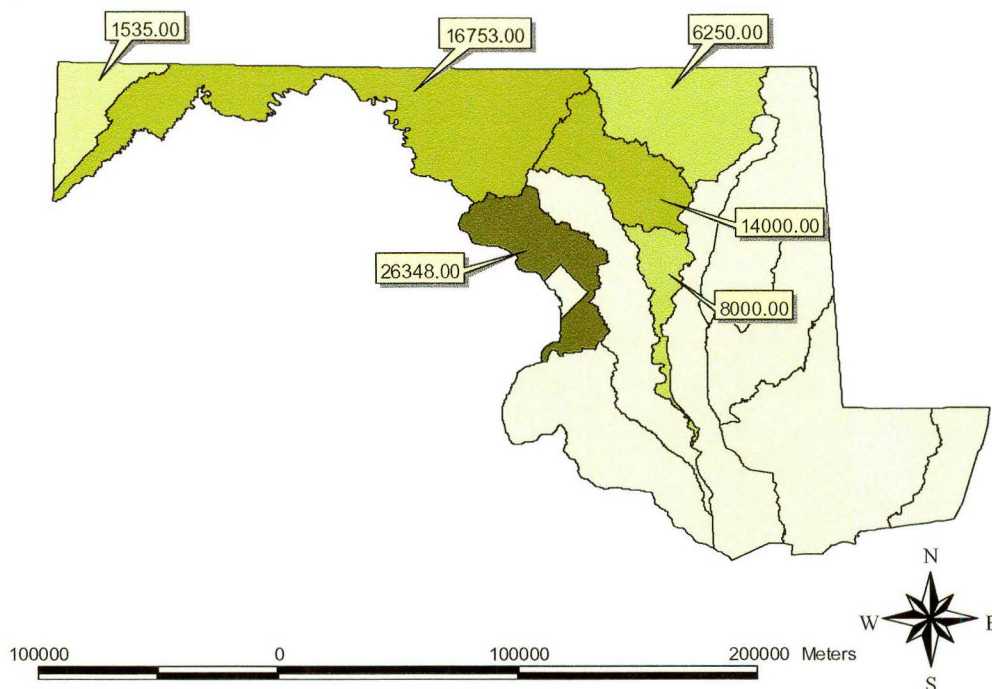


Figure 6 - Grant Funds Awarded by Watershed

Organization name	Grant Request	Amount (#)	City	Watershed Name	County
Community Association	\$8,000.00		Arnold	Lower Western Shore	AA
Chevy Chase	\$2,418.00	13 trees	Chevy Chase	Middle Potomac	Mont
Neighborhood Assoc.	\$5,000.00	50 st. trees	Chevy Chase	Middle Potomac	Mont
Town of Kensington	\$9,710.00	23 st and trees	Kensington	Middle Potomac	Mont
New Carrollton	\$6,720.00	112 st trees	New Carrollton	Middle Potomac	PG
City of Seat Pleasant	\$2,500.00	8 trees	Seat Pleasant	Middle Potomac	PG
MD PTA	\$6,000.00	shrubs	Glen Burnie	Patapsco/Back	AA
WPNPC	\$8,000.00	trees	Baltimore	Patapsco/Back	Balt City
City of Cumberland	\$8,000.00	70 Street Trees	Cumberland	Upper Potomac	Allegany
City of Cumberland	\$7,000.00	70 st. trees	Cumberland	Upper Potomac	Allegany
Town of Manchester	\$1,753.00	shrubs, 500	Manchester	Upper Potomac	Carroll
Community Assoc.	\$3,750.00	50 st. trees	Bel Air	Upper Western Shore	Harford
Harford County	\$2,500.00	trees	Bel Air	Upper Western Shore	Harford
School	\$1,535.00	2 trees	Oakland	Youghiogheny	Garrett

\$72,886.00

Table 6 - Grant Funds Awarded by Watershed