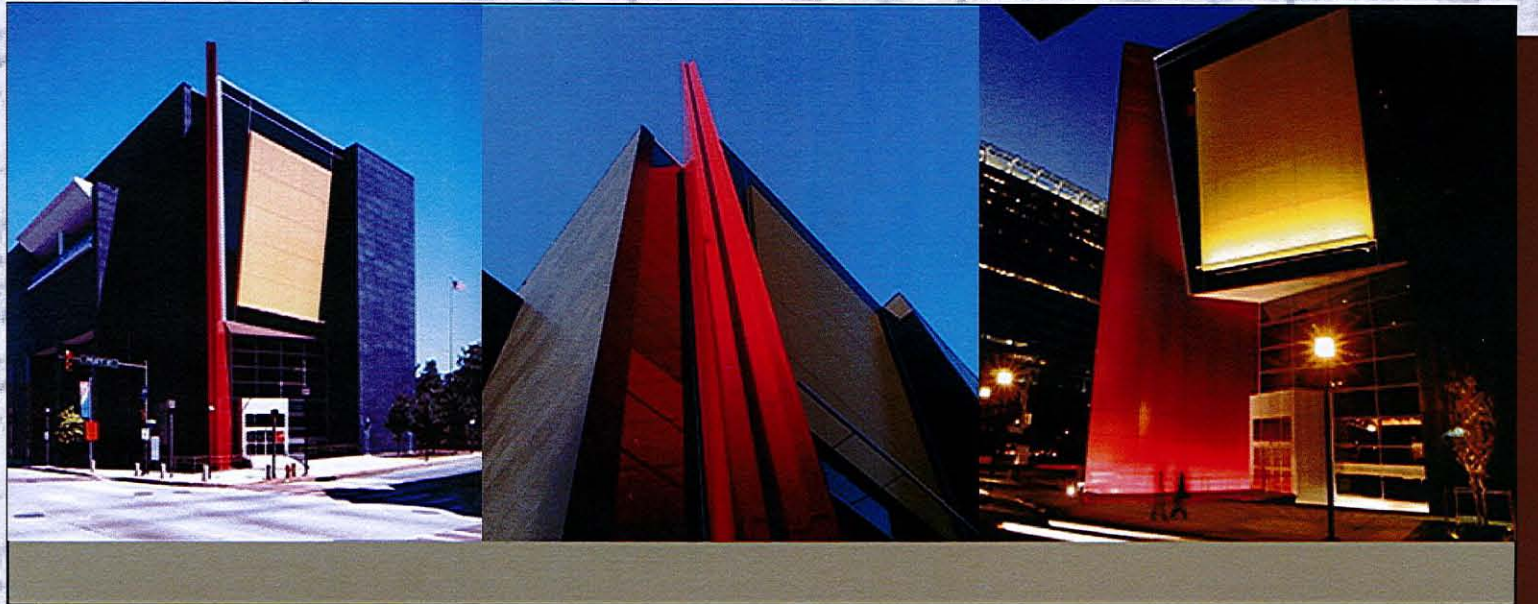




2012 ANNUAL REPORT



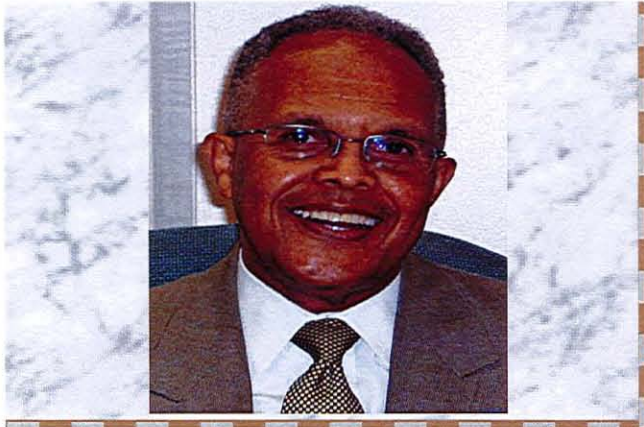
**THE REGINALD F. LEWIS MUSEUM
OF MARYLAND AFRICAN AMERICAN HISTORY AND CULTURE**

*"We are **One**, our cause is **One**, and we must **help each other**;
if we are to **succeed**."*

~Frederick Douglass, 1881

Table of Contents

- **Letter From A. Skipp Sanders, Executive Director**
- **About The Museum**
- **Collections & Exhibitions**
- **Public Programs**
- **Education**
- **Volunteer and Visitor Services**
- **Resource Center**
- **Statements of Financial Position**
- **Benefactors**
- **Community Support**
- **Board of Directors**
- **Museum Staff**



From Executive Director A. Skipp Sanders

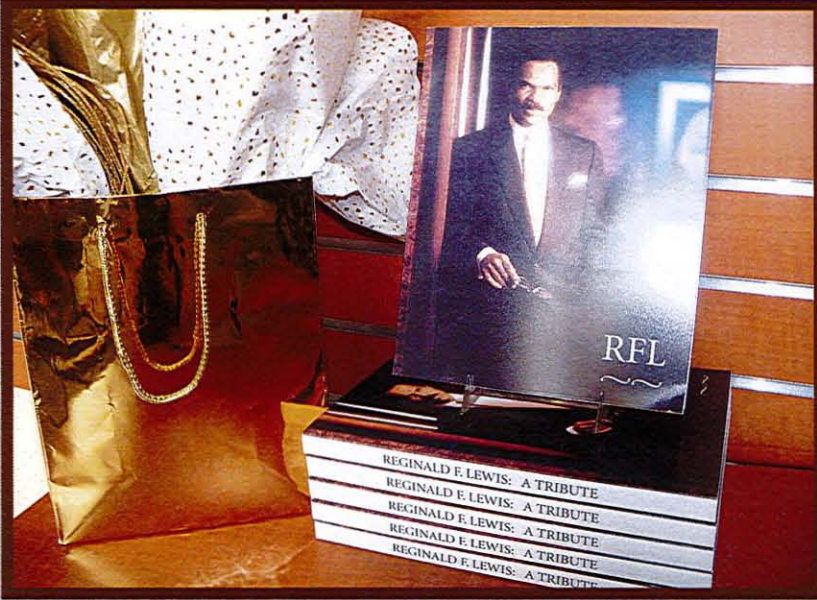
Dear Friends:

One of the many lessons for all of us from the legacy of African American History is a clearer understanding of the meaning of hope, an often misunderstood term. To hope is not to indulge in wishful thinking. That kind of behavior never could have helped see Harriet Tubman through to achieve her own freedom and subsequently to risk that same freedom frequently to liberate others. Nor was it wishful thinking that led Reginald F. Lewis to cut a path through formidable challenges to the highest level of entrepreneurial success. Theirs was a realistic hope, characterized by the ancestral wisdom that even the most challenging times “don’t last always,” and by Reginald Lewis’ knowledge that the way to meet challenges is to “Keep going, no matter what” in other words, to persevere.

Along with so many segments of our society, our museum family had a few challenges to face in fiscal year 2012. We found ourselves remaining among the more than 70% of arts, historical, and cultural institutions still fiscally challenged by the protracted economic downturn, a fact we took no comfort in. We also experienced some changes in the composition of our staff. However, our realistic hope was buoyed by the realization that we had what was necessary to sustain this magnificent institution and the great historic and cultural legacy it holds until we were forging forward once more. We had a compelling mission, and we had an outstanding, talented staff to fulfill it. We had strong leadership present on our Board of Directors and steadfast support from the State and in particular the Governor. Thankfully, we had the abiding support of many members, friends, and donors like you.

Our sponsors remained committed to us even when their own resources waned. As you will read, the continuing quality of the museum’s exhibitions, programs, and events drew praise from history buffs and visitors from across the state and well beyond the Mid-Atlantic region. Thanks to your continued financial and moral support, the museum is poised to move forward once more. Realistic hope has prepared the way for real resurgence.

About The Museum



Mission

To be the premier experience and best resource for information and inspiration about the lives of African American Marylanders. The Museum seeks to realize its mission by collecting, preserving, interpreting, documenting, and exhibiting the rich contributions of African American Marylanders from the state's earliest history to the present and the future.

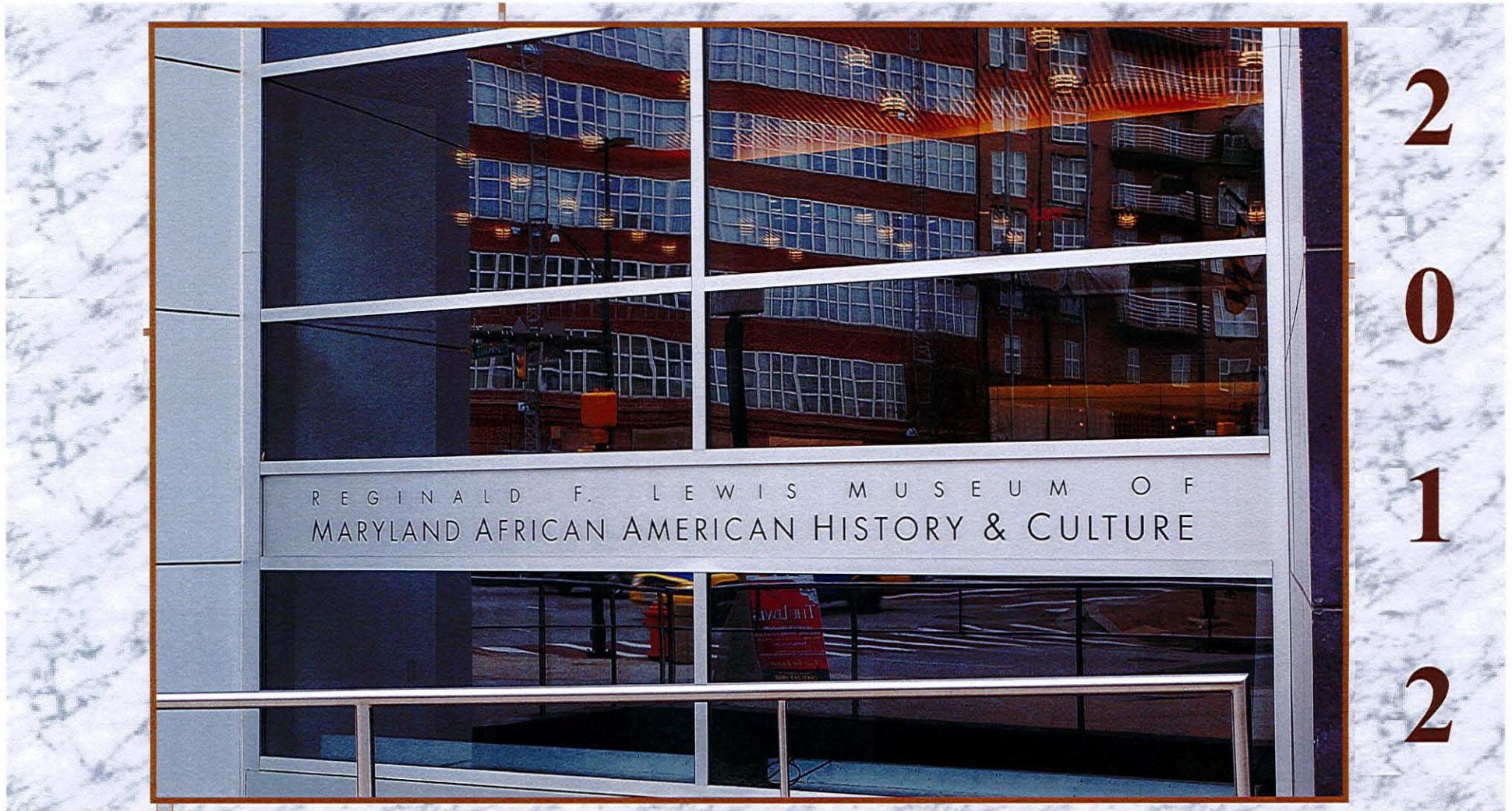
The Maryland African American Museum Corporation operates The Reginald F. Lewis Museum of Maryland African American History & Culture, which officially opened on June 25, 2005. The Corporation was created by the Maryland General Assembly in 1998 to plan, develop and manage a museum that emphasizes and highlights Maryland's rich African American history. Before it opened, by unanimous decision by the State Board of Public Works and museum leadership, the new museum was renamed after Reginald F. Lewis, a worthy native Marylander. The Reginald F. Lewis Foundation made a generous \$5,000,000 gift to the new museum in support of its educational activities.

Vision

To share globally, and with integrity, the human drama of Maryland's African American experience.

Values

- We stand for integrity and truthfulness
- Our foremost concentration is education
- We demonstrate social responsibility and ethical behavior in our activities
- We approach all of our activities and partners with a sense of pride and respect
- We emphasize the importance of family and community
- Our behavior mirrors our commitment to inclusiveness and involvement



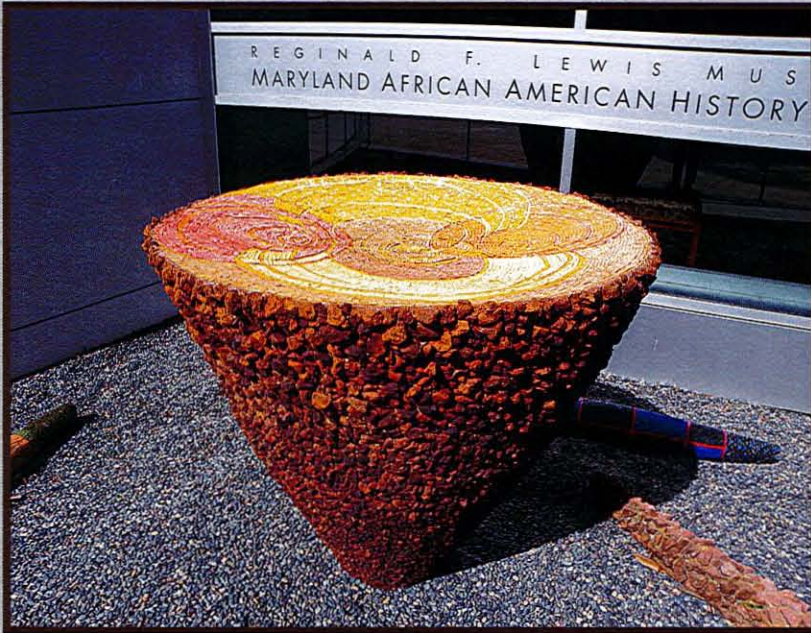
Website Redesign Project

In FY12, the museum staff continued working with website design firm, Mediatrope, to create a new, interactive website to better serve visitor needs and expectations. The website redesign project is funded by the Institute of Museum and Library Services (IMLS) grant awarded to the museum in 2010.

The new website will engage, educate, and inform, while building and reinforcing the museum's brand identity, and fostering awareness and interest in the organization, and the services it provides.

The targeted launch date of the new website, RFLewisMuseum.org, is scheduled to launch fall, 2012.

Collections and Exhibitions



Highlights of objects acquired during FY 2012 include *Vortex*, a large, volcanic stone and glass tiled sculpture by Martha Jackson Jarvis. *Vortex* was initially installed outside of the museum entrance as part of the 2011 exhibition, *Material Girls: Contemporary Black Women Artists*. The artist later donated the work to the museum as a permanent tribute to the exhibition.

The museum acquires items that help fulfill the mission of “collecting and preserving” materials related to Maryland’s African American history and culture. Department staff contacts potential donors, responds to collections inquiries, and schedules visits to view and assess potential acquisitions. The museum’s Collections Committee meets quarterly to review items for acquisition. In fiscal year 2012, the museum enhanced its holdings with donations to existing initiatives such as the McMillan Collection of African Art and Artifacts as well as with new acquisitions in visual art and material culture.

To date, the collection comprises almost 5000 items. The museum continues to receive donations of documents and ephemeral materials related to Maryland state and local cultural history, including event programs, DVDs, photographs, and periodicals, which can be used to supplement the stories told in its permanent exhibition galleries.

Collections and Exhibitions (cont.)

MATERIAL GIRLS

Contemporary Black Women Artists

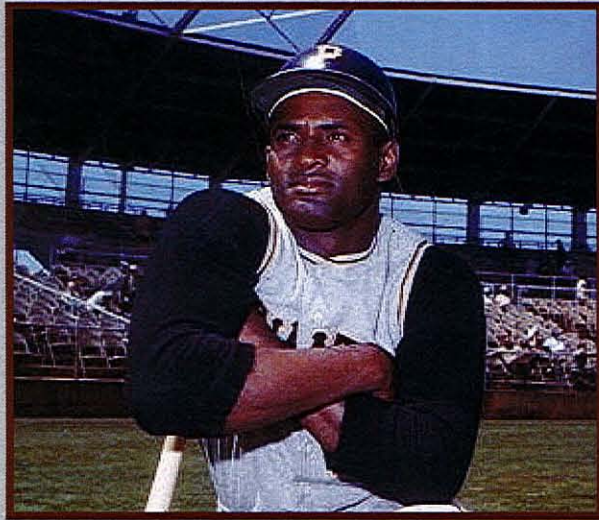
In FY 2012, the museum opened a total of 10 new exhibitions, and completed the run of its major special exhibition *Material Girls: Contemporary Black Women Artists* (February 12, 2011 – October 16, 2011), which was named “Best Exhibition 2011” by *Baltimore* magazine.



Collections and Exhibitions (cont.)



In the fall of 2011, the museum hosted two concurrent exhibitions from the Smithsonian Institution Traveling Exhibitions Service (SITES). The exhibitions *IndiVisible: African-Native American Lives in the Americas* and *Beyond Baseball: The Life of Roberto Clemente* provided opportunities to partner with both Latino American and Native American communities in Maryland. Exhibition related programming involved working with the Baltimore American Indian Center and Education Based Latino Outreach.



The museum also created media partnerships for cross-cultural, bilingual marketing through *Latin Opinion* newspaper. The museum applied for and received a small SITES Community Grant to host “Clemente in Context/Clemente en Contexto,” a roundtable discussion about Afro-Latino identity and experience featuring nationally-recognized panelists, in conjunction with *Beyond Baseball: The Life of Roberto Clemente*.

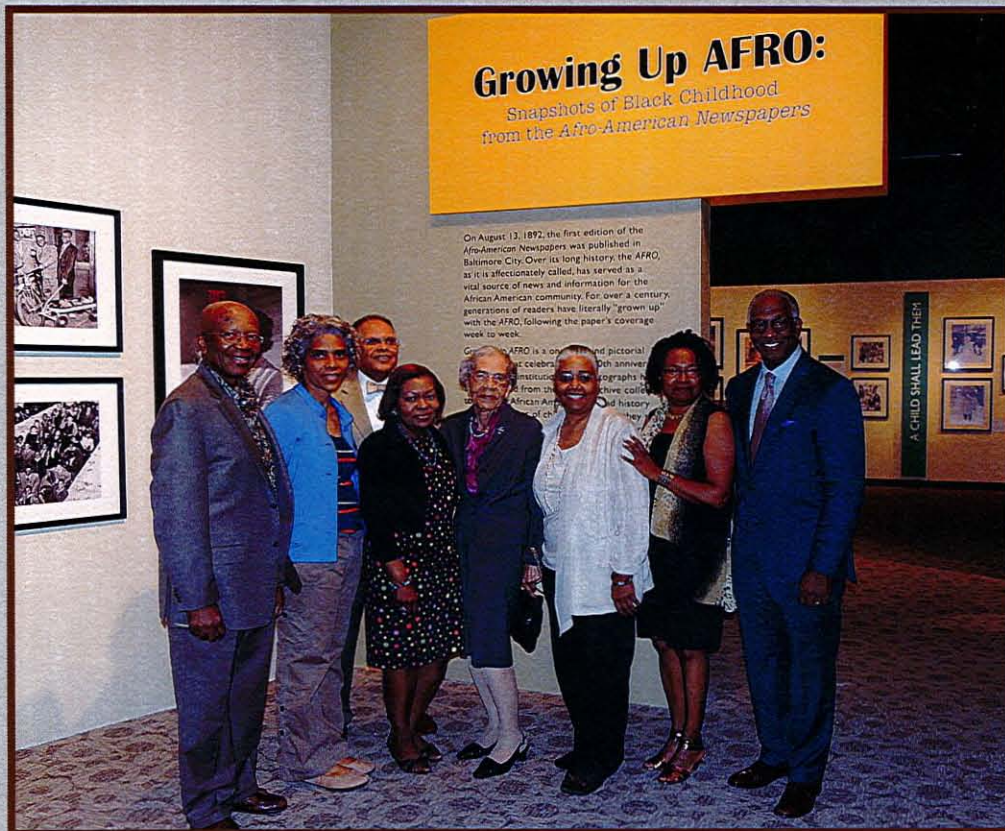
Collections and Exhibitions (cont.)



In the spring of 2012, the museum again presented two concurrent exhibitions. *Global Dandy: Selected Photographs from The Global Africa Project* was organized by museum staff as a companion to the feature exhibition *Dandy Lion: Articulating a Re(de)defined Black Masculine Identity*, guest curated by Shantrelle P. Lewis. Both exhibitions received substantial media attention and were well attended, attracting a slightly younger demographic to our institution.

Exciting public programs from dandy-inspired monologues performed by Theatre Morgan students to a “Style and Swag” men’s fashion bazaar brought the exhibition theme alive for audiences.

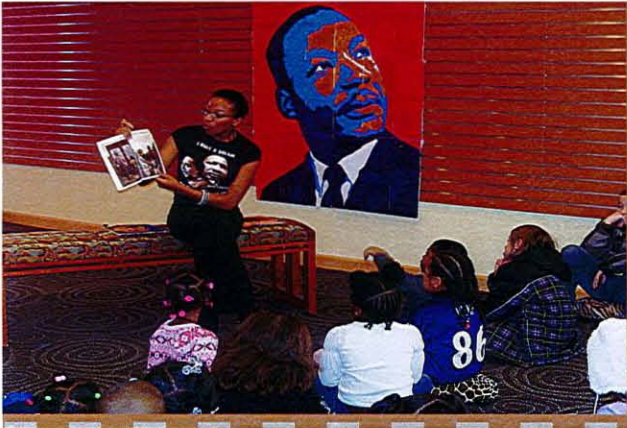
Collections and Exhibitions *(cont.)*



Just prior to the end of FY 2012, the museum opened *Growing Up AFRO: Snapshots of Black Childhood from the Afro-American Newspapers*. Curated by AFRO staff, in coordination with museum staff, the exhibition featured 120 photographs in honor of the newspapers 120th anniversary.

An active changing exhibition program continued in the museum's Arts Wall area, where the museum opened the following four shows during FY 2012: *Leah Taylor: Lift Him Up*; *4th Annual Reginald F. Lewis Museum High School Juried Art Show*; *Selections from the Permanent Collection*; and *Among Poets: Maryland's Poet Laureate Lucille Clifton*.

In FY 2012, the exhibition department also continued traveling the previously created Maryland Community Space banner exhibits to local schools and other institutions where the exhibits may be on view for a day or a couple of months. Our two goals with the traveling exhibition program are to: (1) increase the visibility for the museum and its products and services to educational and community organizations, peer institutions, and the general public, and (2) to generate revenue from the modest loan fees, which support the administrative and marketing needs of the program.



EDUCATION

Public Programs

In support of the goals of providing history and cultural programming throughout the year, the museum developed a schedule of Public Programming providing access for children, families and adults. Much of the museum's public programs focused on multicultural diversity (Afro-Latino and African-Native American) and black male identity due to the special exhibitions on display (*Beyond Baseball: The Life of Roberto Clemente*; *IndiVisible: African Native American Lives in the America* and *Dandy Lion: Articulating a Re(de)defined Black Masculine Identity*.) Programs featured scholars, lecturers and artists (visual and performing arts) introducing audiences of all ages to an array of presentations, lectures, and workshops that enhanced their learning experience with African American history and culture in Maryland and in the African Diaspora.

In FY2012, the museum produced over 80 public programming events. Highlights include The Master Beads Art workshop with *Material Girls* artist Joyce Scott, Artist Talk with Iké Udé, a children's puppet program series with Schroeder Cherry & His Puppets, Native American dance and storytelling presentations, Kwanzaa Family Fun Days, panel discussion on Afro-Latino identity, an author talk with New York Times best selling author Connie Briscoe; a Dress for Success Male Fashion Show and Workshop for black males, Dr. Martin Luther King Jr. Day Celebration, Radio One Minority Business Exchange, and a Juneteenth Jubilee Children's Party.

Throughout the year, the museum offers a range of programming series such as First Friday's Music Series; Saturday's Child Series; Generation Series; Genealogy Series; Lines Connect Book Club; Sundays@ 2 Films; Floetic Fridays; and 3rd Thursdays. With these series, the museum reaches out to a multitude of visitors on a variety of topics that are inclusive of the mission, exhibitions, and the curriculum which seeks to be both entertaining and educational.



Curriculum Development and Initiatives

Through curricular and educational programming, the museum provides important services that enhance in-class instruction. As a vital resource to the education community, and integrated with Maryland's standards-based education reform, the education component offers:

- Lessons developed by the Maryland State Department of Education (*An African American Journey*), and instructional support through workshops and resources materials to strengthen grades 4-12 curriculum.
- Professional development for teachers and resource personnel to increase their capacity to incorporate Maryland African American history, culture, and arts to effectively teach and motivate students.
- Program calendar offerings for students and educators to include: gallery tours, teacher resources, exhibition-driven programs, "Freedom Hour" (pre-school); "Journey's in History Theater", "Living History to Go" and the Annual High School Juried Art Show.

EDUCATION

Curriculum Development and Initiatives (cont.)

4th Annual High School Juried Art Show

The 4th Annual High School Juried Art Show focused on the theme of *Building Community through Civic Engagement* and featured high school artists from Harford County, Montgomery County, Baltimore County, Carroll County, Frederick Country and Prince George's County.

Over 47 pieces were submitted from which 20 were selected through a juried process by art educators and museum staff. Top honorees were: first-place winner-James Diggs III from Suitland High School in Prince Georges County; second place winner- Trevon Wright from Suitland High School in Prince Georges County; and third place winner- Amanda Barnes from Suitland High School in Prince Georges County.

The High School Juried Art Show was co-sponsored by the Maryland State Education Association.





EDUCATION

Curriculum Development and Initiatives (cont.)

The Education Department continues to offer recertification credits to Maryland educators, utilizing curriculum lessons and strategies for teaching African American history in the classroom. The courses offered in FY2012 included:

- *African American Colonial and Antebellum America* included content lectures by David Armenti, Research Archivist of the Maryland State Archives; Dr. Clara Smalls of Salisbury State University; and Dr. Dianne Swann-Wright, a historian on antebellum slavery in the Upper South. A field trip component to the Eastern Shore to view historic sites connected to Harriet Tubman and the Underground Railroad were coordinated by the Harriet Tubman Center in Cambridge, MD. Thirty-eight teachers attended the three day workshop.
- *Early 20th Century African American History* included lesson demonstrations by educators: Dr. Kaye Whitehead of Loyola University; Donna Olszewski from the Maryland State Department of Education; and Dr. JudyLynn Mitchell from Wicomico County Schools. Guest educators discussed Common Core State Standards with teachers and how they connect with the museum's curriculum lessons. Twenty-four teachers attended the three day workshop.



EDUCATION

Curriculum Development and Initiatives (cont.)

In FY2012, working with the MSDE liaison, Rose Wiggins, the museum continued to focus on the development and piloting of the high school curriculum of *African American Journeys*. Completed high school lessons were posted on the MSDE with a web link to the RFLM website. Ms. Wiggins continued to provide online webinars to pilot teachers utilizing the high school curriculum. The Education Task Force met in November 2011 and April 2012 to discuss strategies for implementing the new curriculum and the development of outreach programs for the ES/MS curriculum.

Regarding other FY 2012 activity, the education department mailed 2,590 school program guides. In addition to the mailings, the museum provided the school program guides to the MSEA meeting in Ocean City, the Association of Independent Maryland Schools (AIMS), the Maryland Council for Social Studies Fall Conference and at professional development workshops for educators.

Curriculum lessons continue to be distributed at educational fairs and professional development meetings. To provide educators' wider access to An African American Journey lessons, the museum has been working to post lessons electronically on the museum's website. The museum has developed The African American Journey Outreach that involves a history trunk program connecting with the curriculum lessons. Students will investigate slavery in Maryland by examining objects used on the Underground Railroad by Harriet Tubman, a runaway's bag, and artifacts related to daily life for an enslaved person. A museum teacher will visit schools to present activities. School groups can schedule the Paths to Freedom theme tour to accompany the outreach program. Additionally, through a museum internship project, the Frederick Douglass Resource Guide for grades 4-8 was developed. The educational guide gives an overview of Douglass's life in Maryland through articles and educational activities



EDUCATION

School Programs

In FY2012, the museum's education department provided *Living History to Go*, a school outreach program for grades K-12 that offers living history performances on Maryland African Americans displayed in the museum's permanent exhibition. The program includes an interactive 45 minute performance with a costumed history performer and curriculum lesson plans from *An African American Journey* to provide historical context with the characters. Program offerings include Harriet Tubman, Cab Calloway, Earl White and Juanita Jackson. The school outreach program has been booked by schools, afterschool programs and PTA family events in Baltimore City, Montgomery, Anne Arundel and Prince Georges Counties.

The museum extended its Joint Museum Tour offerings to include school tours with the Jewish Museum of Maryland. School groups can learn about the rich, cultural heritage and contributions of African American and Jewish communities in Maryland with the Building America Tour for grades 3-12.

The museum participated in the 2nd annual PreK @Play Day with Baltimore City Schools where preschoolers receive a free cultural enrichment experience at a museum or cultural center at this citywide event. The museum serviced 165 preschoolers and chaperones from several elementary schools for this annual event.

The museum continues to offer theme tours that align with state curriculum standards and complement lessons from *An African American Journey: A Resource for Learning the History of African Americans in Maryland and the United States*. These tours offerings are Paths to Freedom, The Fight for Justice, Heritage, Pioneers and Trailblazers and Building Our Community. During this fiscal year, 5,629 students were serviced with the museum's educational tours.



EDUCATION

Volunteers and Docents

The Volunteer and Scholars Program is dedicated to serving the community by providing multi-faceted support through meaningful interactions using historical information and material culture of African Americans in Maryland. Visitor Services personnel oversee internship programs, volunteer opportunities, docent training and the broader visitor experience. In FY2012, the museum benefited from a strong core of 40 dedicated volunteers and student workers who love to assist and care deeply about the museum. Volunteer training and materials were developed for the temporary exhibitions: Beyond Baseball; IndiVisible and Dandy Lion. Volunteers participated in almost every aspect of the museum as hosts for events, representing the museum at fairs, conferences and outside events. Dedicated volunteers work in the Resource Center three days per week and one works 4 days per week in the exhibition department along with several that assist with an informal speaker's bureau program visiting local senior centers. Volunteers have accounted for 2,221 hours of time. Museum volunteer leadership assist with the Volunteer Council and have taken it upon themselves to attend extended classes throughout the state, develop their own newsletter and participate in the recruiting and training of new volunteers.

VOLUNTEERS

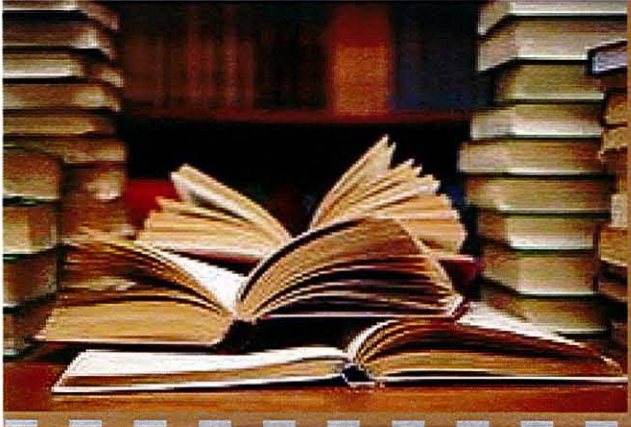
Kim Anderson
Jacqueline Arrinell
Fay Ashby
Alice Downs
James Henry
Suzanne Jewell
Teresa Jones
Vivian Lakes
Naomi Little

Kathryn McCaskill
Barbara Morgan
Barbara Roberts
Linda Sparks
Jackie Stewart
Theresa Thomas
Damaris Tucker
Pamela Wells
Saleem Wooden

DOCENTS

Nancy Barrick
Charleen Breckenridge
Cynthia Campbell
Bonnie Kutch
Sherry Lee
Cassandra Moore
Mary Parker

Ella Pope
Elizabeth Ramsey
Sandra Snead
Iris Taylor
Irma Thompson
Rae Welchel
Arlene Wilder



EDUCATION

The Resource Center

The 2011-2012 calendar year was marked by the receipt of the largest collection to the Resource Center consisting of an African American History collection from the Josephite Fathers of Baltimore City. This collection features a number of Maryland history titles as well as rare books from the 19th and early 20th century. We also welcomed an African American Art History collection from Dr. Lowery Sims of New York City.

Presentations about the museum, local history, and African American genealogy were given to various groups across the state including the Maryland Genealogy Society, The St. Mary's County Public Library (Leonardtwn), The Friends Group of the Randallstown Public Library, The Baltimore Chapter of AAHGS, and the Morgan State University Museum Studies Program.

In addition to outside lectures, a very active Public Programs schedule was coordinated by the Resource Center including the quarterly series in Genealogy and three weekday Lunch & Learn lectures.

Finally, the Resource Center now hosts the panel exhibit "Stories of Flight from Maryland in Black and White" which is on loan from the Maryland State Archives.

Statements of Financial Position
June 30, 2012 and 2011

RFLM 2012 REPORT

ASSETS	<u>2012</u>	<u>2011</u>
Current assets		
Cash and cash equivalents	\$ 767,508	\$ 350,878
Pledges receivable	34,916	17,500
Other receivables	43,266	49,502
Due from unrestricted fund	800,000	800,000
Museum Shop inventory	9,278	10,457
Deposits	1,500	-
Prepaid expenses	11,626	1,077
Total current assets	<u>1,668,094</u>	<u>1,229,414</u>
Property and Equipment, net	1,728,424	1,959,290
Non Current Assets		
Pledges receivable, net of current portion and unamortized discount of \$2,584 and \$5,266 for 2012 and 2011, respectively.	-	19,734
Investments	4,469,193	4,415,878
Restricted cash	2,273,273	2,261,427
Total non current assets	<u>6,742,466</u>	<u>6,697,039</u>
Total Assets	<u>\$ 10,138,984</u>	<u>\$ 9,885,743</u>

LIABILITIES AND NET ASSETS

Current Liabilities		
Accounts payable	\$ 288,823	\$ 314,322
Accrued payroll expenses	116,109	158,546
Accrued expenses	31,909	38,491
Due to BDJ Ventures	-	12,528
Line of credit	750,000	750,000
Deferred revenue	21,764	69,762
Due to endowment fund	800,000	800,000
Total current liabilities	<u>2,008,605</u>	<u>2,143,649</u>
Net Assets		
Unrestricted net assets	(199,742)	(213,514)
Temporarily restricted	175,346	285,763
Permanently restricted	8,154,775	7,669,845
Total net assets	<u>8,130,379</u>	<u>7,742,094</u>
Total Liabilities and Net Assets	<u>\$ 10,138,984</u>	<u>\$ 9,885,743</u>

**Statement of Revenue, Expenses, and Changes in Net Assets
Year Ended June 30, 2012**

RFLM 2012 REPORT

	2012			Total
	Unrestricted	Temporarily Restricted	Permanently Restricted	
Revenue and Support				
Grants	\$ 2,500,423	\$ -	\$ -	2,500,423
Contributions	217,376	25,000	484,930	727,306
Admissions	142,424	-	-	142,424
Membership dues	61,110	-	-	61,110
Rental Income	130,439	-	-	130,439
Investment Income	3,889	58,120	-	62,009
Realized gains on endowments	-	104,715	-	104,715
Unrealized losses on endowments	-	(98,252)	-	(98,252)
Other income	34,950	-	-	34,950
Net assets released from restrictions	200,000	(200,000)	-	-
Total revenue and support	3,290,611	(110,417)	484,930	3,665,124
Expenses				
Collections and exhibitions	613,530	-	-	613,530
Education and public programs	440,331	-	-	440,331
External affairs	351,046	-	-	351,046
Management, building and security	1,871,932	-	-	1,871,932
Total expenses	3,276,839	-	-	3,276,839
Increase (decrease) in net assets	13,772	(110,417)	484,930	388,285
Net assets/(deficit) beginning of year	(213,514)	285,763	7,669,845	7,742,094
Net assets/(deficit) End of Year	(199,742)	175,346	8,154,775	8,130,379

BENEFACTORS

The museum board and staff are grateful for the generous support of individuals, corporations, and foundations who advance the mission of the museum through their philanthropy. While we appreciate all who give, the benefactors who have given \$100 or more during FY2012 are listed in this publication. We make every effort to ensure that donors are properly recognized, so if we have inadvertently omitted your name from the list below or if your name is misspelled, please contact us.

FOUNDATION SUPPORT

Baltimore Community Foundation
Eddie and Sylvia Brown Family Foundation
Lord Baltimore Capital Foundation
Miles & Stockbridge Foundation
Parks and People, The Foundation
Philip & Harriet Klein Foundation, Inc
Profit Charitable Foundation
T Rowe Price Associates Foundation
The Reginald F. Lewis Foundation
The Wallace Foundation



BENEFACTORS

GOVERNMENTAL, CORPORATE AND ORGANIZATIONAL GIFTS

1st Baptist Church of Highland Park
AARP
Abrams, Foster, Nole & Williams
Alpha Kappa Alpha - Delta Pi Omega
Alpha Kappa Alpha - Rho Xi Omega
Alpha Kappa Alpha - Upsilon Epsilon Omega
Alpha Kappa Alpha - Upsilon Tau Omega Chapter
Associated Black Charities
Baltimore County Commission on Arts and Sciences
Baltimore Healthy Start, Inc.
Baltimore Hispanic Chamber of Commerce, Inc.
Baltimore Museum of Art
Baltimore Office of Promotion and the Arts
Burs & Garrett Physical Therapy, P.A.
CareFirst Blue Cross Blue Shield
Constantine Grimaldis Fine Arts, Ltd
Constellation Energy Group
Coppin State University
Daly Computers, Inc.
Delta Sigma Theta - Baltimore Metro Alumnae Chapter
East Baltimore Community Corporation
First Baptist Church of Highland Park
Friends of the Randallstown Library
FutureCare Health
GBHA
Historic Jonestown Inc.
Horton Mechanical Contractors, Inc.
Int'l Council of Community Churches
IWIF

J. F. Fischer, Inc.
Johns Hopkins Health System
Johns Hopkins University
Legg Mason
Marcorp, LTD/March Funeral Homes
Maryland State Arts Council
Mechanical Contractors Association of Maryland, Inc.
Morgan Stanley
Morgan State University
Morgan State University Fine Arts
Morgan State University-Dept. of History
MSU Dept of History
Mt Lebanon Baptist Church
Municipal Employees Credit Union of Baltimore, Inc.
New York Life
Pfizer, Inc.
PMS Parking
PNC Bank
Providence Baptist Church
Saul Ewing LLP
State of Maryland
T. Rowe Price Association
The Associated (Kramon & Graham Fund)
The Associated: Jewish Community Federation of Baltimore
The Harbor Bank of Maryland
UBS
University Of Maryland Medical System
University of Maryland School of Medicine
Verizon Maryland, Inc.
Virginia State University
Watkins Security Agency, Inc.
Whiting-Turner Contracting Co

BENEFACTORS

INDIVIDUAL SUPPORT

Dr. and Mrs. Nelson Adamson
Ms. Debbie M. Allen
Dr. Jerome Alston
Ms. CJ Arrindell
Dr. Diedre L. Badejo
Mr. James O. Baldwin, Sr. and
Ms. Sarah J. Albritton
Ms. Ruth Banks-Crowder
Mr. and Mrs. Ernest H. Barnes
Mr. and Mrs. Marc A. Batchelor
Mr. and Mrs. Michael Batipps
Mr. Michael Benjamin
Ms. Barbara Baden Bentley
Ms. Juliette Bethea
Ms. Sharon Blake
Mr. Gary Boardley
C. Edith Booker, Ph.D.
Ms. Sandra Brock Jibrell
Mr. Dunbar Brooks
Eddie C. and C. Sylvia Brown
Ms. Mary C. Bunting
Ms. Deborah W. Callard
Ms. Regina Carson
Mr. William M. Carson, Sr.
Ms. Tracey Chunn
Mr. and Mrs. Lester Coles
Ms. Beverly A. Cooper
Mr. and Mrs. Jack Cunningham
Mr. Nelson L. Davis, Sr.
Ms. Beverly Davis-Alston
Mr. and Mrs. Wallace Dennis
Mr. Rodell Dorsey
Rodney & Sharon Duncan

Mr. and Mrs. Antoine Elias
Ms. Sonja Foggie
James Ford
Dr. and Mrs. Bowyer G. Freeman
Mr. Anthony S. Fugett
Mr. Brian Gamble
Sfc (RET) James T. Gatling
John Grainer
Dr. and Mrs. David S. Granite
Ms. Beverly A. Gray
Mr. and Mrs. Sidney Green
Mr. and Mrs. Charles E. Griffin, Sr.
Mr. Constantine Grimaldis
Mr. Emerson R. Hall, Jr.
Dr. Leslie K. Hammond
Noel Hankin
Rear Admiral and Mrs. Sinclair
Harris
Carla Hayden, Ph.D.
Mr. and Mrs. Louis G. Hecht
Lenneal Henderson, Ph.D.
Mr. George Henschel
Ambassador Irvin Hicks
Mr. Walter B. Hollman, Sr.
Ms. Mary Huntley
Mr. Nat Johnson
The Honorable Adrienne A. Jones
Mr. and Mrs. David Kaintuck
Dr. Leslie King-Hammond
Mr. Franklin Lance
Mr. and Mrs. Robert Landau
Cheryl LaRoche Ph.D.
Mr. Freddy Lawson

Ms. Elizabeth A. Lewis
Rev. James I. Lightfoot Jr.
Mr. Madison and Dr. Antoinette G.
Lyles
Mr. Renard H. Marable
Mr. and Mrs. Jerry Massie
Mr. and Mrs. Carl Matthews
Ms. Kathryn McCaskill
Mr. Jesse McCurdy
Mr. and Mrs. Ervin McDaniel
Mr. Riker McKenzie
Mr. George McKinney
Curtis McMeekin
Mr. Christopher Megginson
Mr. Lee Middleton
Mr. Hans B. Miller
Ms. Yvette Mingo
Mr. Thel Moore, Jr.
Ms. Carol Morgan
Mr. and Mrs. Adolph Motley
Ms. Pearl Moulton
Reverend Joseph L. Muth Jr.
Ms. Angela Mwanza
Mr. and Mrs. Robert L. Nelson
Dr. and Mrs. Allan S. Noonan
Ms. Joe Ann Oatis
Mr. and Mrs. Jim O'Brien
Ms. Lavdena Orr
Annette Palmer, Ph.D.
Mrs. Anna L. Parker
Mr. and Mrs. Claude Parker
Ms. Antoinette Peele
Mr. Marshall Pittman
Kathleen Pontone, Esq.
Mr. Neil Porter
Mr. Craig Powell
Gloria Radeff

Ms. Wanda Ramsey
Mr. and Mrs. Junius Randolph, Jr.
Mrs. Gladys Reed
Mr. and Mrs. Charles Rees
Mrs. Beverly G. Reid
Mr. Leonard A. Richardson
Dr. Walker L. Robinson
Ms. Sylvia L. Rogers
Mr. and Mrs. Charles Rohrbaugh
Ms. Sharon G. Scott
Mr. Royston B. Scott
Mr. David Shapiro and Ms. Andrea Ruff
Ms. Audrey Smith
Ms. Sabrina Smith
Dr. H. Lovell Smith
Ms. Roslyn L. Smith
Miss Sue Spaid
Ms. Beverly B. Spellman
Mr. David Staton
Ms. Joan Stevenson
Mr. Gregory Talley
Mr. D. B. Taylor
Mr. Jay Tildon
Mr. James L. Tucker Jr.
Mr. Wilbert L. Walker
Mr. and Mrs. Alfred Whittaker
Mr. and Mrs. Frank Whorley
Mr. and Dr. Elliott A. Wiley, Sr.
Ms. Wanetah Wilkins
Ms. Gertrude Williams
Lynn & ET Williams
Ms. Rosalyn Wilson
Mr. William Woodward
The Honorable Bernard C. "Jack" Young

Supporting the Community



Each year, we are pleased and honored to contribute admission tickets to various deserving Maryland groups. These tickets are used by the recipient groups for admission, as gifts to their volunteers, or to help raise funds for their organizations. For FY2012, the museum donated over 220 tickets, valued in excess of \$2,000. Those receiving tickets included:

- | | |
|--|--|
| Baltimore Heart | Maryland State Family Child Care Association |
| Baltimore International College | Maryland Volunteer Lawyers Service |
| CareFirst BlueCross BlueShield | MD/DC Minority Supplier Development Council |
| CASA | MD/DC/VA Walk to Defeat |
| Chesapeake Arts Center | Lydia Briscoe & Family |
| Children's Playhouse of MD, Inc. | National Black MBA Association, Inc. |
| Civic Works | Rock Creed Valley Elementary School |
| Columbia Festival of the Arts | Ronald McDonald House of Baltimore |
| Digital Harbor HS Alliance | Saint Waverly Farmers Market |
| Everyman Theatre | South Baltimore Learning Center |
| Feeding the People | St. Elizabeth School |
| Hand in Hand Baltimore, Inc. | Strategic Alliances |
| Hernwood Elementary | The Community College of Baltimore County |
| Howard County Arts Council | The Glenn L. Martin MD Aviation Museum |
| Howard County Library | Tony & Lorisa Goines |
| Kennedy Krieger Institute | Towson University Alumni Association |
| Lead Sponsorship/Donation Coordinator | Under Armor |
| Little Italy | University of MD Office of Student Development
& Leadership |
| Macedonia Baptist Church of Baltimore City, Inc | Urbanite Baltimore |
| Maryland Association of Resources for Families & Youth | Young Lawyers' Bar Association of Baltimore City |
| Maryland Rehabilitation Association Conference | |



Board of Directors

Leslie King-Hammond, Ph.D., *Chair of the Board*
Maj. Gen. Leo V. Williams, III, *Vice-Chair of the Board*
Carla Hayden, Ph.D., *Treasurer of the Board*
Sandra Brock Jibrell, *Secretary of the Board*

Peter G. Angelos, Esq.
Leonard J. Attman
Andrew M. Bertamini
C. Edith Booker, Ph.D.
Rev. Dr. Harold A. Carter
Charles M. Christian, Ph.D.
Beverly A. Cooper
Tamara J. Devieux-Adams
Joshua C. Greene, Esquire
Constantine (Costas) Grimaldis

Sandra Brock Jibrell
Nathaniel E. Jones, Jr., Esq.
Cheryl LaRoche, Ph.D.
Theodore H. Mack
Victor C. March, Sr.
Annette Palmer, Ph.D.
Roslyn L. Smith
Otis Warren, Jr.
Rosalyn Fugett Wiley, Ed.D

Mayor's ex-officio representative
Mayor Stephanie Rawlings-Blake

Legal Counsel to Reginald F. Lewis Museum & the Board
Amanda Conn, Counsel, MDP



Museum Staff

EXECUTIVE DIRECTOR

Skipp Sanders, Ph.D.

EXECUTIVE ASSISTANT

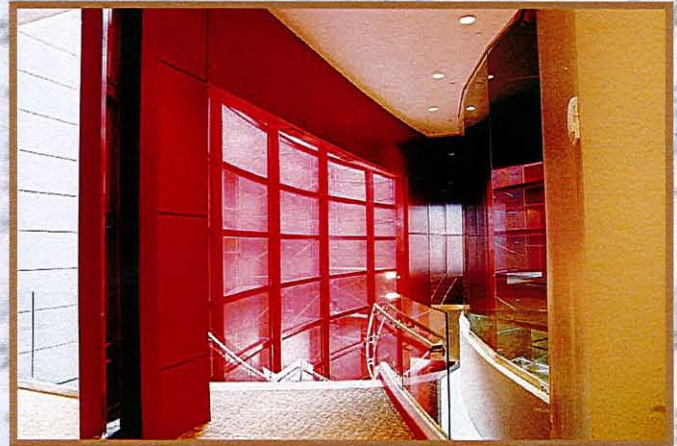
Sharon J. Harper

DIRECTOR OF COLLECTIONS & EXHIBITIONS

Michelle J. Wilkinson, Ph.D.

DIRECTOR OF FINANCE & ADMINISTRATION

Junius Randolph, Jr. CPA



Christina Batipps, *Registrarial & Curatorial Coord*

Zandra Carson, *Membership Coordinator*

Alyse Clepper, *Marketing Assistant*

Lisa Crawley, *Resource Center Manager*

Sandra Elmore, *Receptionist*

David Ferraro, *Exhibits Manager*

Joy Hall, *Visitor & Volunteer Svc Coordinator*

James Hawkins Jr., *Security / Building Manager*

Joshua Hill, *Maintenance Technician*

Erica Holmes, *Visitor & Volunteer Services Manager*

Bridget Lyday, *Senior Accountant/Museum Shop Mgr*

Deborah Nobles-McDaniel, *Registrarial Coordinator*

George Phillips, *Maintenance Technician*

Cori Ramos, *Group Sales/Special Events Manager*

Tyree Taft, *AV Technician*

Terry Taylor, *Educational Prog. Coordinator*

Lisa Woods, *Office / Marketing Manager*